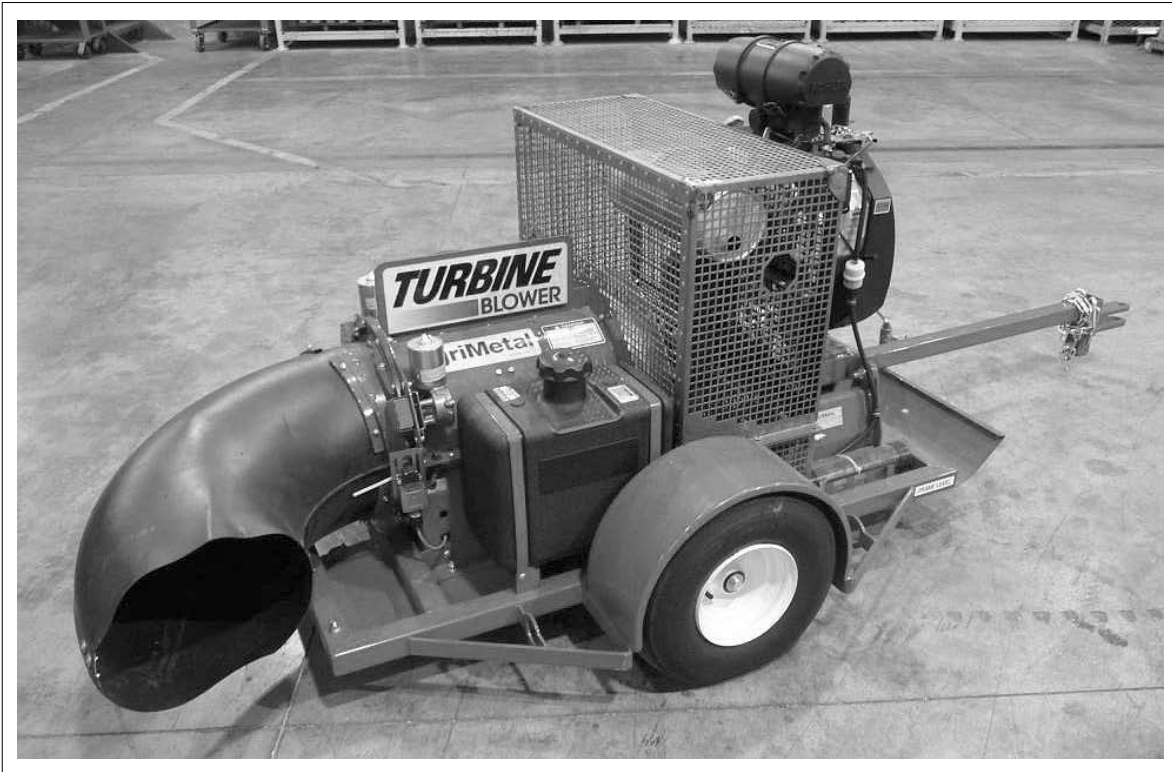


# AgriMetal

INC.



**PULL-TYPE TURBINE  
LEAF BLOWER  
MODEL TB-380 IC  
OPERATOR'S MANUAL**

# **AGRIMETAL INC.**

## **PULL-TYPE LEAF BLOWER WARRANTY**

AgriMetal Incorporated (AgriMetal) warrants the new **Pull-Type Leaf Blower** to be free from defects in material, under normal use and service. Obligation under this warranty shall extend for a period of 1 year (12 months) following the date of delivery to the original purchaser and shall be limited to, at the option of AgriMetal, replacement or repair of any parts found, upon inspection by AgriMetal, to be defective.

### **WARRANTY CLAIMS**

The purchaser claiming under this warranty shall submit a warranty claim in the prescribed form to AgriMetal or an Authorized Dealer, for inspection by an authorized company representative.

### **LIMITATIONS OF LIABILITY**

This warranty is expressly in lieu of all other warranties expressed or implied and all other obligations or liabilities on our part of any kind or character, including liabilities for alleged representations or negligence. We neither assume nor authorize any other person to assume on our behalf, any liability in connection with the subsequent sale of the **Pull-Type Leaf Blower**.

This warranty shall not apply to any **Pull-Type Leaf Blower** which has been altered outside the factory in any way so as, in the judgement of AgriMetal, to affect its operation or reliability, or which has been subject to misuse, neglect or accident.

This warranty does not cover parts and accessories which are under separate guarantees from the manufacturers and where service can be obtained from their service facilities. No warranty is extended to regular service items such as lubricants, belts, paint and the like.

### **OPERATOR'S MANUAL**

The Purchaser acknowledges having received training in the safe operation of the **Pull-Type Leaf Blower** and further acknowledges that AgriMetal does not assume any liability resulting from the operation of the **Pull-Type Leaf Blower** in any manner other than described in the Operator's Manual supplied at the time of purchase.

### **LIMITED 2 YEAR COMMAND PRO ENGINE WARRANTY**

Kohler Co. warrants to the original consumer that each new COMMAND PRO engine sold by Kohler Co. will be free from manufacturing defects in materials or workmanship in nannal service for a period of two (2) years from date of purchase, provided it is operated and maintained in accordance with Kohler Co:s instructions and manuals.

Our obligation under this warranty is expressly limited. at our option, to the replacement or repair at Kohler Co., Kohler, Wisconsin 53044, or at a service facility designated by us of such parts as inspection shall disclose to have been defective.

### **EXCLUSIONS**

Mufflers on engines used commercially (non-residential) are warranted for one (1) year from date of purchase, except catalytic mufflers, which are warranted for two (2) years.

This warranty does not apply to defects caused by casualty or unreasonable use, including faulty repairs by others and failure to provide reasonable and necessary maintenance.

The following items are not covered by this warranty:

Engine accessories such as fuel tanks, clutches, transmissions, power-drive assemblies, and batteries, unless supplied or installed by Kohler Co. These are subject to the warranties, if any, of their manufacturers.

KOHLER CO. AND/OR THE SELLER SHALL NOT BE LIABLE FOR SPECIAL, INDIRECT, INCIDENTAL, OR CONSEQUENTIAL DAMAGES OF ANY KIND, including but not limited to labor costs or transportation charges in connection with the repair or replacement of defective parts.

IMPUED OR STATUTORY WARRANTIES, INCLUDING WARRANTIES OF MERCHANTABILITY OR FITNESS FOR A PARTICULAR PURPOSE, ARE EXPRESSLY LIMITED TO THE DURATION OF THIS WRITTEN WARRANTY. We make no other express warranty, nor is anyone authorized to make any on our behalf.

Some states do not allow limitations on how long an implied warranty lasts, or the exclusion or limitation of incidental or consequential damages, so the above limitation or exclusion may not apply to you.

This warranty gives you specific legal rights, and you may also have other rights which vary from state to state.

### **TO OBTAIN WARRANTY SERVICE**

Purchaser must bring the engine to an authorized Kohler service facility. To locate the nearest facility, visit our website, [www.kohlerengines.com](http://www.kohlerengines.com), consult your local telephone directory, or telephone 1-800-544-2444.

**ENGINE DIVISION, KOHLER CO.. KOHLER, WISCONSIN 53044**

**WARRANTY VOID IF NOT REGISTERED**

# AGRIMETAL PULL-TYPE LEAF BLOWER

## WARRANTY REGISTRATION FORM & INSPECTION REPORT

### WARRANTY REGISTRATION

This form must be filled out by the dealer and signed by both the dealer and the customer at the time of delivery.

Customer's Name \_\_\_\_\_ Dealer Name \_\_\_\_\_

Address \_\_\_\_\_ Address \_\_\_\_\_

City, State/Prov., Code \_\_\_\_\_ City, State/Prov., Code \_\_\_\_\_

Phone Number ( \_\_\_\_ ) \_\_\_\_\_

Leaf Blower Model \_\_\_\_\_

Serial Number \_\_\_\_\_

Delivery Date \_\_\_\_\_

### DEALER INSPECTION REPORT

### SAFETY

- \_\_\_\_\_ Blower Turns Freely
- \_\_\_\_\_ Belt Tension Checked
- \_\_\_\_\_ Check Engine Fluid Levels
- \_\_\_\_\_ Pulleys Aligned
- \_\_\_\_\_ Fasteners Tight
- \_\_\_\_\_ Lubricate Machine
- \_\_\_\_\_ Check Tire Pressure

- \_\_\_\_\_ Safety Chain on Hitch
- \_\_\_\_\_ All Decals Installed
- \_\_\_\_\_ Guards and Shields Installed and Secured
- \_\_\_\_\_ Review Operating and Safety Instructions

I have thoroughly instructed the buyer on the above described equipment which review included the Operator's Manual content, equipment care, adjustments, safe operation and applicable warranty policy.

Date \_\_\_\_\_

Dealer's Rep. Signature \_\_\_\_\_

Signature \_\_\_\_\_

The above equipment and Operator's Manual have been received by me and I have been thoroughly instructed as to care, adjustments, safe operation and applicable warranty policy.

Date \_\_\_\_\_

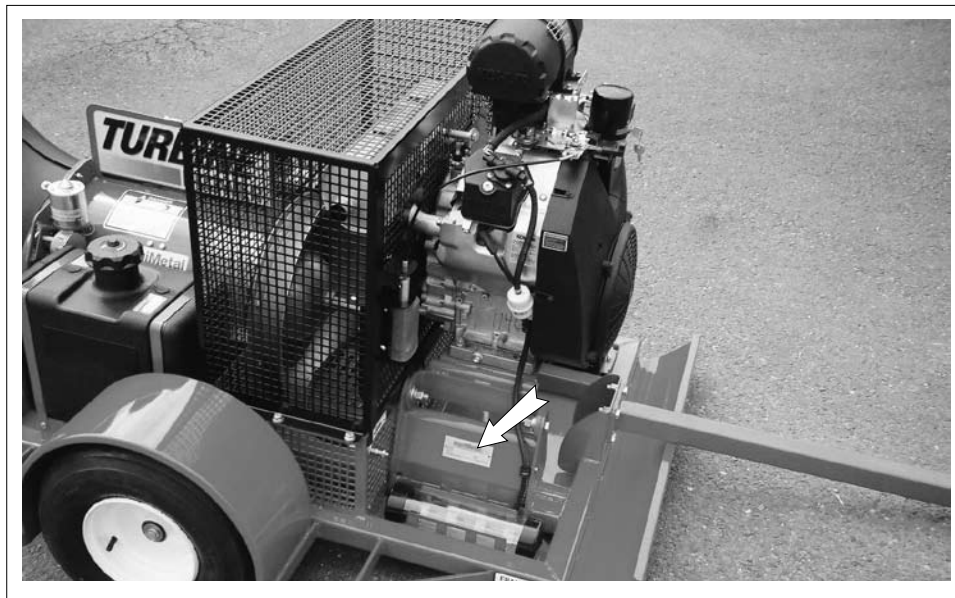
Owner's Signature \_\_\_\_\_

WHITE	YELLOW	PINK
AGRIMETAL INC.	DEALER	CUSTOMER

# SERIAL NUMBER LOCATION

Always give your dealer the serial number of your AgriMetal Pull-Type Leaf Blower when ordering parts or requesting service or other information.

The serial number plate is located where indicated. Please mark the number in the space provided for easy reference.



Model Number \_\_\_\_\_

Serial Number \_\_\_\_\_

# TABLE OF CONTENTS

SECTION	DESCRIPTION	PAGE
<b>1</b>	<b>Introduction .....</b>	<b>1</b>
<b>2</b>	<b>Safety .....</b>	<b>2</b>
2.1	General Safety.....	3
2.2	Equipment Safety Guidelines .....	4
2.3	Safety Training.....	5
2.4	Safety Signs .....	5
2.5	Preparation .....	6
2.6	Operating Safety.....	7
2.7	Transport Safety .....	8
2.8	Storage Safety.....	8
2.9	Refuelling Safety .....	8
2.10	Tire Safety .....	8
2.11	Maintenance Safety .....	9
2.12	Battery Safety .....	9
2.13	Gas Motor Safety.....	10
2.14	Sign-Off Form .....	11
<b>3</b>	<b>Safety Sign Locations .....</b>	<b>12</b>
<b>4</b>	<b>Assembling .....</b>	<b>15</b>
<b>5</b>	<b>Operation.....</b>	<b>21</b>
5.1	To the New Operator or Owner.....	21
5.2	Machine Components.....	22
5.3	Break-In .....	23
5.4	Pre-Operation Checklist .....	23
5.5	Controls .....	24
5.6	Attaching/Unhooking .....	26
5.7	Field Operation .....	28
5.8	Transporting.....	33
5.9	Storage .....	35
<b>6</b>	<b>Service and Maintenance.....</b>	<b>36</b>
6.1	Service.....	36
6.1.1	Fluids and Lubricants .....	36
6.1.2	Servicing Intervals.....	37
6.1.3	Service Record.....	40
6.2	Maintenance .....	41
6.2.1	Cleaning Air Cleaner .....	41
6.2.2	Changing Engine Oil and Filter .....	42
6.2.3	Changing In Line Fuel Filter .....	43
<b>7</b>	<b>Trouble Shooting .....</b>	<b>44</b>
<b>8</b>	<b>Specifications .....</b>	<b>45</b>
8.1	Mechanical .....	45
8.2	Bolt Torque.....	46
<b>9</b>	<b>Index .....</b>	<b>47</b>

**AGRIMETAL INC.  
1006 PRINCIPALE  
WICKHAM, QUEBEC  
CANADA, J0C 1S0**

**TEL: (819) 398-6883  
FAX: (819) 398-5311**