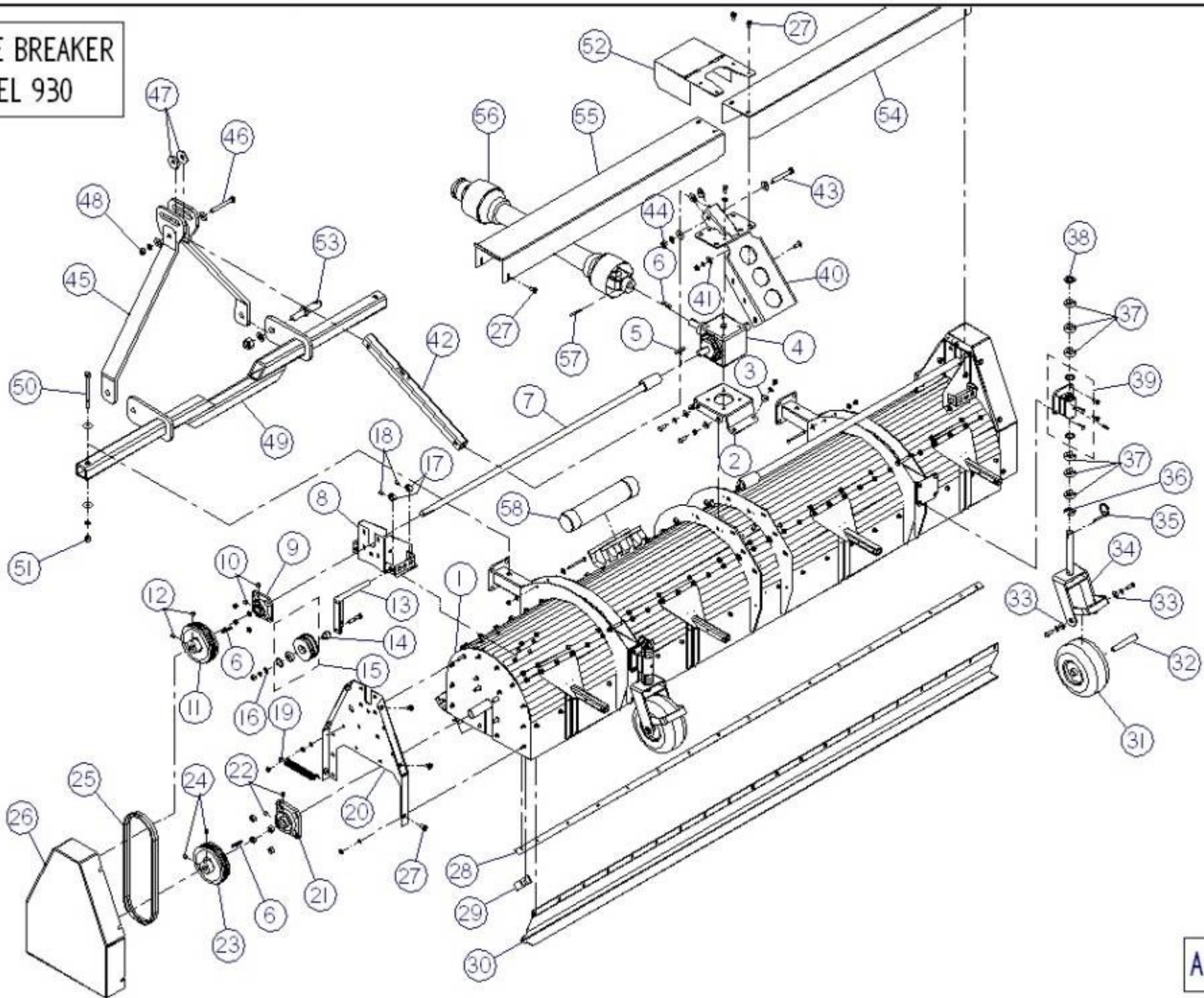


CORE BREAKER
MODEL 930



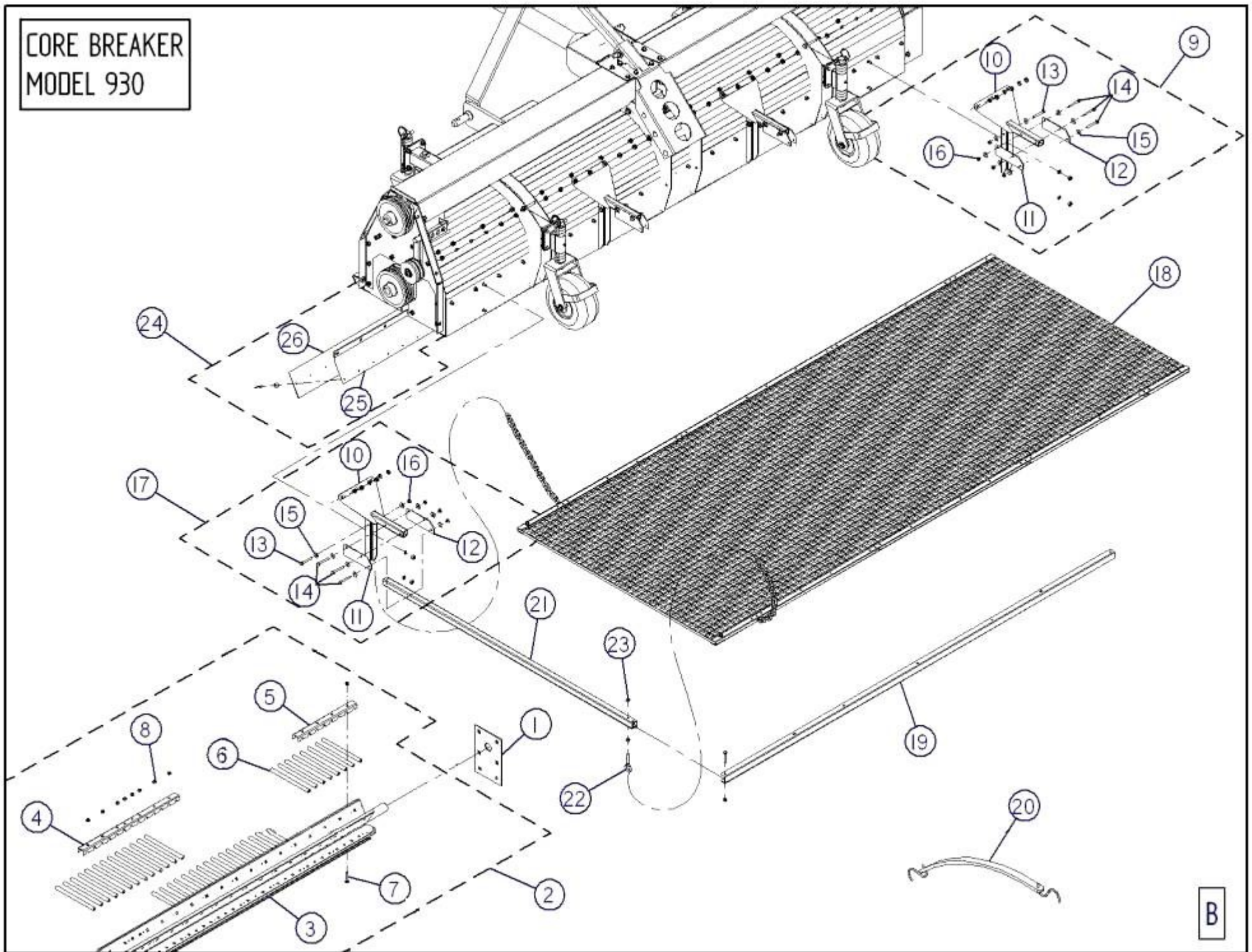
CORE BREAKER MOD: 930

REF.	PART NO.	DESCRIPTION	QTE
1	50-55-0040	FRAME " STICKER INCLUDED" (MOD: 930)	1
2	50-50-0060	TRANSMISSION BASE	1
3	01-01-2485	FLAT WASHER 13/16" Dia. X Ø 25/64" X 14GA	4
4	NC14-10-0123	90° ANGLE GEAR BOX SHAFTING 3 (MOD: 930)	1
5	50-41-0900	SQUARE KEY 1/4" X 1/4" X 1 3/4" LG	2
6	01-41-0910	SQUARE KEY 1/4" X 1/4" X 1 1/2" LG	5
7	50-50-0000	DRIVE SHAFT (MOD: 930)	2
8	50-50-0045	BEARING SUPPORT	2
9	22-55-0120	BEARING UCF 205-16 X Ø 1" (GREASE FITTING 1/4"-28)	2
10	NC02-44-0088	ALLENS SET SCREW 1/4"-20 X 1/4" LG	4
11	NC14-62-0147	PULLEY 2MA60 X Ø 1" KW 1/4" 2SS 5/16"-18	2
12	NC02-44-0103	ALLENS SET SCREW 5/16"-18 X 3/8" LG	4
13	50-50-0050	BELT TIGHTENER PIVOT	2
14	22-21-0025	IDLER PULLEY BUSHING	2
15	50-55-0005	IDLER PULLEY ASSY.	2
N/I	50-21-0000	IDLER PULLEY ONLY	2
N/I	NC14-75-0068	BEARING #99502H	2
N/I	NC01-64-0142	RETAINING RINGS INTERNAL FOR Ø 1 3/8"	2
16	01-01-2485	FLAT WASHER 13/16" Dia. X Ø 25/64" X 14GA	2
17	NC01-65-0020	COLLAR Ø 3/4" DIA.INT.1SS 5/16"-18	4
18	NC02-44-0102	ALLENS SET SCREW 5/16"-18 X 5/16" LG	4
19	NC13-85-0008	SPRING 7/8" Dia. X 5" LG	2
20	50-50-0040	BEARING SUPPORT	2
21	12-38-0001	FLANGE BEARING 4 Ø UCF 207-20 X Ø 1 1/4" (GREASE FITTING 1/4"-28)	2
22	NC02-44-0102	ALLENS SET SCREW 5/16"-18 X 5/16" LG	4
23	50-39-0150	PULLEY 2MA60 X Ø 1 1/4" KW 1/4" 2SS 5/16"-18	2
24	NC02-44-0103	ALLENS SET SCREW 5/16"-18 X 3/8" LG	4
25	NC14-25-1520	V BELT AX-42 (1/2" X 44")	4
26	50-55-0045	BELT GUARD "STICKER INCLUDED"	2
27	NC01-62-0003	HEX BOLT WASHER HEAD 3/8" -16 X 3/4" LG	20
28	50-01-0910	COUNTER KNIF STOPPER (MOD 930)	2
29	50-01-0915	COUNTER KNIF	62
30	50-01-2445	BACK DEFLECTOR (MOD:930)	1
31	NC14-70-0076	WHEEL 9" Dia. ASSY.	4
N/I	NC14-70-0070	TIRE ONLY 9 X 3.50-4	4
N/I	NC14-70-0072	RIM 4" Dia.	4
N/I	NC14-70-0043	SHOULDER BEARING C-12-22-F	8
N/I	NC14-70-0003	VALVE TBL TR-13	4
32	22-13-1005	SWIVEL WHEEL AXLE 3/4" Dia. X 4 1/2" LG	4
33	21-01-0950	FLAT WASHER 1.005" Dia. X Ø 25/64"	8
34	50-55-0011	SWIVEL CASTER "STICKER INCLUDED"	4
35	NC01-69-1100	LINCHPIN 3/8" Dia.	4
36	NC17-43-0015	CASTER GAUGE SLEEVE 1/4" THICK	4
37	NC17-43-0014	CASTER GAUGE SLEEVE 1/2" THICK	24
38	04-33-0220	FLAT WASHER 1 1/2" Dia. X Ø 1" X 5/64"	4
39	22-55-0020	SWIVEL WHEEL SUPPORT ASSY.	4
N/I	22-50-0035	SWIVEL WHEEL SUPPORT ONLY	4
N/I	NC01-69-0785	GREASE FITTING 1/4"-28 (STRAIGHT)	4
N/I	NC13-15-0049	O-RING 1 1/4" Dia. X Ø 1" X 1/8 "	4
40	50-50-0030	TRASMISSION SUPPORT	1
41	21-01-0950	FLAT WASHER 1.005" Dia. X Ø 25/64"	6
42	50-07-0800	3 POINT HITCH BRACE	1
43	NC01-29-0402	HEX.BOLT 5/8"-18 X 3 1/2" LG (GRADE 5)	1
44	NC02-07-0022	HEX. NUT 5/8"-11	1
45	50-50-0020	3 POINT HITCH UPRIGHT	2
46	NC01-29-0404	HEX.BOLT 5/8"-18 X 4" LG (GRADE 5)	1

CORE BREAKER MOD: 930

REF.	PART NO.	DESCRIPTION	QTE
47	50-13-2800	FLAT WASHER 2" Dia. X Ø 41/64" X 1/4"	2
48	NC02-07-0022	HEX. NUT 5/8"-11	1
49	50-50-0015	3 POINT HITCH SUPPORT (MOD:930)	1
50	NC01-29-0408	HEX.BOLT 5/8"-18 X 5" LG (GRADE 5)	2
51	NC02-10-0022	HEX.NUT 5/8"-18	2
52	50-55-0065	PTO SHAFT GUARD "STICKER INCLUDED"	1
53	NC01-78-0002	HITCH PIN	2
54	50-55-0050	RIGHT SIDE DRIVE GUARD (MOD:930) "STICKER INCLUDED"	1
55	50-55-0055	LEFT SIDE DRIVE GUARD (MOD: 930) "STICKER INCLUDED"	1
56	50-34-0030	PTO SHAFT (T20) 1 3/8" X 6 SPLINES X Ø 1" K.W. 1/4" X 34 1/4" LG	1
57	NC01-69-0465	SPRING PIN 1/4" X 2" LG	1
58	NC13-30-0237	CAPSULE WITH END CAP	1
59	50-03-4800	FLAT WASHER 1 1/2" DIA. X Ø .640" X 14 GA	2

CORE BREAKER
MODEL 930



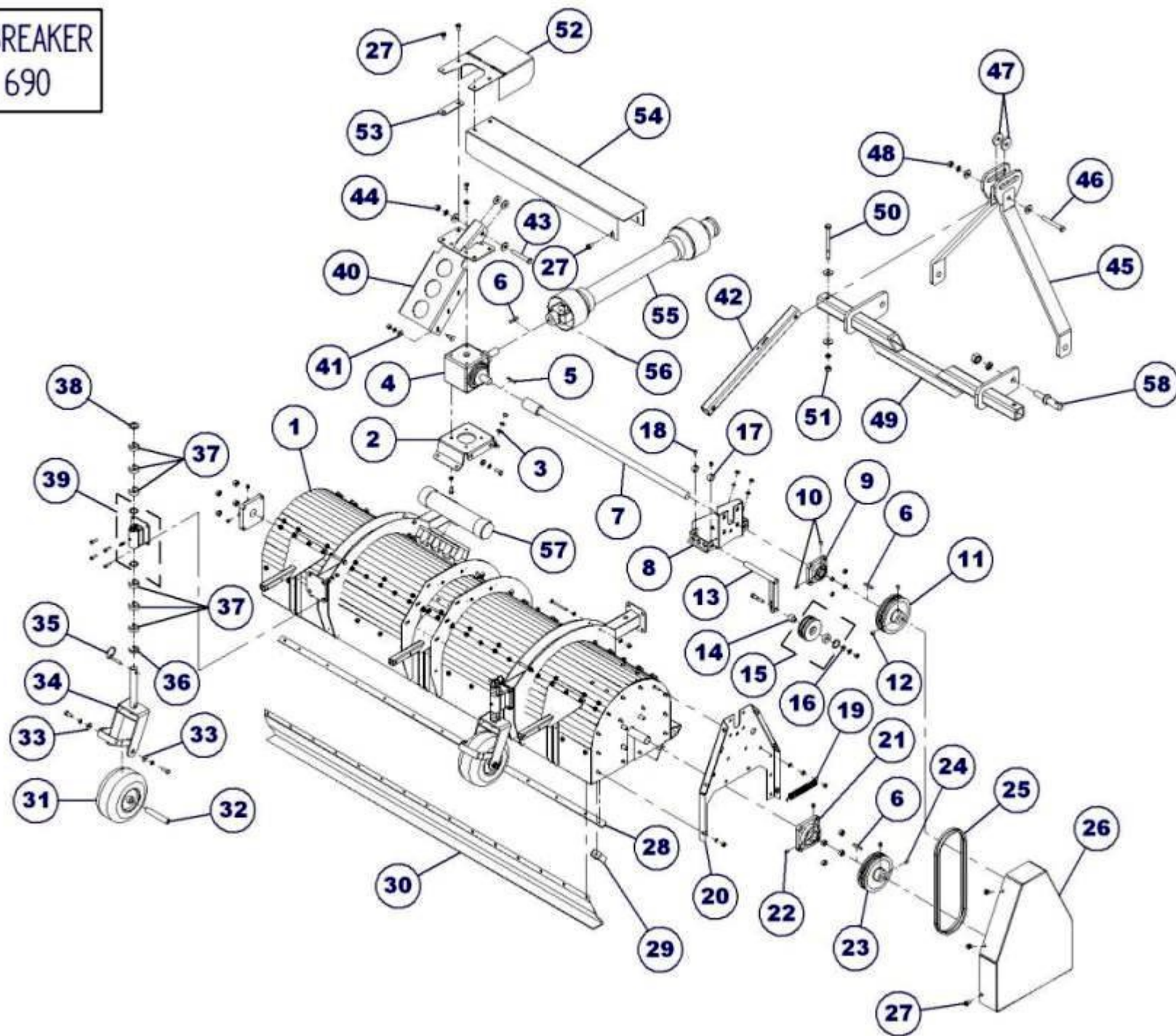
CORE BREAKER MOD: 930

REF.	PART NO.	DESCRIPTION	QTE
1	50-01-0920	BEARING PROTECTOR	2
2	50-55-0000	ROTOR ASSY. (MOD:930)	1
3	50-50-0005	ROTOR ONLY (MOD:930)	1
4	50-01-2400	RUBBER FINGER CHANNEL (19 3/8" LG)	6
5	50-01-2440	RUBBER FINGER CHANNEL (11 7/8" LG)	36
6	50-45-0400	RUBBER FINGER	366
7	NC01-04-0060	CARR.BOLT 5/16"-18 X 1 1/2" LG (GRADE 2)	192
8	NC01-96-0010	NYLON INSERT LOCKNUTS 5/16"-18	192
9	50-55-0017	DRAG MATT SUPPORT (RIGHT) ASSY.	2
10	50-50-0025	DRAG MATT SUPPORT ONLY	4
11	50-01-1510	LEFT HINGE	4
12	50-01-1510	LEFT HINGE	4
13	NC01-00-0391	BOLT 1/4"-28 X 1 7/8" LG (SPECIAL)	4
14	NC01-00-0390	BOLT 1/4"-28 X 1 3/4" LG (SPECIAL)	12
15	NC02-26-0001	FLAT WASHER Ø 17/64"	32
16	NC01-97-0004	NYLON INSERT LOCKNUTS 1/4"-28	16
17	50-55-0015	DRAG MATT SUPPORT (LEFT) ASSY.	2
18	50-55-0020	DRAG MATT ASSY. (MOD:930)	1
19	50-01-3030	DRAG MATT CHANNEL (MOD:930)	1
20	NC13-15-0032	POLYURETHANE STRAP 24"	1
21	50-07-0405	DRAG MATT TUB	4
22	NC01-52-0004	EYE BOLT 1/4"-20 X 2 1/2" LG	4
23	NC01-96-0009	NYLON INSERT LOCKNUTS 1/4"-20	4
24	50-55-0030	RUBBER SUPPORT ASSY. (MOD:930)	1
25	50-01-2475	RUBBER SUPPORT ONLY (MOD:930)	1
26	50-55-0070	RUBBER PAD HARDWARE INCLUDED (MOD:930)	1

STICKER CORE BREAKER MOD: 930

REF.	PART NO.	DESCRIPTION	QTE
N/I	50-58-0000	STICKER "KIT" (CORE BREAKER MOD:930)	1
N/I	01-60-0070	STICKER WARNING MISSING SHIELD HAZARD...	2
N/I	01-60-0115	STICKER WARNING ROTATING PART HAZARD...	2
N/I	01-60-0110	STICKER WARNING ROTATING PART HAZARD...	2
N/I	01-60-0125	STICKER WARNING KEEP ALL GUARDS AND SHIELDS IN PLACE...	1
N/I	06-60-0000	STICKER AGRIMÉTAL INC "MEDIUM"	4
N/I	03-60-0005	STICKER GREASE GUN	8
N/I	01-60-0040	STICKER MAXIMUM 540 RPM	2
N/I	NC13-33-0126	STICKER CAUTION / 1. READ OPERATOR'S MANUAL BEFORE...	1
N/I	NC13-33-0113	STICKER WARNING MISSING SHIELD HAZARD...	2
N/I	NC13-33-0098	STICKER WARNING ROTATING BLADE HAZARD...	4
N/I	NC13-33-0122	STICKER IMPORTANT LIFT FROM TOP ONLY...	4
N/I	NC13-33-0179	STICKER IMPORTANT GREASE DRIVE LINE TELESCOPIC SHAFT	1

CORE BREAKER
MODEL 690



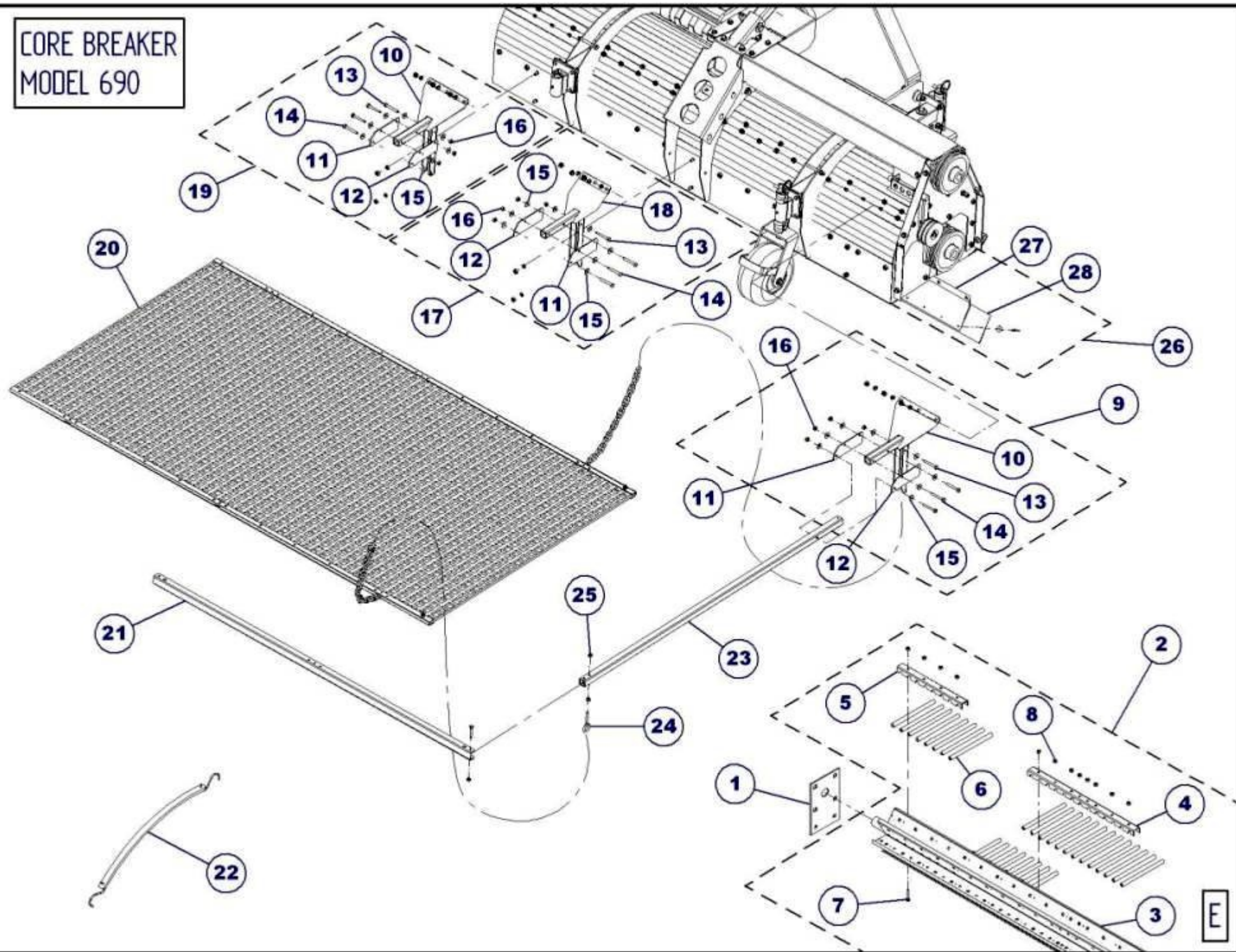
CORE BREAKER MOD: 690

REF.	PART NO.	DESCRIPTION	QTE
1	50-55-1040	FRAME " STICKER INCLUDED" (MOD: 690)	1
2	50-50-0060	TRANSMISSION BASE	1
3	01-01-2485	FLAT WASHER 13/16" Dia. X Ø 25/64" X 14GA	4
4	NC14-10-0122	90° ANGLE GEAR BOX SHAFTING 2 (MOD: 690)	1
5	50-41-0900	SQUARE KEY 1/4" X 1/4" X 1 3/4" LG	1
6	01-41-0910	SQUARE KEY 1/4" X 1/4" X 1 1/2" LG	3
7	50-50-1000	DRIVE SHAFT (MOD: 690)	1
8	50-50-0045	BEARING SUPPORT	1
9	22-55-0120	BEARING UCF 205-16 X Ø 1" (GREASE FITTING 1/4"-28)	1
10	NC02-44-0088	ALLENS SET SCREW 1/4"-20 X 1/4" LG	2
11	NC14-62-0147	PULLEY 2MA60 X Ø 1" KW 1/4" 2SS 5/16"-18	1
12	NC02-44-0103	ALLENS SET SCREW 5/16"-18 X 3/8" LG	2
13	50-50-0050	BELT TIGHTENER PIVOT	1
14	22-21-0025	IDLER PULLEY BUSHING	1
15	50-55-0005	IDLER PULLEY ASSY.	1
N/I	50-21-0000	IDLER PULLEY ONLY	1
N/I	NC14-75-0068	BEARING #99502H	1
N/I	NC01-64-0142	RETAINING RINGS INTERNAL FOR Ø 1 3/8"	1
16	01-01-2485	FLAT WASHER 13/16" Dia. X Ø 25/64" X 14GA	1
17	NC01-65-0020	COLLAR Ø 3/4" DIA.INT.1SS 5/16"-18	2
18	NC02-44-0102	ALLENS SET SCREW 5/16"-18 X 5/16" LG	2
19	NC13-85-0008	SPRING 7/8" Dia. X 5" LG	1
20	50-50-0040	BEARING SUPPORT	1
21	12-38-0001	FLANGE BEARING 4 Ø UCF 207-20 X Ø 1 1/4" (GREASE FITTING 1/4"-28)	2
22	NC02-44-0102	ALLENS SET SCREW 5/16"-18 X 5/16" LG	4
23	50-39-0150	PULLEY 2MA60 X Ø 1 1/4" KW 1/4" 2SS 5/16"-18	1
24	NC02-44-0103	ALLENS SET SCREW 5/16"-18 X 3/8" LG	2
25	NC14-25-1520	V BELT AX-42 (1/2" X 44")	2
26	50-55-0045	BELT GUARD "STICKER INCLUDED"	1
27	NC01-62-0003	HEX BOLT WASHER HEAD 3/8" -16 X 3/4" LG	12
28	50-01-0935	COUNTER KNIF STOPPER (MOD 690)	2
29	50-01-0915	COUNTER KNIF	46
30	50-01-2485	BACK DEFLECTOR (MOD:690)	1
31	NC14-70-0076	WHEEL 9" Dia. ASSY.	4
N/I	NC14-70-0070	TIRE ONLY 9 X 3.50-4	4
N/I	NC14-70-0072	RIM 4" Dia.	4
N/I	NC14-70-0043	SHOULDER BEARING C-12-22-F	8
N/I	NC14-70-0003	VALVE TBL TR-13	4
32	22-13-1005	SWIVEL WHEEL AXLE 3/4" Dia. X 4 1/2" LG	4
33	21-01-0950	FLAT WASHER 1.005" Dia. X Ø 25/64"	8
34	50-55-0011	SWIVEL CASTER "STICKER INCLUDED"	4
35	NC01-69-1100	LINCHPIN 3/8" Dia.	4
36	NC17-43-0015	CASTER GAUGE SLEEVE 1/4" THICK	4
37	NC17-43-0014	CASTER GAUGE SLEEVE 1/2" THICK	24
38	04-33-0220	FLAT WASHER 1 1/2" Dia. X Ø 1" X 5/64"	4
39	22-55-0020	SWIVEL WHEEL SUPPORT ASSY.	4
N/I	22-50-0035	SWIVEL WHEEL SUPPORT ONLY	4
N/I	NC01-69-0785	GREASE FITTING 1/4"-28 (STRAIGHT)	4
N/I	NC13-15-0049	O-RING 1 1/4" Dia. X Ø 1" X 1/8 "	8
40	50-50-0030	TRASMISSION SUPPORT	1
41	21-01-0950	FLAT WASHER 1.005" Dia. X Ø 25/64"	6
42	50-07-0800	3 POINT HITCH BRACE	1
43	NC01-29-0402	HEX.BOLT 5/8"-18 X 3 1/2" LG (GRADE 5)	1
44	NC02-07-0022	HEX. NUT 5/8"-11	1
45	50-50-0020	3 POINT HITCH UPRIGHT	2
46	NC01-29-0404	HEX.BOLT 5/8"-18 X 4" LG (GRADE 5)	1

CORE BREAKER MOD: 690

REF.	PART NO.	DESCRIPTION	QTE
47	50-13-2800	FLAT WASHER 2" Dia. X Ø 41/64" X 1/4"	2
48	NC02-07-0022	HEX. NUT 5/8"-11	1
49	50-50-1015	3 POINT HITCH SUPPORT (MOD:690)	1
50	NC01-29-0408	HEX.BOLT 5/8"-18 X 5" LG (GRADE 5)	2
51	NC02-10-0022	HEX.NUT 5/8"-18	2
52	50-55-0065	PTO SHAFT GUARD "STICKER INCLUDED"	1
53	50-03-4200	P.T.O. GUARD SHIM GALVANIZED (MOD:690)	1
54	50-55-1050	RIGHT SIDE DRIVE GUARD (MOD: 690) "STICKER INCLUDED"	1
55	50-34-0030	PTO SHAFT (T20) 1 3/8" X 6 SPLINES X Ø 1" K.W. 1/4" X 34 1/4" LG	1
56	NC01-69-0465	SPRING PIN 1/4" X 2" LG	1
57	NC13-30-0237	CAPSULE WITH END CAP	1
58	NC01-78-0002	HITCH PIN	2
59	50-03-4800	FLAT WASHER 1 1/2" DIA. X Ø .640" X 14 GA	2

CORE BREAKER
MODEL 690



CORE BREAKER MOD: 690

REF.	PART NO.	DESCRIPTION	QTE
1	50-01-0920	BEARING PROTECTOR	2
2	50-55-1000	ROTOR ASSY. (MOD:690)	1
3	50-50-1005	ROTOR ONLY (MOD:690)	1
4	50-01-2400	RUBBER FINGER CHANNEL (19 3/8" LG)	6
5	50-01-2440	RUBBER FINGER CHANNEL (11 7/8" LG)	24
6	50-45-0400	RUBBER FINGER	270
7	NC01-04-0060	CARR.BOLT 5/16"-18 X 1 1/2" LG (GRADE 2)	144
8	NC01-96-0010	NYLON INSERT LOCKNUTS 5/16"-18	144
9	50-55-0017	DRAG MATT SUPPORT (RIGHT) ASSY.	1
10	50-50-0025	DRAG MATT SUPPORT ONLY	2
11	50-01-1510	LEFT HINGE	3
12	50-01-1510	LEFT HINGE	3
13	NC01-00-0391	BOLT 1/4"-28 X 1 7/8" LG (SPECIAL)	3
14	NC01-00-0390	BOLT 1/4"-28 X 1 3/4" LG (SPECIAL)	9
15	NC02-26-0001	FLAT WASHER Ø 17/64"	24
16	NC01-97-0004	NYLON INSERT LOCKNUTS 1/4"-28	12
17	50-55-1025	DRAG MATT CENTRAL SUPPORT ASSY.	1
18	50-50-1025	DRAG MATT CENTRAL SUPPORT ONLY	1
19	50-55-0015	DRAG MATT SUPPORT (LEFT) ASSY.	1
20	50-55-1020	DRAG MATT ASSY.	1
21	50-01-3035	DRAG MATT CHANNEL (MOD:690)	1
22	NC13-15-0032	POLYURETHANE STRAP 24"	1
23	50-07-0405	DRAG MATT TUB	3
24	NC01-52-0004	EYE BOLT 1/4"-20 X 2 1/2" LG	3
25	NC01-96-0009	NYLON INSERT LOCKNUTS 1/4"-20	3
26	50-55-1030	RUBBER SUPPORT ASSY. (MOD:690)	1
27	50-01-2480	RUBBER SUPPORT ONLY (MOD:690)	1
28	50-55-1055	RUBBER PAD HARDWARE INCLUDED (MOD:690)	1

STICKER CORE BREAKER MOD: 690

REF.	PART NO.	DESCRIPTION	QTE
N/I	50-58-1000	STICKER "KIT" (CORE BREAKER MOD:690)	1
N/I	01-60-0070	STICKER WARNING MISSING SHIELD HAZARD...	1
N/I	01-60-0115	STICKER WARNING ROTATING PART HAZARD...	1
N/I	01-60-0110	STICKER WARNING ROTATING PART HAZARD...	1
N/I	01-60-0125	STICKER WARNING KEEP ALL GUARDS AND SHIELDS IN PLACE...	1
N/I	06-60-0000	STICKER AGRIMÉTAL INC "MEDIUM"	2
N/I	03-60-0005	STICKER GREASE GUN	8
N/I	01-60-0040	STICKER MAXIMUM 540 RPM	2
N/I	NC13-33-0126	STICKER CAUTION / 1. READ OPERATOR'S MANUAL BEFORE...	1
N/I	NC13-33-0113	STICKER WARNING MISSING SHIELD HAZARD...	1
N/I	NC13-33-0098	STICKER WARNING ROTATING BLADE HAZARD...	4
N/I	NC13-33-0122	STICKER IMPORTANT LIFT FROM TOP ONLY...	4
N/I	NC13-33-0179	STICKER IMPORTANT GREASE DRIVE LINE TELESCOPIC SHAFT	1