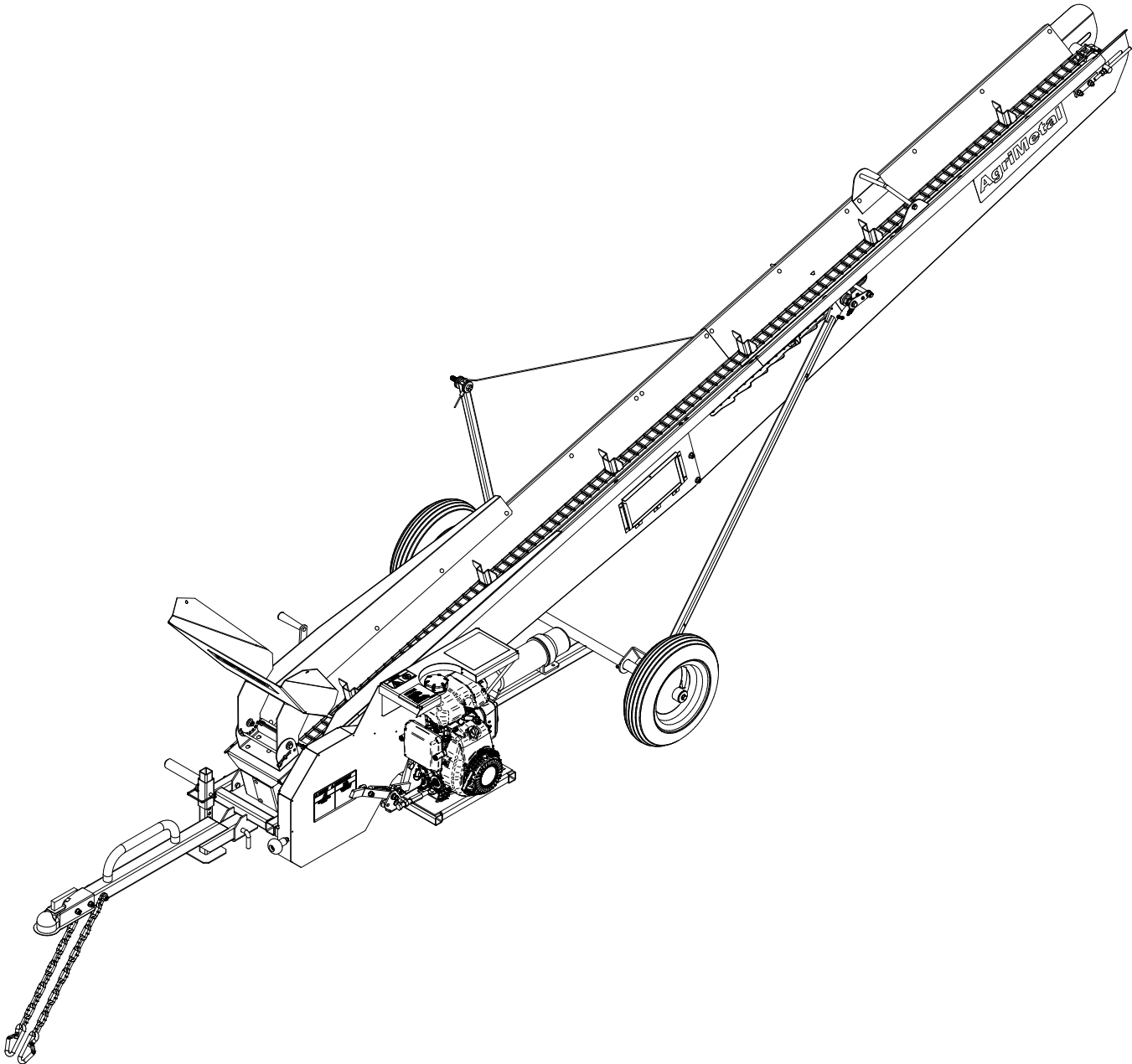


# AgriMetal

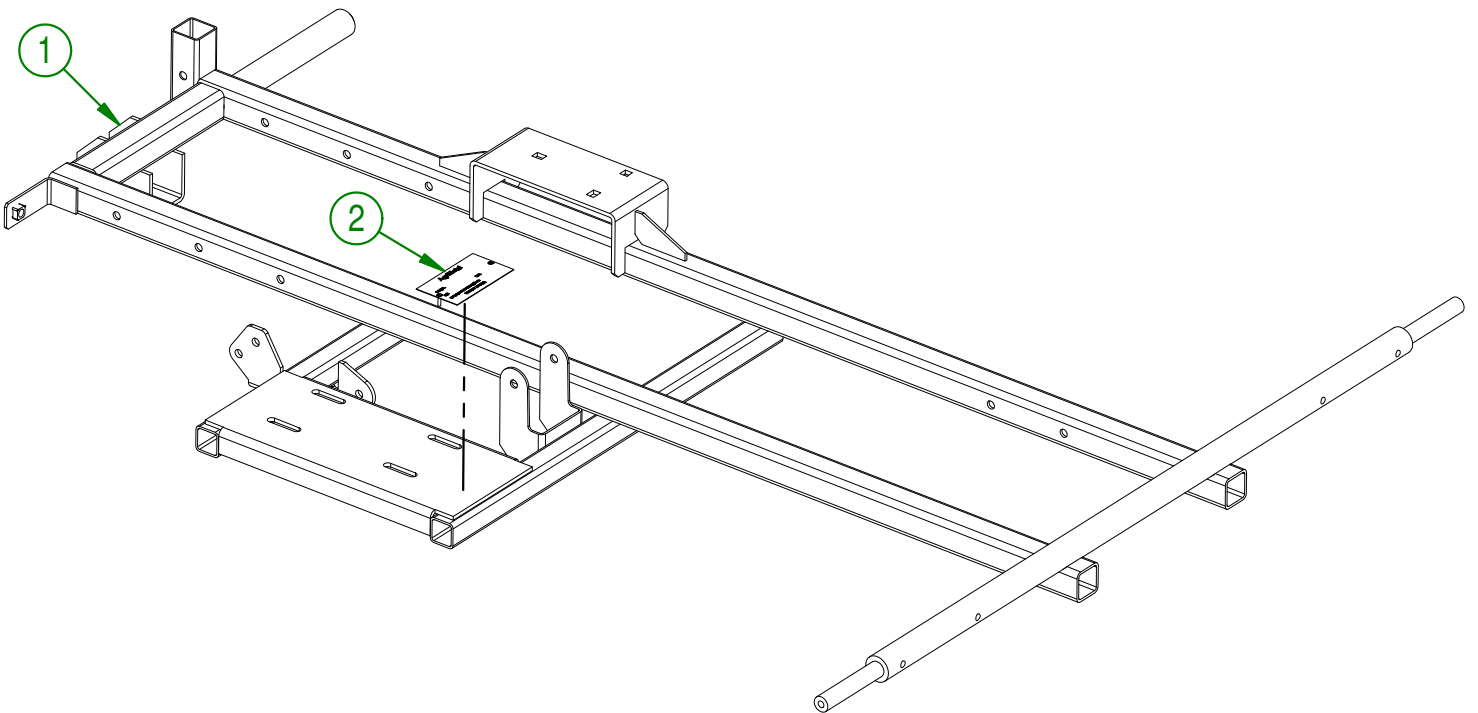
## PARTS LIST



## CONVEYOR C-312

56-57-0000

#	PART #	Qty	TITLE
1	56-50-0000	1	CONVEYOR FRAME
2	25-55-0710	1	SERIAL NUMBER PLATE



**AGRIMETAL**  
**FRAME GROUP**

CREATION : 26/08/19  
REVISION : 26/08/19

ASSEMBLY : **56-57-0000**

AUTHOR : F.HÉLIE

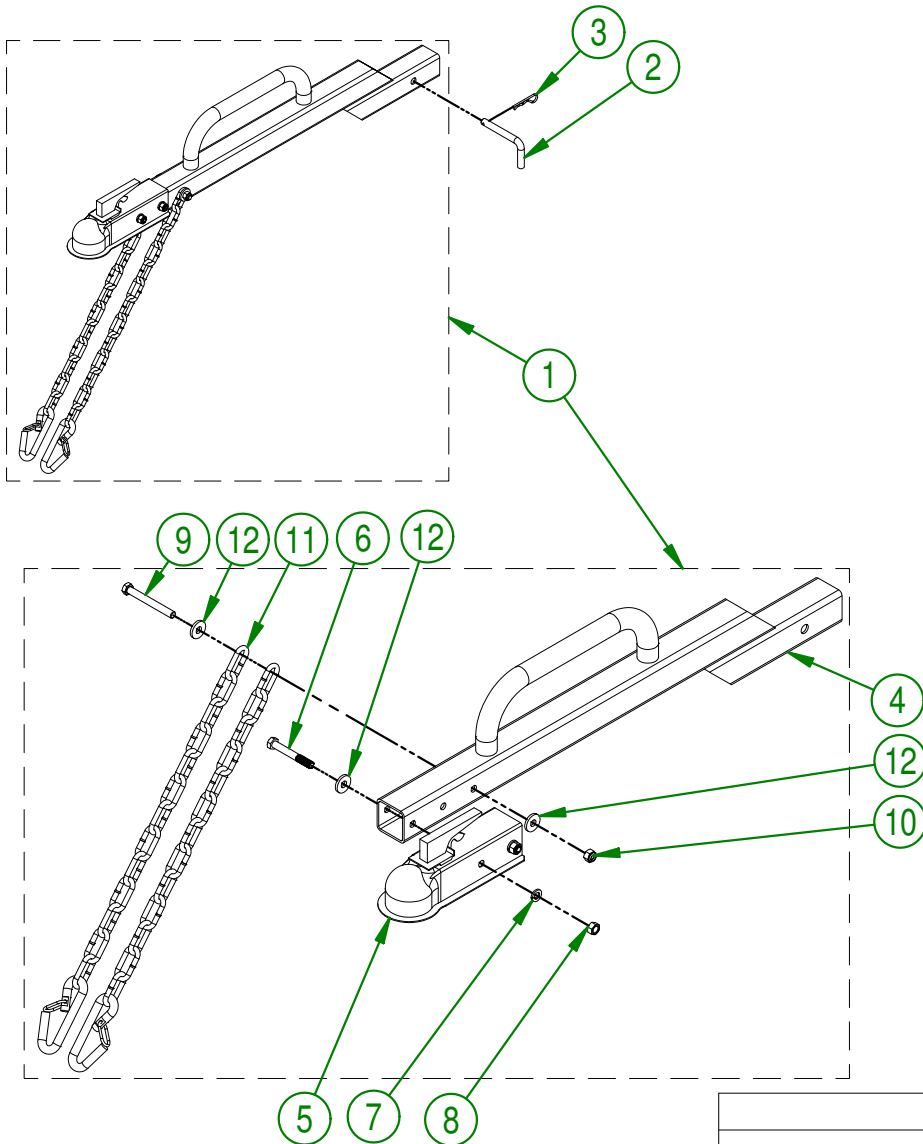
Page 1 de 25

56-57-0075

#	PART #	Qty	TITLE
1	56-55-0030	1	TONGUE ASSEMBLY
2	56-13-0600	1	TONGUE LOCK
3	NC01-63-0015	1	COTTER PIN Z 1/8" X 2 5/8"

56-55-0030

#	PART #	Qty	TITLE
4	56-50-0020	1	CONVEYOR TONGUE
5	NC13-80-0212	1	COUPLER 1 7/8 X TB 2"
6	NC01-17-0121	2	HEX. BOLT GR2 ZINC 3/8-16 X 2 1/2"
7	NC02-32-0012	2	LOCK WASHER ZINC 3/8"
8	NC02-07-0018	2	HEX. NUT ZINC 3/8-16
9	NC01-17-0123	1	HEX. BOLT GR2 ZINC 3/8-16
10	NC01-96-0011	1	NYLON NUT 3/8-16
11	55-41-0000	1	SAFETY CHAIN
12	21-01-0950	4	FLAT WASHER 10GA 1.005" DIA X 25/64"



**AGRIMETAL**  
TONGUE GROUP

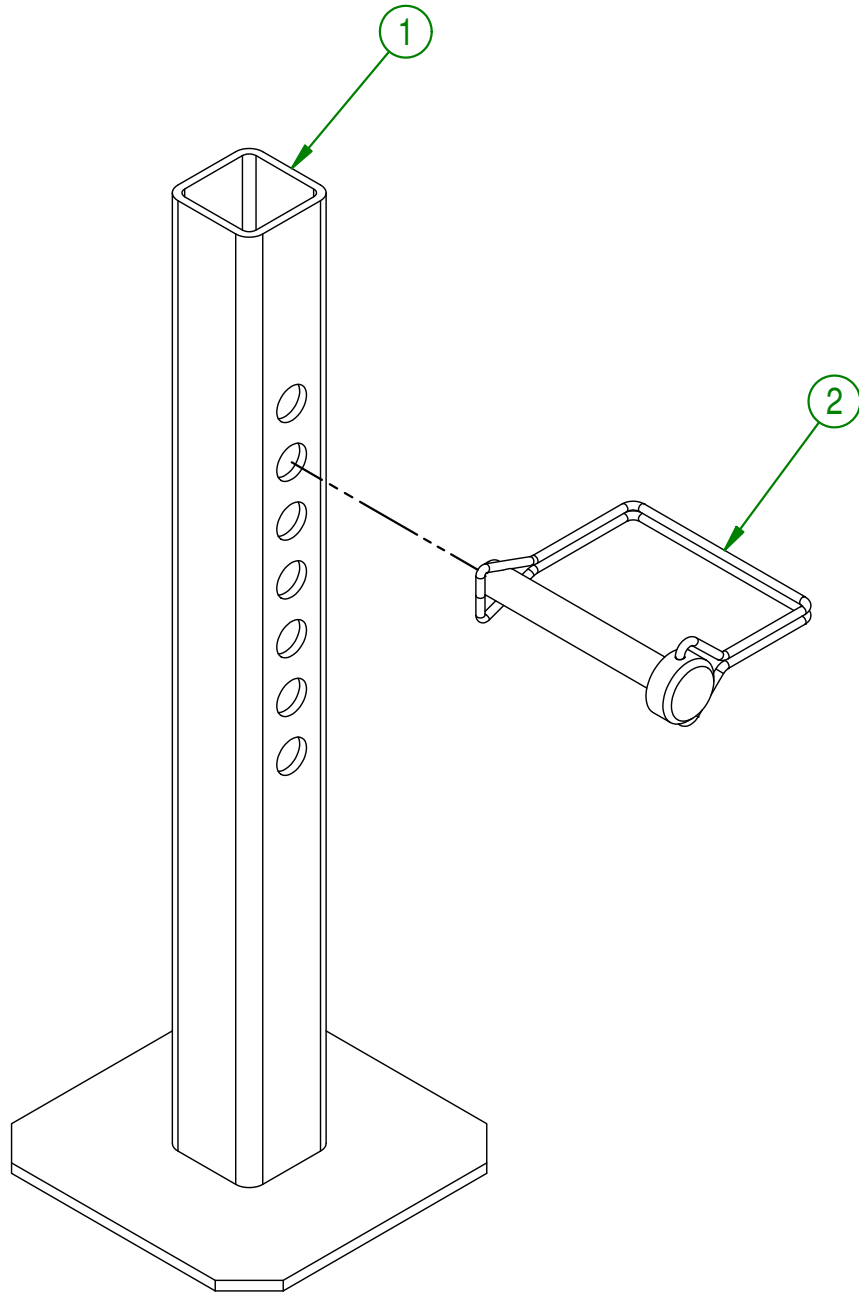
CREATION : 23/08/19  
REVISION : 23/08/19

ASSEMBLY : **56-57-0075**

AUTHOR : F.HÉLIE

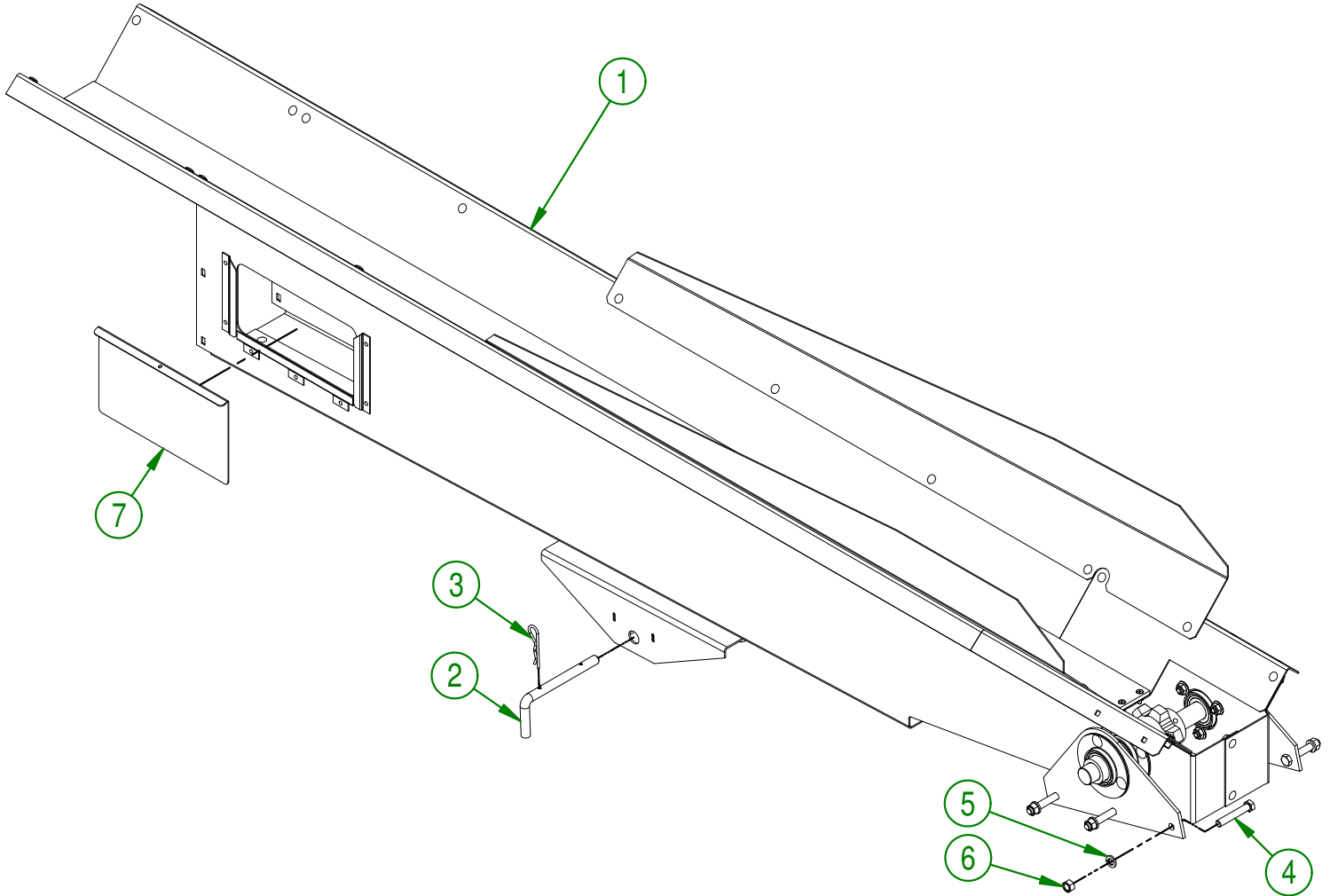
Page 2 de 25

#	PART #	Qty	TITLE
1	56-50-0030	1	STAND
2	NC01-69-1306	1	LOCKING PIN 3/8" X 2 1/2" LG



<b>AGRIMETAL</b>	
<b>STAND GROUP</b>	
CREATION : 26/08/19	ASSEMBLY : <b>56-57-0080</b>
REVISION : 26/08/19	AUTHOR : F.HÉLIE
	Page 3 de 25

#	PART #	Qty	TITLE
1	56-55-0020	1	SLAB (LOWER)
2	56-13-0605	1	CONVEYOR LOCK
3	NC01-63-0015	1	COTTER PIN Z 1/8" X 2 5/8"
4	NC01-17-0119	6	HEX. BOLT GR2 ZINC 3/8-16 X 2 1/4"
5	NC02-32-0012	6	LOCK WASHER ZINC 3/8"
6	NC02-07-0018	6	HEX. NUT ZINC 3/8-16
7	56-42-0000	2	SLAB PORTHOLE



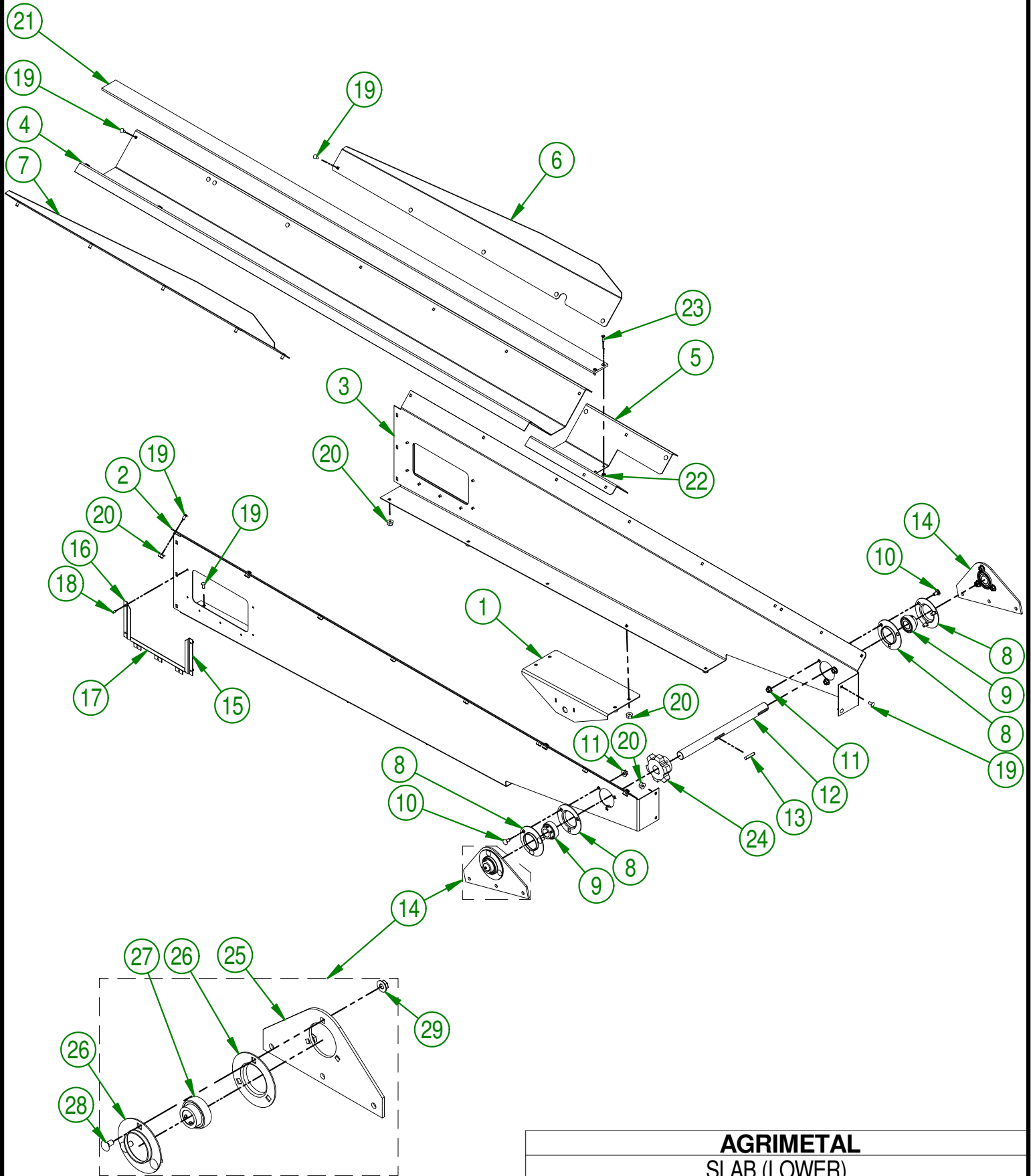
**AGRIMETAL**  
**SLAB GROUP (LOWER)**

CREATION : 23/08/19  
 REVISION : 26/08/19

ASSEMBLY : **56-57-0015**

AUTHOR : F.HÉLIE

Page 4 de 25



**AGRIMETAL**  
**SLAB (LOWER)**

CREATION : 23/08/19  
 REVISION : 23/08/19

ASSEMBLY : **56-55-0020**

AUTHOR : F.HÉLIE

Page 5 de 25

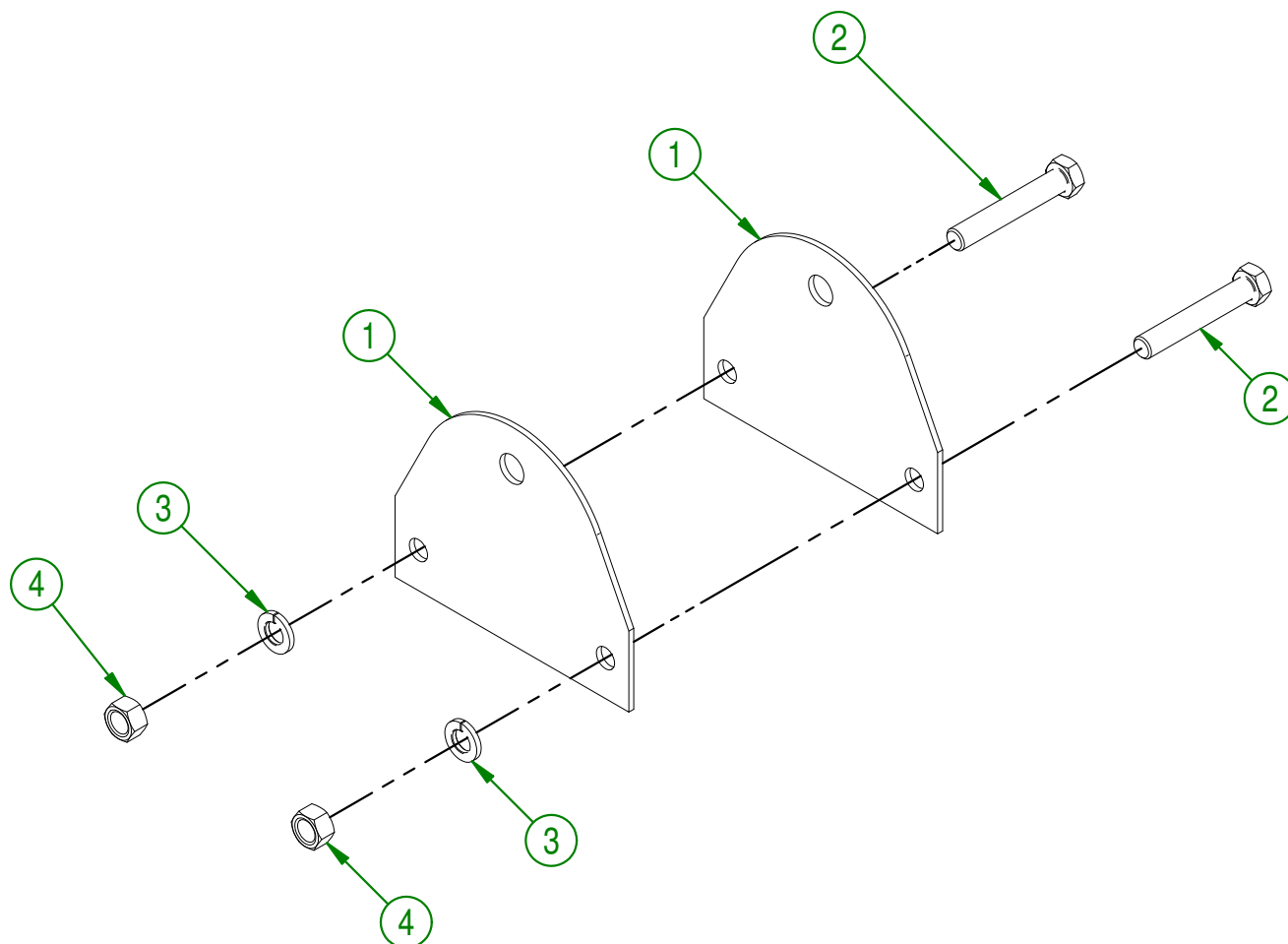
## 56-55-0020

#	PART #	Qty	TITLE
1	56-50-0015	1	CONVEYOR LOCK
2	56-03-4875	1	BELOW SLAB (LOWER)
3	56-03-4880	1	BELOW SLAB (LOWER)
4	56-03-4850	1	SLAB (CENTER)
5	56-03-4860	1	SLAB (LOWER)
6	56-03-4905	1	SLAB EXTENSION (RIGHT)
7	56-03-4907	1	SLAB EXTENSION (LEFT)
8	NC14-75-0009	4	PRESSED STEEL FLANGED HOUSING F5 O.D. 3 3/4"
9	NC14-75-0016	2	SEAL BALL BEARING SB 205-16
10	NC01-04-0055	6	CARR. BOLT GR2 ZINC 5/16-18 X 5/8"
11	NC02-14-0006	6	HEX. NUT SPECIAL FLANGET NC 5/16-18 B GRADE
12	56-13-1410	1	DRIVE SHAFT
13	NC01-65-0087	1	KEY 1/4 X 1/4 X 1 1/2"
14	56-55-0010	2	SLAB PIVOT SUPPORT
15	56-03-4200	2	PORTHOLE FRAME (RIGHT)
16	56-03-4203	2	PORTHOLE FRAME (LEFT)
17	56-03-4205	2	PORTHOLE FRAME (BELOW)
18	NC01-78-0016	14	ALUMINIUM BLIND POP RIVET STEEL MANDREL 0.187 X 0.690
19	NC01-04-0001	31	CARR. BOLT GR2 ZINC 1/4-20 X 1/2"
20	NC02-14-0017	31	FLANGED NUT GR. B 1/4-20
21	56-42-0125	1	WEAR PLATE
22	NC01-96-0006	2	NYLON NUT ZINC 10-24
23	NC02-36-0110	2	MACHINE SCREW FLAT HEAD 10-24 X 3/4" LG.
24	NC14-56-0002	1	CAST IRON PINION 62 B HOLE 1" KW 1/4 2 SS

## 56-55-0010

#	PART #	Qty	TITLE
25	56-04-0045	1	SLAB PIVOT SUPPORT
26	NC14-75-0009	2	PRESSED STEEL FLANGED HOUSING F5 O.D. 3 3/4"
27	NC14-75-0016	1	SEAL BALL BEARING SB 205-16
28	NC01-04-0055	3	CARR. BOLT GR2 ZINC 5/16-18 X 5/8"
29	NC02-14-0006	3	HEX. NUT SPECIAL FLANGET NC 5/16-18 B GRADE

#	PART #	Qty	TITLE
1	56-01-7540	2	CONVEYOR LOCK
2	NC01-17-0119	2	HEX. BOLT GR2 ZINC 3/8-16 X 2 1/4"
3	NC02-32-0012	2	LOCK WASHER ZINC 3/8"
4	NC02-07-0018	2	HEX. NUT ZINC 3/8-16

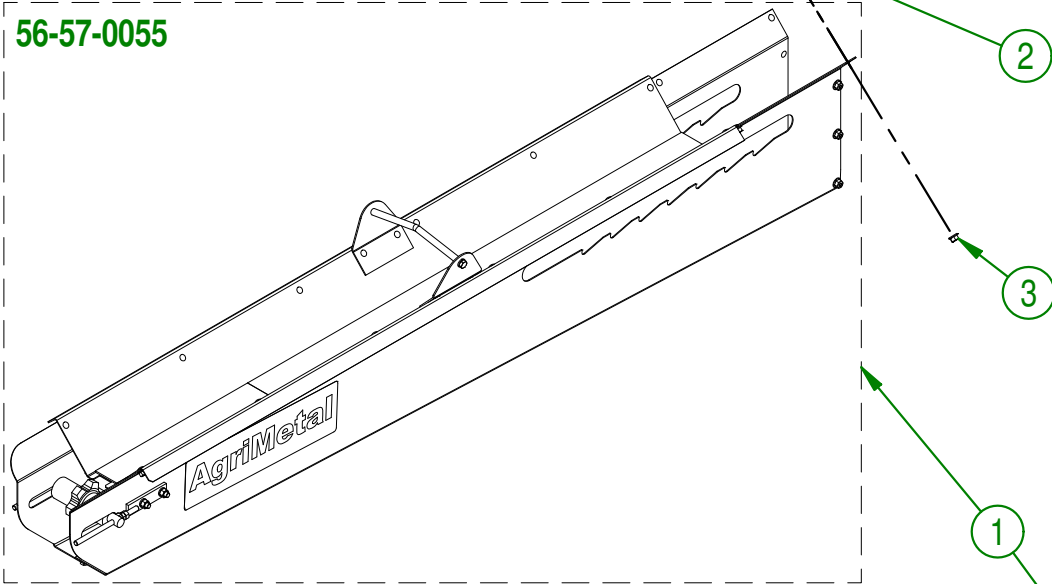
**AGRIMETAL****CONVEYOR LOCK GROUP**CREATION : 23/08/19  
REVISION : 23/08/19ASSEMBLY : **56-57-0005**

AUTHOR : F.HÉLIE

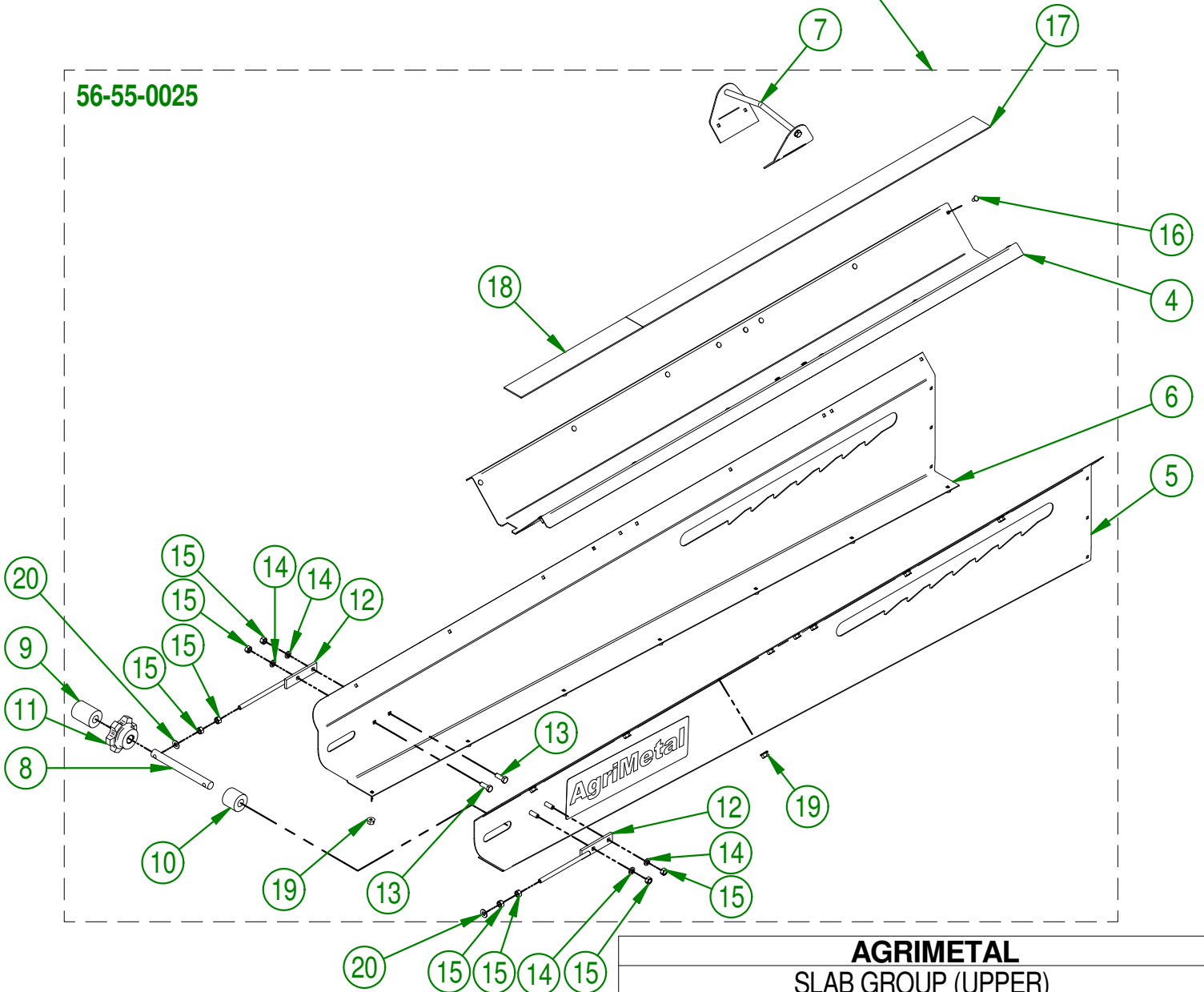
Page 7 de 25



56-57-0055



56-55-0025



**AGRIMETAL**  
**SLAB GROUP (UPPER)**

CREATION : 23/08/19  
 REVISION : 23/08/19

ASSEMBLY : **56-57-0055**

AUTHOR : F.HÉLIE

Page 8 de 25

56-57-0055

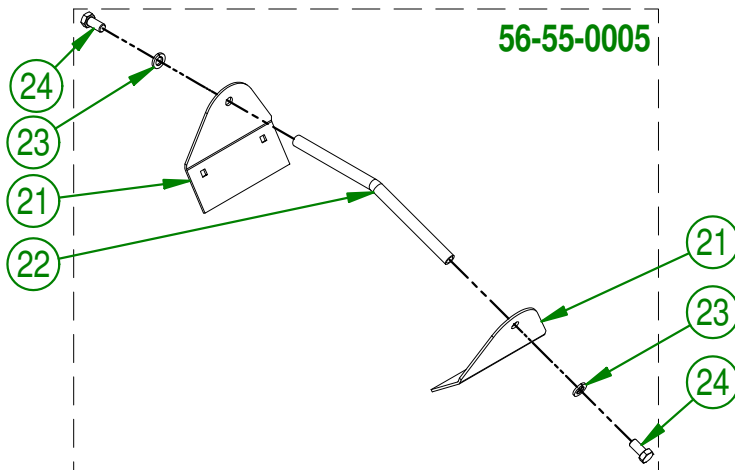
#	PART #	Qty	TITLE
1	56-55-0025	1	SLAB (UPPER)
2	NC01-04-0001	10	CARR. BOLT GR2 ZINC 1/4-20 X1/2"
3	NC02-14-0017	10	FLANGED NUT GR. B 1/4-20

56-55-0025

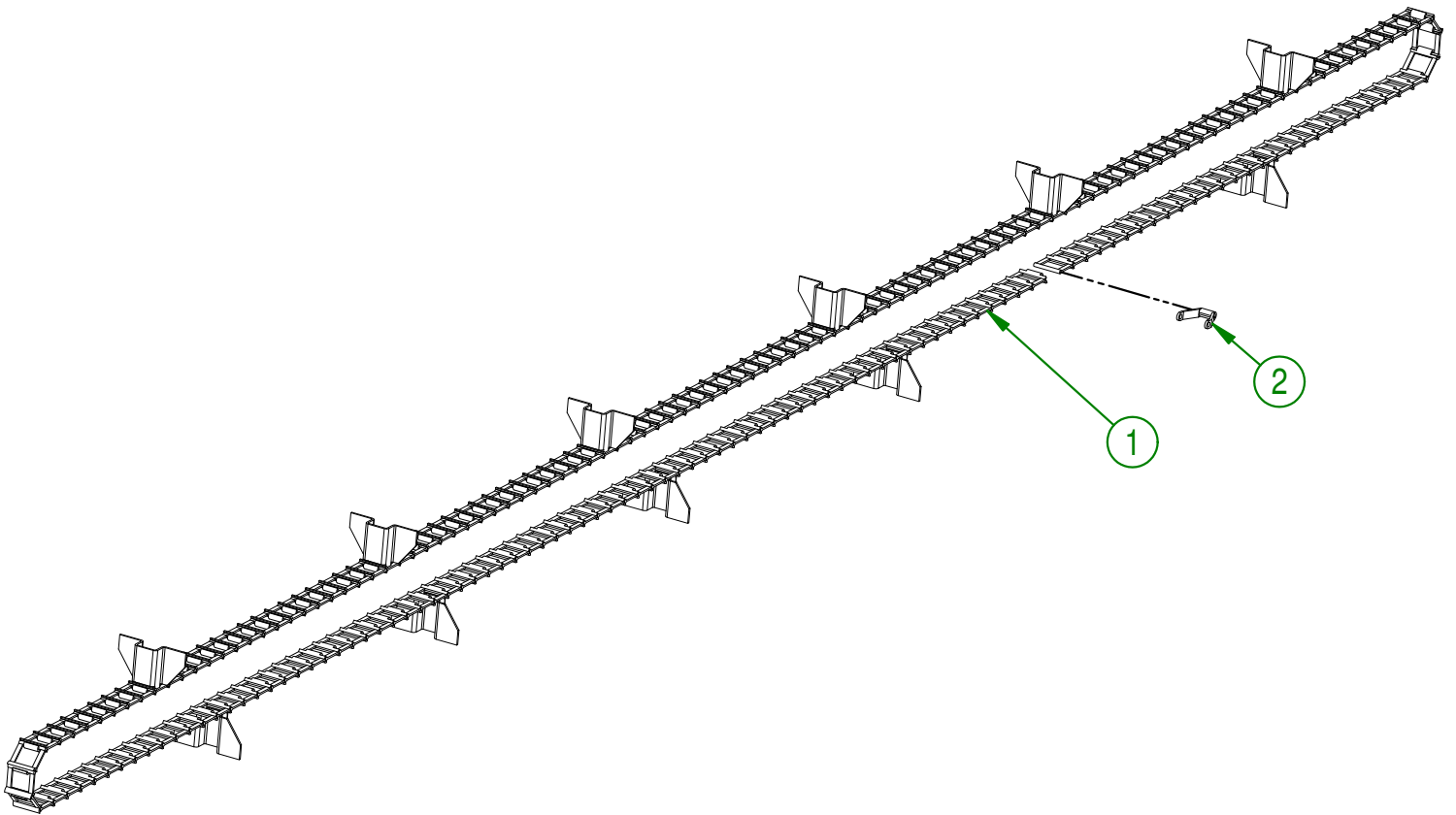
#	PART #	Qty	TITLE
4	56-03-4852	1	SLAB (UPPER)
5	56-03-4865	1	SLAB BELOW (UPPER)
6	56-03-4870	1	SLAB BELOW (UPPER)
7	56-55-0005	1	LIFTING RING
8	56-20-0255	1	ROLLER SHAFT
9	56-42-0130	1	SPROCKET BUSHING
10	56-42-0135	1	SPROCKET BUSHING
11	56-55-0035	1	SPROCKET 62B6
12	56-50-0025	2	CHAIN TENSIONER
13	NC01-17-0114	4	HEX. BOLT GR2 ZINC 3/8-16 X 1"
14	NC02-32-0012	4	LOCK WASHER ZINC 3/8"
15	NC02-07-0018	8	HEX. NUT ZINC 3/8-16
16	NC01-04-0001	23	CARR. BOLT GR2 ZINC 1/4-20 X1/2"
17	56-42-0120	1	WEAR PLATE
18	56-42-0123	1	WEAR PLATE
19	NC02-14-0017	23	FLANGED NUT GR. B 1/4-20
20	01-01-2485	2	FLAT WASHER 14 GA X 13/16"OD X 25/64" ID

56-55-0005

#	PART #	Qty	TITLE
21	56-01-7510	2	LIFTING RING SUPPORT
22	56-13-0610	1	LIFTING RING
23	NC02-32-0012	2	LOCK WASHER ZINC 3/8"
24	NC01-17-0112	2	HEX. BOLT GR2 ZINC 3/8-16 X 3/4"



#	PART #	Qty	TITLE
1	56-50-0050	1	CHAIN
2	NC14-20-0003	1	COUPLING CHAIN (CHAIN 62)



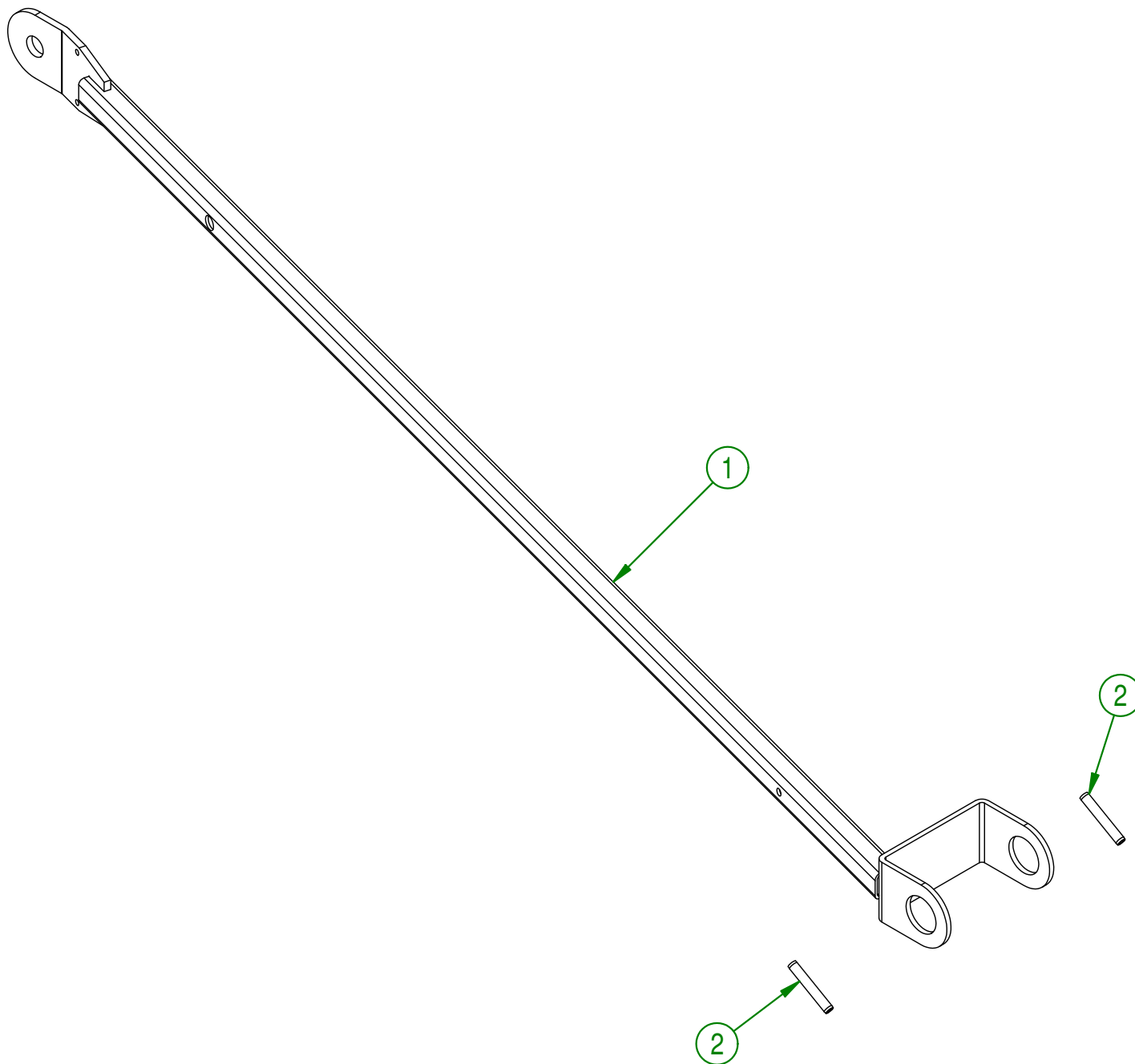
**AGRIMETAL**  
**CHAIN GROUP**

CREATION : 26/08/19  
REVISION : 26/08/19

ASSEMBLY : **56-57-0065**

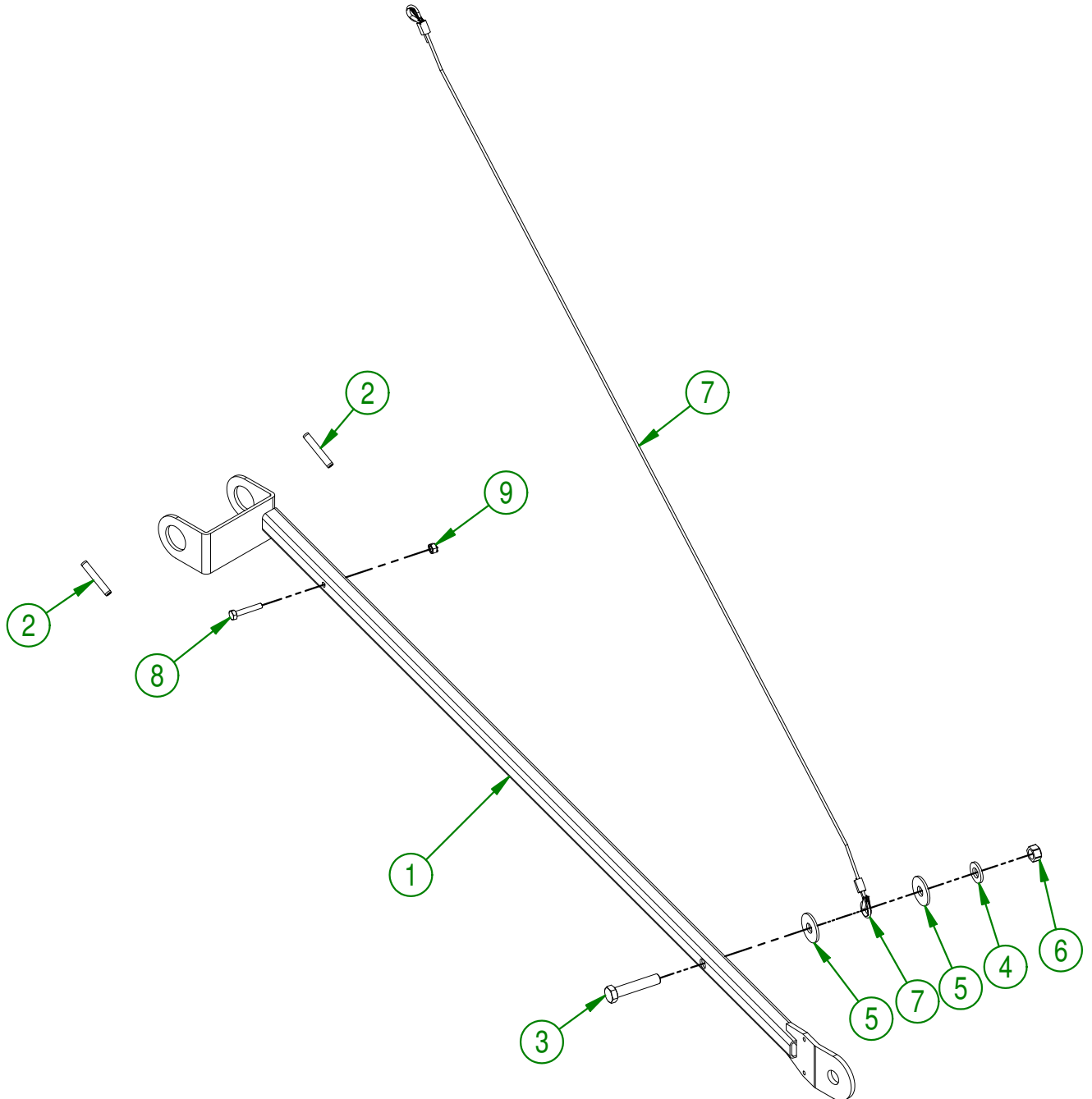
AUTHOR : F.HÉLIE Page 10 de 25

#	PART #	Qty	TITLE
1	56-50-0005	1	CONVEYOR ARM (LEFT)
2	NC01-69-0488	2	SPRING PIN 5/16" X 2" LG



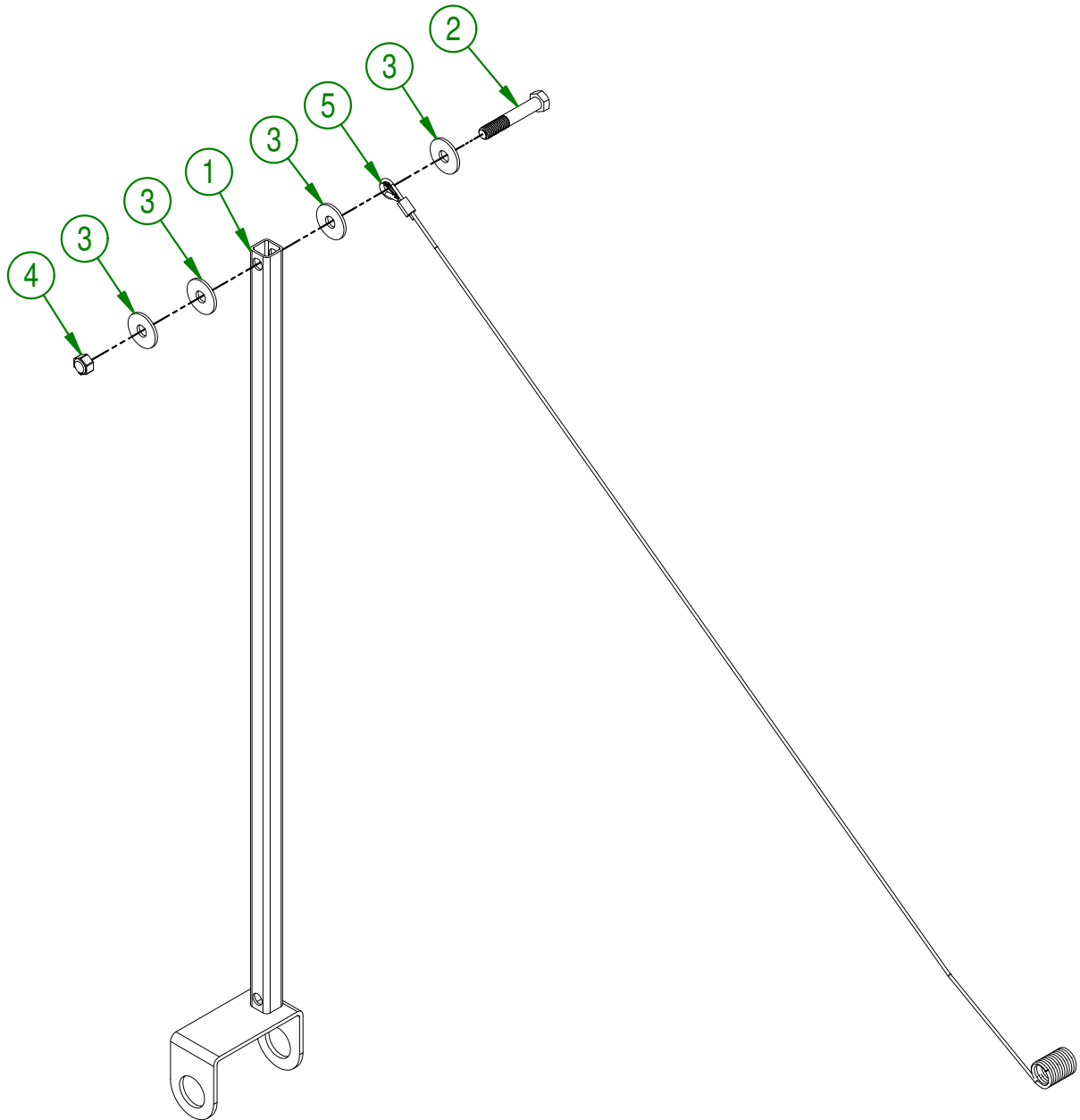
<b>AGRIMETAL</b>	
CONVEYOR ARM GROUP (LEFT)	
CREATION : 22/08/19	ASSEMBLY : <b>56-57-0025</b>
REVISION : 22/08/19	AUTHOR : F.HÉLIE   Page 11 de 25

#	PART #	Qty	TITLE
1	56-50-0010	1	CONVEYOR ARM (RIGHT)
2	NC01-69-0488	2	SPRING PIN 5/16" X 2" LG
3	NC01-25-0253	1	HEX. BOLT GR5 NC ZINC 1/2-13 X 2 1/2"
4	NC02-25-0011	1	WASHER SAE ZINC 17/32 ID
5	01-01-1660	2	WASHER SPACER
6	NC01-96-0014	1	NYLON-INSERT LOCKNUT ZINC 1/2-13
7	56-55-0055	1	CONVEYOR CABLE (48")
8	NC01-17-0008	1	HEX. BOLT GR2 ZINC 1/4-20 X 1 1/2"
9	NC01-96-0009	1	NYLON-INSERT LOCKNUT ZINC 1/4-20



<b>AGRIMETAL</b>	
<b>CONVEYOR ARM GROUP (RIGHT)</b>	
CREATION : 22/08/19	ASSEMBLY : <b>56-57-0020</b>
REVISION : 22/08/19	AUTHOR : F.HÉLIE   Page 12 de 25

#	PART #	Qty	TITLE
1	56-50-0012	1	INTERMEDIATE ARM
2	NC01-25-0255	1	HEX BOLT GR5 ZINC 1/2-13 X 3" LG.
3	01-01-1660	4	WASHER SPACER
4	NC01-96-0014	1	NYLON-INSERT LOCKNUT ZINC 1/2-13
5	56-55-0060	1	CONVEYOR CABLE (120")

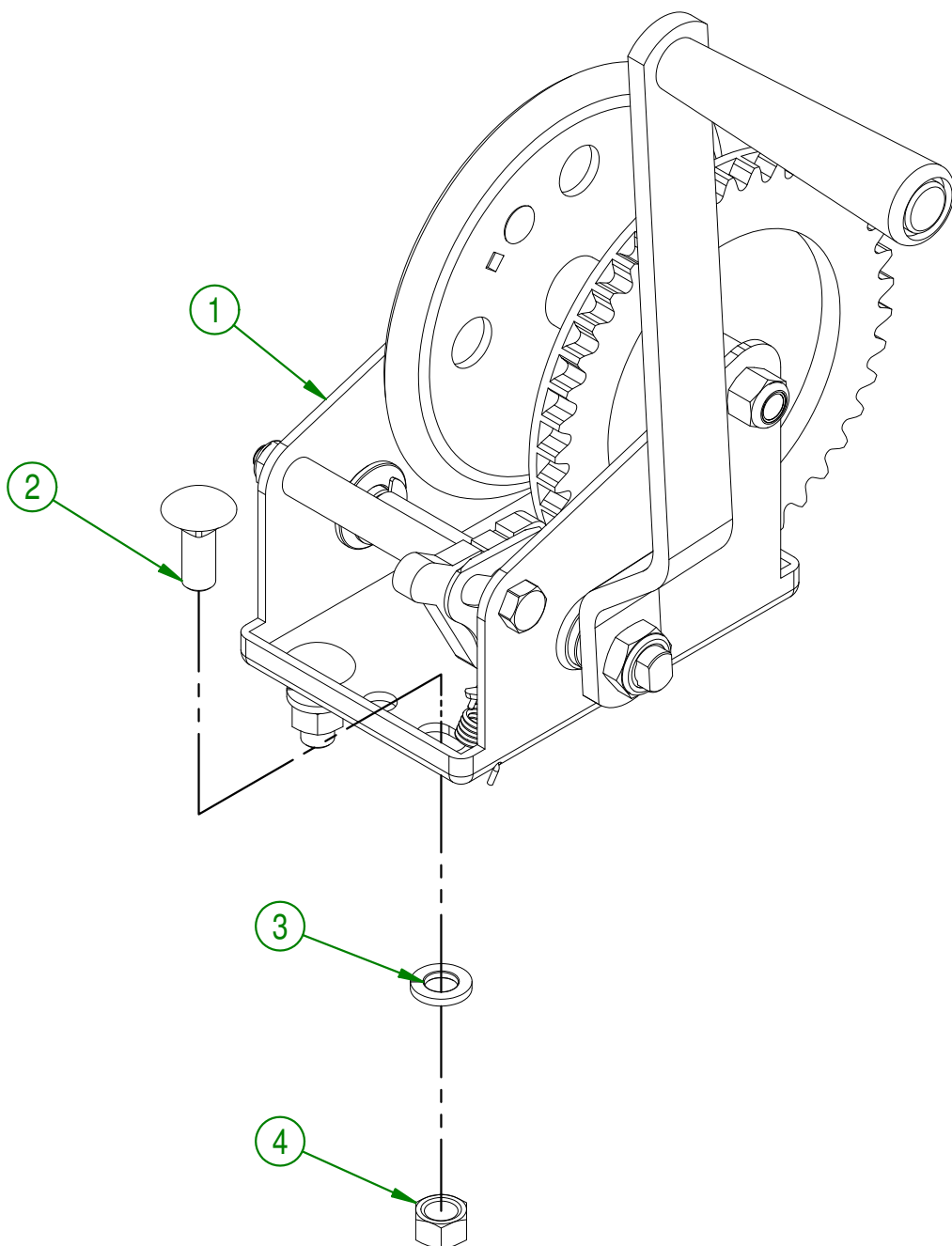
**AGRIMETAL****INTERMEDIATE ARM GROUP**

CREATION : 26/08/19  
 REVISION : 26/08/19

ASSEMBLY : **56-57-0024**

AUTHOR : F.HÉLIE Page 13 de 25

#	PART #	Qty	TITLE
1	56-55-0070	1	WINCH
2	NC01-07-0109	3	CARR. BOLT GR2 ZINC 3/8-16 X 1"
3	NC02-32-0012	3	LOCK WASHER ZINC 3/8"
4	NC02-07-0018	3	HEX. NUT ZINC 3/8-16



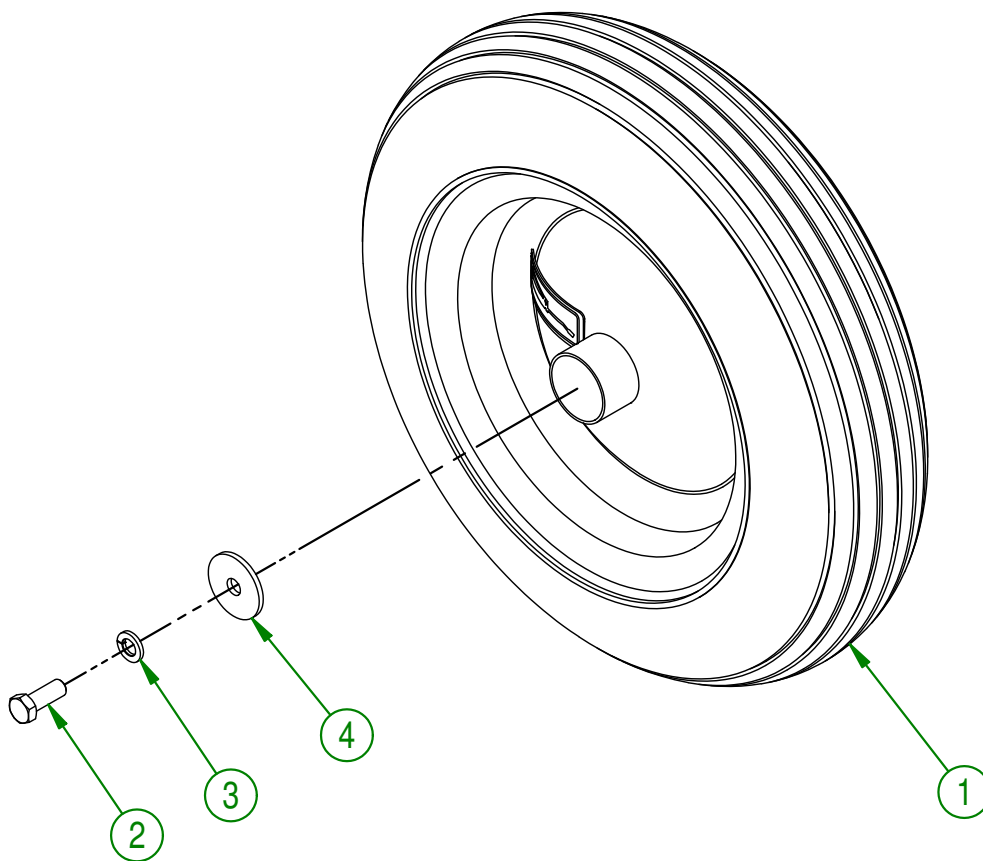
**AGRIMETAL**  
**WINCH GROUP**

CREATION : 23/08/19  
 REVISION : 23/08/19

ASSEMBLY : **56-57-0010**

AUTHOR : F.HÉLIE | Page 14 de 25

#	PART #	Qty	TITLE
1	NC14-70-0516	1	CONVEYOR WHEEL (16")
2	NC01-17-0114	1	HEX. BOLT GR2 ZINC 3/8-16 X 1"
3	NC02-32-0012	1	LOCK WASHER ZINC 3/8"
4	01-33-0010	1	WASHER

**AGRIMETAL**

WHEEL (Ø 16") GROUP

CREATION : 23/08/19  
 REVISION : 23/08/19

ASSEMBLY : **56-57-0030**

AUTHOR : F.HÉLIE Page 15 de 25

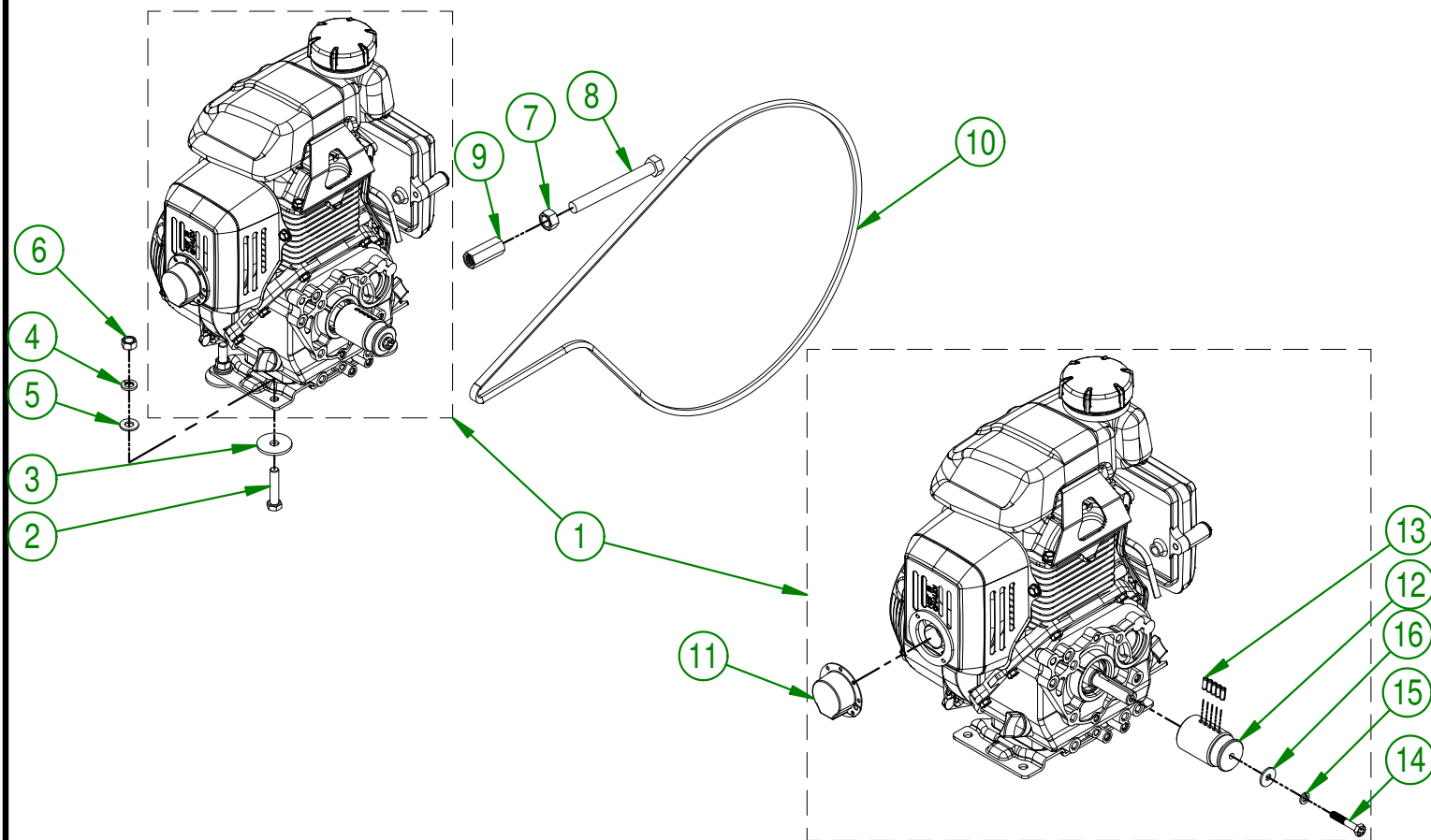


56-57-0040

#	PART #	Qty	TITLE
1	56-55-0046	1	HONDA MANUAL MOTOR (3 HP)
2	NC01-17-0117	4	HEX. BOLT GR2 ZINC 3/8-16 X 1 3/4"
3	01-33-0010	4	WASHER
4	NC02-32-0012	4	LOCK WASHER ZINC 3/8"
5	01-01-2485	4	FLAT WASHER 14 GA X 13/16"OD X 25/64" ID
6	NC02-07-0018	4	HEX. NUT ZINC 3/8-16
7	NC02-07-0020	1	HEX. NUT ZINC 1/2-13
8	NC01-15-0261	1	HEX BOLT GR2 NC. 1/2-13 X 4 1/2" LG.
9	NC01-90-0007	1	HEX. NUT NC Z 1/2-13 X 1 3/4"
10	NC14-25-0054	1	BELT 3/8 (3L610)

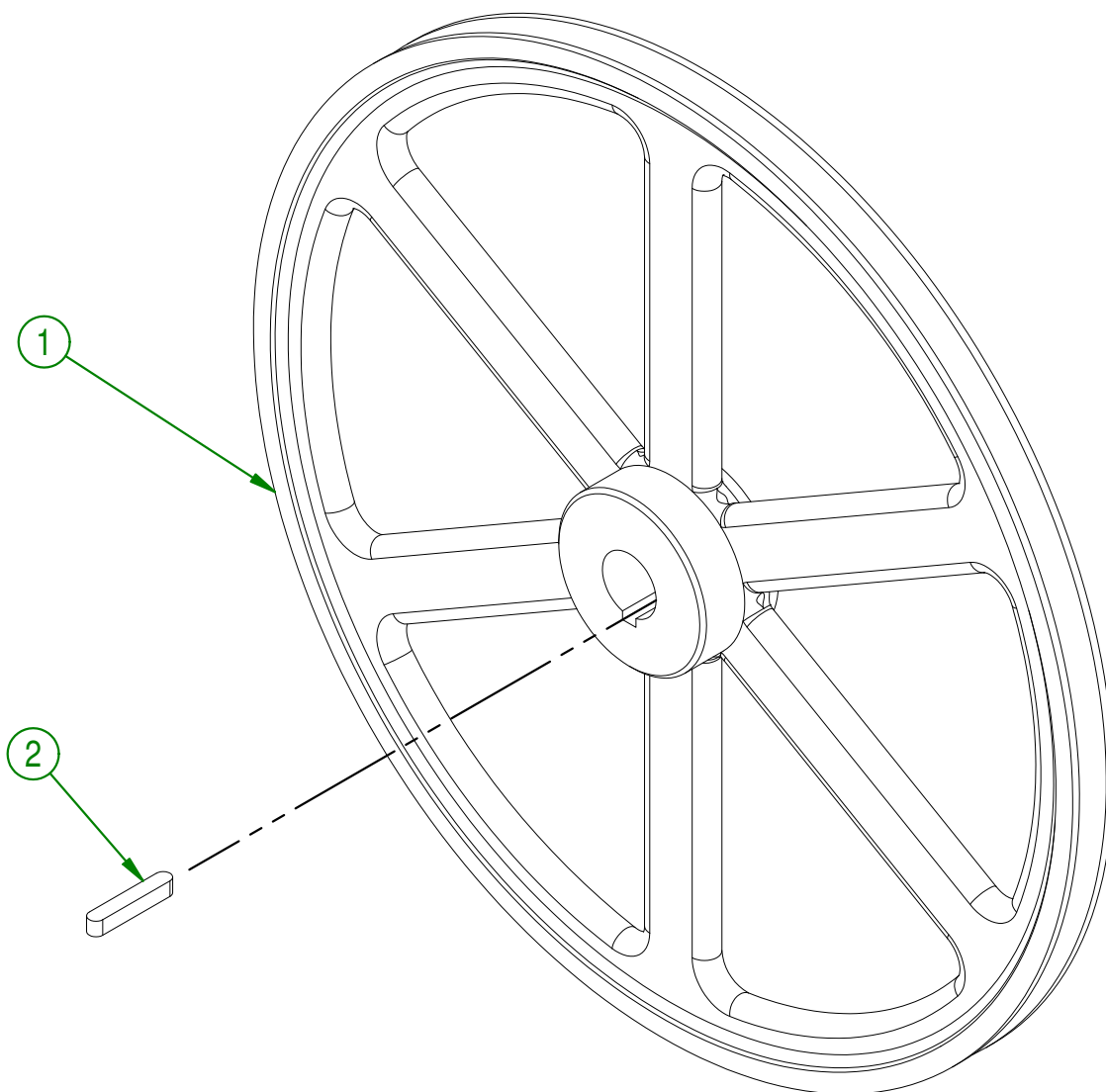
56-55-0046

#	PART #	Qty	TITLE
11	NC13-37-0587	1	DEFLECTOR (3 H.P.)
12	56-13-2005	1	MOTOR PULLEY
13	NC01-69-0411	5	SPRING PIN Ø3/16" X 1/2" LG
14	NC01-37-0008	1	HEX. BOLT GR8 1/4-28 X 1 1/2"
15	NC02-32-0010	1	LOCK WASHER ZINC 1/4"
16	36-01-2430	1	WASHER



<b>AGRIMETAL</b>	
<b>HONDA 3 H.P. MOTOR GROUP</b>	
CREATION : 23/08/19	ASSEMBLY : <b>56-57-0040</b>
REVISION : 30/08/19	AUTHOR : F.HÉLIE   Page 16 de 25

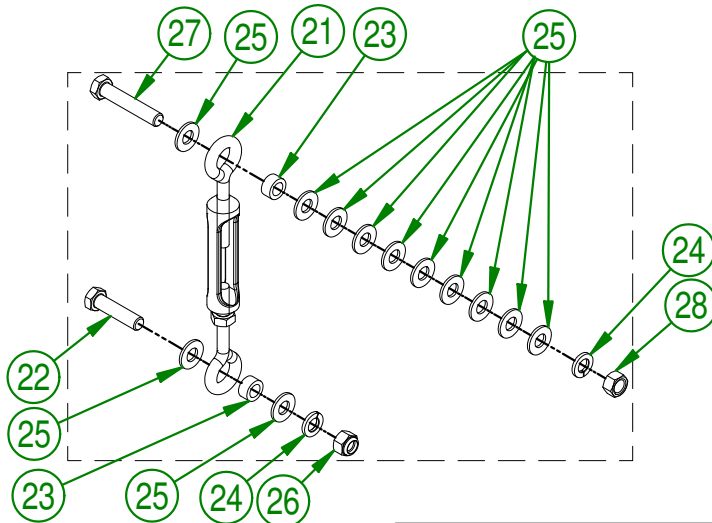
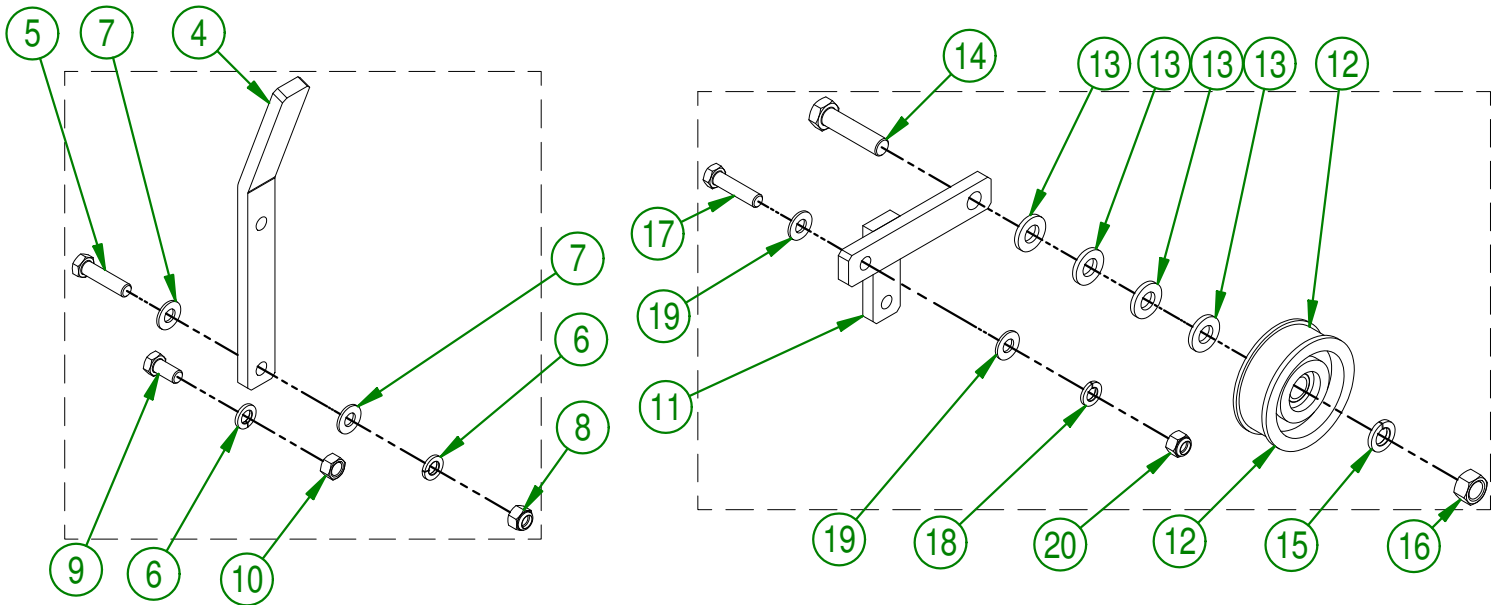
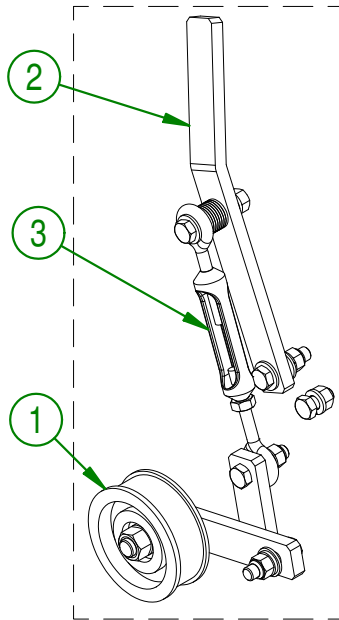
#	PART #	Qty	TITLE
1	NCI4-62-0216	1	PULLEY MA153 X Ø1" KW 1/4" 2SS
2	NC01-65-0087	1	KEY 1/4 X 1/4 X 1 1/2"

**AGRIMETAL**

PULLEY GROUP MA153 X Ø1" KW 1/4" 2SS

CREATION : 23/08/19  
REVISION : 26/08/19ASSEMBLY : **56-57-0035**

AUTHOR : F.HÉLIE Page 17 de 25



<b>AGRIMETAL</b>	
<b>BELT TENSIONER GROUP</b>	
CREATION : 23/08/19	ASSEMBLY : <b>56-57-0045</b>
REVISION : 23/08/19	AUTHOR : F.HÉLIE Page 18 de 25

## 56-57-0045

#	PART #	Qty	TITLE
1	56-57-0125	1	BELT TENSIONER GROUP
2	56-57-0135	1	TENSIONER ARM GROUP
3	56-57-0145	1	EYE TO EYE ADJUSTMENT GROUP

## 56-57-0135

#	PART #	Qty	TITLE
4	56-05-2000	1	TENSIONER ARM
5	NC01-17-0116	1	HEX. BOLT GR2 ZINC 3/8-16 X 1 1/2"
6	NC02-32-0012	2	LOCK WASHER ZINC 3/8"
7	01-01-2485	2	FLAT WASHER 14 GA X 13/16"OD X 25/64" ID
8	NC01-96-0011	1	NYLON NUT 3/8-16
9	NC01-17-0112	1	HEX. BOLT GR2 ZINC 3/8-16 X 3/4"
10	NC02-07-0018	1	HEX. NUT ZINC 3/8-16

## 56-57-0125

#	PART #	Qty	TITLE
11	56-50-0055	1	BELT TENSIONER
12	01-39-0600	1	IDLER PULLEY PI-300 ASSY
13	01-01-0925	4	WASHER
14	NC01-17-0251	1	HEX. BOLT GR2 ZINC 1/2-13 X 2"
15	NC02-32-0014	1	LOCK WASHER ZINC 1/2"
16	NC02-07-0020	1	HEX. NUT ZINC 1/2-13
17	NC01-17-0116	1	HEX. BOLT GR2 ZINC 3/8-16 X 1 1/2"
18	NC02-32-0012	1	LOCK WASHER ZINC 3/8"
19	01-01-2485	2	FLAT WASHER 14 GA X 13/16"OD X 25/64" ID
20	NC01-96-0011	1	NYLON NUT 3/8-16

## 56-57-0145

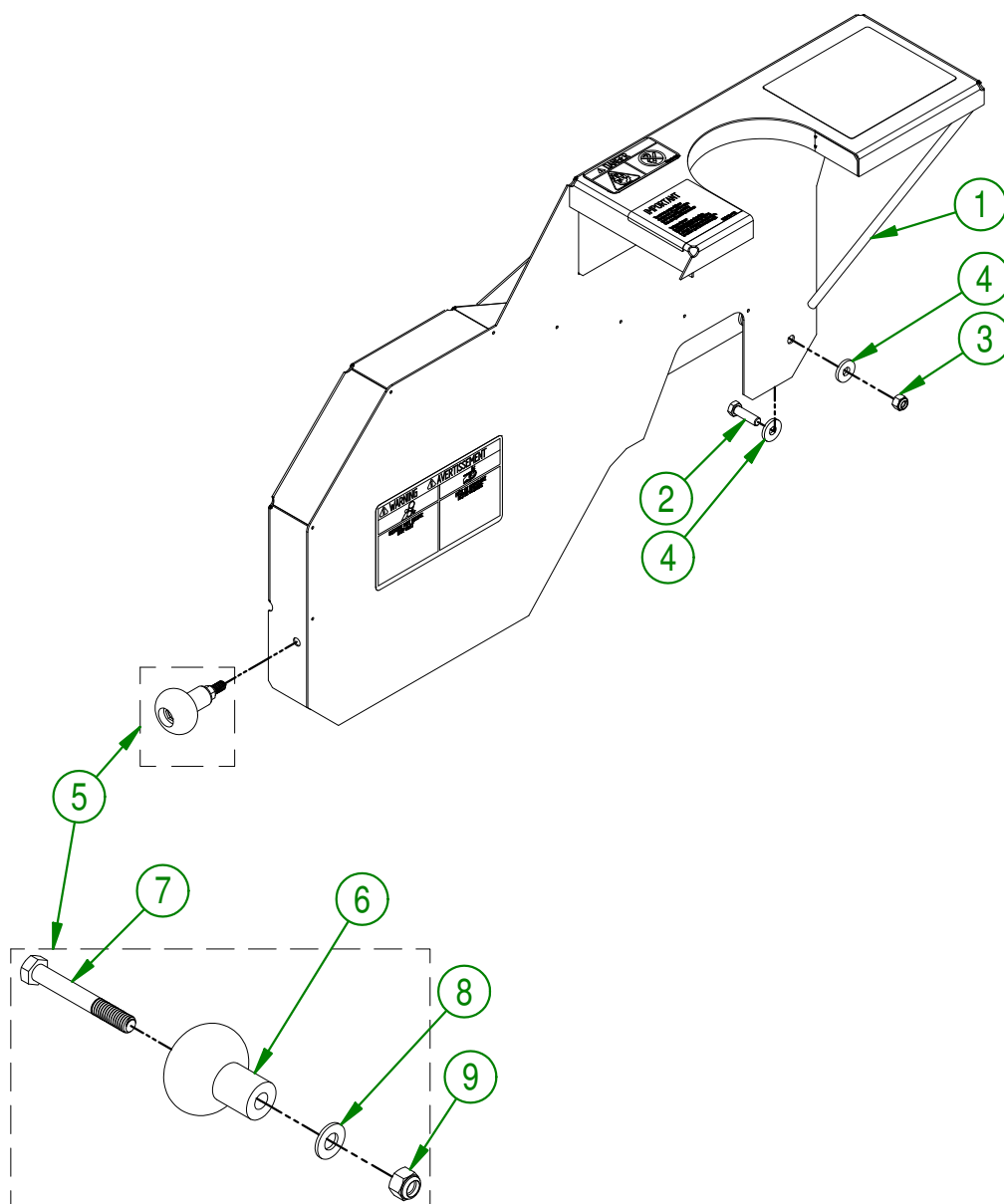
#	PART #	Qty	TITLE
21	01-41-0055	1	TURNBUCKLE 5/16-18
22	NC01-17-0116	1	HEX. BOLT GR2 ZINC 3/8-16 X 1 1/2"
23	01-09-0005	2	BUSHING
24	NC02-32-0012	2	LOCK WASHER ZINC 3/8"
25	01-01-2485	12	FLAT WASHER 14 GA X 13/16"OD X 25/64" ID
26	NC01-96-0011	1	NYLON NUT 3/8-16
27	NC01-17-0118	1	HEX. BOLT GR2 ZINC 3/8-16 X 2"
28	NC02-07-0018	1	HEX. NUT ZINC 3/8-16

56-57-0050

#	PART #	Qty	TITLE
1	56-57-0051	1	MOTOR GUARD GROUP (STICKER INCLUDED)
2	NC01-17-0115	2	HEX. BOLT GR2 ZINC 3/8-16 X 1 1/4"
3	NC01-96-0011	2	NYLON NUT 3/8-16
4	21-01-0950	4	FLAT WASHER 10GA 1.005" DIA X 25/64"
5	55-55-0010	1	TABLE PLASTIC BALL ASSEMBLY

55-55-0010

#	PART #	Qty	TITLE
6	NC17-46-0018	1	HANDLE KNOB
7	NC01-17-0121	1	HEX. BOLT GR2 ZINC 3/8-16 X 2 1/2"
8	01-01-2485	1	FLAT WASHER 14 GA X 13/16"OD X 25/64" ID
9	NC01-96-0011	1	NYLON NUT 3/8-16



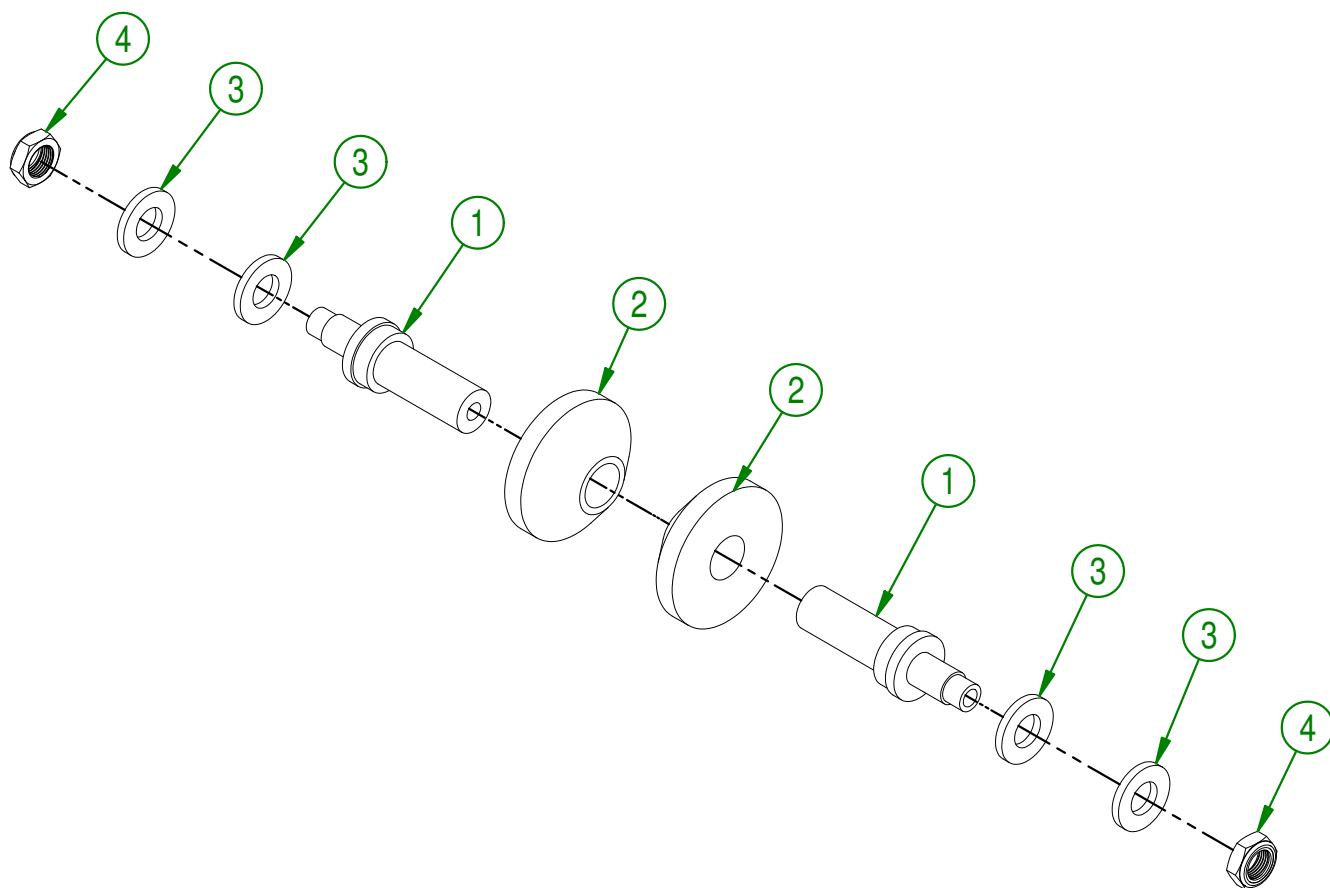
**AGRIMETAL**  
MOTOR GUARD GROUP

CREATION : 23/08/19  
REVISION : 23/08/19

ASSEMBLY : **56-57-0050**

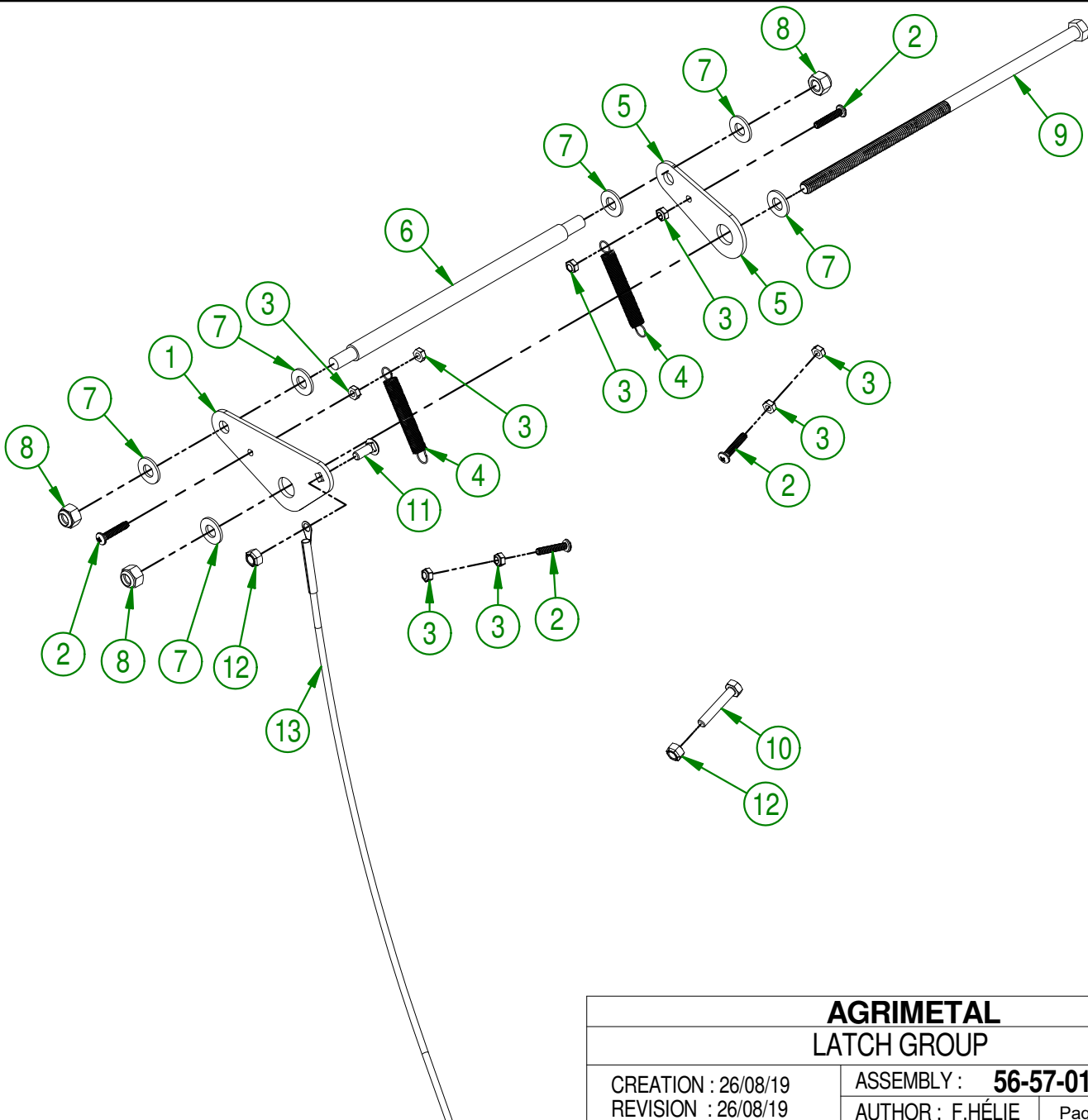
AUTHOR : F.HÉLIE | Page 20 de 25

#	PART #	Qty	TITLE
1	56-13-2000	2	SLIDING SLAB SHAFT
2	56-42-0140	2	SLIDING SLAB SHAFT GUIDE
3	22-04-6805	4	FLAT WASHER BEARING BASE
4	NC01-98-0017	2	HEX. BLOC NUT NYLO. SPEC. 3/4-16



<b>AGRIMETAL</b>	
<b>SLIDING SLAB GROUP</b>	
CREATION : 23/08/19	ASSEMBLY : <b>56-57-0060</b>
REVISION : 23/08/19	AUTHOR : F.HÉLIE   Page 21 de 25

#	PART #	Qty	TITLE
1	56-01-0936	1	LATCH (RIGHT)
2	NC02-40-0083	4	MÉCA.SCREW T. ROUND . SQUARE 10-24 X 1 OR 3/16 X 1
3	NC01-96-0006	8	NYLON NUT ZINC 10-24
4	NC13-85-0034	2	SPRING $\varnothing.033''$ X $\varnothing.380''$ X 2 1/4'' LG
5	56-01-0940	1	LATCH (LEFT)
6	56-13-0615	1	LATCH COUPLING
7	01-01-2485	6	FLAT WASHER 14 GA X 13/16''OD X 25/64'' ID
8	NC01-96-0011	3	NYLON NUT 3/8-16
9	NC01-25-0158	1	HEX. BOLT GR5 NC ZINC 3/8-16 X 11
10	NC01-17-0008	1	HEX. BOLT GR2 ZINC 1/4-20 X 1 1/2''
11	NC01-04-0002	1	CARR. BOLT GR2 ZINC 1/4-20 X 5/8''
12	NC01-96-0009	2	NYLON-INSERT LOCKNUT ZINC 1/4-20
13	NC17-02-0302	1	CONVEYOR CABLE ASSEMBLY



**AGRIMETAL**  
**LATCH GROUP**

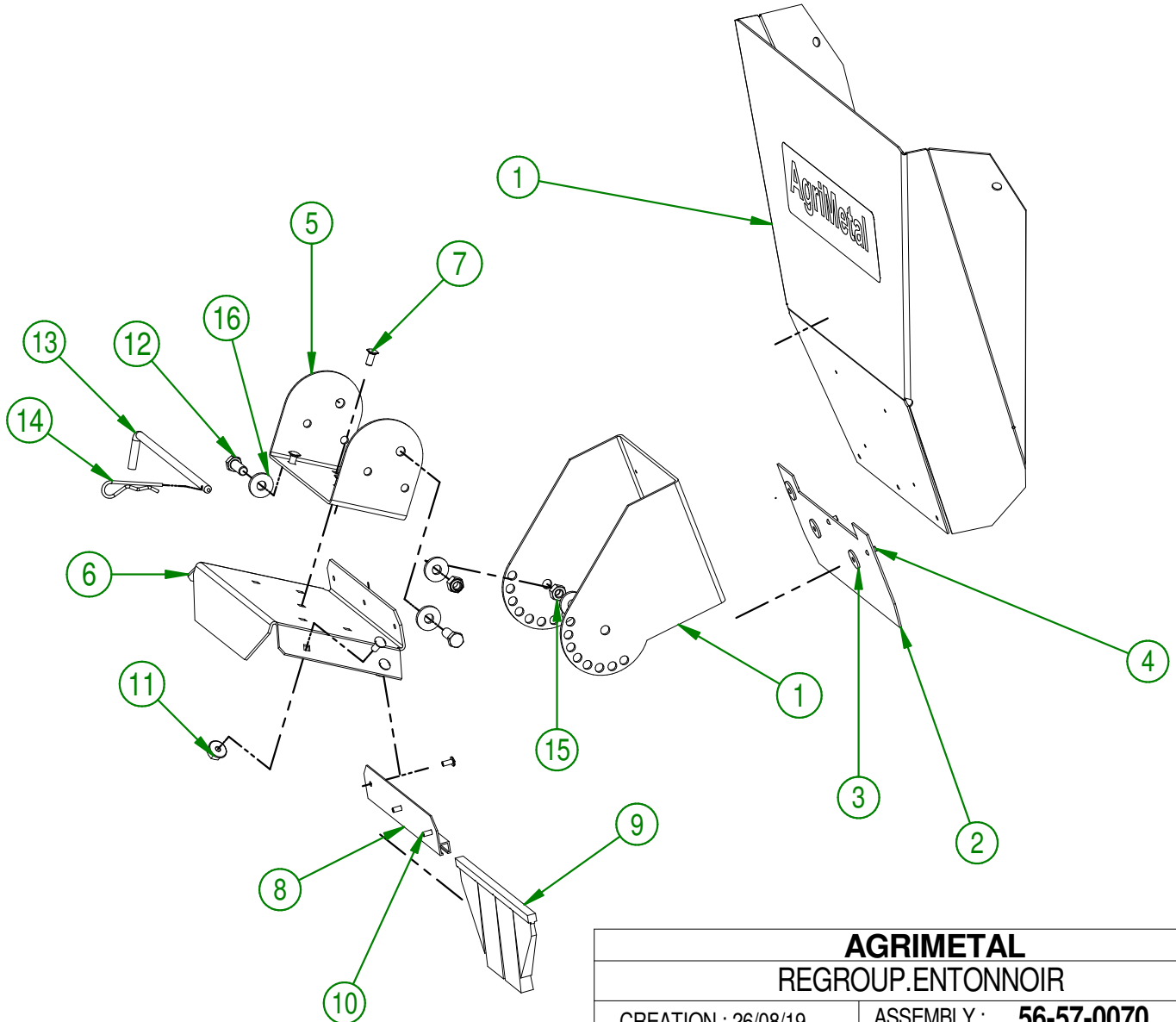
CREATION : 26/08/19  
REVISION : 26/08/19

ASSEMBLY : **56-57-0100**

AUTHOR : F.HÉLIE Page 22 de 25

56-57-0070

#	PART #	Qty	TITLE
1	56-50-0040	1	FUNNEL
2	56-42-0030	1	FUNNEL BIB
3	16-01-2720	3	WASHER 13/16" DIA. X 13/64"
4	NC01-78-0016	3	ALUMINIUM BLIND POP RIVET STEEL MANDREL 0.187 X 0.690
5	56-01-7545	1	FUNNEL HINGE BRACKET
6	56-03-5400	1	TOP OF SLAB
7	NC01-04-0001	9	CARR. BOLT GR2 ZINC 1/4-20 X 1/2"
8	NC13-80-0238	1	PROFILE h-TYPE FOR BRUSH #7 X 24" LG.
9	NC13-80-0237	1	BLACK NYLON BRUSH .030 X 1 1/2" HAUT X 25"
10	NC01-78-0015	3	RIVET 3/16"
11	NC02-14-0017	9	FLANGED NUT GR. B 1/4-20
12	NC01-17-0114	2	HEX. BOLT GR2 ZINC 3/8-16 X 1"
13	56-13-0300	1	FUNNEL LOCK
14	NC01-63-0015	1	COTTER PIN Z 1/8" X 2 5/8"
15	NC01-96-0011	2	NYLON NUT 3/8-16
16	21-01-0950	4	FLAT WASHER 10GA 1.005" DIA X 25/64"



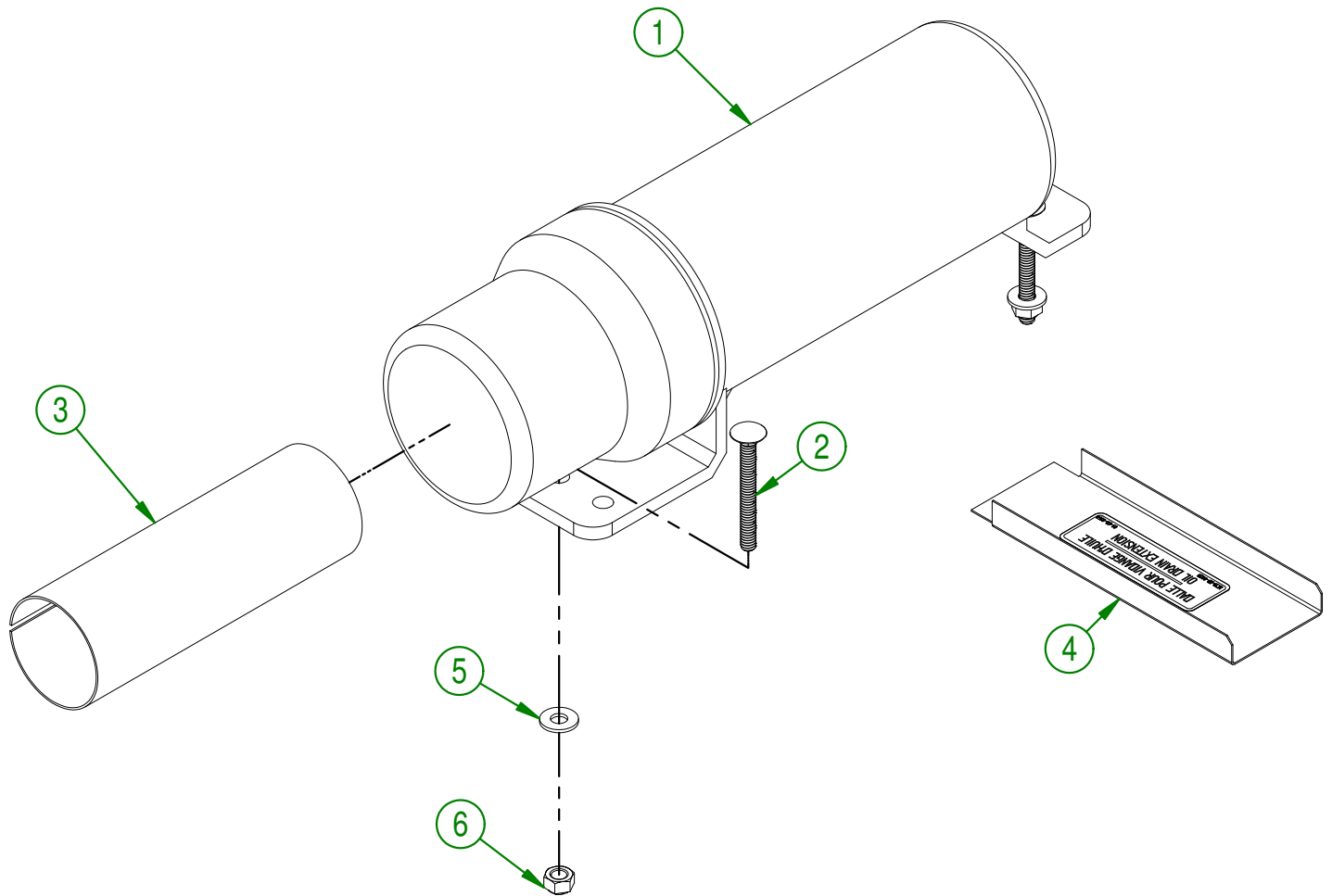
**AGRIMETAL**  
REGROUP.ENTONNOIR

CREATION : 26/08/19  
REVISION : 03/06/21

ASSEMBLY : **56-57-0070**  
AUTHOR : F.HÉLIE



#	PART #	Qty	TITLE
1	NCI3-30-0237	1	PLASTIC TUBE FOR OPERATOR'S MANUAL
2	NC01-04-0010	2	HEX BOLT CARR.GR2 ZINC 1/4-20 X 2 1/4" LG.
3	56-98-0520	1	CONVEYOR OPERATION MAN.
4	01-55-0030	1	DRAIN OIL SLAB "STICKER INCLUDED"
5	NC02-25-0007	2	WASHER ZINC 0.281 = 9/32
6	NC01-96-0009	2	NYLON-INSERT LOCKNUT ZINC 1/4-20

**AGRIMETAL**

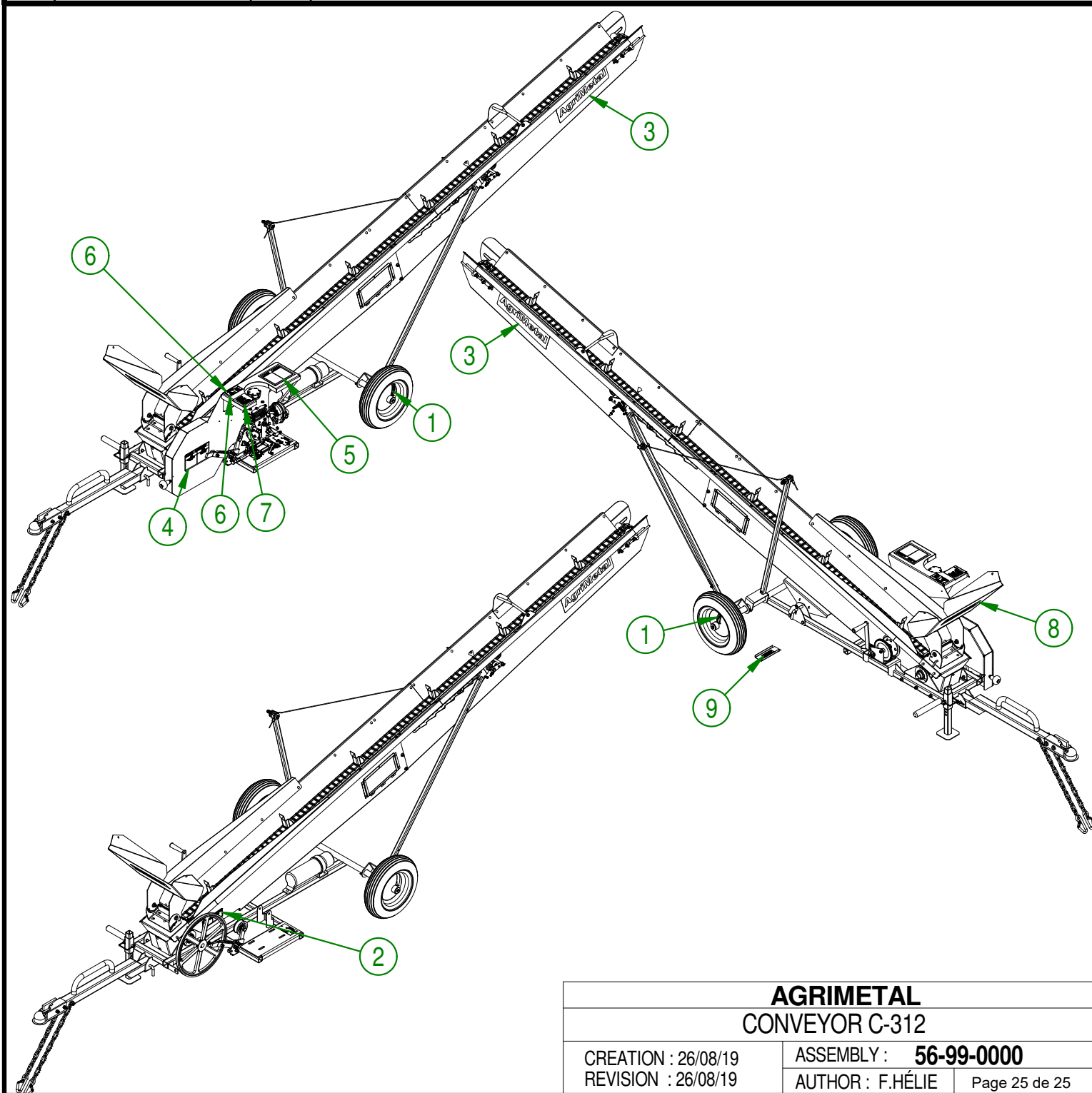
OPERATION MAN. GROUP

CREATION : 26/08/19  
 REVISION : 26/08/19

ASSEMBLY : **56-57-0085**

AUTHOR : F.HÉLIE Page 24 de 25

#	PART #	QTY	TITLE
1	NCI3-33-0024	2	STICKER GREASE HERE
2	NCI3-33-0113	1	STICKER WARNING
3	NCI3-33-0001	2	STICKER AGRIMETAL
4	NCI3-33-0018	1	STICKER WARNING
5	NCI3-33-0226	1	STICKER "CAUTION / READ OPERATOR MANUAL"
6	NCI3-33-0252	1	STICKER (FIRE RISK)
7	NCI3-33-0151	1	STICKER IMPORTANT
8	NCI3-33-0035	1	STICKER AGRIMETAL
9	NCI3-33-0023	1	STICKER OIL DRAIN EXTENSION



**AGRIMETAL**  
**CONVEYOR C-312**

CREATION : 26/08/19  
 REVISION : 26/08/19

ASSEMBLY : **56-99-0000**

AUTHOR : F.HÉLIE Page 25 de 25