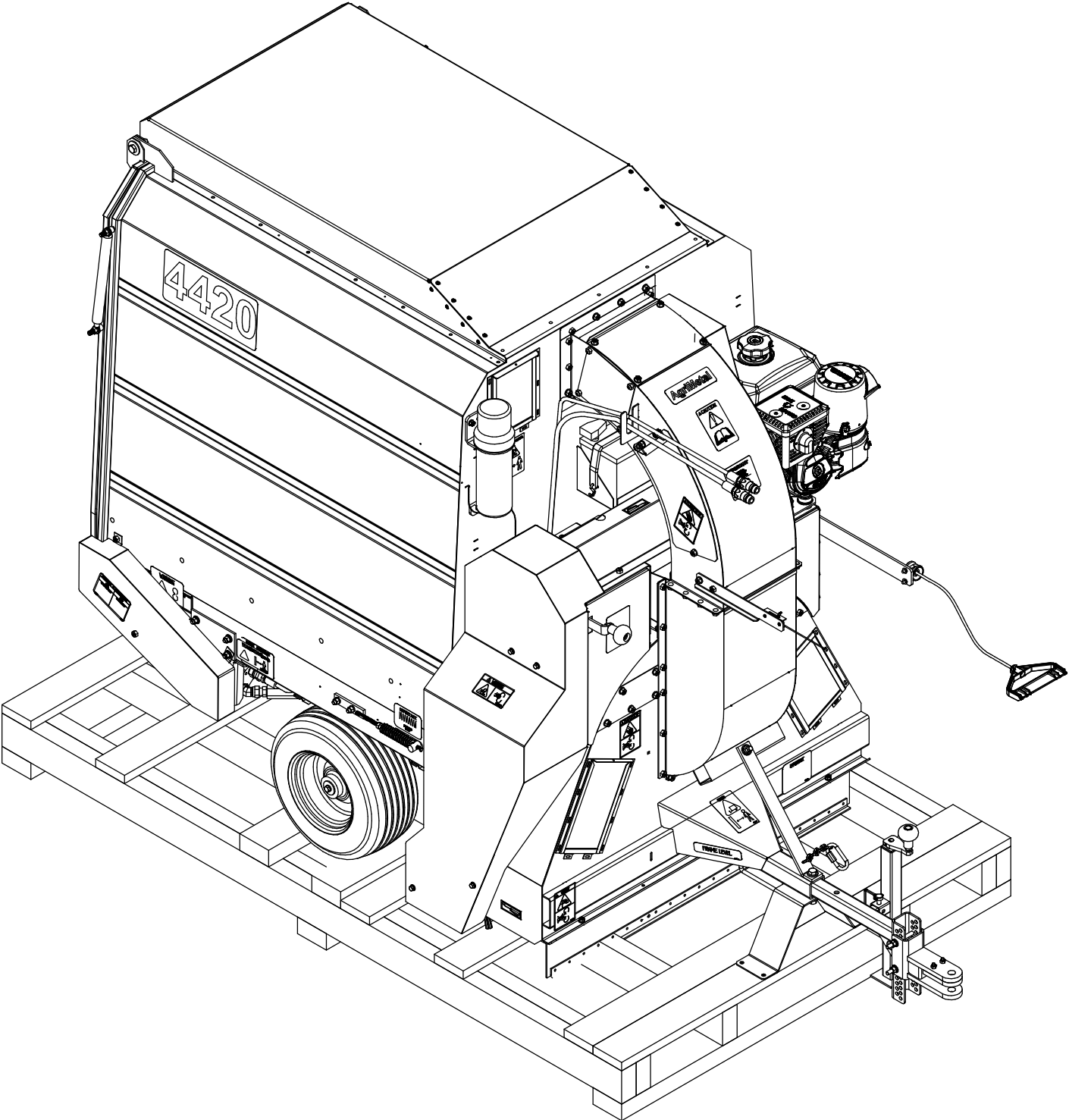
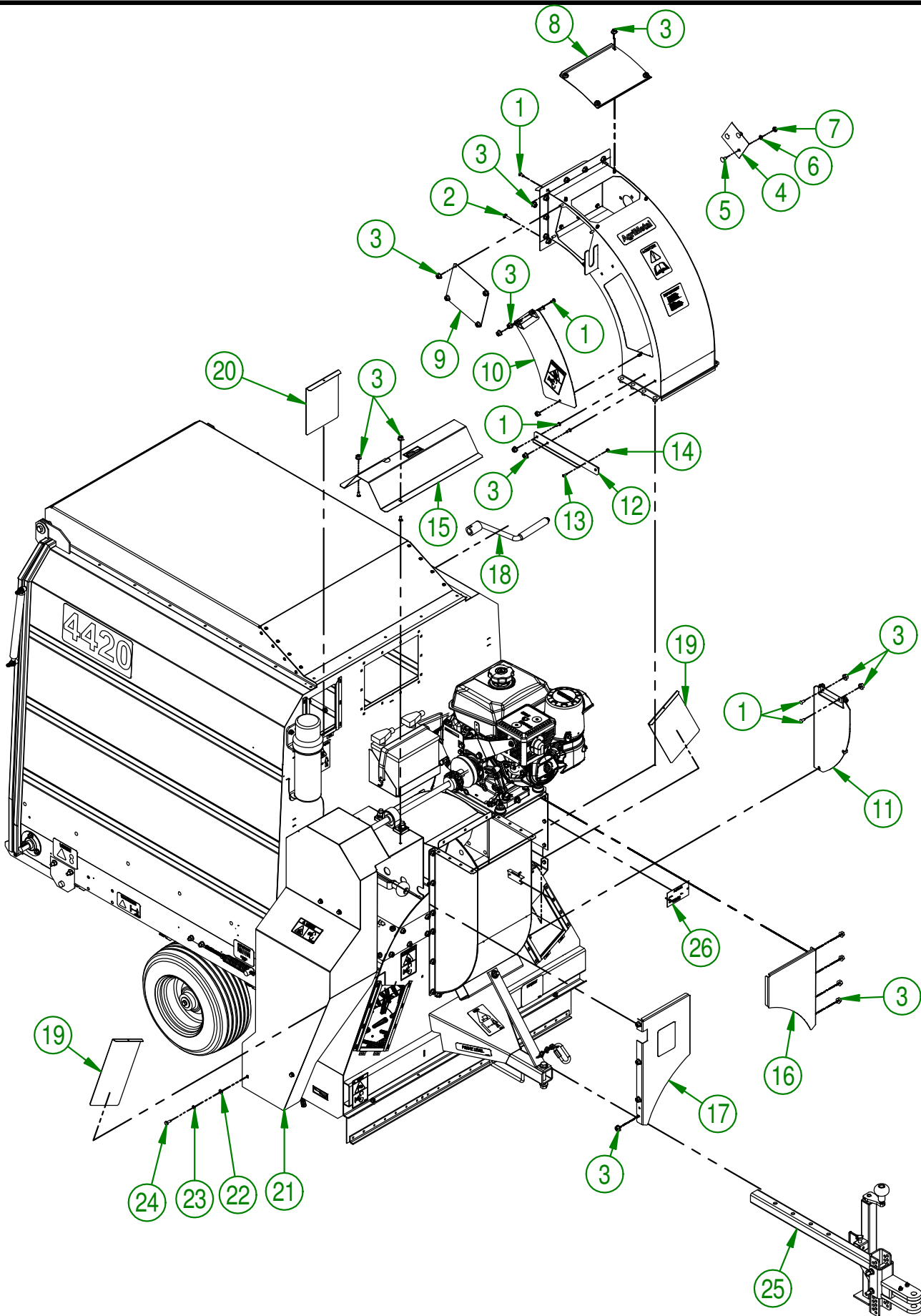


# AgriMetal

## PARTS LIST



# LEAF AND DEBRIS COLLECTOR 4420



|  |                                    |
|--|------------------------------------|
| <b>AGRIMETAL</b>                                       |                                    |
| <b>LEAF COLLECTOR 4420 (NYLON BRUSH) 9.5 HP KOHLER</b> |                                    |
| CREATION : 08/08/17                                    | ASSEMBLY : <b>23-99-0511</b>       |
| REVISION : 29/10/18                                    | AUTHOR : J.KABWE      Page 1 de 38 |

| #  | PART #       | Qty | TITLE  |
|----|--------------|-----|--|
| 1  | NC01-04-0001 | 29  | CARR. BOLT GR2 ZINC 1/4-20 X 1/2"                |
| 2  | NC01-04-0005 | 4   | CARR. BOLT GR2 ZINC 1/4-20 X 1"                  |
| 3  | NC02-14-0017 | 52  | FLANGED NUT GR. B 1/4-20                         |
| 4  | 23-01-3200   | 1   | ACCESS DOOR GUARD (BEARING)                      |
| 5  | NC01-04-0055 | 3   | CARR. BOLT GR2 ZINC 5/16-18 X 5/8"               |
| 6  | NC02-32-0011 | 3   | LOCK WASHER ZINC 5/16"                           |
| 7  | NC02-07-0017 | 3   | HEX. NUT 5/16-18                                 |
| 8  | 23-01-3095   | 1   | ACCESS DOOR (ELBOW TOP)                          |
| 9  | 23-01-3085   | 1   | ACCESS DOOR (ELBOW SIDE)                         |
| 10 | 23-55-1056   | 1   | CHUT ELBOW ACCESS DOOR "STICKER INCLUDED"        |
| 11 | 23-55-0075   | 1   | LEFT IMPELLER BOX ACCESS DOOR "STICKER INCLUDED" |
| 12 | 23-01-1625   | 1   | THROTTLE-LEVER SUPPORT                           |
| 13 | NC02-40-0080 | 2   | MACHINE SCREWS SQUARE SOCKET #10-24 X 1/2" LG    |
| 14 | NC01-96-0006 | 2   | NYLON NUT ZINC 10-24                             |
| 15 | 23-57-1233   | 1   | BEARING DRIVE SHAFT GUARD " STICKER INCLUDED"    |
| 16 | 23-01-3195   | 1   | ENGINE BASE SUPPORT GUARD                        |
| 17 | 23-57-0243   | 1   | BEARING SUPPORT GUARD "STICKER INCLUDED"         |
| 18 | 23-55-0050   | 1   | CRANK HANDLE ASSY.                               |
| 19 | 23-42-0005   | 2   | CLEAR ACCESS DOOR (SUCTION BOX)                  |
| 20 | 23-42-0010   | 1   | CLEAR ACCESS DOOR (BOX)                          |
| 21 | 23-57-0250   | 1   | PULLEY GUARD " STICKER INCLUDED"                 |
| 22 | NC02-25-0007 | 4   | WASHER ZINC 0.281 = 9/32                         |
| 23 | NC02-32-0010 | 4   | LOCK WASHER ZINC 1/4"                            |
| 24 | NC01-17-0003 | 4   | HEX. BOLT GR2 ZINC 1/4-20 X 5/8"                 |
| 25 | 23-55-0035   | 1   | REMOVABLE HITCH, HAND CLIP & JACK ASSY           |
| 26 | 25-55-0710   | 1   | SERIAL NUMBER PLATE                              |

**AGRIMETAL**

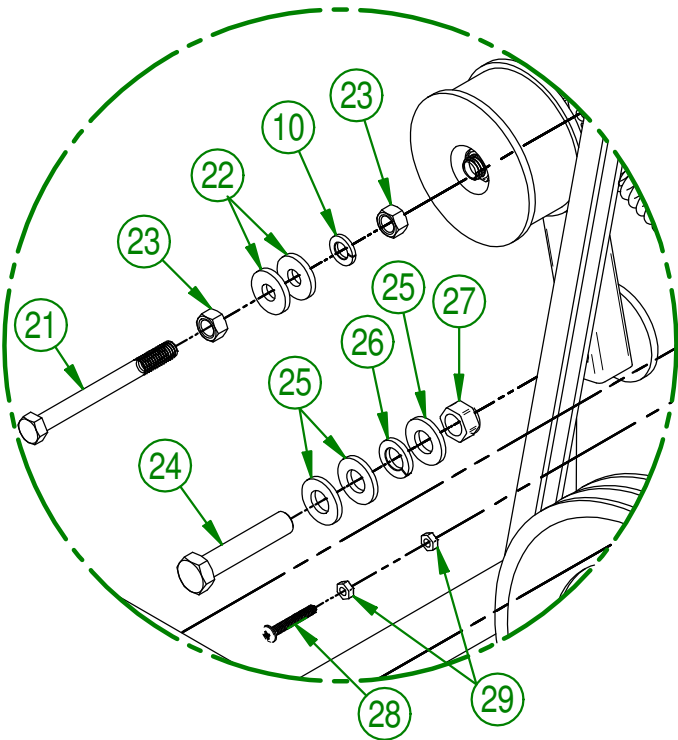
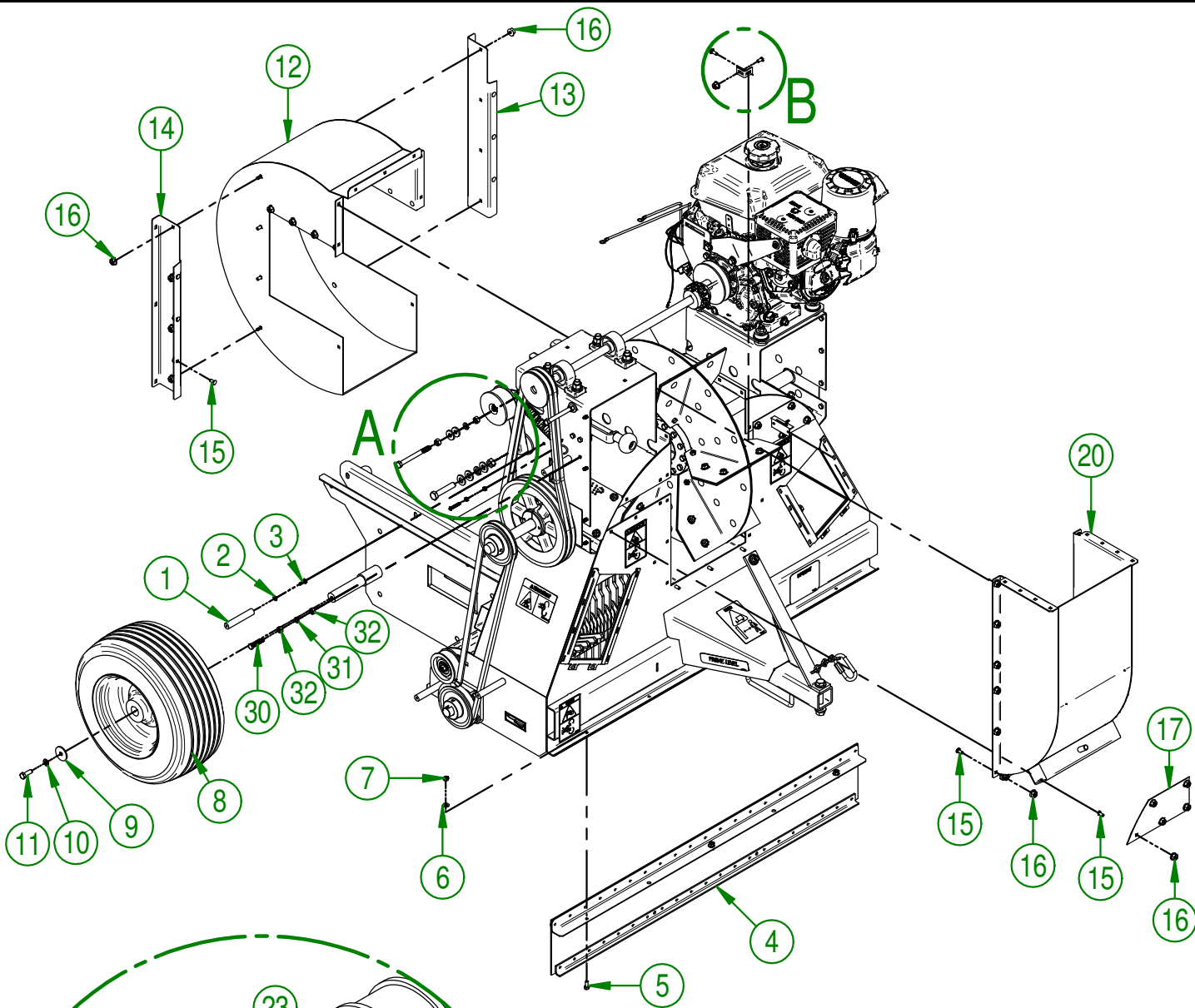
LEAF COLLECTOR 4420 (NYLON BRUSH) 9.5 HP KOHLER

CREATION : 08/08/17  
 REVISION : 29/10/18

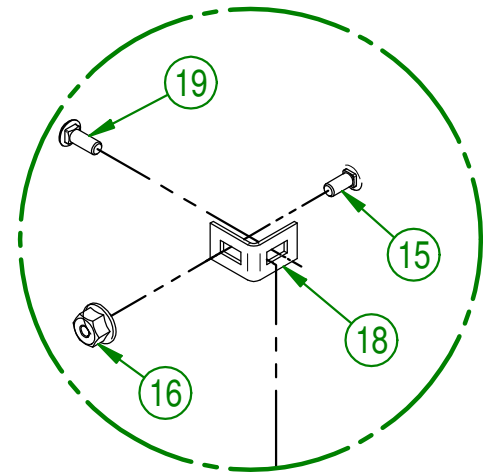
ASSEMBLY : **23-99-0511**

AUTHOR : J.KABWE

Page 2 de 38



**DETAIL A**



**DETAIL B**

|  |                                    |
|--|------------------------------------|
| <b>AGRIMETAL</b>   |                                    |
| KOHLER ENGINE ROTOR HAMMER BRUSH SUCTION PICK-UP HEAD GROUP. |                                    |
| CREATION : 18/09/17  | ASSEMBLY : <b>23-57-1076</b>       |
| REVISION : 29/10/18  | AUTHOR : J.KABWE      Page 3 de 38 |

| #  | PART #       | Qty | TITLE   |
|----|--------------|-----|---|
| 1  | 23-21-0035   | 4   | PULLEY GUARD SUPPORT  |
| 2  | NC02-32-0010 | 4   | LOCK WASHER ZINC 1/4"                                       |
| 3  | NC01-29-0003 | 4   | HEX. BOLT GR5 ZINC 1/4-28 X 5/8"                            |
| 4  | 23-55-0095   | 1   | RUBBER PAD ASSY.  |
| 5  | NC01-17-0003 | 3   | HEX. BOLT GR2 ZINC 1/4-20 X 5/8"                            |
| 6  | NC02-25-0007 | 3   | WASHER ZINC 0.281 = 9/32                                    |
| 7  | NC01-96-0009 | 3   | NYLON-INSERT LOCKNUT ZINC 1/4-20                            |
| 8  | NC14-70-0078 | 2   | WHEEL ASSEMBLY 16" X 6.50-8 BWT 150-180                     |
| 9  | 01-33-0010   | 2   | WASHER  |
| 10 | NC02-32-0012 | 4   | LOCK WASHER ZINC 3/8"                                       |
| 11 | NC01-17-0114 | 2   | HEX. BOLT GR2 ZINC 3/8-16 X 1"                              |
| 12 | 23-50-0005   | 1   | BLOWER CASING (BACK)  |
| 13 | 23-01-3365   | 1   | LEFT CHANNEL BOX SUPPORT                                    |
| 14 | 23-01-3360   | 1   | RIGHT CHANNEL BOX SUPPORT                                   |
| 15 | NC01-04-0001 | 44  | CARR. BOLT GR2 ZINC 1/4-20 X 1/2"                           |
| 16 | NC02-14-0017 | 49  | FLANGED NUT GR. B 1/4-20                                    |
| 17 | 23-01-3350   | 2   | SUCTION BOX ACCESS DOOR                                     |
| 18 | 23-01-2465   | 2   | CASING BLOWER SUPPORT                                       |
| 19 | NC01-04-0002 | 2   | CARR. BOLT GR2 ZINC 1/4-20 X 5/8"                           |
| 20 | 23-50-0010   | 1   | BLOWER CASING FRONT   |
| 21 | NC01-17-0126 | 2   | HEX. BOLT GR2 ZINC 3/8-16                                   |
| 22 | 21-01-0950   | 4   | FLAT WASHER 10GA 1.005" DIA X 25/64"                        |
| 23 | NC02-07-0018 | 4   | HEX. NUT ZINC 3/8-16  |
| 24 | NC01-17-0253 | 1   | HEX. BOLT GR2 ZINC 1/2-13 X 2 1/2"                          |
| 25 | NC02-25-0011 | 3   | WASHER SAE ZINC 17/32 ID                                    |
| 26 | NC02-32-0014 | 1   | LOCK WASHER ZINC 1/2"                                       |
| 27 | NC01-96-0014 | 1   | NYLON-INSERT LOCKNUT ZINC 1/2-13                            |
| 28 | NC02-40-0084 | 1   | MÉCA. SCREW T. ROUND. SQUARE ZINC 10-24 X 1/4 OR 3/16 X 1/4 |
| 29 | NC01-96-0006 | 2   | NYLON NUT ZINC 10-24  |
| 30 | NC01-17-0062 | 1   | HEX. BOLT GR2 ZINC 5/16-18 X 1 1/2" TOTAL LENGTH            |
| 31 | NC02-32-0011 | 1   | LOCK WASHER ZINC 5/16"                                      |
| 32 | NC02-07-0017 | 2   | HEX. NUT 5/16-18  |

**AGRIMETAL**

KOHLER ENGINE ROTOR HAMMER BRUSH SUCTION PICK-UP HEAD GROUP.

CREATION : 18/09/17  
 REVISION : 29/10/18

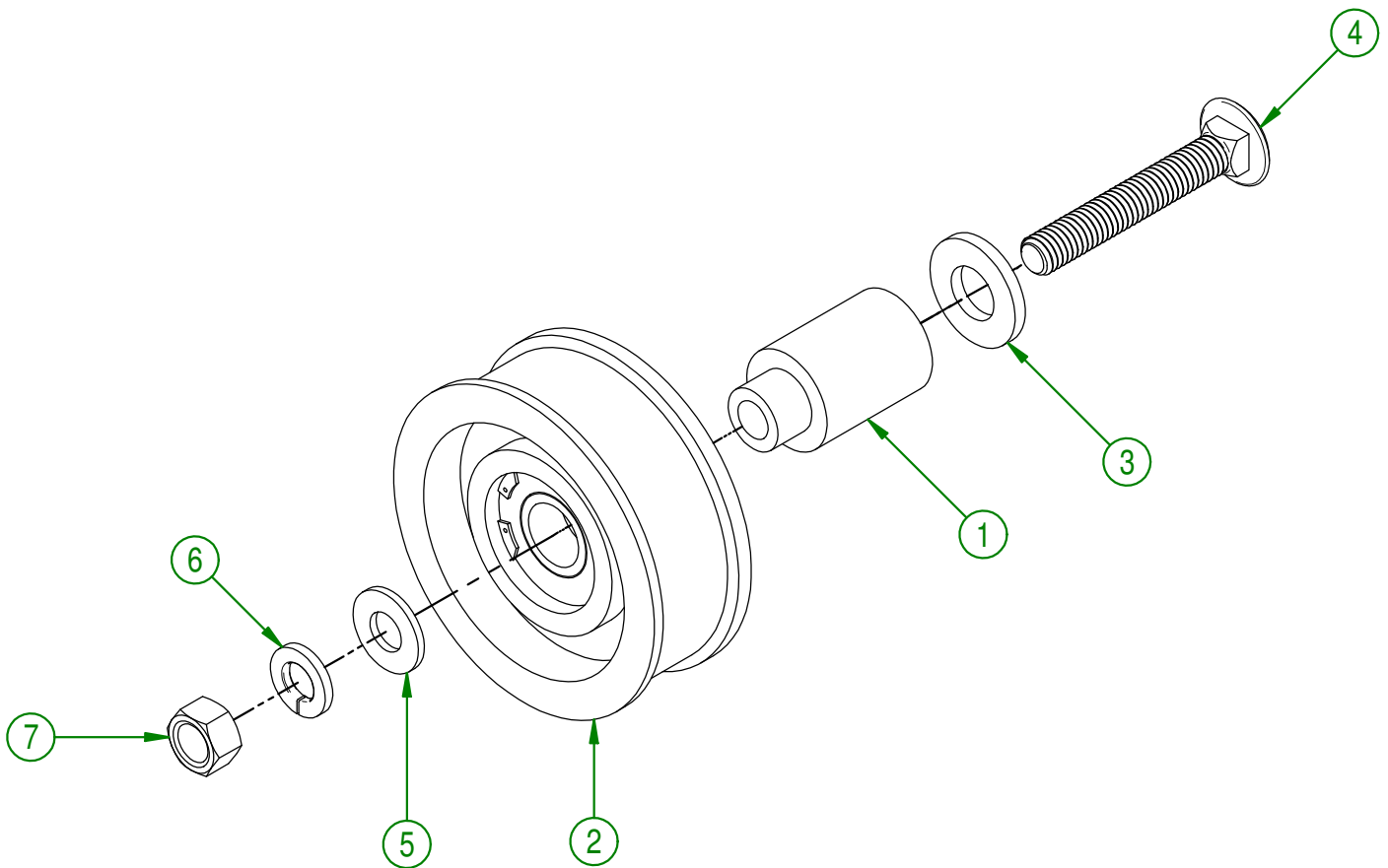
ASSEMBLY : **23-57-1076**

AUTHOR : J.KABWE

Page 4 de 38

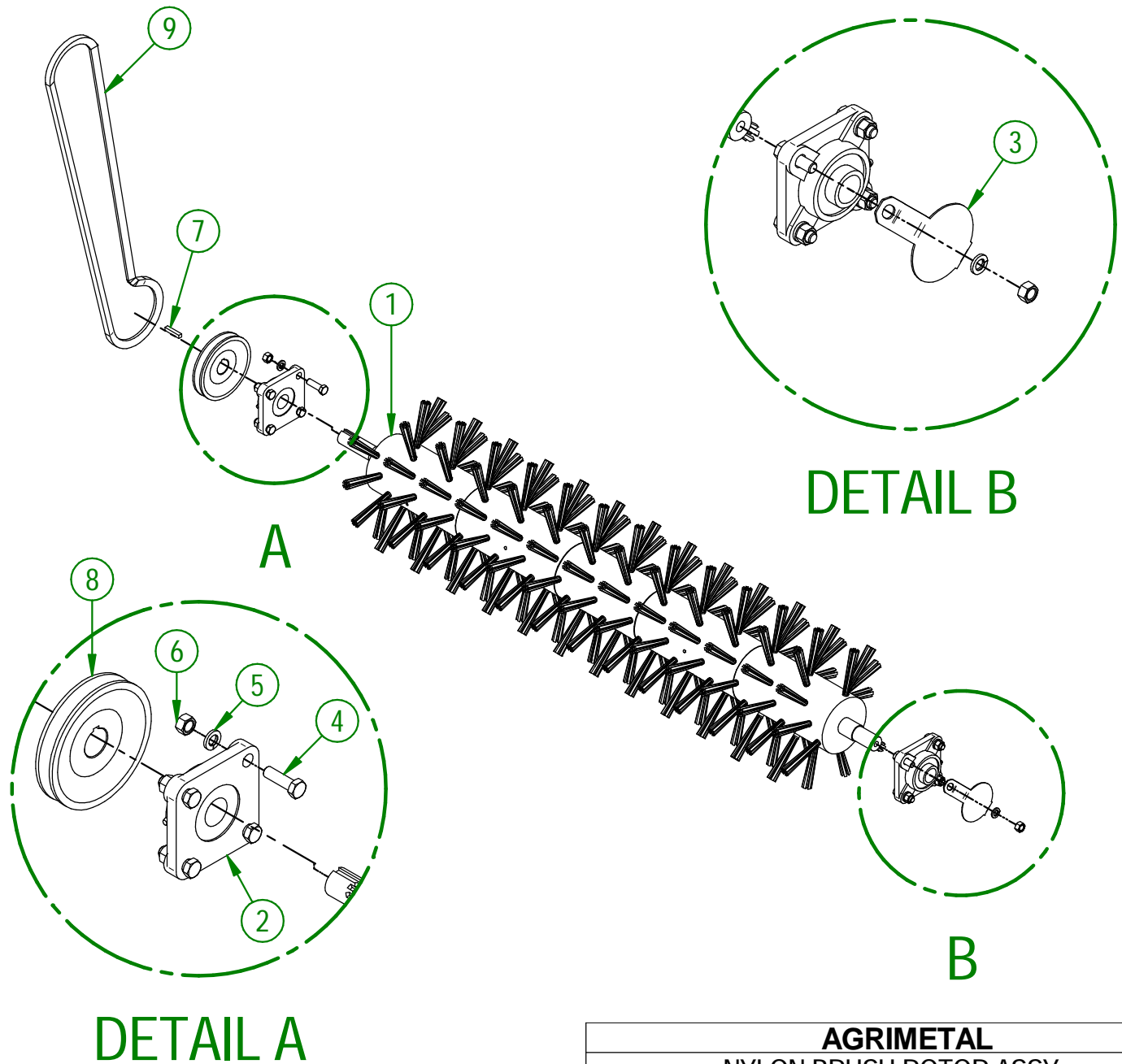
23-57-0170

| # | PART #       | Qty | TITLE                               |
|---|--------------|-----|-------------------------------------|
| 1 | 23-21-0005   | 1   | BELT TIGHTENER                      |
| 2 | NC17-46-0004 | 1   | IDLER PULLEY PI-300                 |
| 3 | NC02-25-0011 | 1   | WASHER SAE ZINC 17/32 ID            |
| 4 | NC01-04-0115 | 1   | CARR. BOLT GR2 ZINC 3/8-16 X 2 1/2" |
| 5 | 01-01-2485   | 1   | FLAT WASHER                         |
| 6 | NC02-32-0012 | 1   | LOCK WASHER ZINC 3/8"               |
| 7 | NC02-07-0018 | 1   | HEX. NUT ZINC 3/8-16                |



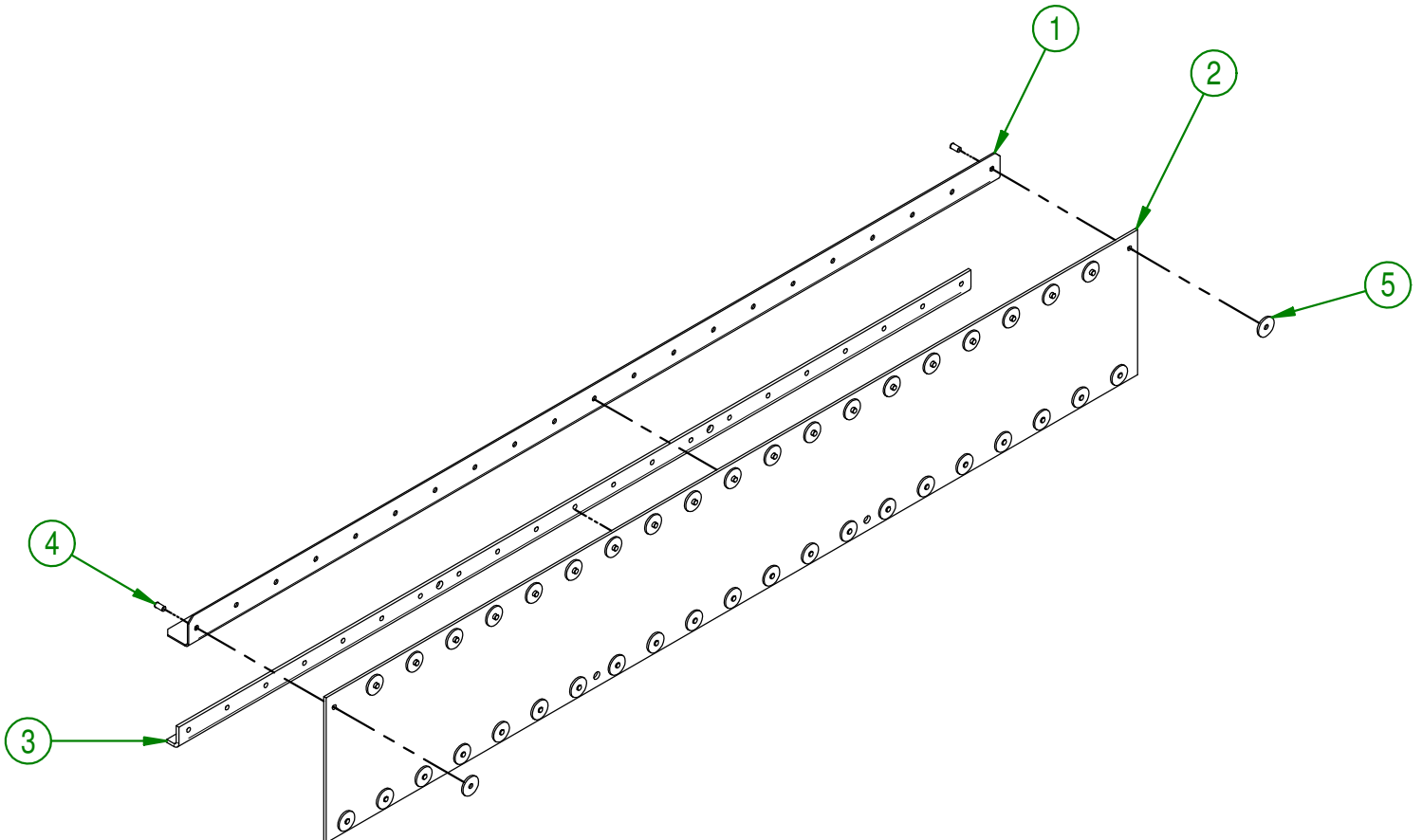
|                                      |                                 |
|--------------------------------------|---------------------------------|
| <b>AGRIMETAL</b>                     |                                 |
| BELT TIGHTENER " IDLER PI-300" ASSY. |                                 |
| CREATION : 07/12/16                  | ASSEMBLY : <b>23-57-0170</b>    |
| REVISION : 25/01/18                  | AUTHOR : J.KABWE   Page 5 de 38 |

| # | PART #       | Qty | TITLE                                       |
|---|--------------|-----|---|
| 1 | 23-55-0115   | 1   | NYLON BRUSH                                 |
| 2 | NC14-75-0023 | 2   | FLANGE BEARING 4 HOLES UCF205-16 1" ID      |
| 3 | 23-01-3600   | 1   | BEARING GUARD                               |
| 4 | NC01-17-0115 | 8   | HEX. BOLT GR2 ZINC 3/8-16 X 1 1/4"          |
| 5 | NC02-32-0012 | 8   | LOCK WASHER ZINC 3/8"                       |
| 6 | NC02-07-0018 | 8   | HEX. NUT ZINC 3/8-16                        |
| 7 | 01-41-0910   | 1   | KEY   |
| 8 | NC14-62-0172 | 1   | CAST IRON PULLEY MA45 X DIA. 1", KW 1/4 2SS |
| 9 | NC14-25-1535 | 1   | 1/2 COGGED RAW EDGE AX-57 V BELT            |



|                         |                              |
|-------------------------|------------------------------|
| <b>AGRIMETAL</b>        |                              |
| NYLON BRUSH ROTOR ASSY. |                              |
| CREATION : 04/08/17     | ASSEMBLY : <b>23-57-0087</b> |
| REVISION : 22/02/22     | AUTHOR : J.KABWE             |

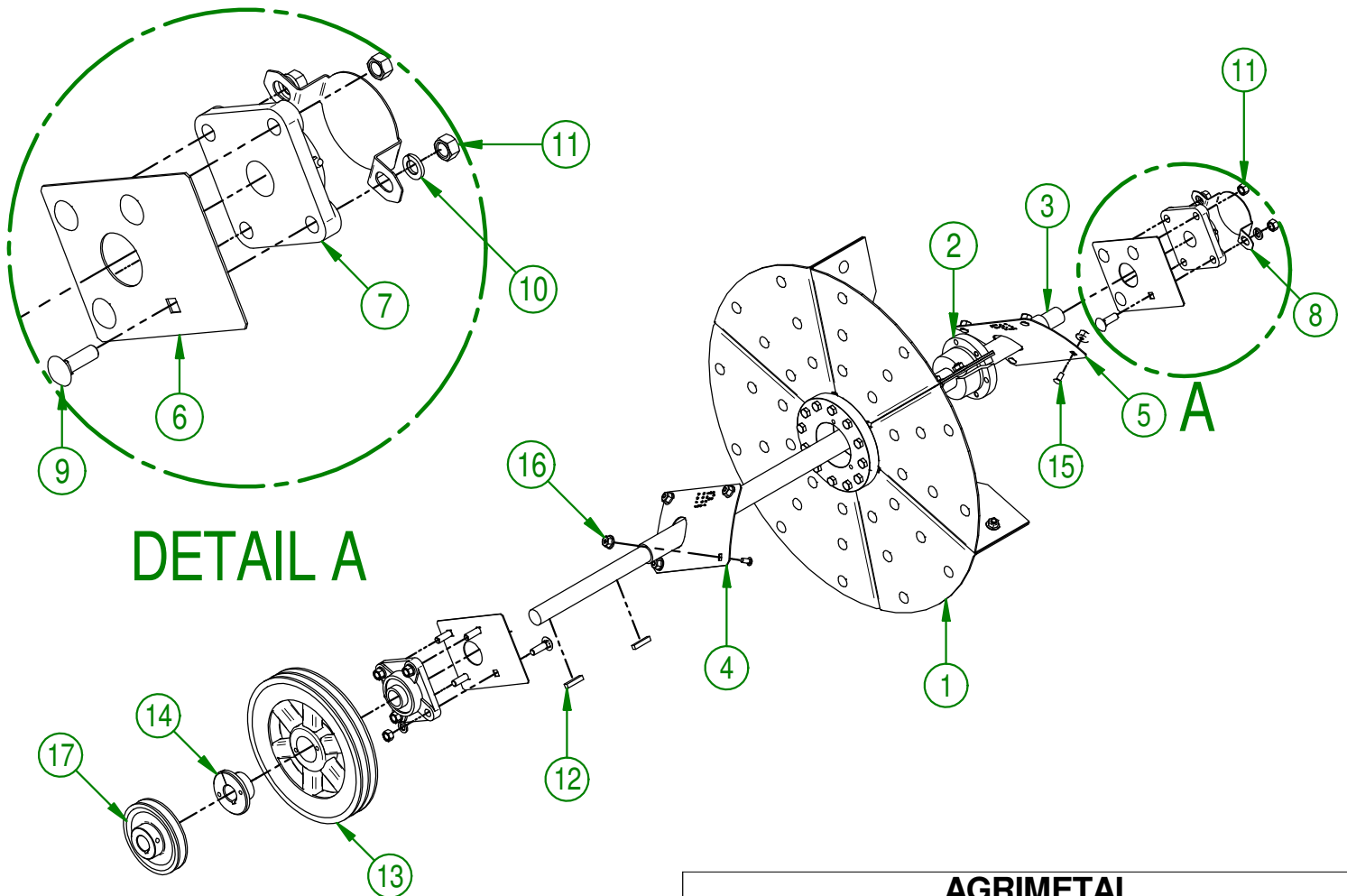
| # | PART #       | Qty | TITLE   |
|---|--------------|-----|---|
| 1 | 23-01-3040   | 1   | RUBBER PAD SUPPORT                                    |
| 2 | NC13-15-0071 | 1   | BLACK RUBBER  |
| 3 | 23-01-1065   | 1   | RUBBER PAD SUPPORT                                    |
| 4 | NC01-78-0016 | 42  | ALUMINIUM BLIND POP RIVET STEEL MANDREL 0.187 X 0.690 |
| 5 | 16-01-2720   | 42  | WASHER 13/16" DIA. X 13/64"                           |



|                         |                                 |
|-------------------------|---------------------------------|
| <b>AGRIMETAL</b>        |                                 |
| <b>RUBBER PAD ASSY.</b> |                                 |
| CREATION : 07/12/16     | ASSEMBLY : <b>23-55-0095</b>    |
| REVISION : 10/01/18     | AUTHOR : J.KABWE   Page 7 de 38 |



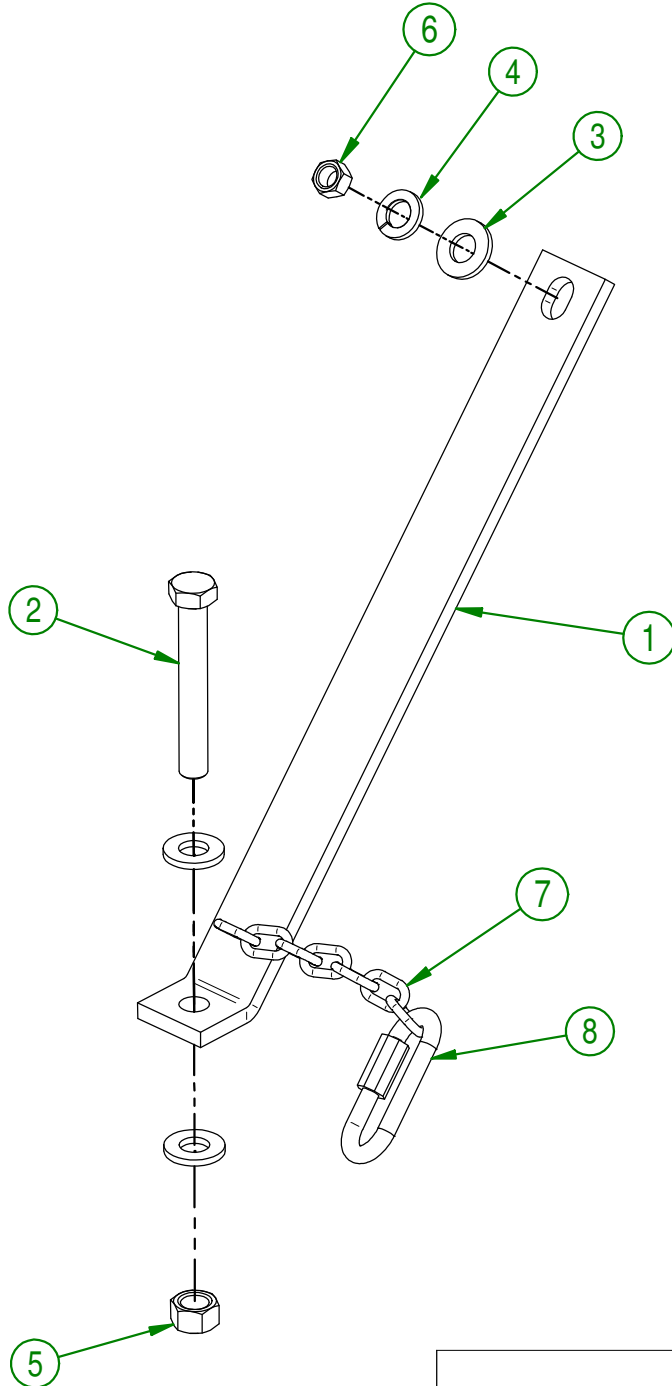
| #  | PART #       | Qty | TITLE                                      |
|----|--------------|-----|--|
| 1  | 23-55-0005   | 1   | IMPELLER                                   |
| 2  | NC14-62-0019 | 1   | QD BUSHING SK I 1/4"                       |
| 3  | 23-13-1605   | 1   | IMPELLER SHAFT                             |
| 4  | 23-01-3375   | 1   | IMPELLER SHAFT GUARD                       |
| 5  | 23-01-3380   | 1   | IMPELLER SHAFT GUARD                       |
| 6  | 23-01-3385   | 2   | IMPELLER SHAFT GUARD                       |
| 7  | NC14-75-0023 | 2   | FLANGE BEARING 4 HOLES UCF205-16 1" ID     |
| 8  | 23-01-3600   | 1   | BEARING GUARD                              |
| 9  | NC01-04-0110 | 8   | CARR. BOLT GR2 ZINC 3/8-16 X 1 1/4"        |
| 10 | NC02-32-0012 | 8   | LOCK WASHER ZINC 3/8"                      |
| 11 | NC02-07-0018 | 8   | HEX. NUT ZINC 3/8-16                       |
| 12 | 01-41-0910   | 2   | KEY  |
| 13 | NC14-62-0228 | 1   | PULLEY QD 2V A-3L-4L X 9.25 OD X L 2MAL 92 |
| 14 | NC14-62-0174 | 1   | BUSHING-BORE CAST IRON PULLEY              |
| 15 | NC01-04-0001 | 8   | CARR. BOLT GR2 ZINC 1/4-20 X 1/2"          |
| 16 | NC02-14-0017 | 8   | FLANGED NUT GR. B 1/4-20                   |
| 17 | NC14-62-0169 | 1   | CAST IRON PULLEY MA40 X 1" DIA. KW 1/4 2SS |



|                       |                               |
|-----------------------|-------------------------------|
| <b>AGRIMETAL</b>      |                               |
| <b>IMPELLER ASSY.</b> |                               |
| CREATION : 06/12/16   | ASSEMBLY : <b>23-57-0105</b>  |
| REVISION : 16/01/19   | AUTHOR : J.KABWE Page 8 de 38 |

23-57-0100

| # | PART #       | Qty | TITLE  |
|---|--------------|-----|--|
| 1 | 23-04-0300   | 1   | HITCH REINFORCEMENT                          |
| 2 | NC01-17-0257 | 1   | HEX. BOLT GR2 ZINC 1/2-13 X 3 1/2"           |
| 3 | NC02-25-0011 | 3   | WASHER SAE ZINC 17/32 ID                     |
| 4 | NC02-32-0014 | 1   | LOCK WASHER ZINC 1/2"                        |
| 5 | NC02-07-0020 | 1   | HEX. NUT ZINC 1/2-13                         |
| 6 | NC02-07-0018 | 1   | HEX. NUT ZINC 3/8-16                         |
| 7 | 26-41-0000   | 1   | SAFETY CHAIN 4.8MM X 2/0 X 58" LONG          |
| 8 | NC01-75-0015 | 1   | RAPID LINK DIA. 5/16"-8MM, 1300-1760 LBS WLL |



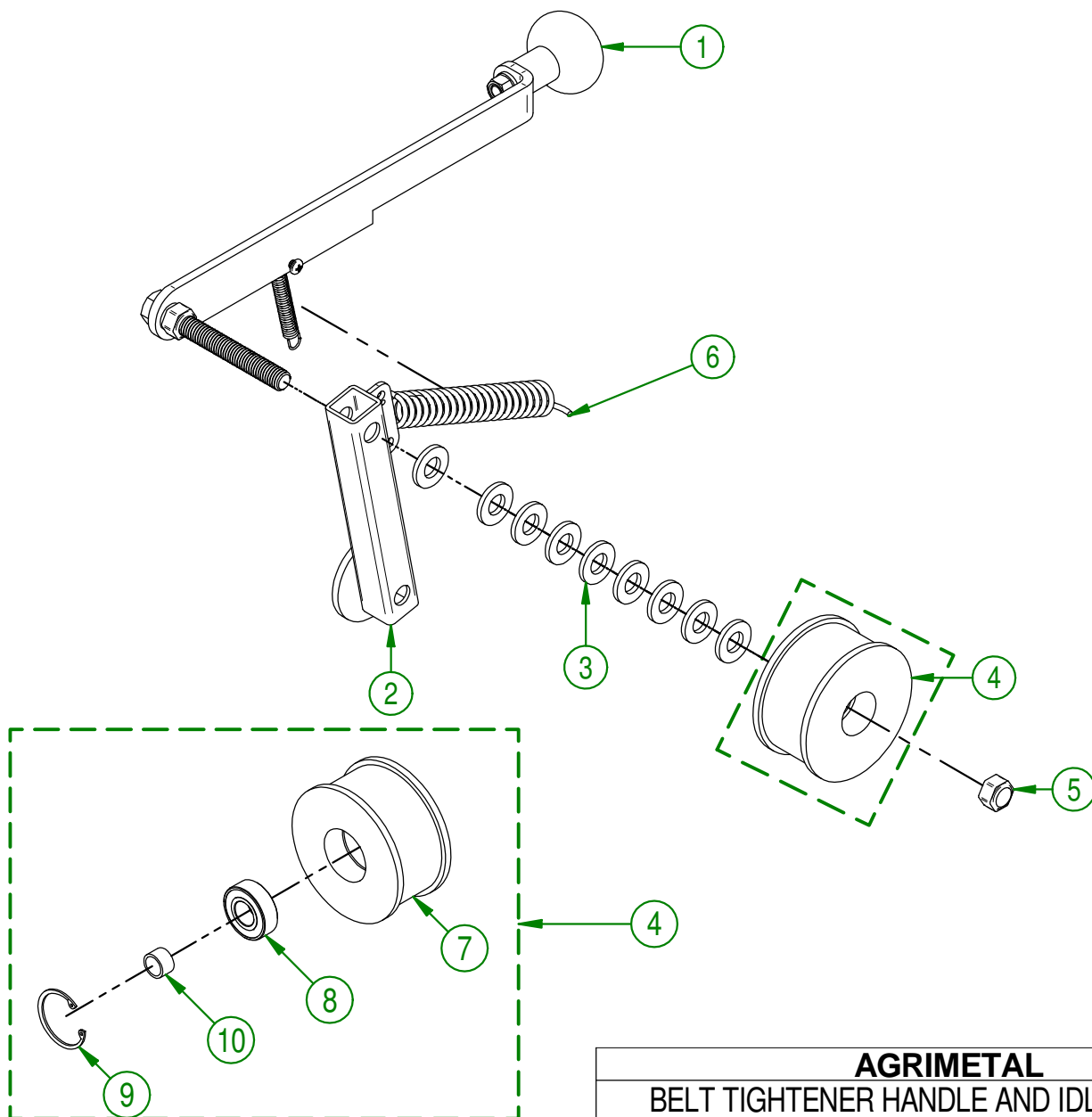
|                            |                                 |
|----------------------------|---------------------------------|
| <b>AGRIMETAL</b>           |                                 |
| <b>HITCH REINFORCEMENT</b> |                                 |
| CREATION : 06/12/16        | ASSEMBLY : <b>23-57-0100</b>    |
| REVISION : 24/01/18        | AUTHOR : J.KABWE   Page 9 de 38 |

23-57-0125

| # | PART #       | Qty | TITLE                            |
|---|--------------|-----|----------------------------------|
| 1 | 23-55-0065   | 1   | BELT TIGHTENER HANDLE ASSY.      |
| 2 | 23-50-0060   | 1   | BELT TIGHTENER                   |
| 3 | NC02-25-0011 | 9   | WASHER SAE ZINC 17/32 ID         |
| 4 | 23-55-0030   | 1   | IDLER PULLEY ASSY.               |
| 5 | NC01-96-0014 | 1   | NYLON-INSERT LOCKNUT ZINC 1/2-13 |
| 6 | NC13-85-0008 | 1   | GALVANISED SPRING                |

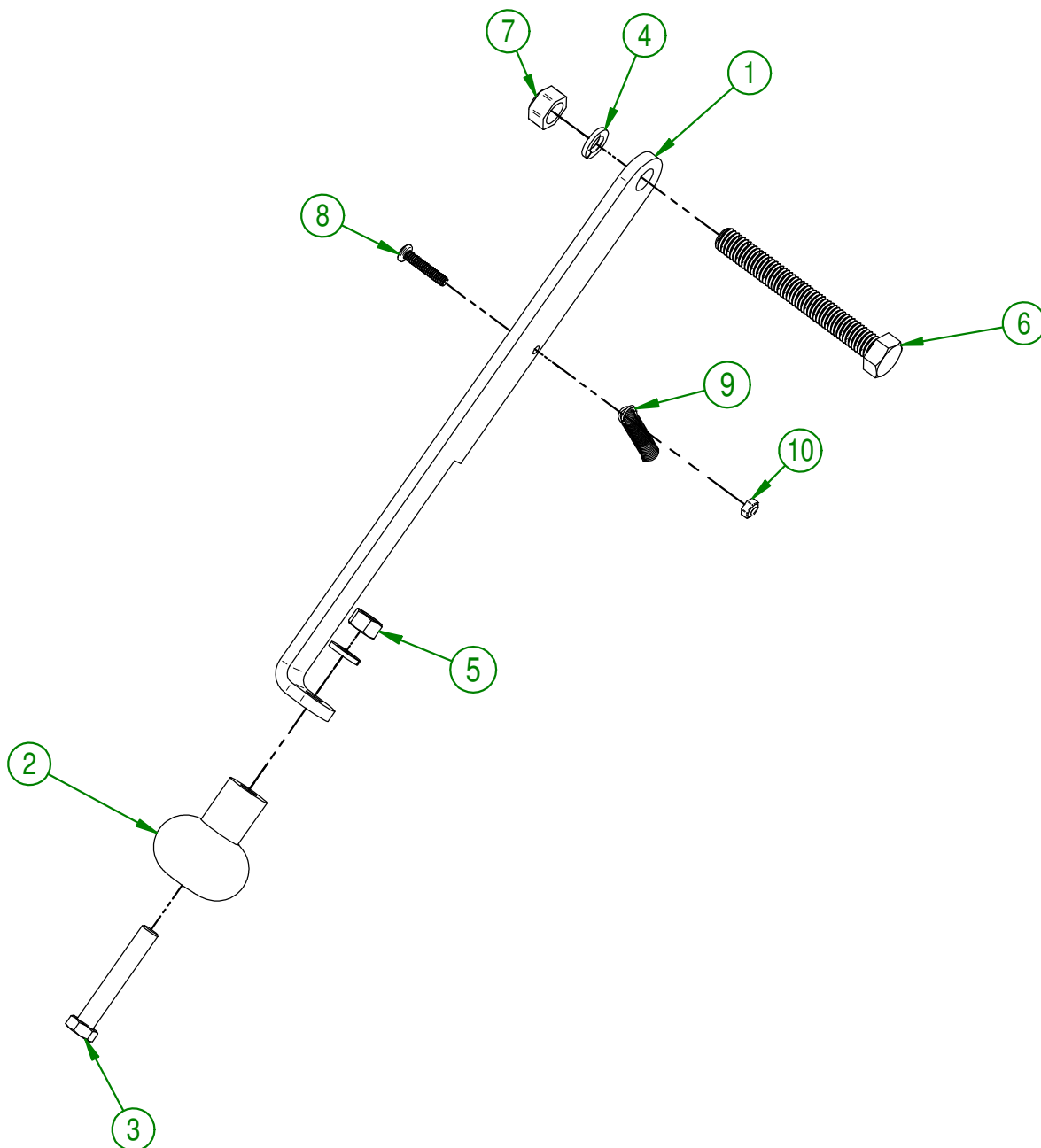
23-55-0030

| #  | PART #       | Qty | TITLE                               |
|----|--------------|-----|-------------------------------------|
| 7  | 23-21-0060   | 1   | IDLER PULLEY                        |
| 8  | NC14-75-0068 | 1   | BALL BEARING 99502H                 |
| 9  | NC01-64-0142 | 1   | SNAP RING HOLE 1 3/8"               |
| 10 | NC13-80-0061 | 1   | PAD STEEL POWDER 1/2" X 5/8" X 3/8" |



|  |                                  |
|--|----------------------------------|
| <b>AGRIMETAL</b>                             |                                  |
| <b>BELT TIGHTENER HANDLE AND IDLER ASSY.</b> |                                  |
| CREATION : 06/12/16                          | ASSEMBLY : <b>23-57-0125</b>     |
| REVISION : 26/10/18                          | AUTHOR : J.KABWE   Page 10 de 38 |

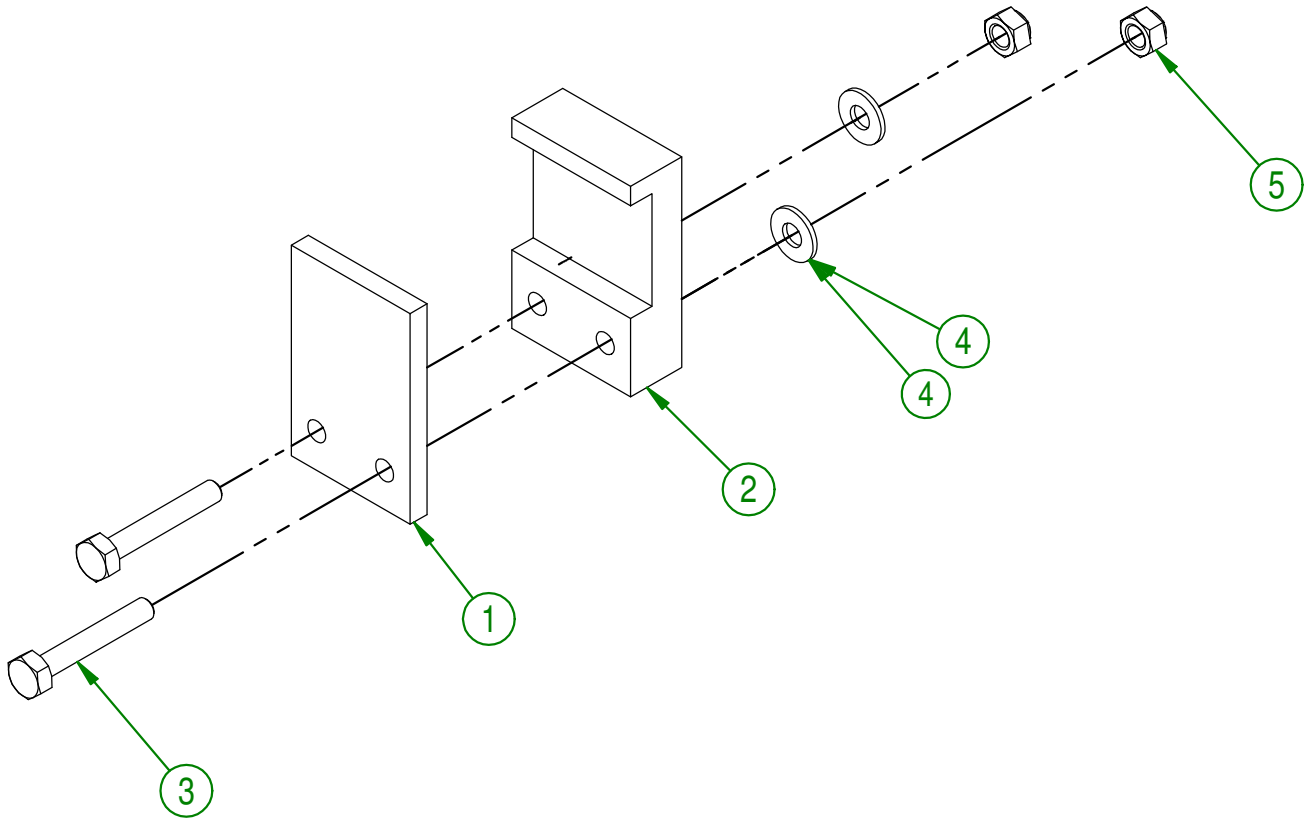
| #  | PART #       | Qty | TITLE  |
|----|--------------|-----|--|
| 1  | 23-04-0200   | 1   | BELT TIGHTENER HANDLE  |
| 2  | NC17-46-0018 | 1   | HANDLE KNOB  |
| 3  | NC01-17-0119 | 1   | HEX. BOLT GR2 ZINC 3/8-16 X 2 1/4"                             |
| 4  | NC02-32-0012 | 2   | LOCK WASHER ZINC 3/8"  |
| 5  | NC02-07-0018 | 1   | HEX. NUT ZINC 3/8-16   |
| 6  | NC01-15-0259 | 1   | HEX. BOLT GR2 ZINC 3/8-16 X 2 1/4"                             |
| 7  | NC01-96-0014 | 1   | NYLON-INSERT LOCKNUT ZINC 1/2-13                               |
| 8  | NC02-40-0083 | 1   | MÉCA.SCREW T. ROUND . SQUARE 10-24 X 1 OR 3/16 X 1             |
| 9  | NC13-85-0030 | 1   | OUTSIDE SPRING .043" WIRE X .375 OD X 2" LENGTH. 30 COIL TOTAL |
| 10 | NC01-96-0006 | 1   | NYLON NUT ZINC 10-24   |



|                                    |                                  |
|------------------------------------|----------------------------------|
| <b>AGRIMETAL</b>                   |                                  |
| <b>BELT TIGHTENER HANDLE ASSY.</b> |                                  |
| CREATION : 06/12/16                | ASSEMBLY : <b>23-55-0065</b>     |
| REVISION : 26/10/18                | AUTHOR : J.KABWE   Page 11 de 38 |

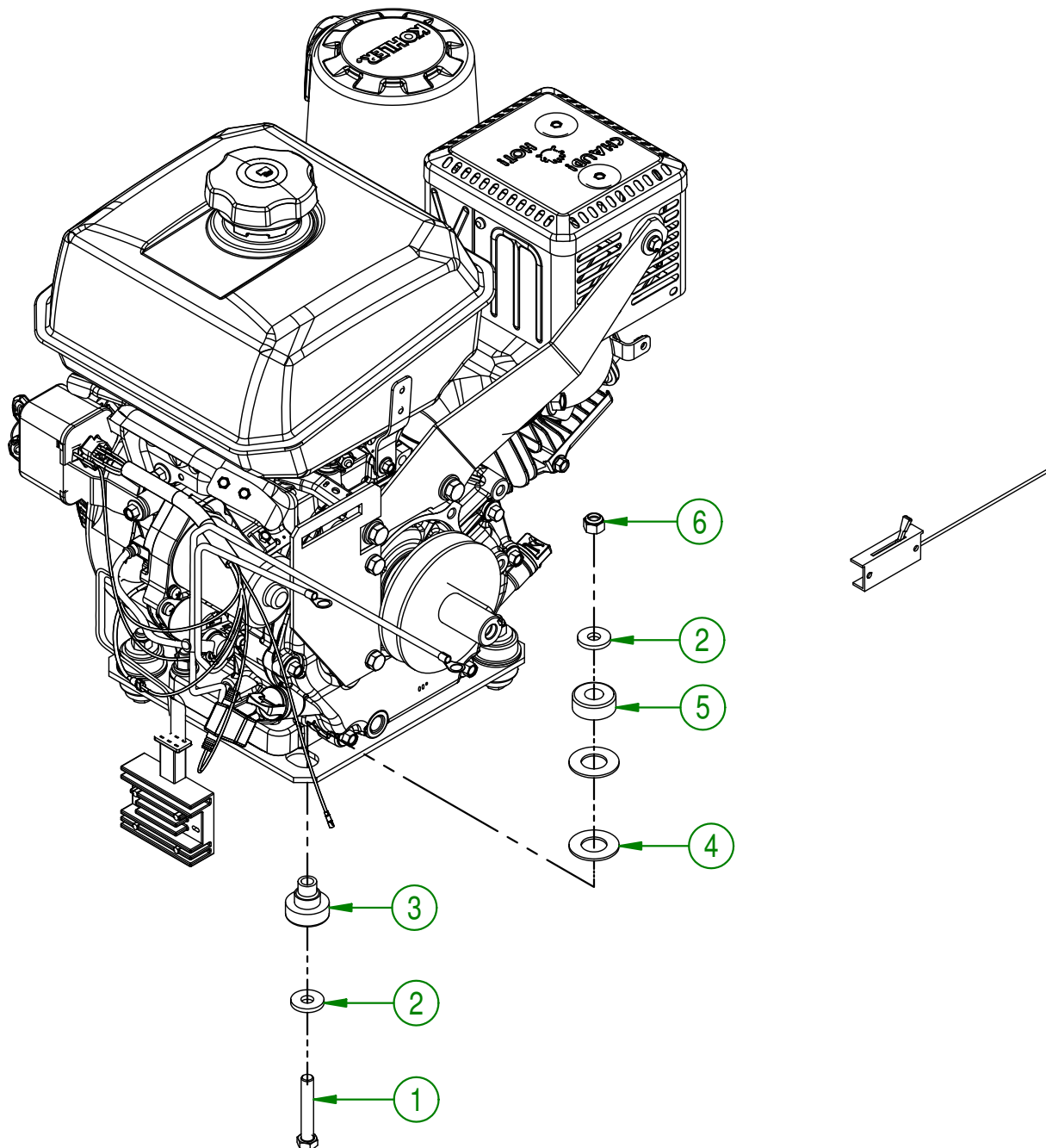
23-57-0135

| # | PART #       | Qty | TITLE                              |
|---|--------------|-----|------------------------------------|
| 1 | 23-42-0110   | 1   | BELT TENDER HANDLE COUVER          |
| 2 | 23-42-0115   | 1   | BELT TENDER HANDLE GUIDE           |
| 3 | NC01-17-0008 | 2   | HEX. BOLT GR2 ZINC 1/4-20 X 1 1/2" |
| 4 | NC02-25-0007 | 2   | WASHER ZINC 0.281 = 9/32           |
| 5 | NC01-96-0009 | 2   | NYLON-INSERT LOCKNUT ZINC 1/4-20   |



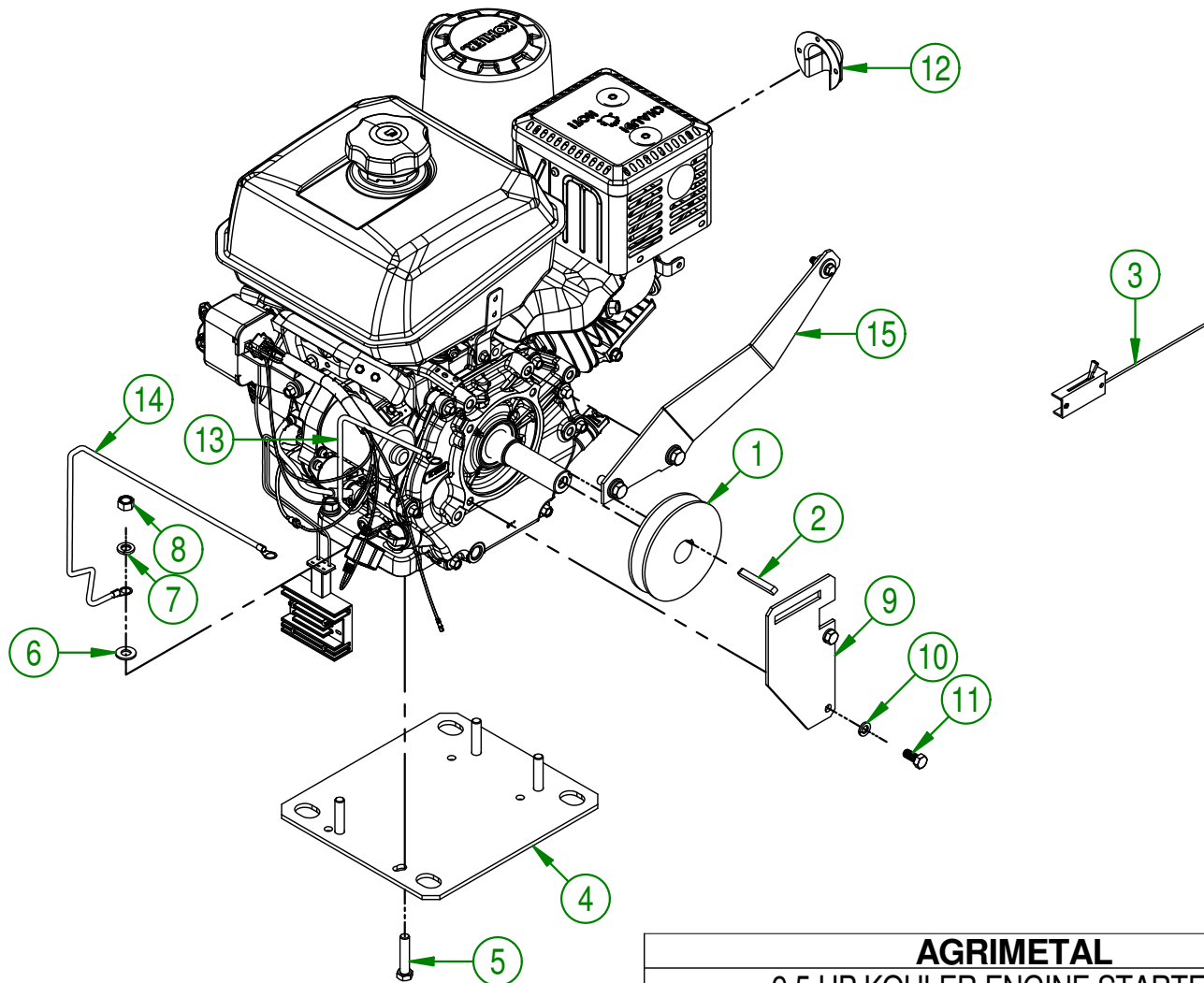
|   |                                  |
|---|----------------------------------|
| <b>AGRIMETAL</b>                        |                                  |
| <b>BELT TIGHTENER HANDLE GUIDE ASSY</b> |                                  |
| CREATION : 06/12/16                     | ASSEMBLY : <b>23-57-0135</b>     |
| REVISION : 10/01/18                     | AUTHOR : J.KABWE   Page 12 de 38 |

| # | PART #       | Qty | TITLE                                |
|---|--------------|-----|--------------------------------------|
| 1 | NC01-17-0119 | 4   | HEX. BOLT GR2 ZINC 3/8-16 X 2 1/4"   |
| 2 | 21-01-0950   | 8   | FLAT WASHER 10GA 1.005" DIA X 25/64" |
| 3 | NC13-15-0059 | 4   | YELLOW RUBBER BASE MOUNT             |
| 4 | 26-03-4800   | 8   | WASHER                               |
| 5 | NC13-15-0059 | 4   | YELLOW RUBBER BASE MOUNT             |
| 6 | NC01-96-0011 | 4   | NYLON NUT 3/8-16                     |



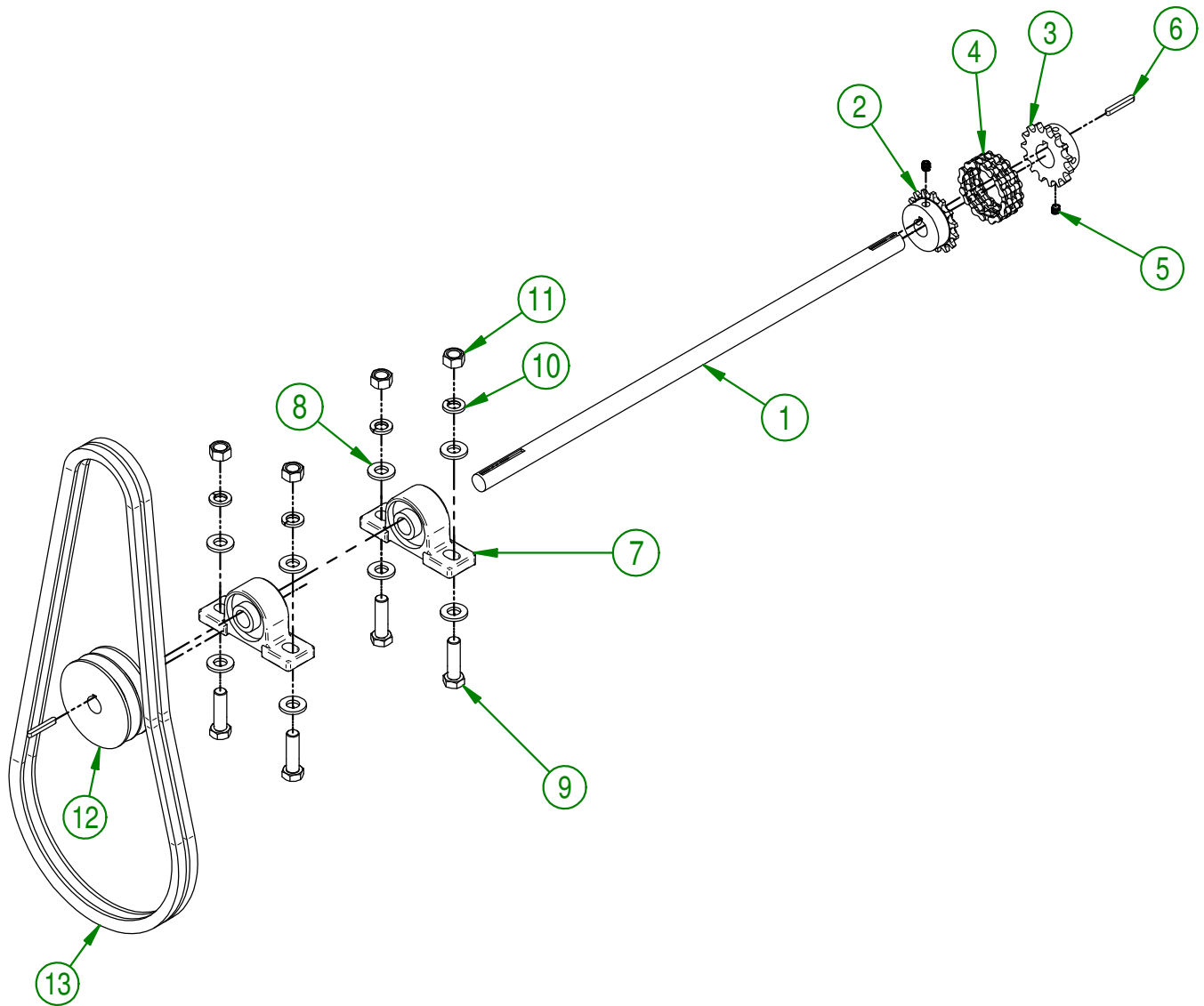
|                                   |                                  |
|-----------------------------------|----------------------------------|
| <b>AGRIMETAL</b>                  |                                  |
| <b>9.5 HP KOHLER ENGINE GROUP</b> |                                  |
| CREATION : 07/09/17               | ASSEMBLY : <b>23-57-1060</b>     |
| REVISION : 30/08/19               | AUTHOR : J.KABWE   Page 13 de 38 |

| #  | PART #       | Qty | TITLE  |
|----|--------------|-----|--|
| 1  | 23-39-0060   | 1   | MB40 X Ø1" PULLEY X KW 1/4" 2SS 5/16"-18 TL            |
| 2  | 01-41-0920   | 1   | 1/4" X 1/4" X 2" TL KEY                                |
| 3  | NC13-37-0581 | 1   | 41" SHEATH THROTTLE CONTROL                            |
| 4  | 23-04-0110   | 1   | ENGINE BASE  |
| 5  | NC01-17-0117 | 4   | HEX. BOLT GR2 ZINC 3/8-16 X 1 3/4"                     |
| 6  | 01-01-2485   | 4   | FLAT WASHER 14 GA X 13/16"OD X 25/64" ID               |
| 7  | NC02-32-0012 | 4   | LOCK WASHER ZINC 3/8"                                  |
| 8  | NC02-07-0018 | 4   | HEX. NUT ZINC 3/8-16                                   |
| 9  | 23-01-1060   | 1   | BELT TENDER SUPPORT                                    |
| 10 | NC02-32-0011 | 2   | LOCK WASHER ZINC 5/16"                                 |
| 11 | NC01-21-0058 | 2   | HEX. BOLT GR2 NF ZINS 5/16-24 X 3/4                    |
| 12 | NC13-37-0635 | 1   | PCE KOELLER 12755106 KIT DEFLECTOR FOR 9 1/2 HP KOHLER |
| 13 | 23-55-1031   | 1   | 13" BATTERY CABLE ASSY. (POSITIVE)                     |
| 14 | 23-55-1036   | 1   | 23" BATTERY CABLE ASSY. (NEGATIVE)                     |
| 15 | 26-57-0035   | 1   | 9.5 HP KOHLER MUFFLER SUPPPORT (BWT 140) GROUP         |



|                                     |                                  |
|-------------------------------------|----------------------------------|
| <b>AGRIMETAL</b>                    |                                  |
| <b>9.5 HP KOHLER ENGINE STARTER</b> |                                  |
| CREATION : 07/09/17                 | ASSEMBLY : <b>23-55-1020</b>     |
| REVISION : 30/08/19                 | AUTHOR : J.KABWE   Page 14 de 38 |

| #  | PART #       | Qty | TITLE   |
|----|--------------|-----|---|
| 1  | 23-13-1025   | 1   | DRIVE SHAFT                                       |
| 2  | NC14-55-0169 | 1   | COUPLING SPROCKET 4016 X 3/4"Ø KW 3/16 2SS5/16-18 |
| 3  | NC14-55-0154 | 1   | COUPLING SPROCKET 4016 X 1"Ø KW1/4 2SS5/16-18     |
| 4  | NC14-20-0030 | 1   | CHAIN 4016  |
| 5  | NC02-44-0103 | 2   | SET SCREW 5/16-18 X 3/8"                          |
| 6  | NC01-65-0096 | 2   | ROUND END KEY 3/16 X 3/16 XI 1/2"                 |
| 7  | NC14-75-0031 | 2   | PILLOW BLOCKS UCP204-12 3/4" Ø (CNINE)            |
| 8  | NC02-25-0011 | 8   | WASHER SAE ZINC 17/32 ID                          |
| 9  | NC01-17-0250 | 4   | HEX. BOLT GR2 ZINC 1/2-13 X 1 3/4"                |
| 10 | NC02-32-0014 | 4   | LOCK WASHER ZINC 1/2"                             |
| 11 | NC02-07-0020 | 4   | HEX. NUT ZINC 1/2-13                              |
| 12 | 23-39-0120   | 1   | PULLEY 2MA-40 DIA. 3/4"                           |
| 13 | NC14-25-1529 | 2   | V BELT 1/2 COGDED RAW EDGE AX-51 GATES            |

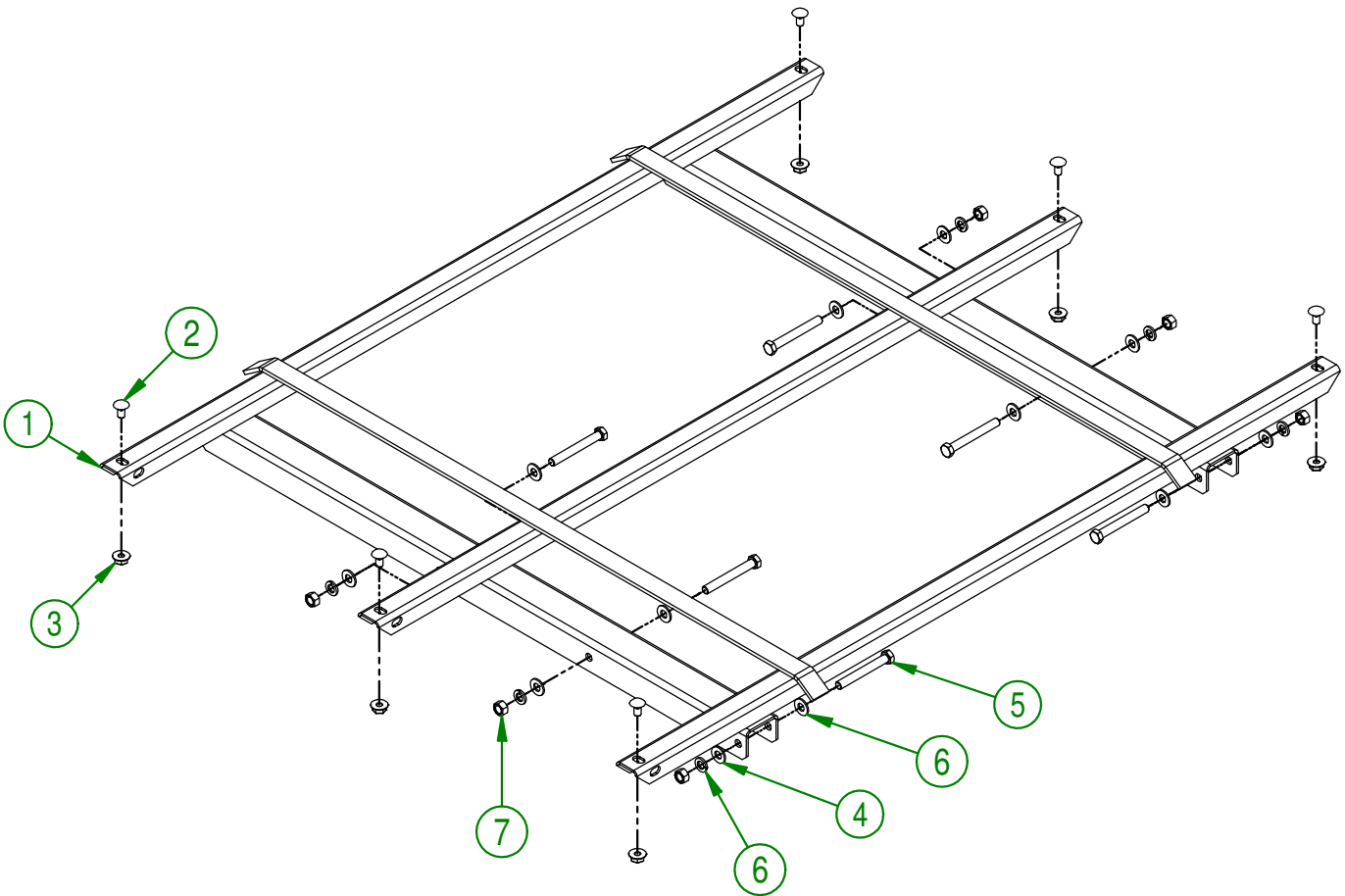


|                         |                                  |
|-------------------------|----------------------------------|
| <b>AGRIMETAL</b>        |                                  |
| <b>DRIVE SHAFT ASSY</b> |                                  |
| CREATION : 06/12/16     | ASSEMBLY : <b>23-57-1065</b>     |
| REVISION : 10/10/18     | AUTHOR : J.KABWE   Page 15 de 38 |



23-57-0175

| # | PART #       | Qty | TITLE                                       |
|---|--------------|-----|---|
| 1 | 23-50-0025   | 1   | FRAME                                       |
| 2 | NC01-04-0055 | 6   | CARR. BOLT GR2 ZINC 5/16-18 X 5/8"          |
| 3 | NC02-14-0006 | 6   | HEX. NUT SPECIAL FLANGET NC 5/16-18 B GRADE |
| 4 | 01-01-2485   | 12  | FLAT WASHER                                 |
| 5 | NC01-17-0122 | 6   | HEX. BOLT GR2 ZINC 3/8-16 X 3"              |
| 6 | NC02-32-0012 | 6   | LOCK WASHER ZINC 3/8"                       |
| 7 | NC02-07-0018 | 6   | HEX. NUT ZINC 3/8-16                        |

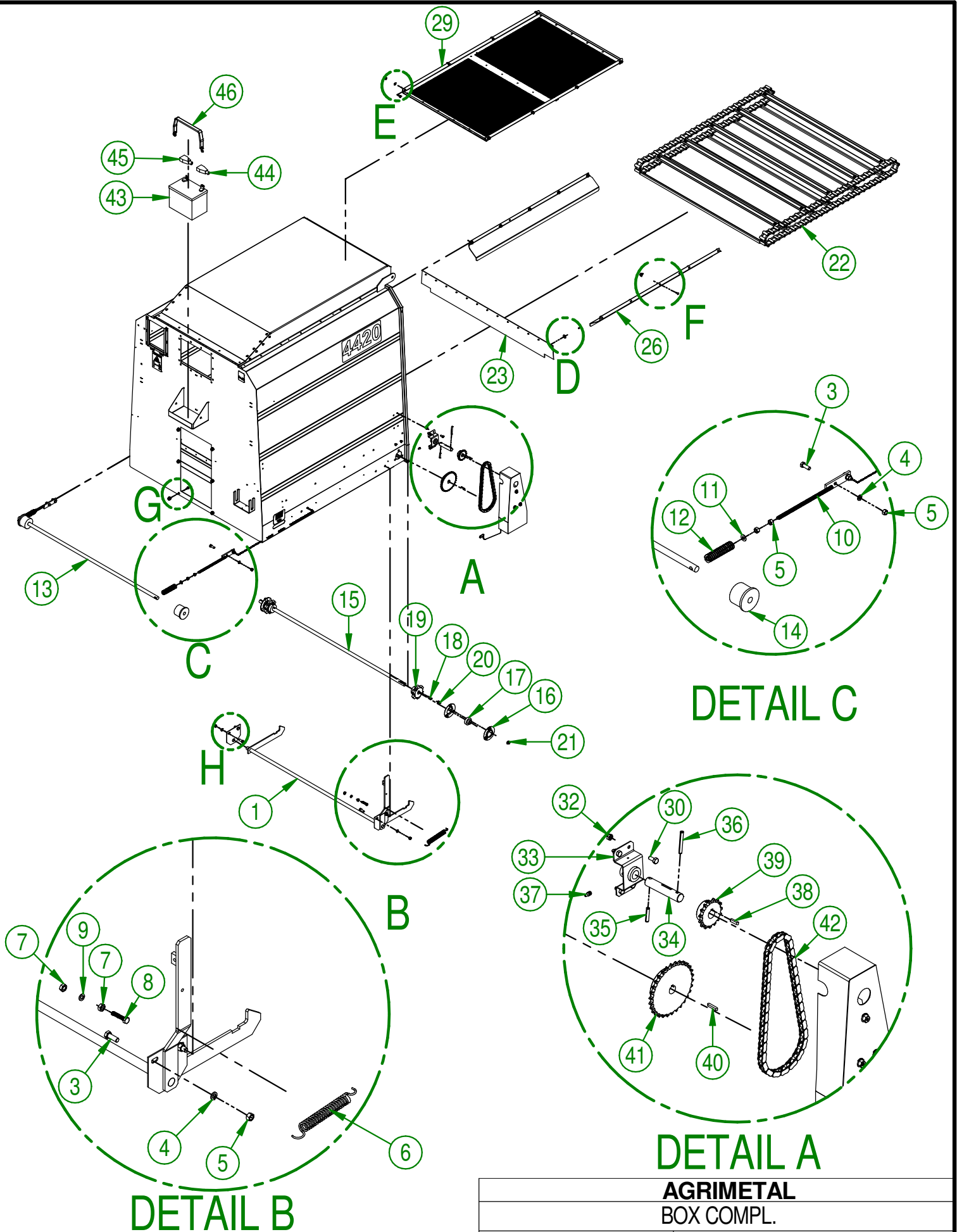


**AGRIMETAL**  
FRAME GROUP.

CREATION : 06/12/16  
REVISION : 01/02/18

ASSEMBLY : **23-57-0175**

AUTHOR : J.KABWE | Page 16 de 38



|                     |                              |
|---------------------|------------------------------|
| <b>AGRIMETAL</b>    |                              |
| <b>BOX COMPL.</b>   |                              |
| CREATION : 12/09/17 | ASSEMBLY : <b>23-57-1000</b> |
| REVISION : 14/09/21 | AUTHOR : J.KABWE             |

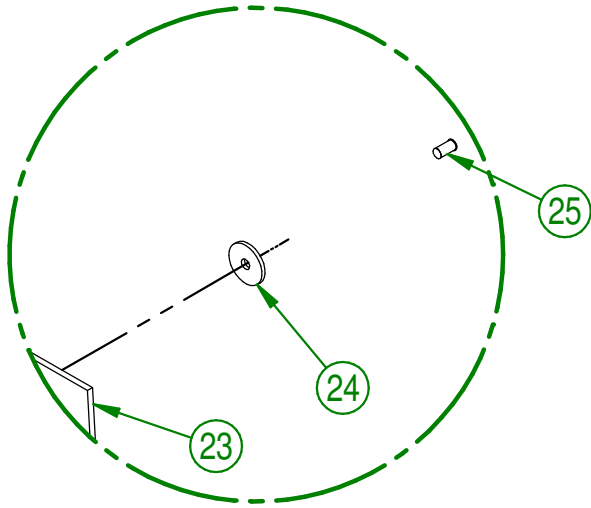
| #  | PART #       | Qty | TITLE   |
|----|--------------|-----|---|
| 1  | 23-50-1055   | 1   | DOOR LATCH  |
| 2  | 23-01-7610   | 1   | DOOR PIVOT STOPER                                       |
| 3  | NC01-17-0114 | 8   | HEX. BOLT GR2 ZINC 3/8-16 X 1"                          |
| 4  | NC02-32-0012 | 8   | LOCK WASHER ZINC 3/8"                                   |
| 5  | NC02-07-0018 | 12  | HEX. NUT ZINC 3/8-16                                    |
| 6  | NC13-85-0008 | 1   | GALVANISED SPRING                                       |
| 7  | NC02-07-0017 | 2   | HEX. NUT 5/16-18  |
| 8  | NC01-17-0062 | 1   | HEX. BOLT GR2 ZINC 5/16-18 X 1 1/2" TOTAL LENGTH        |
| 9  | NC02-32-0011 | 1   | LOCK WASHER ZINC 5/16"                                  |
| 10 | 23-50-0080   | 2   | CONVEYOR CHAIN TIGHTNER                                 |
| 11 | 01-01-2485   | 2   | FLAT WASHER 14 GA X 13/16"OD X 25/64" ID                |
| 12 | NC13-86-0050 | 2   | SPRING 1/2" ID X 1" OD X 4" LG                          |
| 13 | 23-13-1005   | 1   | IDLER SHAFT   |
| 14 | 23-42-0105   | 2   | PLASTIC IDLER ROLLER                                    |
| 15 | 23-13-1035   | 1   | CONVEYOR DRIVE SHAFT                                    |
| 16 | NC14-75-0008 | 4   | STEEL BEARING ONLY 3 HOLES F4 3 9/16" OD                |
| 17 | NC14-75-0014 | 2   | STEEL BEARING SB 204-12 X 3/4" ID                       |
| 18 | 01-41-0910   | 2   | KEY   |
| 19 | 23-43-0000   | 2   | CAST IRON PINION 62 B HOLE 3/4 KW 1/4 2 SS              |
| 20 | NC01-04-0055 | 6   | CARR. BOLT GR2 ZINC 5/16-18 X 5/8"                      |
| 21 | NC02-14-0006 | 6   | HEX. NUT SPECIAL FLANGET NC 5/16-18 B GRADE             |
| 22 | 23-55-0010   | 1   | CHAIN #62 AND U PADDLE ASSY.                            |
| 23 | NC13-15-0065 | 1   | BLACK RUBBER SN60 1/8" X 4 3/4" X 43 7/8" TL            |
| 24 | 16-01-2720   | 13  | WASHER 13/16" DIA. X 13/64"                             |
| 25 | NC01-78-0016 | 13  | ALUMINIUM BLIND POP RIVET STEEL MANDREL 0.187 X 0.690   |
| 26 | 23-01-2645   | 2   | CONVEYOR DEFLECTOR                                      |
| 27 | NC01-04-0001 | 16  | CARR. BOLT GR2 ZINC 1/4-20 X 1/2"                       |
| 28 | NC02-14-0017 | 16  | FLANGED NUT GR. B 1/4-20                                |
| 29 | 23-55-0025   | 1   | EXHAUST SCREEN ( 1/4")                                  |
| 30 | NC01-17-0003 | 12  | HEX. BOLT GR2 ZINC 1/4-20 X 5/8"                        |
| 31 | NC02-25-0007 | 8   | WASHER ZINC 0.281 = 9/32                                |
| 32 | NC01-96-0009 | 12  | NYLON-INSERT LOCKNUT ZINC 1/4-20                        |
| 33 | 23-50-1040   | 1   | CRANK SHAFT SUPPORT                                     |
| 34 | 23-13-1030   | 1   | CRANK SHAFT   |
| 35 | NC01-69-0459 | 1   | ZINC SPRING PIN TENDER DIA. 1/4" X 1 1/4"               |
| 36 | NC01-69-0465 | 1   | ZINC SPRING PIN TENDER DIA. 1/4" X 2" TL                |
| 37 | NC01-69-0785 | 1   | STRAIGHT GREASE FITTING 1/4-28                          |
| 38 | NC01-65-0094 | 1   | ROUND END KEY 3/16" X 3/16" X 7/8" TL                   |
| 39 | NC14-55-0234 | 1   | SPROCKET 40B15H X 3/4" KW 3/16", 2SS 5/16-18            |
| 40 | NC01-65-0089 | 1   | ROUND END KEY 3/16" X 3/16" X 1 1/16" TL                |
| 41 | NC14-55-0235 | 1   | SPROCKET 40B30H X DIA. 3/4", KW 3/16". 2SS 5/16-18      |
| 42 | 23-37-1005   | 1   | CHAIN # 40 X 30 3/4" TL + MANUAL DECK CONVEYOR 1/2 MESH |
| 43 | NC13-12-0001 | 1   | 12 VOLTS BATTERY  |
| 44 | NC13-80-0267 | 1   | RED PROTECTOR FOR BATTERY POST                          |

**AGRIMETAL  
BOX COMPL.**

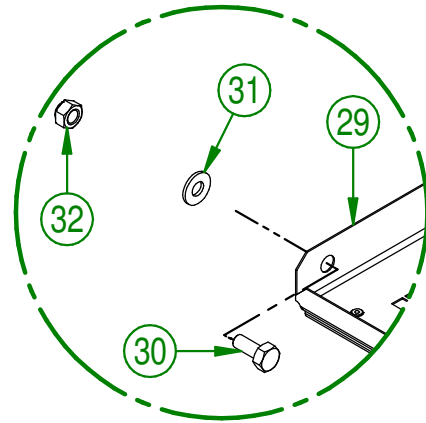
CREATION : 12/09/17  
REVISION : 14/09/21

ASSEMBLY : **23-57-1000**  
AUTHOR : J.KABWE

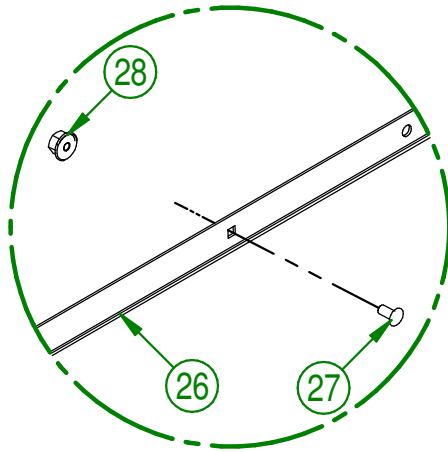
| #  | PART #       | Qty | TITLE                            |
|----|--------------|-----|----------------------------------|
| 45 | NCI3-80-0268 | 1   | BLACK PROTECTOR FOR BATTERY POST |
| 46 | NCI3-15-0008 | 1   | RUBBER STRAP                     |



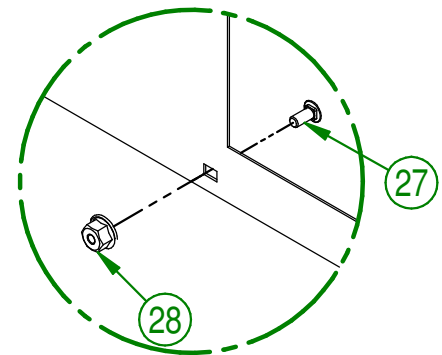
DETAIL D



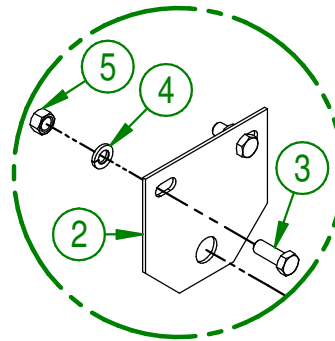
DETAIL E



DETAIL F



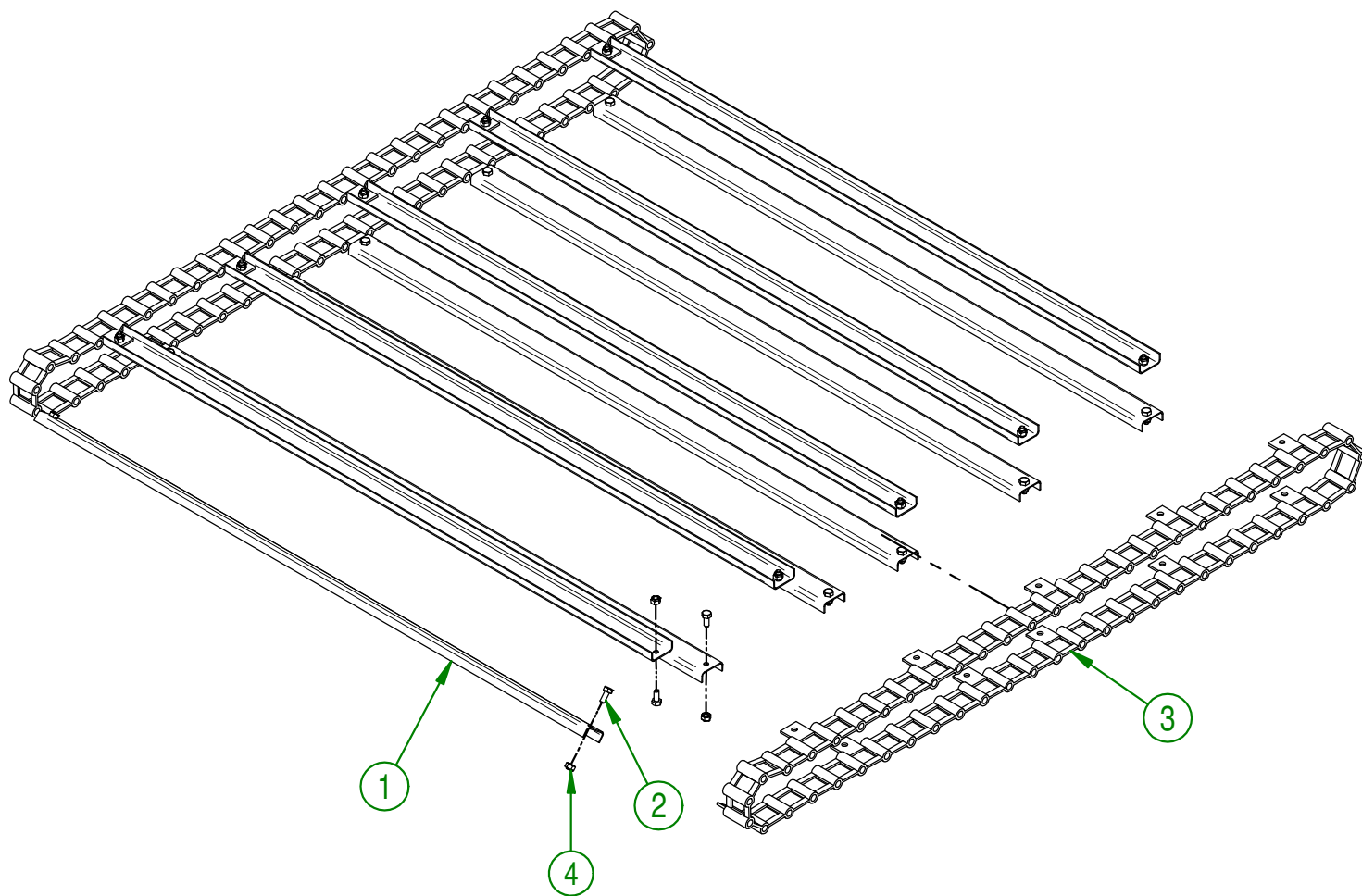
DETAIL G



DETAIL H

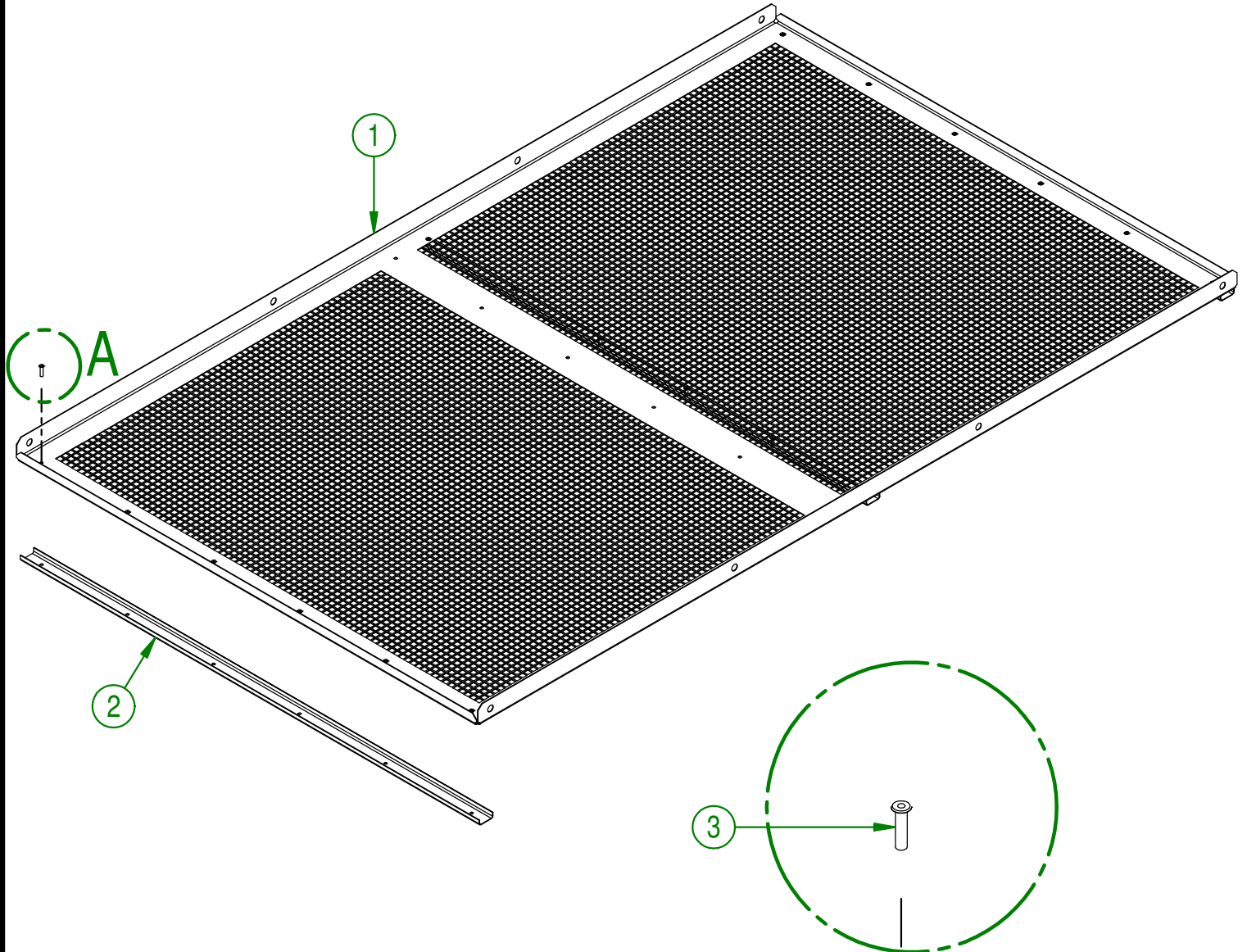
|                     |                              |
|---------------------|------------------------------|
| <b>AGRIMETAL</b>    |                              |
| BOX COMPL.          |                              |
| CREATION : 12/09/17 | ASSEMBLY : <b>23-57-1000</b> |
| REVISION : 14/09/21 | AUTHOR : J.KABWE             |

| # | PART #       | Qty | TITLE                            |
|---|--------------|-----|----------------------------------|
| 1 | 23-01-3320   | 11  | CONVEYOR PADDLE                  |
| 2 | NC01-37-0003 | 22  | HEX. BOLT GR8 1/4-28 X 5/8"      |
| 3 | 23-37-0190   | 1   | CHAIN # 62 (53 LINK ) (PAIR)     |
| 4 | NC01-97-0004 | 22  | NYLON-INSERT LOCKNUT ZINC 1/4-28 |



|                                     |                                  |
|-------------------------------------|----------------------------------|
| <b>AGRIMETAL</b>                    |                                  |
| <b>CHAIN #62 AND U PADDLE ASSY.</b> |                                  |
| CREATION : 07/12/16                 | ASSEMBLY : <b>23-55-0010</b>     |
| REVISION : 10/01/18                 | AUTHOR : J.KABWE   Page 20 de 38 |

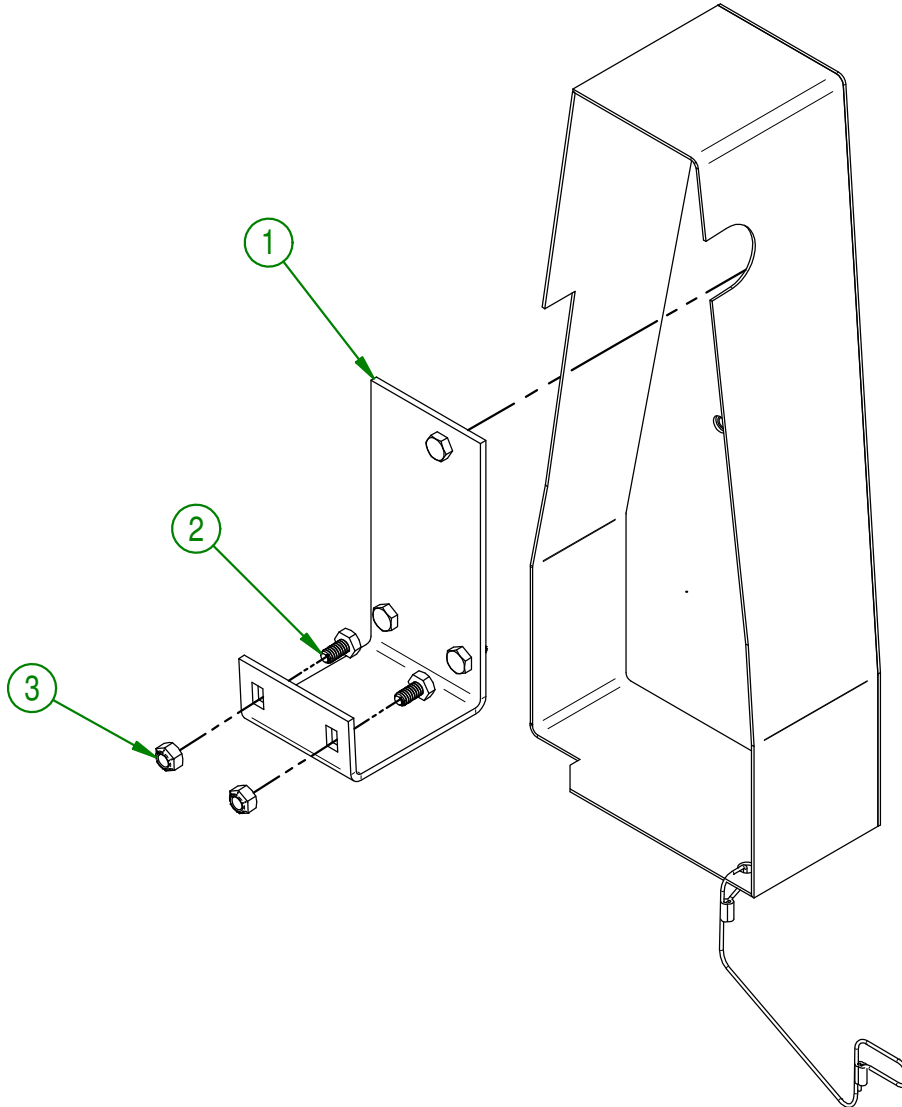
| # | PART #       | Qty | TITLE   |
|---|--------------|-----|---|
| 1 | 23-03-1830   | 1   | EXHAUST   |
| 2 | 23-03-1835   | 3   | EXHAUST REINFORCING                                   |
| 3 | NC01-78-0055 | 18  | ALUMINIUM BLIND POP RIVET STEEL MANDREL 0.125 X 0.515 |



**DETAIL A**

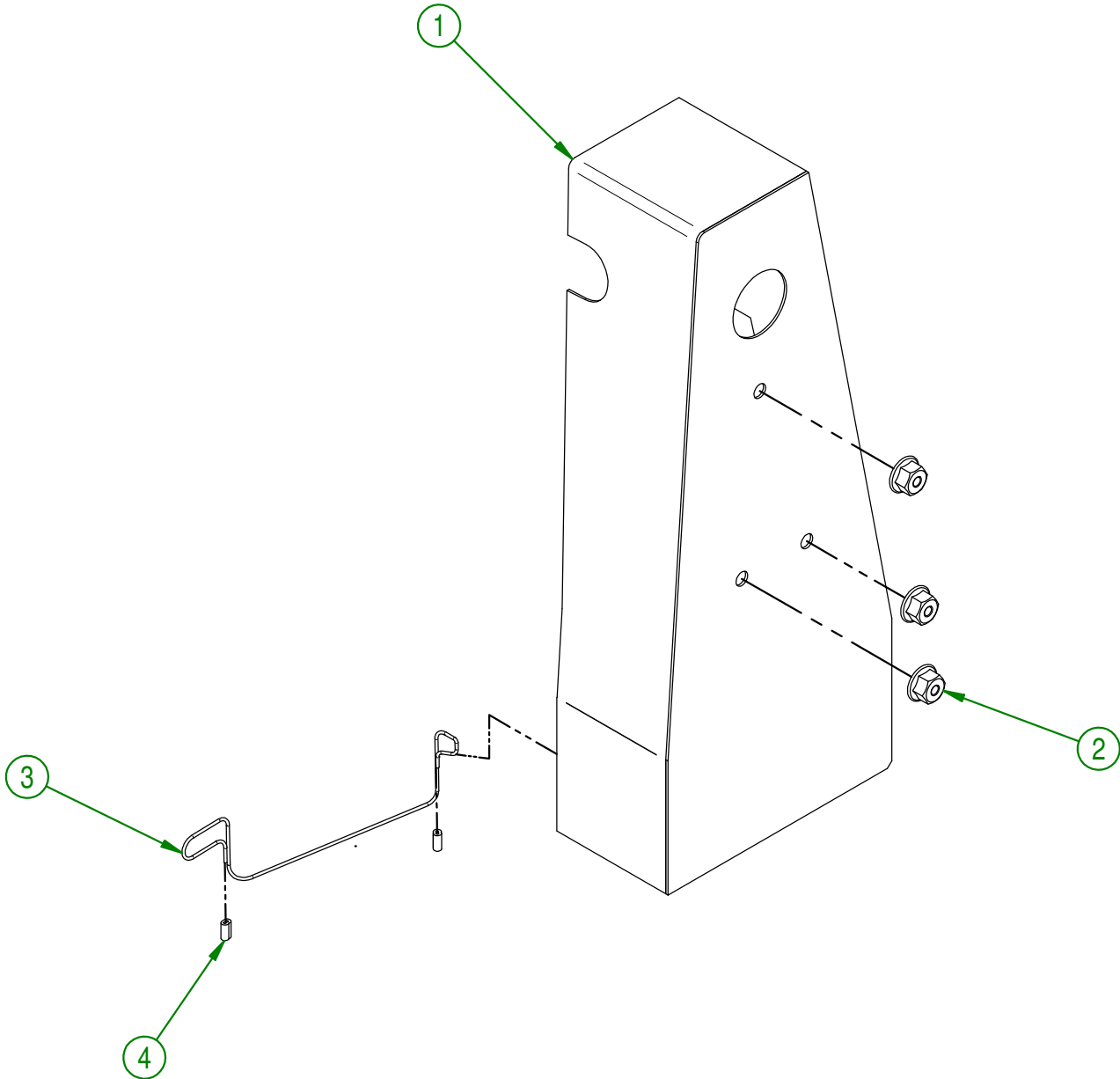
|                         |                                  |
|-------------------------|----------------------------------|
| <b>AGRIMETAL</b>        |                                  |
| EXHAUST SCREEN ( 1/4" ) |                                  |
| CREATION : 04/08/17     | ASSEMBLY : <b>23-55-0025</b>     |
| REVISION : 10/01/18     | AUTHOR : J.KABWE   Page 21 de 38 |

| # | PART #       | Qty | TITLE                               |
|---|--------------|-----|-------------------------------------|
| 1 | 23-50-1045   | 1   | MANUAL CONVEYOR CHAIN GUARD SUPPORT |
| 2 | NC01-17-0002 | 2   | HEX. BOLT GR2 ZINC 1/4-20 X 1/2"    |
| 3 | NC01-96-0009 | 2   | NYLON-INSERT LOCKNUT ZINC 1/4-20    |



|  |                                  |
|--|----------------------------------|
| <b>AGRIMETAL</b>                                   |                                  |
| <b>CRANK CONVEYOR CHAIN GUARD AND SUPPORT ASSY</b> |                                  |
| CREATION : 08/12/16                                | ASSEMBLY : <b>23-57-1085</b>     |
| REVISION : 26/10/18                                | AUTHOR : J.KABWE   Page 22 de 38 |

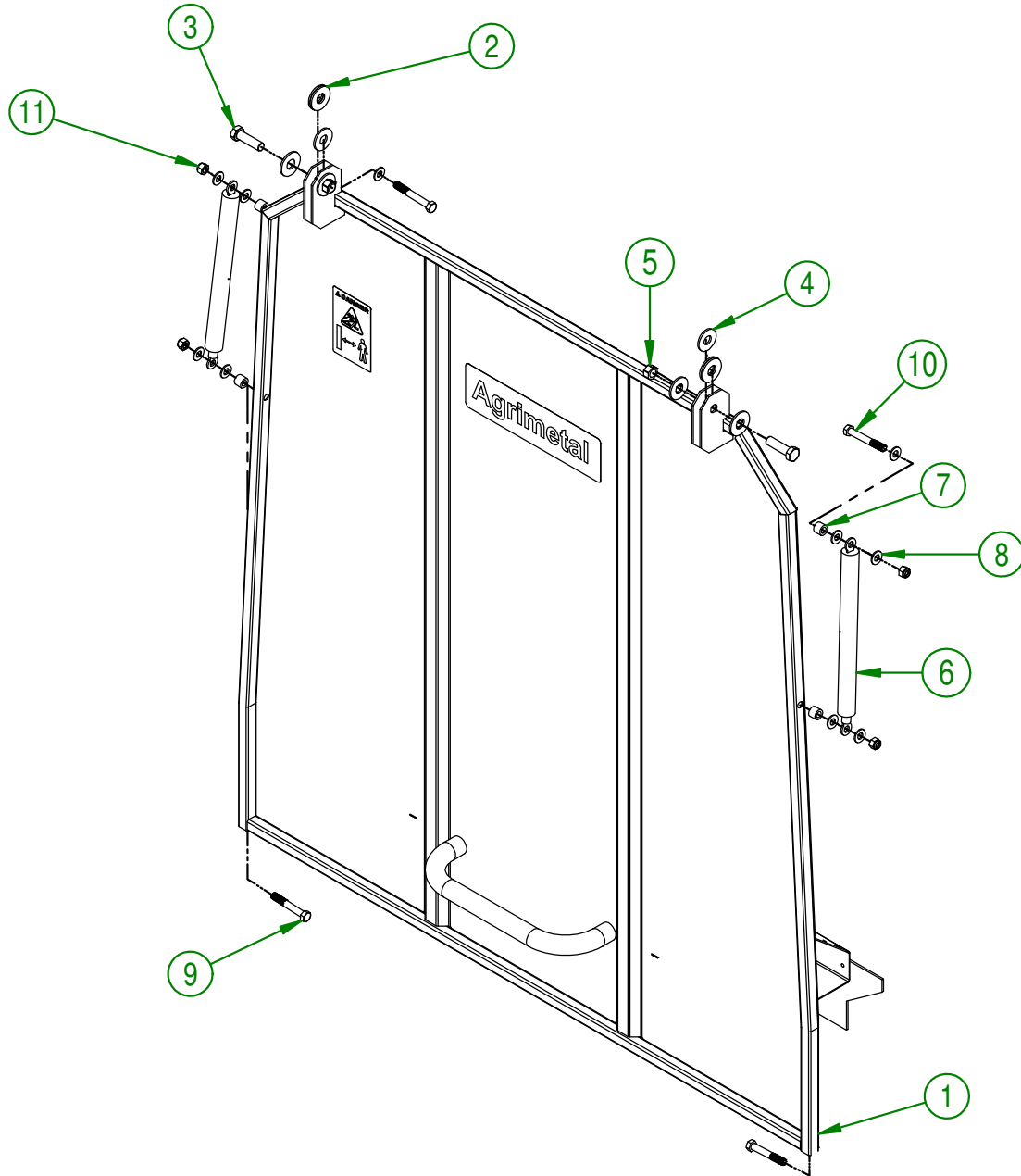
| # | PART #       | Qty | TITLE  |
|---|--------------|-----|--|
| 1 | 23-50-1080   | 1   | MANUAL CONVEYOR CHAIN GUARD                        |
| 2 | NC02-14-0017 | 3   | FLANGED NUT GR. B 1/4-20                           |
| 3 | 23-41-0137   | 1   | STEEL WIRE CONVEYOR PROTECTION DIA. 1/16" X 15" TL |
| 4 | NC01-64-0005 | 2   | OVAL SLEEVE (ALUMINUM)                             |



|  |                                  |
|--|----------------------------------|
| <b>AGRIMETAL</b>                         |                                  |
| <b>MANUAL CONVEYOR CHAIN GUARD ASSY.</b> |                                  |
| CREATION : 08/12/16                      | ASSEMBLY : <b>23-57-1090</b>     |
| REVISION : 10/01/18                      | AUTHOR : J.KABWE   Page 23 de 38 |

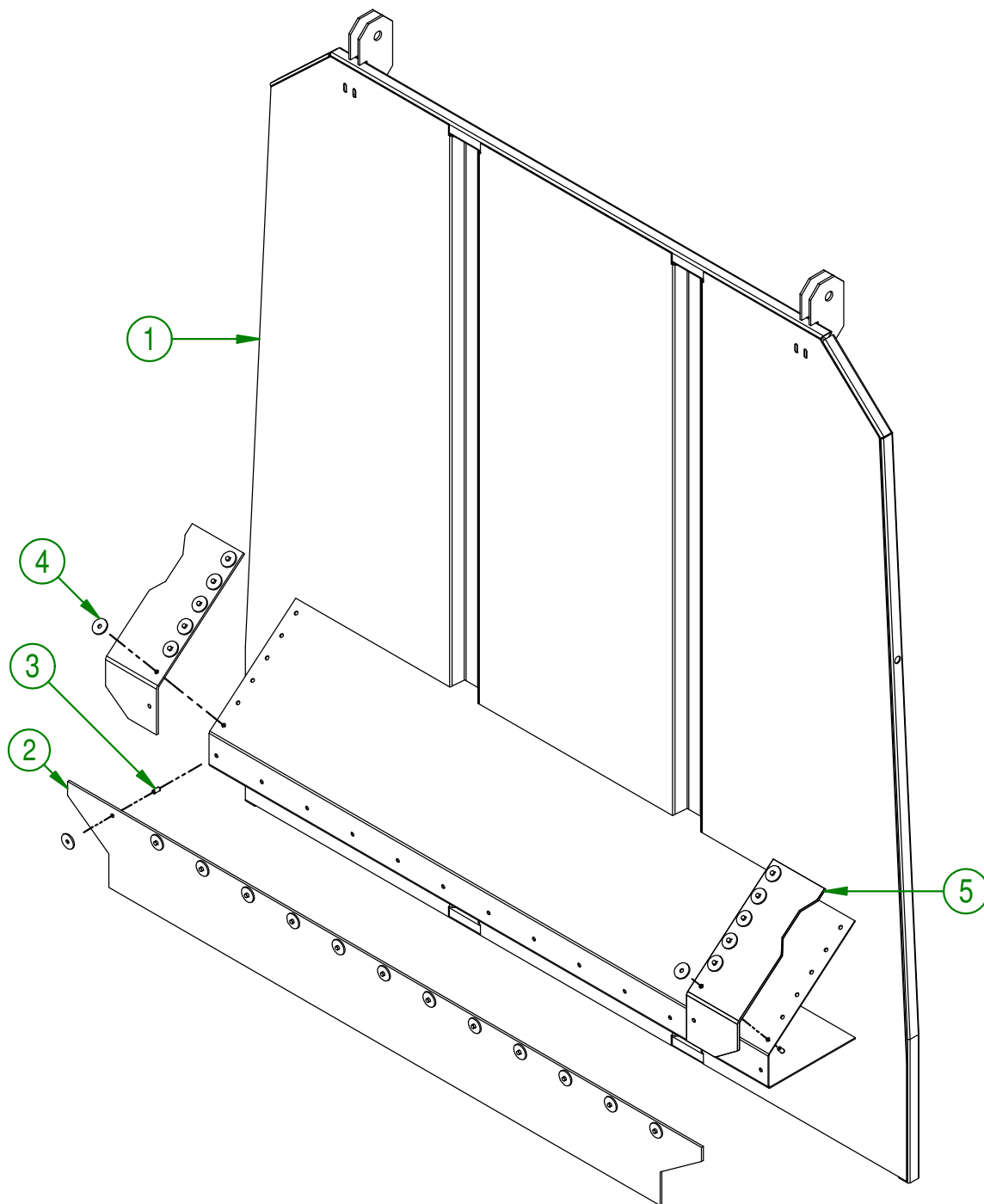


| #  | PART #       | Qty | TITLE                               |
|----|--------------|-----|-------------------------------------|
| 1  | 23-55-1090   | 1   | BACK DOOR PRE ASS.                  |
| 2  | NC02-22-0013 | 6   | WASHER ZINC 5/8 ID X 1 1/2 OD       |
| 3  | NC01-17-0250 | 2   | HEX. BOLT GR2 ZINC 1/2-13 X 1 3/4"  |
| 4  | NC02-25-0011 | 4   | WASHER SAE ZINC 17/32"              |
| 5  | NC01-96-0014 | 2   | NYLON-INSERT LOCKNUT ZINC 1/2-13    |
| 6  | 23-55-1110   | 2   | GAS CYLINDER                        |
| 7  | 01-09-0000   | 4   | BEARING RACE (UCFL205-16)           |
| 8  | 01-01-2485   | 10  | FLAT WASHER                         |
| 9  | NC01-17-0120 | 2   | HEX.BOLT GR2 NC ZINC 3/8-16 X 2 1/2 |
| 10 | NC01-17-0121 | 2   | HEX. BOLT GR2 ZINC 3/8-16 X 2 1/2"  |
| 11 | NC01-96-0011 | 4   | NYLON NUT 3/8-16                    |



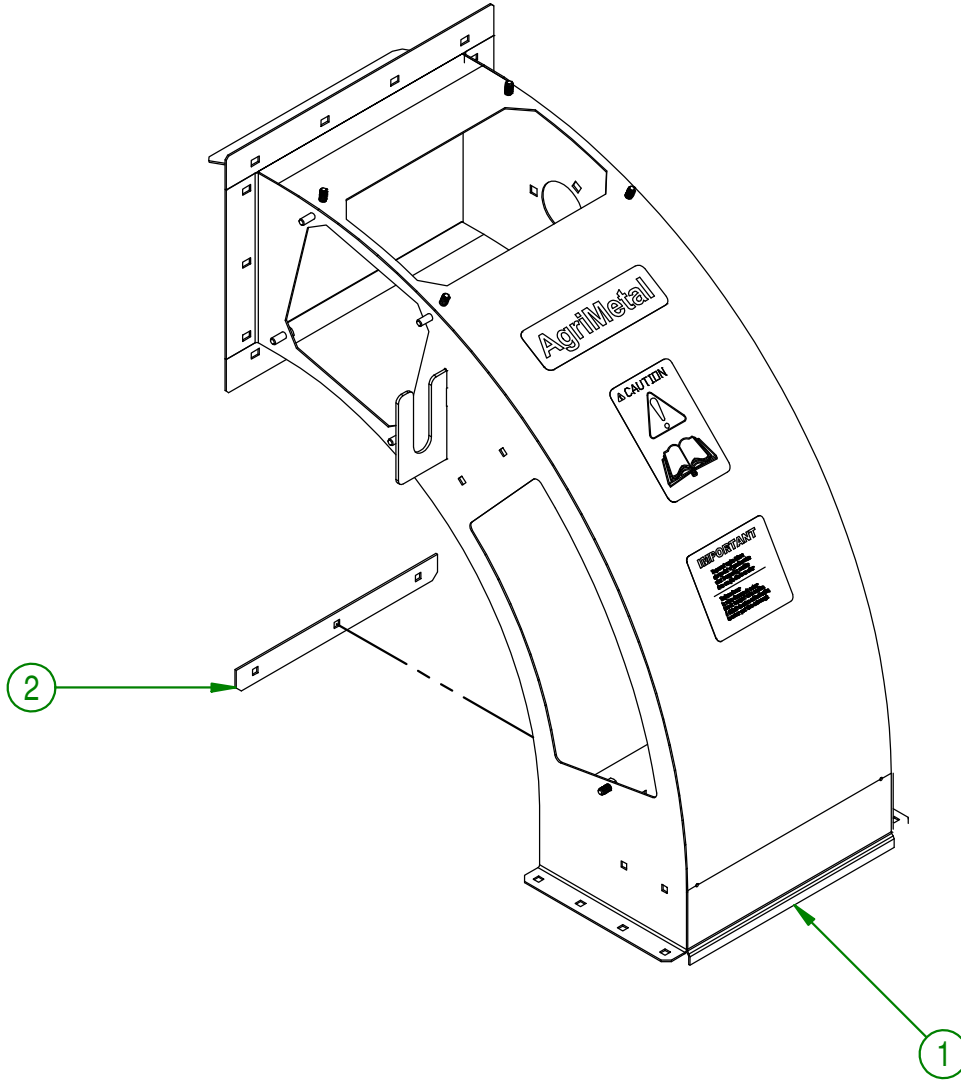
|                       |                                |
|-----------------------|--------------------------------|
| <b>AGRIMETAL</b>      |                                |
| <b>BACK DOOR ASSY</b> |                                |
| CREATION : 06/12/16   | ASSEMBLY : <b>23-57-1180</b>   |
| REVISION : 02/02/18   | AUTHOR : J.KABWE Page 24 de 38 |

| # | PART #       | Qty | TITLE   |
|---|--------------|-----|---|
| 1 | 23-57-1185   | 1   | BACK DOOR "STICKER INCLUDED"                            |
| 2 | 23-42-0030   | 1   | RUBBER BACK DOOR  |
| 3 | NC01-78-0016 | 27  | ALUMINIUM BLIND POP RIVET STEEL MANDREL 0.187 X 0.690   |
| 4 | 16-01-2720   | 27  | WASHER 13/16" DIA. X 13/64"                             |
| 5 | NC13-15-0064 | 2   | BLACK RUBBER SN60 1/8 THICK. X 3 1/2" X 10 1/2" +0-1/16 |



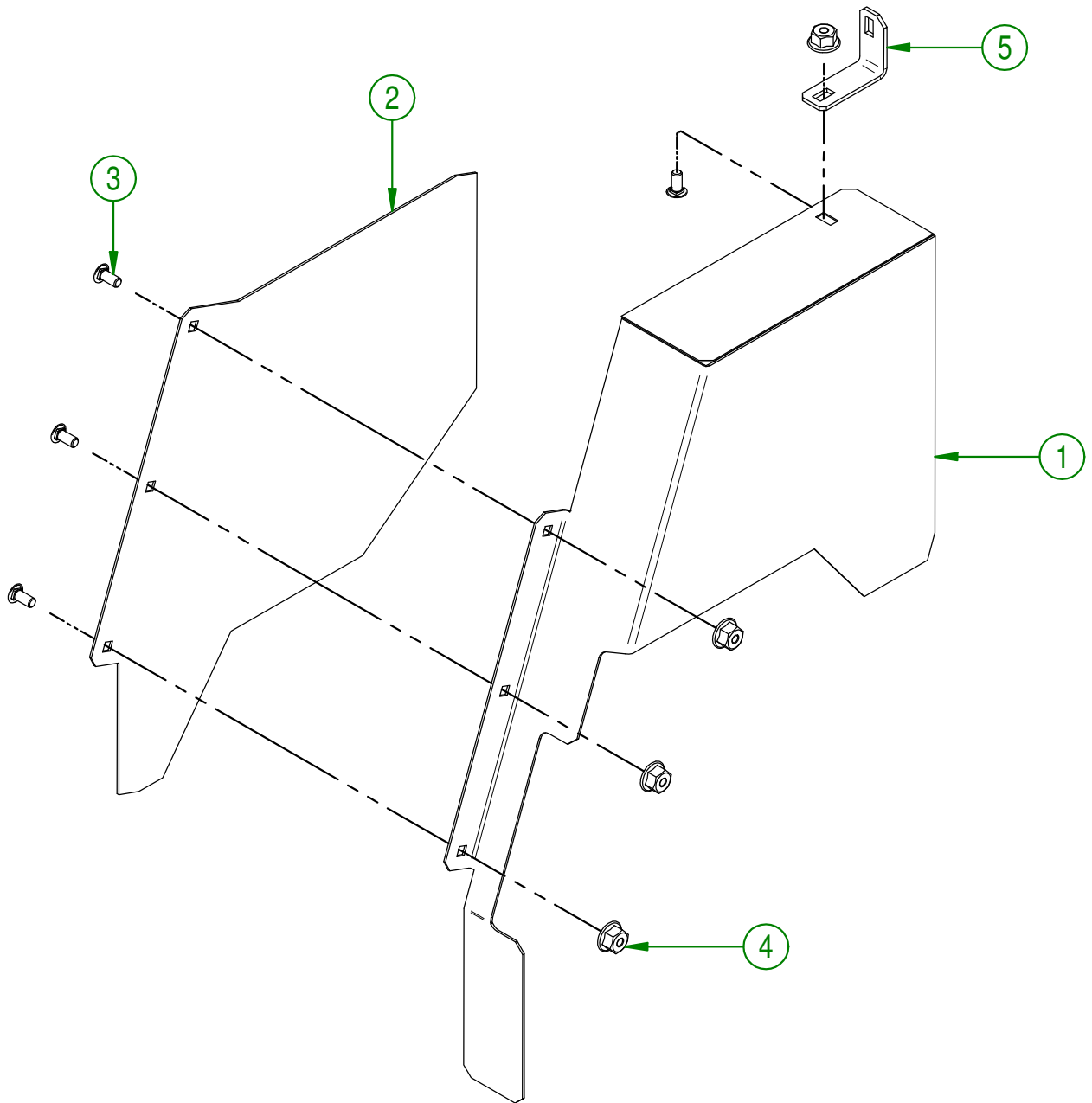
|                           |                                |
|---------------------------|--------------------------------|
| <b>AGRIMETAL</b>          |                                |
| <b>BACK DOOR PRE ASS.</b> |                                |
| CREATION : 06/12/16       | ASSEMBLY : <b>23-55-1090</b>   |
| REVISION : 02/02/18       | AUTHOR : J.KABWE Page 25 de 38 |

| # | PART #     | Qty | TITLE                |
|---|------------|-----|----------------------|
| 1 | 23-50-1015 | 1   | CHUT ELBOW 90°       |
| 2 | 23-22-2200 | 1   | IMPELLER SPACER SIDE |



|                                   |                                  |
|-----------------------------------|----------------------------------|
| <b>AGRIMETAL</b>                  |                                  |
| CHUT ELBOW 90° "STICKER INCLUDED" |                                  |
| CREATION : 06/12/16               | ASSEMBLY : <b>23-57-1190</b>     |
| REVISION : 10/01/18               | AUTHOR : J.KABWE   Page 26 de 38 |

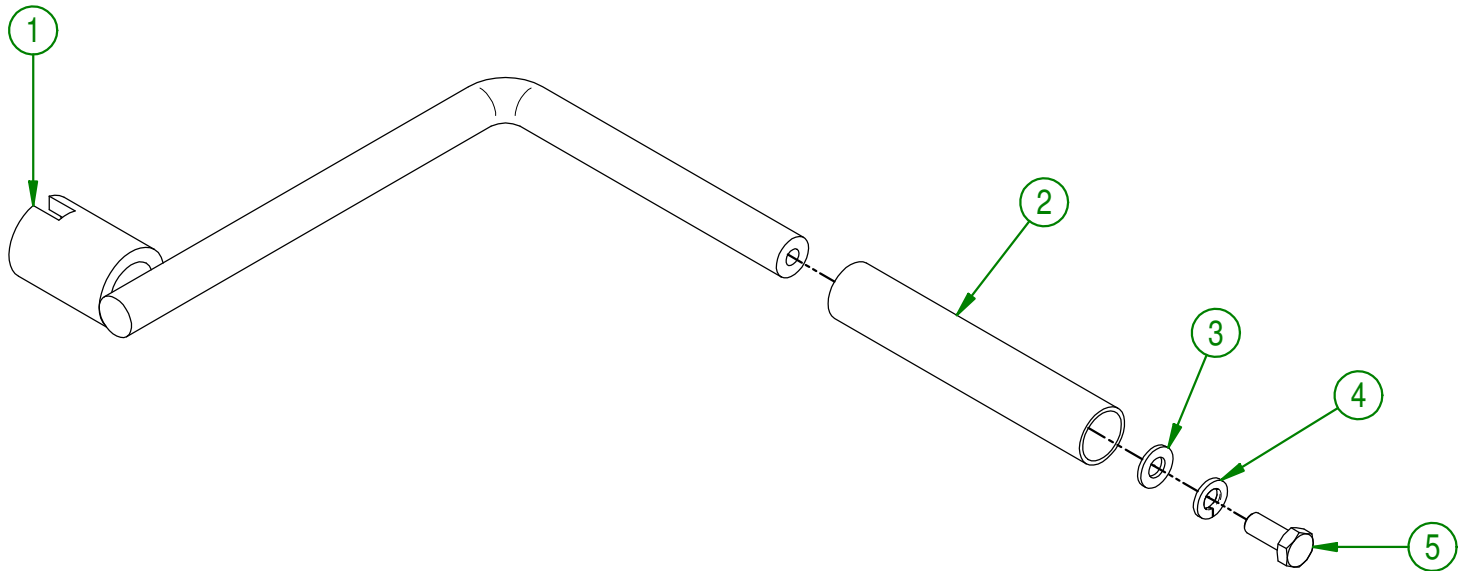
| # | PART #       | Qty | TITLE                              |
|---|--------------|-----|------------------------------------|
| 1 | 23-50-1066   | 1   | BEFORE ENGINE SHAFT GUARD (KOHLER) |
| 2 | 23-01-3105   | 1   | BACK ENGINE SHAFT GUARD            |
| 3 | NC01-04-0001 | 4   | CARR. BOLT GR2 ZINC 1/4-20 X1/2"   |
| 4 | NC02-14-0017 | 4   | FLANGED NUT GR. B 1/4-20           |
| 5 | 23-01-7660   | 1   | GUARD BRAKET                       |



|                                  |                                  |
|----------------------------------|----------------------------------|
| <b>AGRIMETAL</b>                 |                                  |
| KOHLER ENGINE SHAFT GAURD GROUP. |                                  |
| CREATION : 12/09/17              | ASSEMBLY : <b>23-57-1281</b>     |
| REVISION : 29/10/18              | AUTHOR : J.KABWE   Page 27 de 38 |

23-55-0050

| # | PART #       | Qty | TITLE                             |
|---|--------------|-----|-----------------------------------|
| 1 | 23-50-0070   | 1   | CRANK HANDLE                      |
| 2 | 23-42-0000   | 1   | CONVEYOR CRANK HANDLE TUBE        |
| 3 | NC02-22-0008 | 1   | WASHER ZINC 5/16"                 |
| 4 | NC02-32-0011 | 1   | LOCK WASHER ZINC 5/16"            |
| 5 | NC01-17-0058 | 1   | HEX. BOLT GR2 ZINC 5/16-18 X 3/4" |



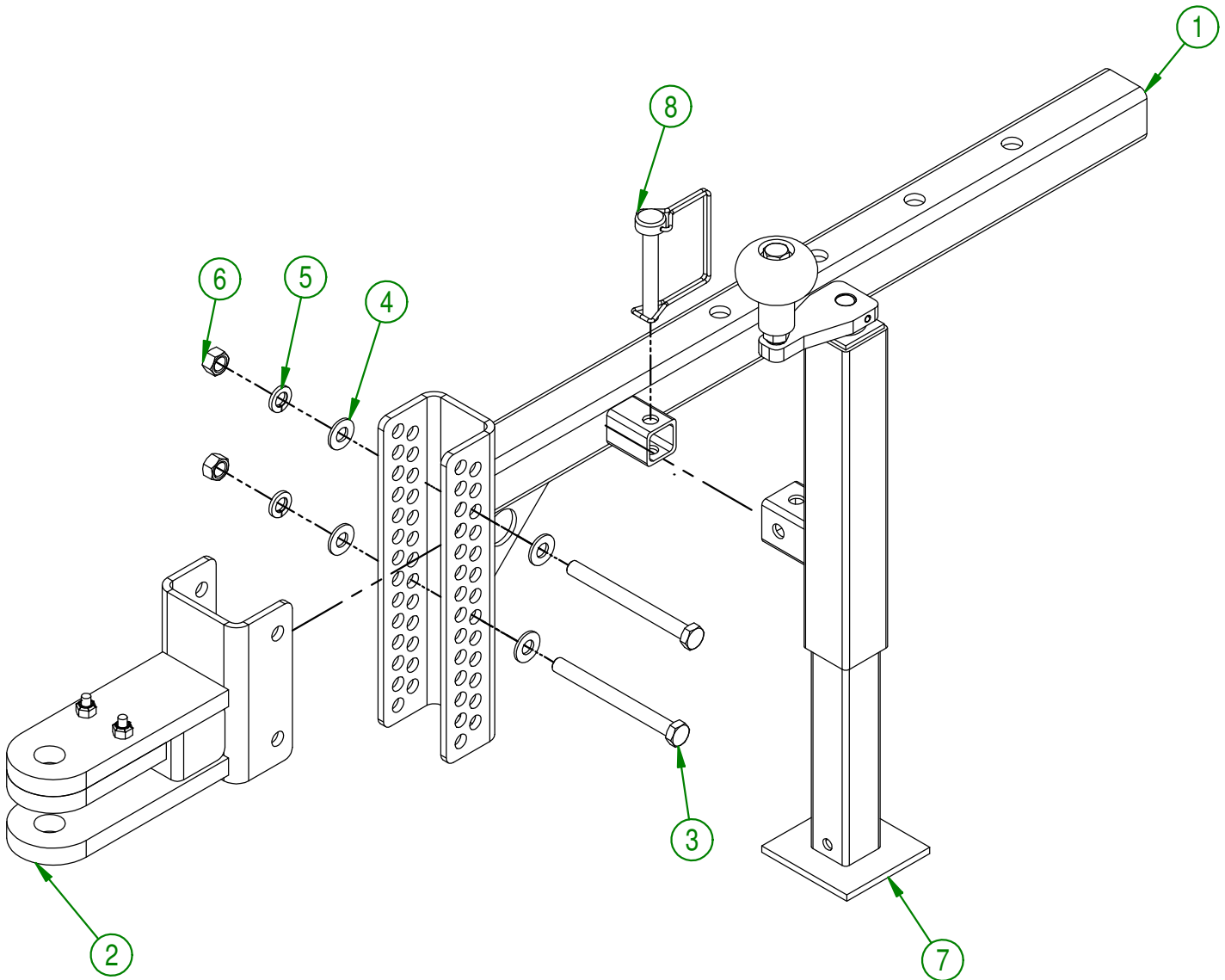
**AGRIMETAL**  
**CRANK HANDLE ASSY.**

CREATION : 06/12/16  
REVISION : 10/01/18

ASSEMBLY : **23-55-0050**

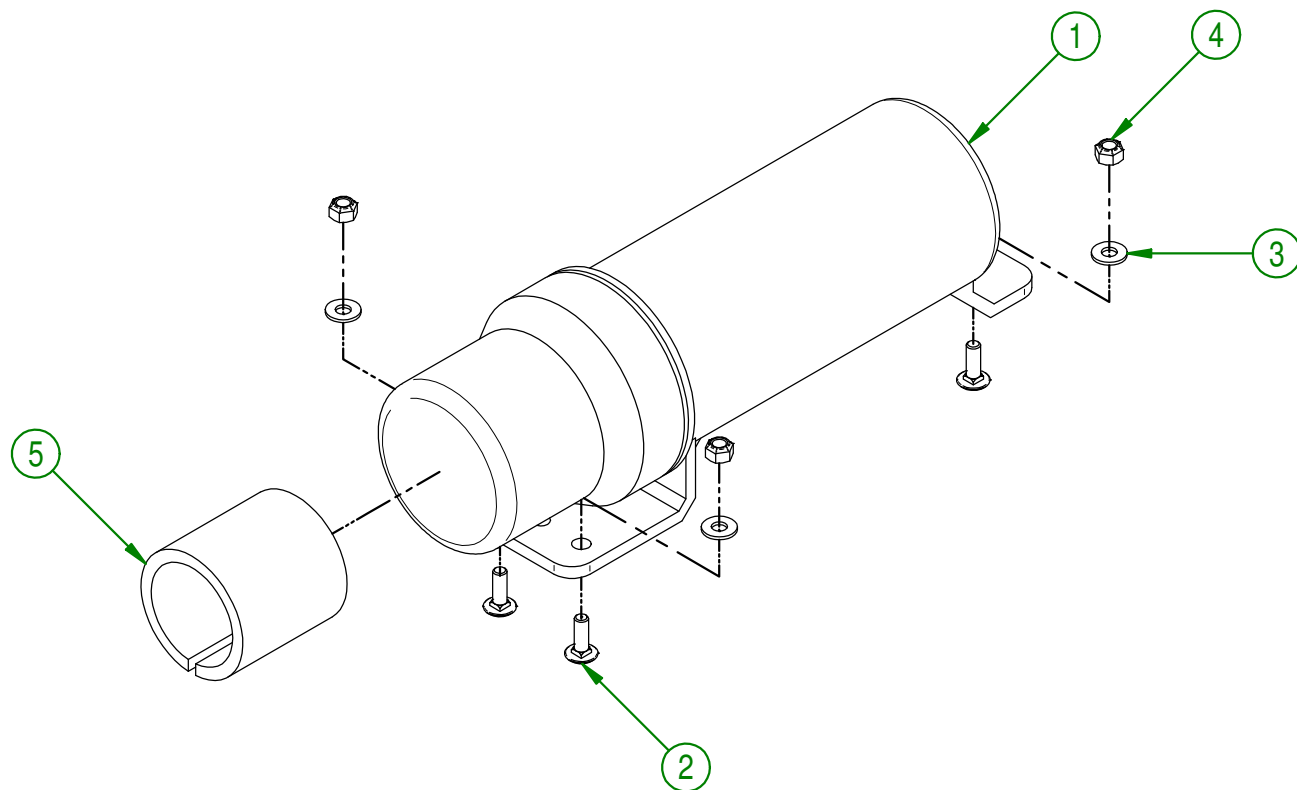
AUTHOR : J.KABWE | Page 28 de 38

| # | PART #       | Qty | TITLE                                    |
|---|--------------|-----|--|
| 1 | 23-50-0040   | 1   | TELESCOPING HITCH                        |
| 2 | 23-55-0110   | 1   | HITCH (11/16")                           |
| 3 | NC01-25-0126 | 2   | HEX. BOLT GR5 ZINC 3/8-16 X 4"           |
| 4 | 01-01-2485   | 4   | FLAT WASHER 14 GA X 13/16"OD X 25/64" ID |
| 5 | NC02-32-0012 | 2   | LOCK WASHER ZINC 3/8"                    |
| 6 | NC02-07-0018 | 2   | HEX. NUT ZINC 3/8-16                     |
| 7 | 38-55-0050   | 1   | JACK                                     |
| 8 | NC01-69-1306 | 1   | LOCKING PIN 3/8" X 2 1/2" LG             |



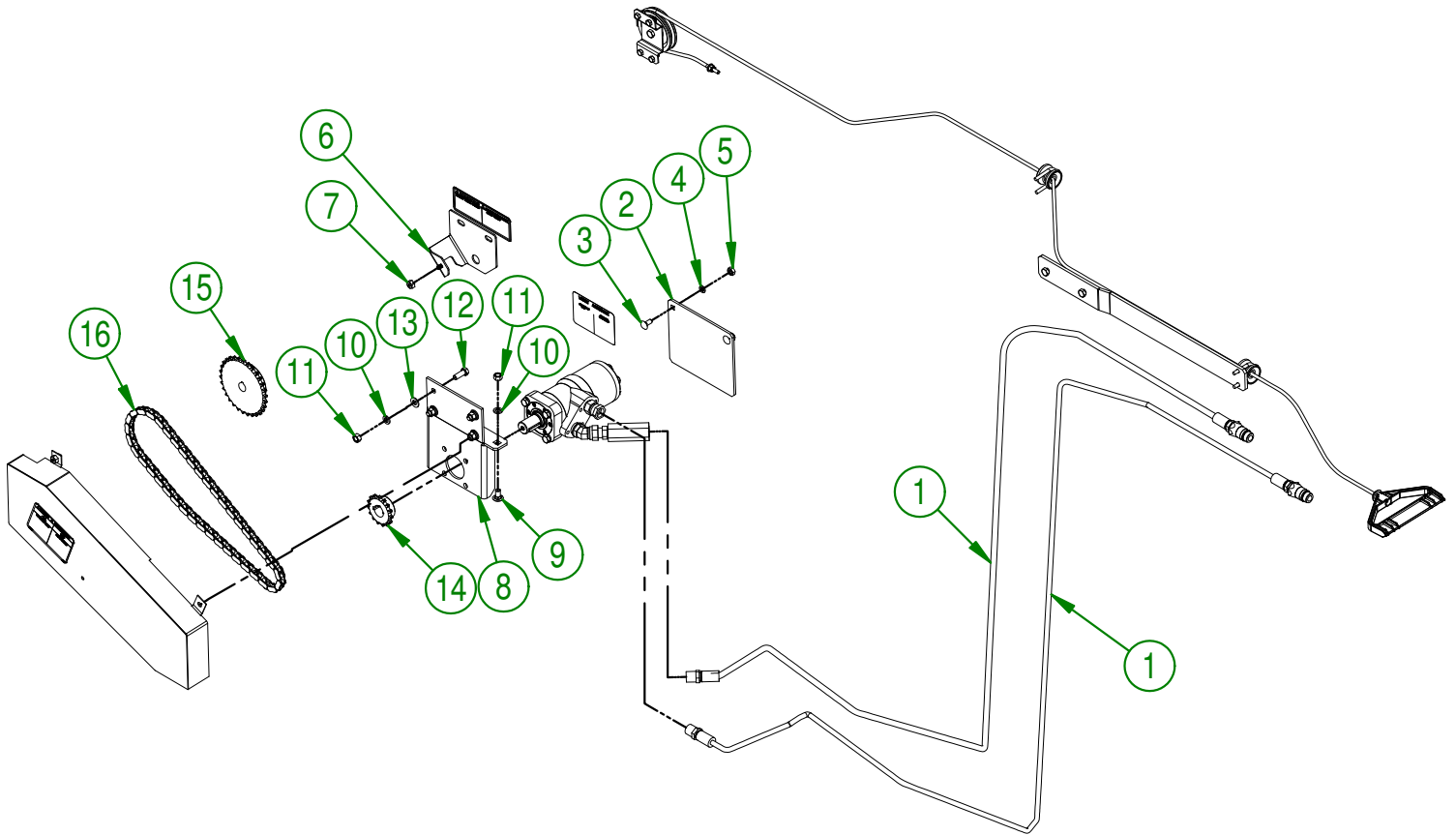
|   |                                  |
|---|----------------------------------|
| <b>AGRIMETAL</b>                                  |                                  |
| <b>REMOVIBLE HITCH, HAND CLIP &amp; JACK ASSY</b> |                                  |
| CREATION : 06/12/16                               | ASSEMBLY : <b>23-55-0035</b>     |
| REVISION : 26/10/18                               | AUTHOR : J.KABWE   Page 29 de 38 |

| # | PART #       | Qty | TITLE                                  |
|---|--------------|-----|--|
| 1 | NCI3-30-0237 | 1   | PLASTIC TUBE FOR OPERATOR'S MANUAL     |
| 2 | NC01-04-0003 | 3   | CARR. BOLT GR2 ZINC 1/4-20 X 3/4"      |
| 3 | NC02-25-0007 | 3   | WASHER ZINC 0.281 = 9/32               |
| 4 | NC01-96-0009 | 3   | NYLON-INSERT LOCKNUT ZINC 1/4-20       |
| 5 | 23-98-0507   | 1   | MANUAL OPER. LEAF AND DEBRIS COLLECTOR |



|  |                                  |
|--|----------------------------------|
| <b>AGRIMETAL</b>                                   |                                  |
| <b>MANUAL OPER. LEAF AND DEBRIS COLLECTOR ASSY</b> |                                  |
| CREATION : 06/12/16                                | ASSEMBLY : <b>23-57-1200</b>     |
| REVISION : 26/10/18                                | AUTHOR : J.KABWE   Page 30 de 38 |

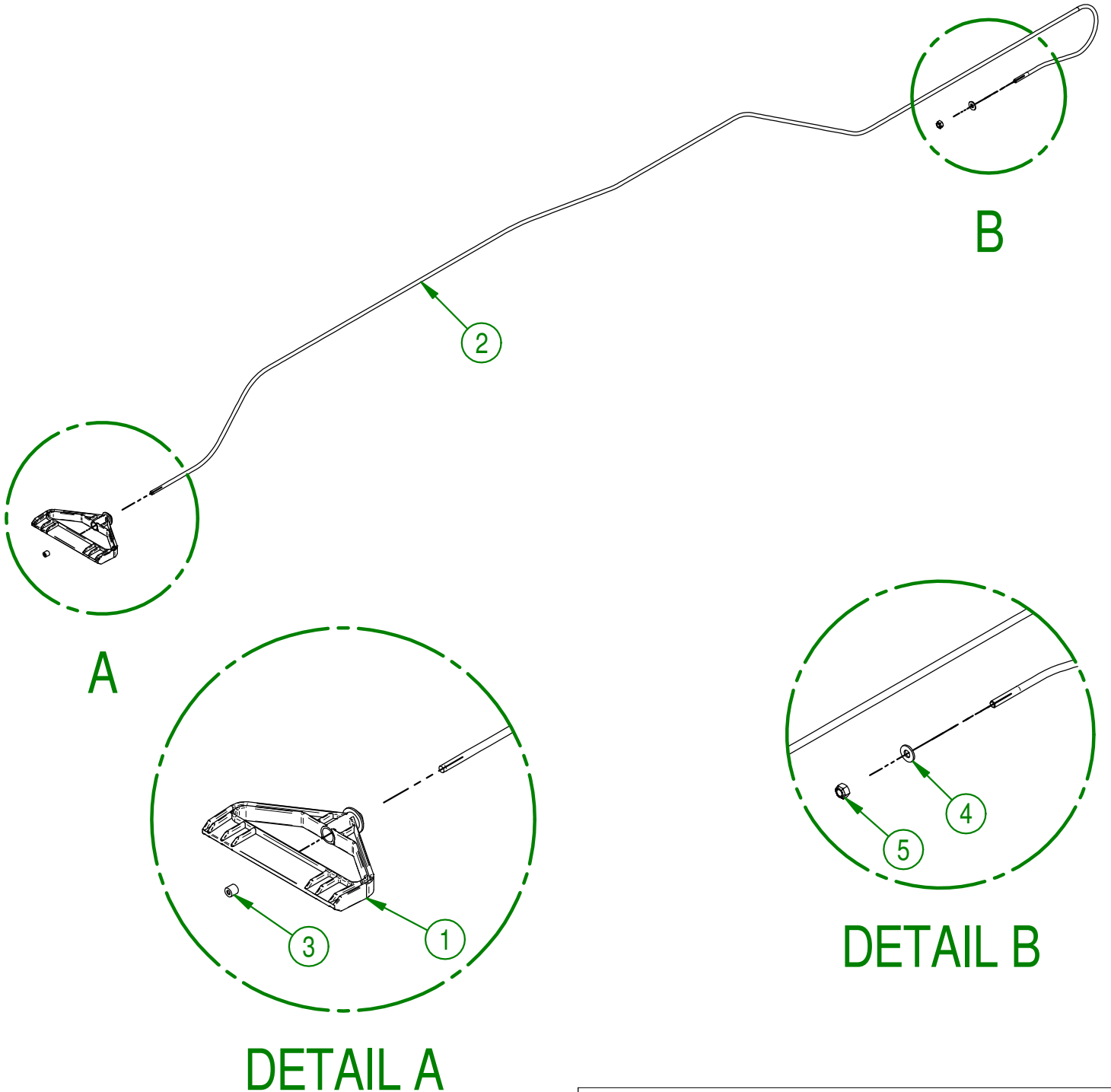
| #  | PART #       | Qty | TITLE  |
|----|--------------|-----|--|
| 1  | 23-55-1037   | 2   | 3/8" H HYDRAULIC HOSE ASSY. MALE FITTING           |
| 2  | 23-04-0080   | 1   | HYDRAULIC MOTOR GUARD                              |
| 3  | NC01-04-0056 | 2   | CARR. BOLT 5/16-18 X3/4"                           |
| 4  | NC02-32-0011 | 2   | LOCK WASHER ZINC 5/16"                             |
| 5  | NC02-07-0017 | 2   | HEX. NUT 5/16-18                                   |
| 6  | 23-50-1050   | 1   | DOOR LATCH PIVOT                                   |
| 7  | NC02-14-0017 | 1   | FLANGED NUT GR. B 1/4-20                           |
| 8  | 23-50-1060   | 1   | HYDRAULIC MOTOR SUPPORT (OPTION)                   |
| 9  | NC01-04-0107 | 2   | CARR. BOLT GR2 ZINC 3/8-16 X 3/4"                  |
| 10 | NC02-32-0012 | 6   | LOCK WASHER ZINC 3/8"                              |
| 11 | NC02-07-0018 | 6   | HEX. NUT ZINC 3/8-16                               |
| 12 | NC01-17-0114 | 4   | HEX. BOLT GR2 ZINC 3/8-16 X 1"                     |
| 13 | 01-01-2485   | 4   | FLAT WASHER 14 GA X 13/16"OD X 25/64" ID           |
| 14 | NC14-55-0027 | 1   | SPROCKET 40B15H X 1" DIA. KW 1/4" 2SS 5/16-18      |
| 15 | NC14-55-0235 | 1   | SPROCKET 40B30H X DIA. 3/4", KW 3/16". 2SS 5/16-18 |
| 16 | 23-37-1010   | 1   | CHAIN # 40 X 39 3/4" TL + MANUAL DECK CONVEYOR     |



|  |                                |
|--|--------------------------------|
| <b>AGRIMETAL</b>                       |                                |
| <b>HYDRAULIC CONVEYOR KIT (OPTION)</b> |                                |
| CREATION : 07/09/17                    | ASSEMBLY : <b>23-55-1025</b>   |
| REVISION : 10/06/19                    | AUTHOR : J.KABWE Page 31 de 38 |



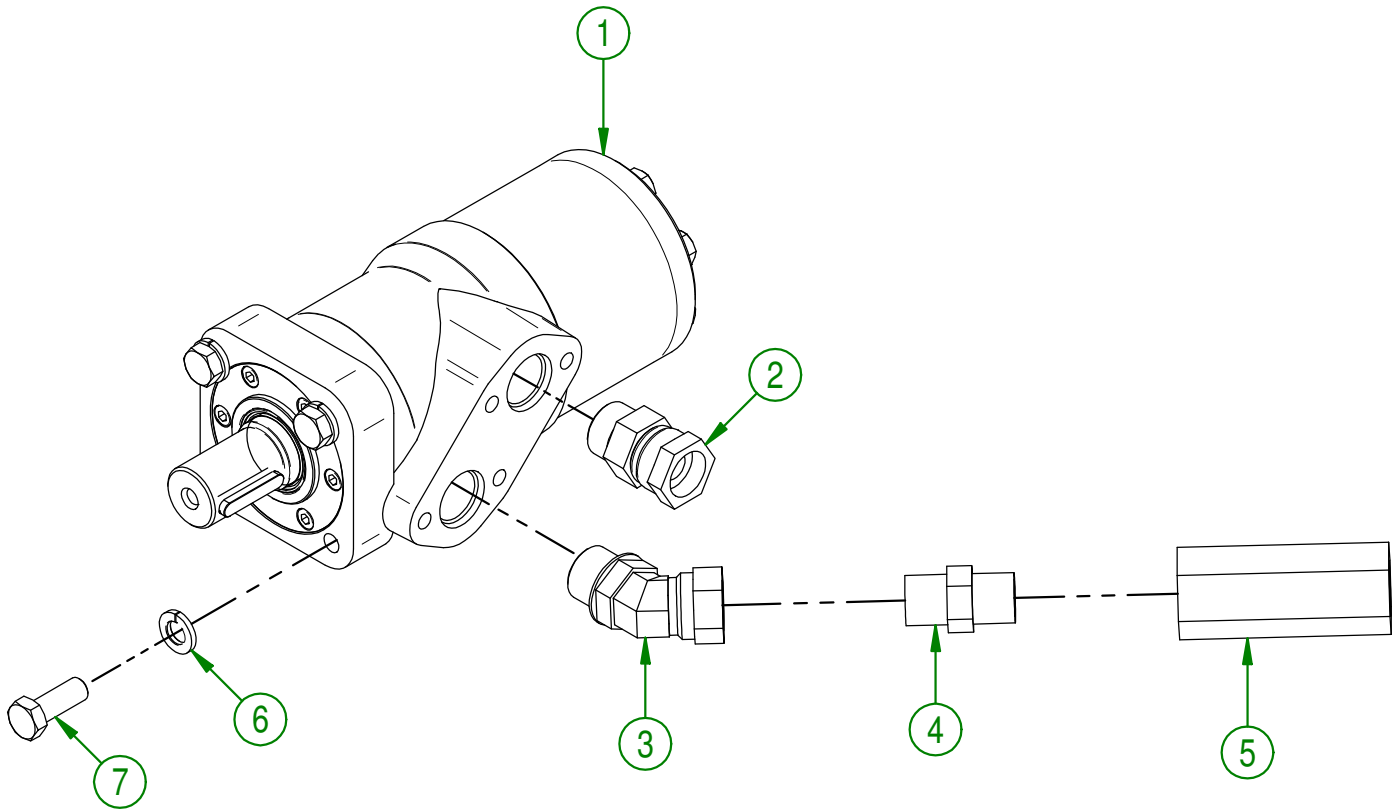
| # | PART #       | Qty | TITLE                              |
|---|--------------|-----|------------------------------------|
| 1 | NCI3-80-0065 | 1   | STARTER HANDLE                     |
| 2 | NCI7-02-0193 | 1   | LEAF COLLECTOR CABLE 91 1/4" ASSY. |
| 3 | NC01-64-0239 | 1   | 3/32 ALUMINIUM STOP RING           |
| 4 | NC02-25-0007 | 1   | WASHER ZINC 0.281 = 9/32           |
| 5 | NC01-96-0009 | 1   | NYLON-INSERT LOCKNUT ZINC 1/4-20   |



|                               |                                |
|-------------------------------|--------------------------------|
| <b>AGRIMETAL</b>              |                                |
| <b>BACK DOOR HANDLE ASSY.</b> |                                |
| CREATION : 21/09/17           | ASSEMBLY : <b>23-55-1010</b>   |
| REVISION : 10/01/18           | AUTHOR : J.KABWE Page 32 de 38 |

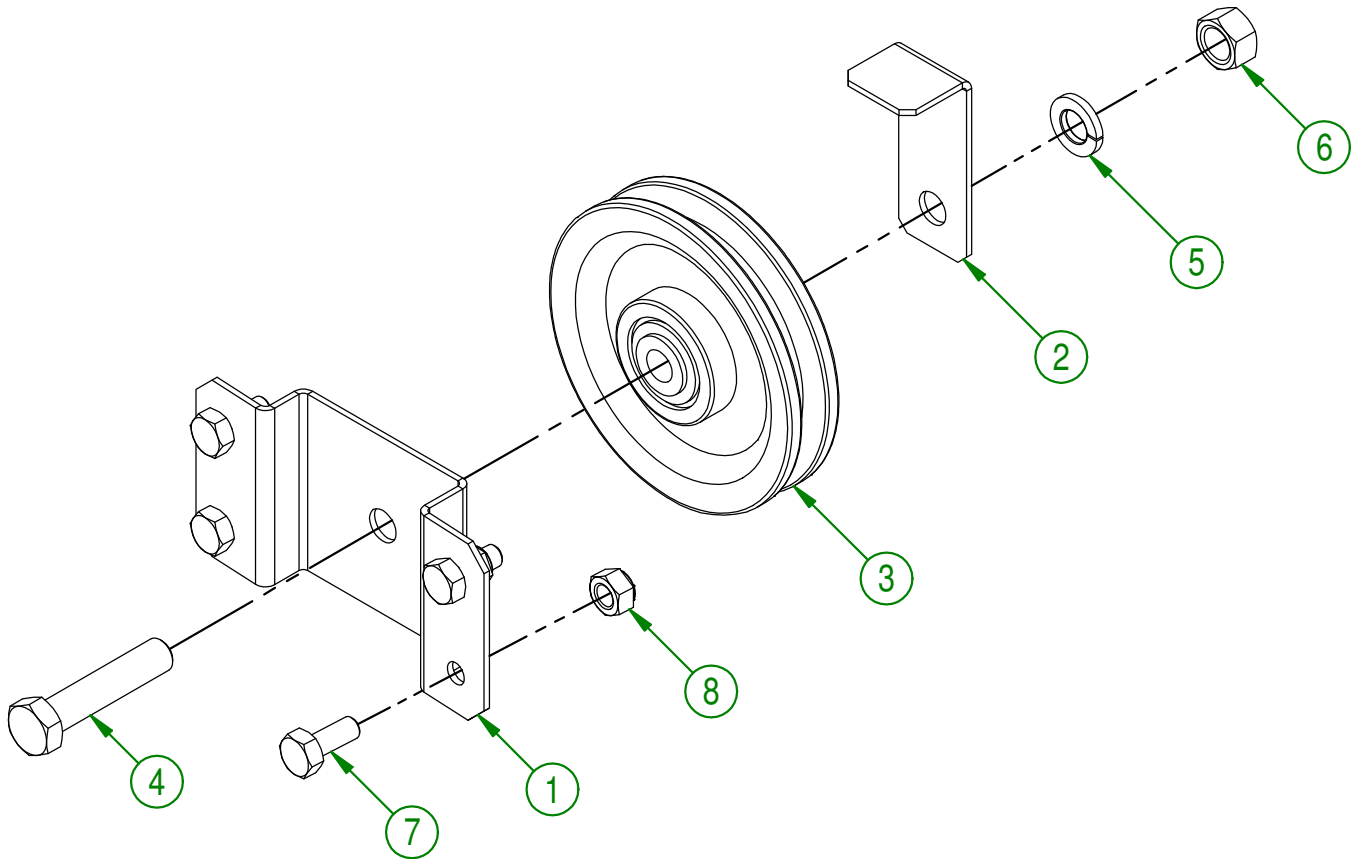
23-55-1060

| # | PART #       | Qty | TITLE  |
|---|--------------|-----|--|
| 1 | NC14-45-0004 | 1   | HYDRAULIC MOTOR TB MODEL                     |
| 2 | NC13-45-0084 | 1   | UNION 7/8-14 MALE SAE10 ORINGX1/2 FEM.TOUR.N |
| 3 | NC13-45-0046 | 1   | 45°-7/8-14 MALE O RING X 1/2 FEM.TOUR.NPT PT |
| 4 | NC13-45-0029 | 1   | HEX. NIPPLE 1/2 MALE NPT X 1/2 MALE NPT      |
| 5 | NC13-45-0020 | 1   | CHECK VALVE 1/2 NPT                          |
| 6 | NC02-32-0012 | 4   | LOCK WASHER ZINC 3/8"                        |
| 7 | NC01-17-0114 | 4   | HEX. BOLT GR2 ZINC 3/8-16 X 1"               |



|                                |                                  |
|--------------------------------|----------------------------------|
| <b>AGRIMETAL</b>               |                                  |
| HYDRAULIC MOTOR ASSY. (OPTION) |                                  |
| CREATION : 07/09/17            | ASSEMBLY : <b>23-55-1060</b>     |
| REVISION : 10/01/18            | AUTHOR : J.KABWE   Page 33 de 38 |

| # | PART #       | Qty | TITLE                                   |
|---|--------------|-----|---|
| 1 | 23-01-2470   | 1   | PULLEY SUPPORT                          |
| 2 | 23-01-2475   | 1   | CABLE STOPPER                           |
| 3 | NC14-63-0001 | 1   | PULLEY PLASTIC 3 1/2" OD X BEARING 3/8" |
| 4 | NC01-17-0117 | 1   | HEX. BOLT GR2 ZINC 3/8-16 X 1 3/4"      |
| 5 | NC02-32-0012 | 1   | LOCK WASHER ZINC 3/8"                   |
| 6 | NC02-07-0018 | 1   | HEX. NUT ZINC 3/8-16                    |
| 7 | NC01-17-0003 | 4   | HEX. BOLT GR2 ZINC 1/4-20 X 5/8"        |
| 8 | NC01-96-0009 | 4   | NYLON-INSERT LOCKNUT ZINC 1/4-20        |

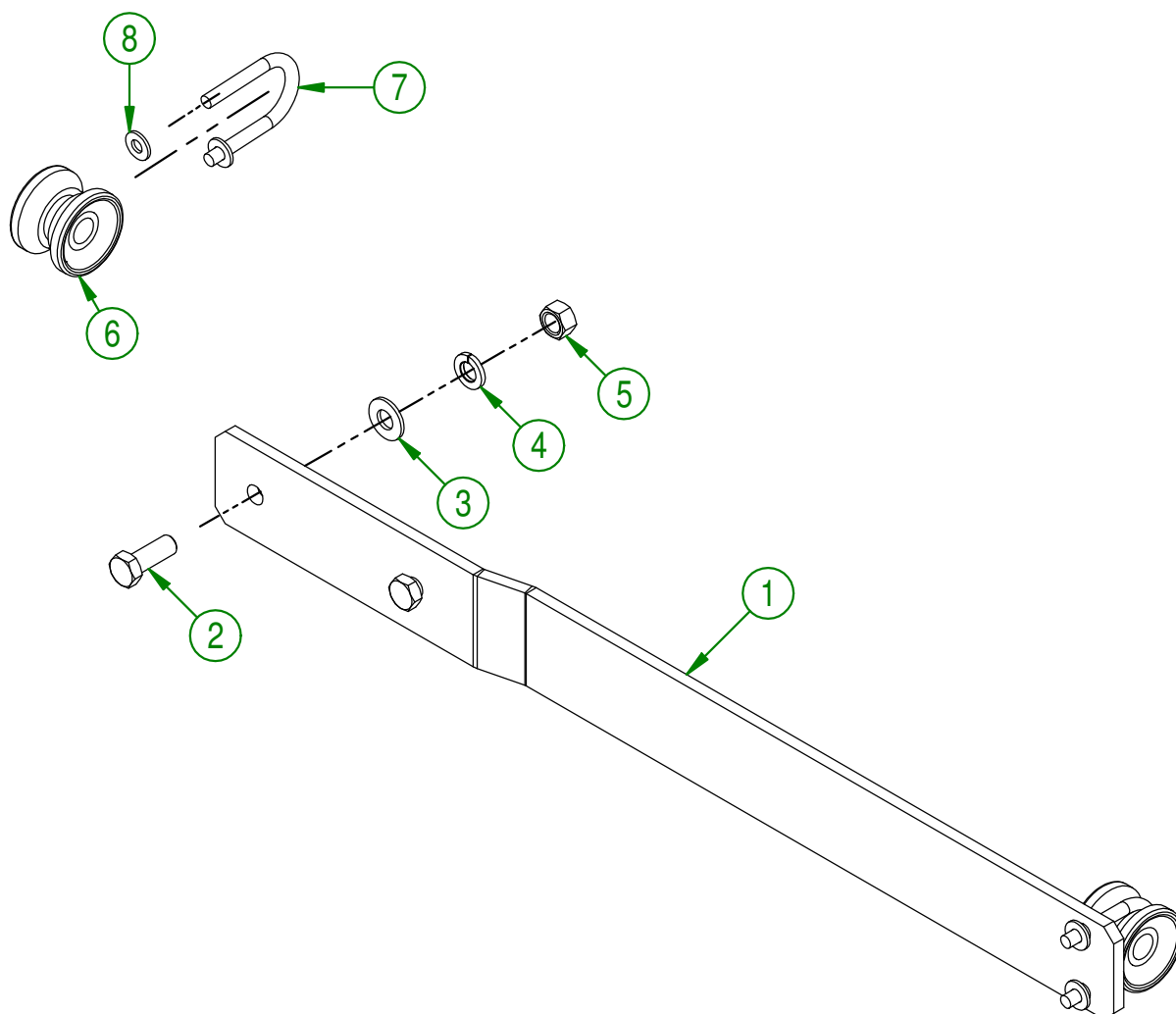
**AGRIMETAL****PULLEY SUPPORT ASSY**

CREATION : 07/09/17  
 REVISION : 10/01/18

ASSEMBLY : **23-55-1065**

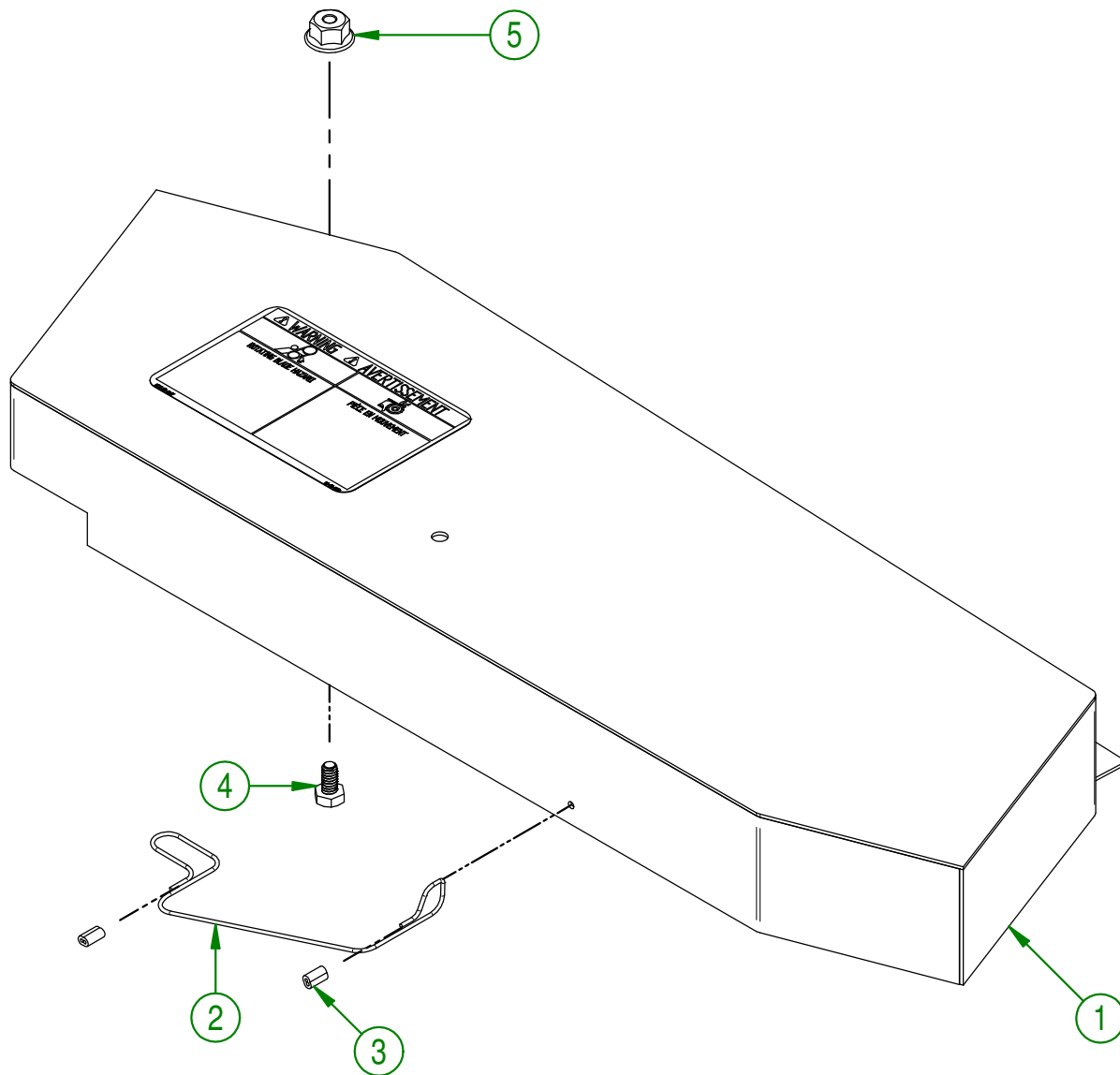
AUTHOR : J.KABWE | Page 34 de 38

| # | PART #       | Qty | TITLE                          |
|---|--------------|-----|--------------------------------|
| 1 | 23-04-0215   | 1   | DOOR CABLE SUPPORT             |
| 2 | NC01-17-0114 | 2   | HEX. BOLT GR2 ZINC 3/8-16 X 1" |
| 3 | 01-01-2485   | 2   | FLAT WASHER                    |
| 4 | NC02-32-0012 | 2   | LOCK WASHER ZINC 3/8"          |
| 5 | NC02-07-0018 | 2   | HEX. NUT ZINC 3/8-16           |
| 6 | NC13-80-0203 | 2   | REAR DOOR CABLE SLEEVE         |
| 7 | NC01-61-0001 | 2   | U BOLT ZINC 1/4-20 X 2 INSIDE  |
| 8 | NC02-22-0007 | 4   | WASHER 1/4" DIA. X 6/16" OD    |

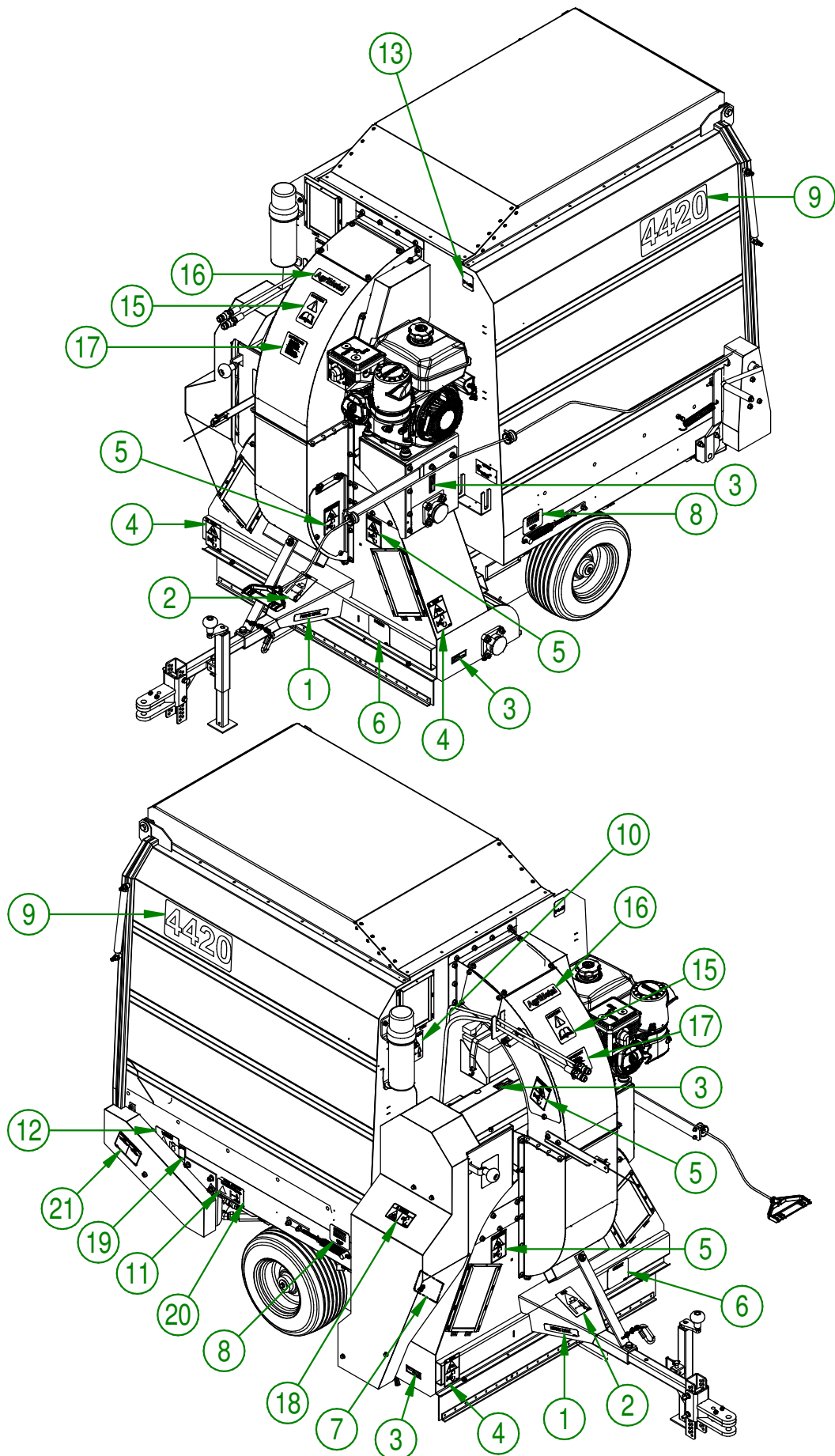


|                                  |                                  |
|----------------------------------|----------------------------------|
| <b>AGRIMETAL</b>                 |                                  |
| <b>DOOR CABLE SUPPORT GROUP.</b> |                                  |
| CREATION : 07/09/17              | ASSEMBLY : <b>23-57-1245</b>     |
| REVISION : 01/02/18              | AUTHOR : J.KABWE   Page 35 de 38 |

| # | PART #       | Qty | TITLE  |
|---|--------------|-----|--|
| 1 | 23-50-1075   | 1   | CHAIN GUARD  |
| 2 | 23-41-0137   | 1   | STEEL WIRE CONVEYOR PROTECTION DIA. 1/16" X 15" TL |
| 3 | NC01-64-0005 | 2   | OVAL SLEEVE (ALUMINUM)                             |
| 4 | NC01-17-0002 | 1   | HEX. BOLT GR2 ZINC 1/4-20 X 1/2"                   |
| 5 | NC02-14-0017 | 1   | FLANGED NUT GR. B 1/4-20                           |

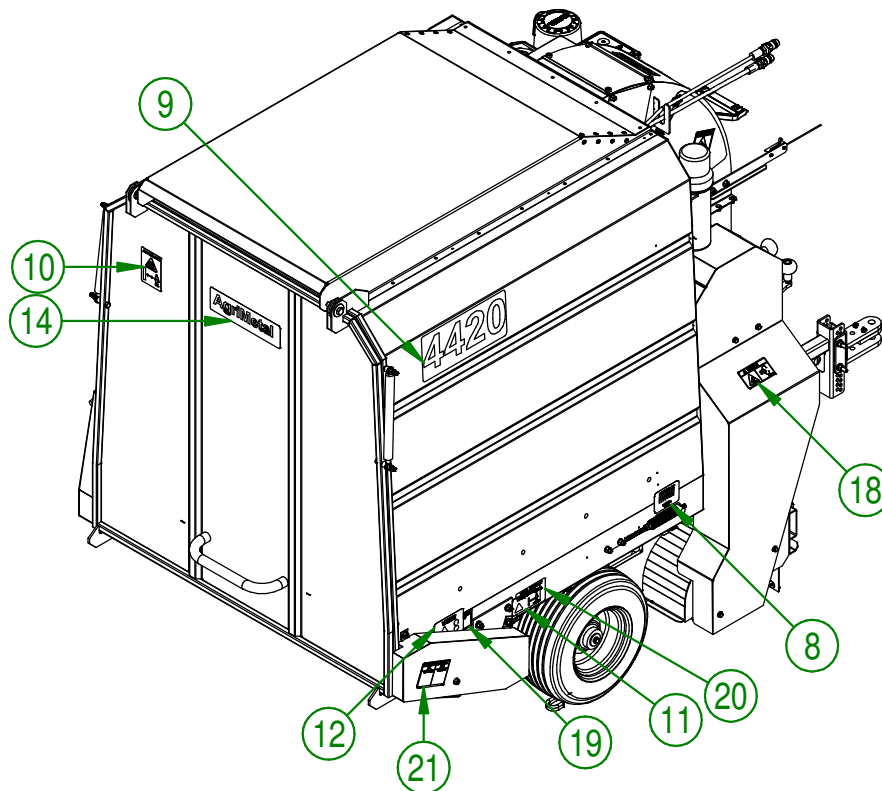


|   |                                  |
|---|----------------------------------|
| <b>AGRIMETAL</b>                                  |                                  |
| CHAIN GUARD "STICKER INCLUDED" (HYDRAULIC OPTION) |                                  |
| CREATION : 08/09/17                               | ASSEMBLY : <b>23-57-1025</b>     |
| REVISION : 26/10/18                               | AUTHOR : J.KABWE   Page 36 de 38 |



|   |                              |
|---|------------------------------|
| <b>AGRIMETAL</b>                                |                              |
| LEAF COLLECTOR 4420 (NYLON BRUSH) 9.5 HP KOHLER |                              |
| CREATION : 21/09/17                             | ASSEMBLY : <b>23-99-0511</b> |
| REVISION : 14/09/21                             | AUTHOR : J.KABWE             |

| #  | PART #       | Qty | TITLE   |
|----|--------------|-----|---|
| 1  | NC13-33-0052 | 2   | STICKER FRAME LEVEL                                     |
| 2  | NC13-33-0297 | 1   | STICKER TIMON UP  |
| 3  | NC13-33-0024 | 6   | STICKER GREASE HERE                                     |
| 4  | NC13-33-0190 | 2   | STICKER WARNING ROTATING BLADE HAZARD                   |
| 5  | NC13-33-0186 | 4   | STICKER (DANGER)  |
| 6  | NC13-33-0152 | 1   | STICKER RUBBER DOWN IMPORTANT                           |
| 7  | NC13-33-0290 | 1   | STICKER DANGER  |
| 8  | NC13-33-0070 | 2   | STICKER SPRING IMPORTANT STICKER AT 3 1/2 INCHES, 89 MM |
| 9  | NC13-33-0140 | 2   | STICKER FOR 4420 LEAF COLLECTOR                         |
| 10 | NC13-33-0192 | 2   | STICKER (PROJECTION RISK)                               |
| 11 | NC13-33-0288 | 1   | STICKER WARNING HIGH-PRESSURE LIQUID                    |
| 12 | NC13-33-0289 | 1   | STICKER WARNING   |
| 13 | NC13-33-0169 | 1   | STICKER 94 DB   |
| 14 | NC13-33-0035 | 1   | STICKER AGRIMETAL                                       |
| 15 | NC13-33-0183 | 1   | STICKER CAUTION OPERATION MANUAL                        |
| 16 | NC13-33-0002 | 1   | STICKER AGRIMETAL                                       |
| 17 | NC13-33-0151 | 1   | STICKER (IMPORTANT TO PREVENT ENGINE FAILURE...)        |
| 18 | NC13-33-0276 | 1   | STICKER (WARNING)                                       |
| 19 | NC13-33-0113 | 1   | STICKER WARNING   |
| 20 | NC13-33-0046 | 1   | STICKER HIGH-PRESSURE FLUID HAZARD                      |
| 21 | NC13-33-0017 | 1   | STICKER WARNING   |



|   |                              |
|---|------------------------------|
| <b>AGRIMETAL</b>                                |                              |
| LEAF COLLECTOR 4420 (NYLON BRUSH) 9.5 HP KOHLER |                              |
| CREATION : 21/09/17                             | ASSEMBLY : <b>23-99-0511</b> |
| REVISION : 14/09/21                             | AUTHOR : J.KABWE             |