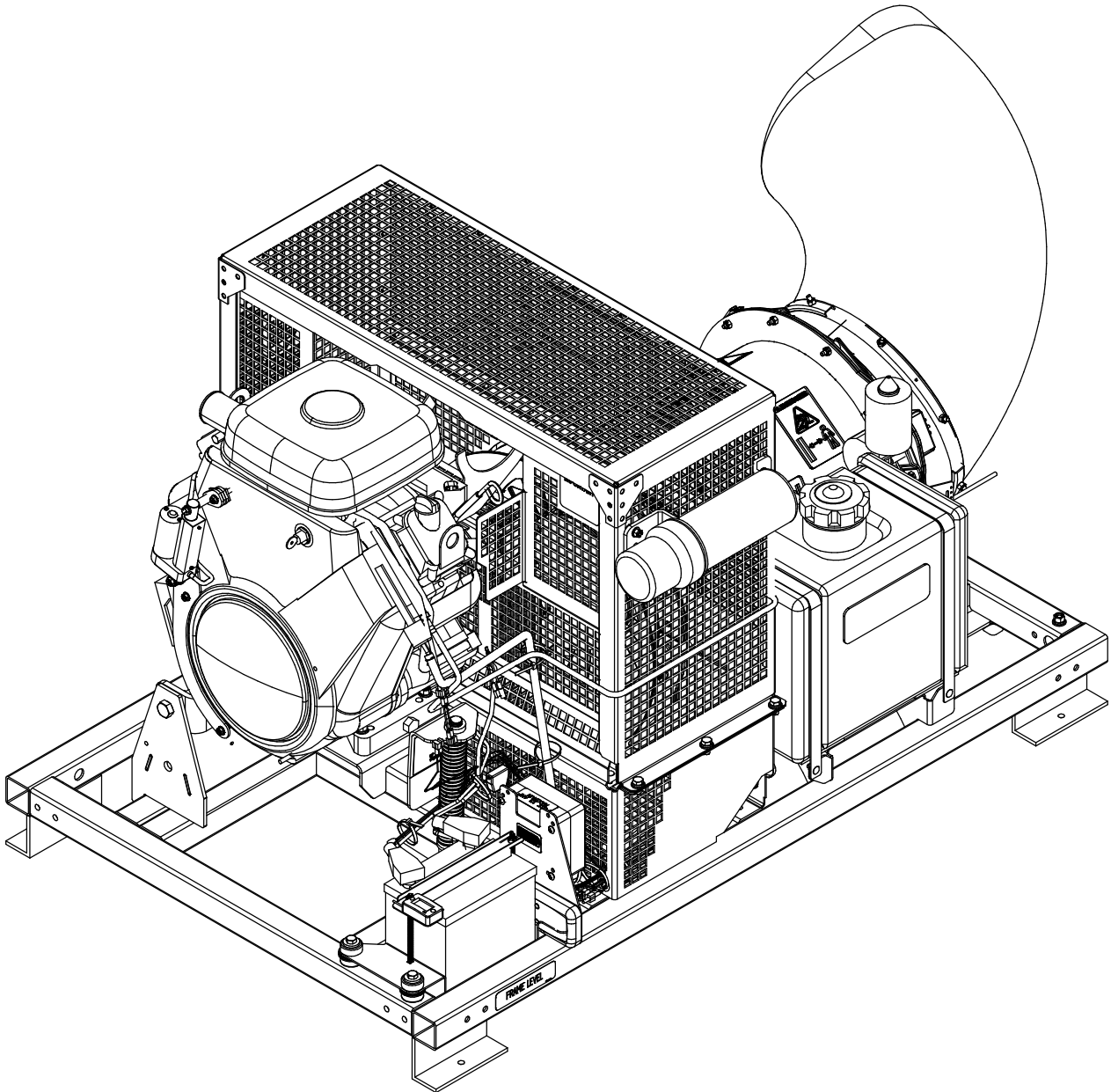
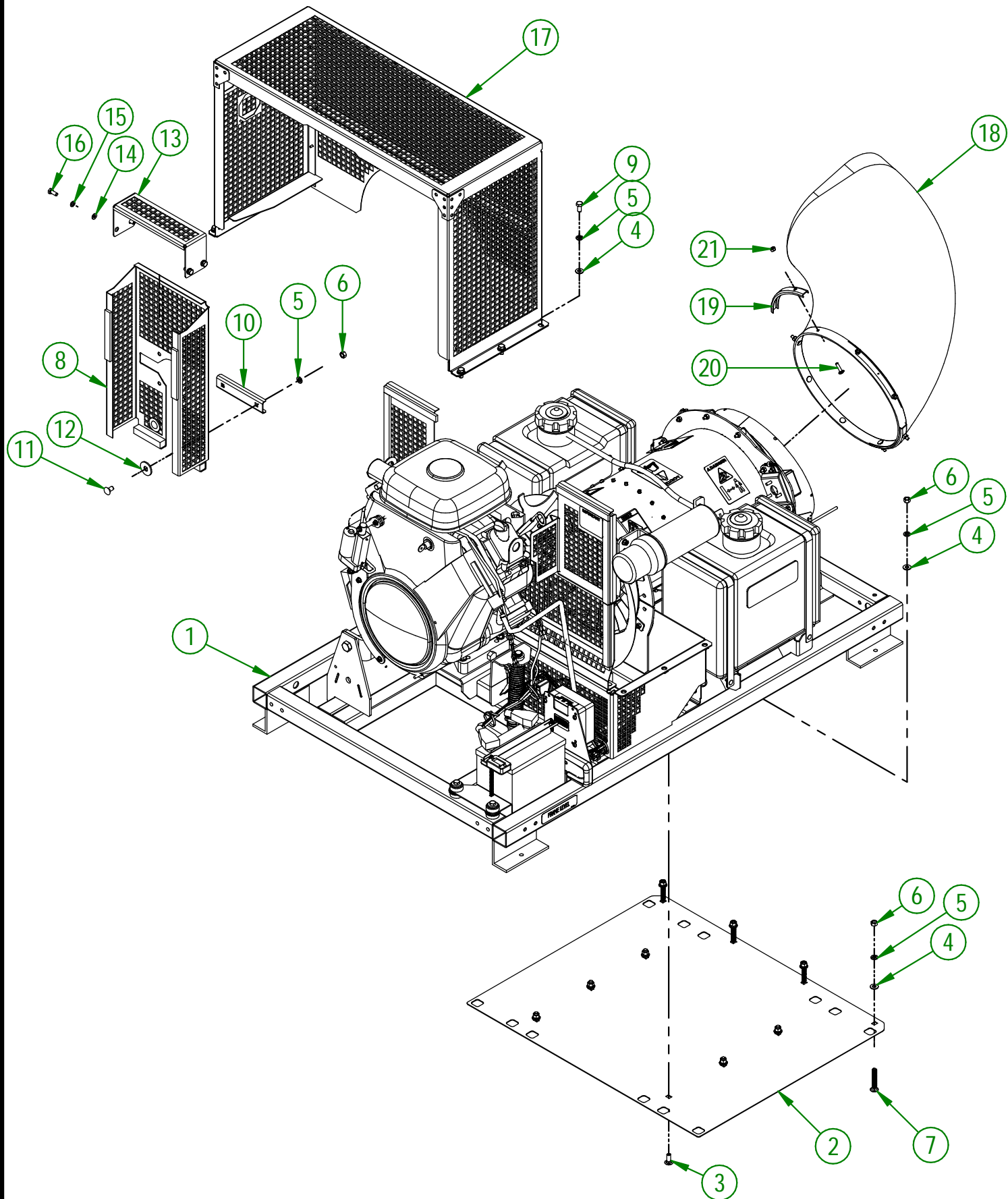


AgriMetal

PART LIST



TURBINE BLOWER 350 IC



AGRIMETAL

TURBINE BLOWER 350 IC

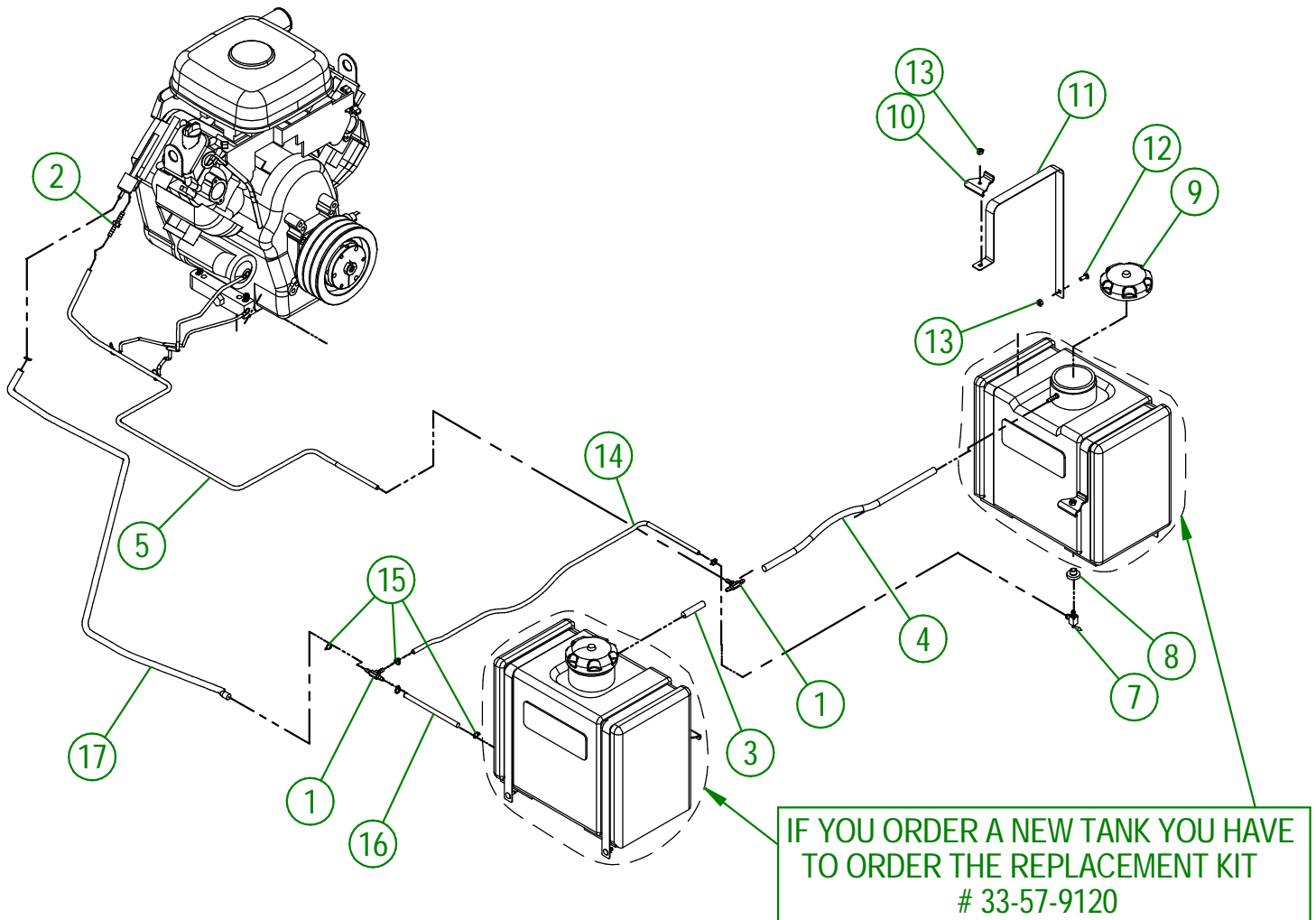
CREATION : 13/10/22
 REVISION : 25/10/22

ASSEMBLY : **33-99-3600**
 AUTHOR : dessin3

33-99-3600

| # | PART # | Qty | TITLE |
|----|--------------|-----|--|
| 1 | 33-57-3500 | 1 | FRAME GROUP |
| 2 | 33-01-3071 | 1 | SCRATCH PLATE |
| 3 | NC01-04-0109 | 6 | CARR. BOLT GR2 ZINC 3/8-16 X 1" |
| 4 | 01-01-2485 | 16 | FLAT WASHER 14 GA X 13/16"OD X 25/64" ID |
| 5 | NC02-32-0012 | 18 | LOCK WASHER ZINC 3/8" |
| 6 | NC02-07-0018 | 12 | HEX. NUT ZINC 3/8-16 |
| 7 | NC01-04-0115 | 4 | CARR. BOLT GR2 ZINC 3/8-16 X 2 1/2" |
| 8 | 33-55-2610 | 1 | BELT GUARD (RIBBON INCLUDED) |
| 9 | NC01-17-0112 | 6 | HEX. BOLT GR2 ZINC 3/8-16 X 3/4" |
| 10 | 33-03-4805 | 1 | BELT GUARD REINFORCING |
| 11 | NC01-04-0107 | 2 | CARR. BOLT GR2 ZINC 3/8-16 X 3/4" |
| 12 | 01-01-1660 | 2 | WASHER SPACER |
| 13 | 33-50-0100 | 1 | STRAP GUARD |
| 14 | NC02-22-0008 | 4 | WASHER ZINC 5/16" |
| 15 | NC02-32-0011 | 4 | LOCK WASHER ZINC 5/16" |
| 16 | NC01-17-0058 | 4 | HEX. BOLT GR2 ZINC 5/16-18 X 3/4" LG |
| 17 | 33-55-0655 | 1 | GRILL (TB350 IC) |
| 18 | 33-42-0005 | 1 | 90° PLASTIC ELBOW |
| 19 | 33-01-2480 | 4 | DUCT CLAMP |
| 20 | NC01-04-0005 | 8 | CARR. BOLT GR2 ZINC 1/4-20 X 1" |
| 21 | NC01-96-0009 | 8 | NYLON-INSERT LOCKNUT ZINC 1/4-20 |

| # | PART # | Qty | TITLE |
|----|--------------|-----|---|
| 1 | NCI3-68-0025 | 2 | T UNION 1/4" DI |
| 2 | NCI3-65-0065 | 1 | BARBED HOSE REDUCER 1/4" X 3/16" |
| 3 | 33-46-0605 | 1 | GAS HOSE VAPOR 1/2" DIA. X 1/4" DI X 2 1/4" EPA |
| 4 | 33-46-0600 | 1 | GAS HOSE VAPOR 1/2" DIA. X 1/4" DI X 19 1/4" EPA |
| 5 | 33-46-0612 | 1 | VAPOR GAS LINE EPA 1/2" DIA. X 1/4" I.D. X 44" LG |
| 6 | NCI3-80-0248 | 2 | GAS TANK |
| 7 | NCI3-80-0266 | 2 | 1/4" ON-OFF GAS VALVE |
| 8 | NCI3-80-0265 | 2 | GROMMET VITRON #46866I |
| 9 | NCI3-80-0247 | 2 | GAS CAP |
| 10 | 33-01-1500 | 4 | GAS TANK STRAP SUPPORT |
| 11 | 33-01-3060 | 4 | GAS TANK STRAP |
| 12 | NC01-04-0002 | 4 | CARR. BOLT GR2 ZINC 1/4-20 X 5/8" |
| 13 | NC01-96-0009 | 8 | NYLON-INSERT LOCKNUT ZINC 1/4-20 |
| 14 | 33-46-0536 | 1 | GAS HOSE 1/4" ID X 1/2" OD X 6" |
| 15 | NC01-65-0201 | 6 | SPRING -GRIP HOSE CLAMPS 1/2" O.D |
| 16 | 33-46-0537 | 1 | GAS HOSE 1/4" ID X 1/2" OD X 32" |
| 17 | 33-46-0665 | 1 | GAS HOSE 1/4" ID X 1/2" OD X 39" |



USE THESE PIECES ONLY IF YOUR SERIAL
NUMBER IS AFFECTED:

45646 & UNDER

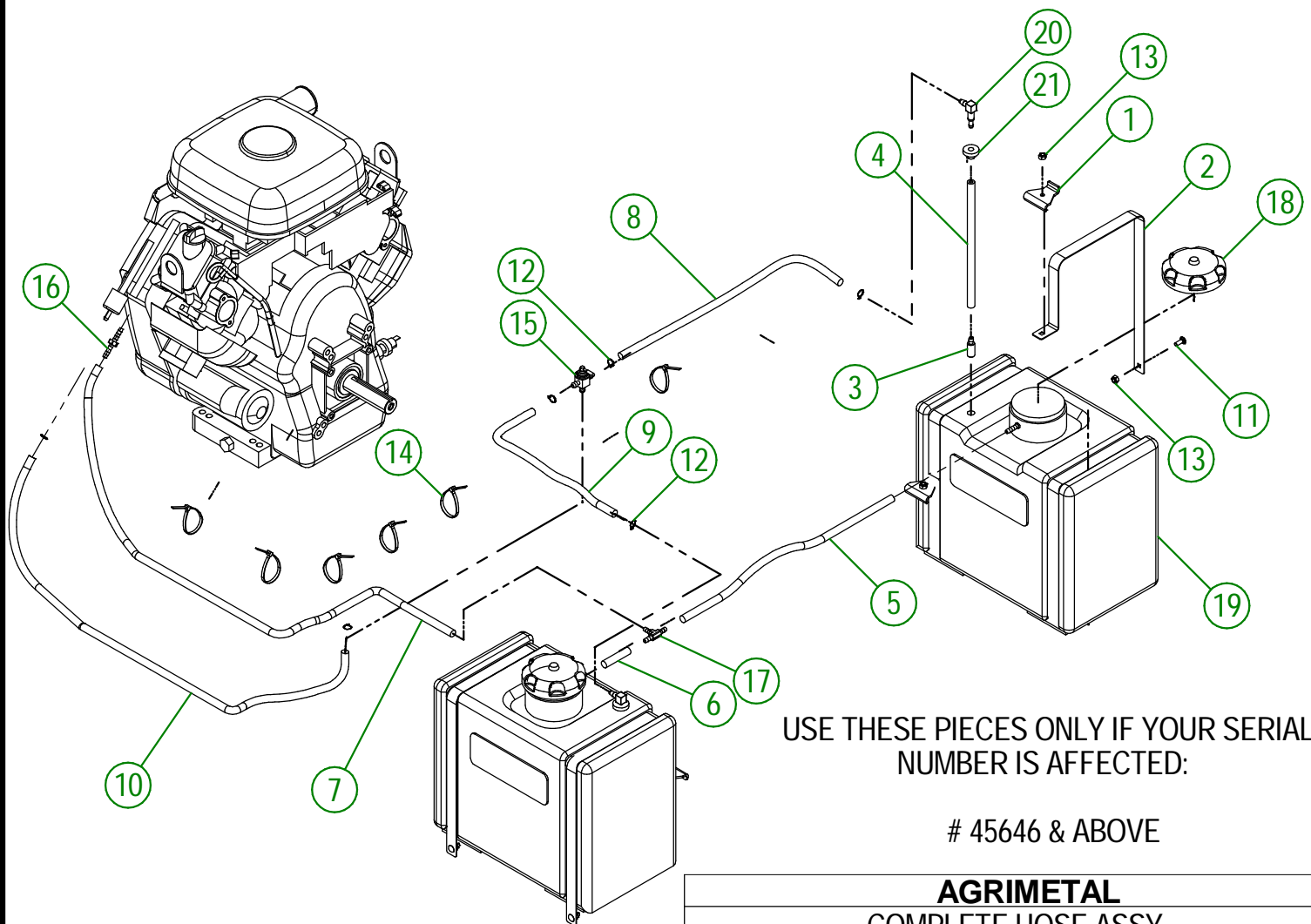
AGRIMETAL

TURBINE BLOWER 350 IC

CREATION : 13/10/22
REVISION : 30/05/24

ASSEMBLY : **33-99-3600**
AUTHOR : D. CHASSÉ

| # | PART # | Qty | TITLE |
|----|--------------|-----|---|
| 1 | 33-01-1500 | 4 | GAS TANK STRAP SUPPORT |
| 2 | 33-01-3060 | 4 | GAS TANK STRAP |
| 3 | 33-13-0015 | 2 | GAZ LINE WEIGH |
| 4 | 33-46-0035 | 2 | 1/4" GAZ LINE X 12" LG |
| 5 | 33-46-0600 | 1 | GAS HOSE VAPOR 1/2" DIA. X 1/4" DI X 19 1/4" EPA |
| 6 | 33-46-0605 | 1 | GAS HOSE VAPOR 1/2" DIA. X 1/4" DI X 2 1/4" EPA |
| 7 | 33-46-0612 | 1 | VAPOR GAS LINE EPA 1/2" DIA. X 1/4" I.D. X 44" LG |
| 8 | 33-46-0700 | 1 | 1/4" GAS LINE X 23" LG |
| 9 | 33-46-0705 | 1 | 1/4" GAS LINE X 11 1/2" LG |
| 10 | 33-46-0710 | 1 | 1/4" GAS LINE X 29" LG |
| 11 | NC01-04-0002 | 4 | CARR. BOLT GR2 ZINC 1/4-20 X 5/8" |
| 12 | NC01-65-0201 | 6 | SPRING -GRIP HOSE CLAMPS 1/2" O.D |
| 13 | NC01-96-0009 | 8 | NYLON-INSERT LOCKNUT ZINC 1/4-20 |
| 14 | NC13-25-0019 | 6 | BLACK TIE RAP |
| 15 | NC13-37-0689 | 1 | 1/4" 3 WAY VALVE |
| 16 | NC13-65-0065 | 1 | BARBED HOSE REDUCER 1/4" X 3/16" |
| 17 | NC13-68-0025 | 1 | T UNION 1/4" DI |
| 18 | NC13-80-0247 | 2 | GAS CAP |
| 19 | NC13-80-0321 | 2 | GAS TANK |
| 20 | NC13-80-0323 | 2 | 90° ELBOW X 1/4" GAS LINE |
| 21 | NC13-80-0324 | 2 | GROMMET VITRON |



USE THESE PIECES ONLY IF YOUR SERIAL NUMBER IS AFFECTED:

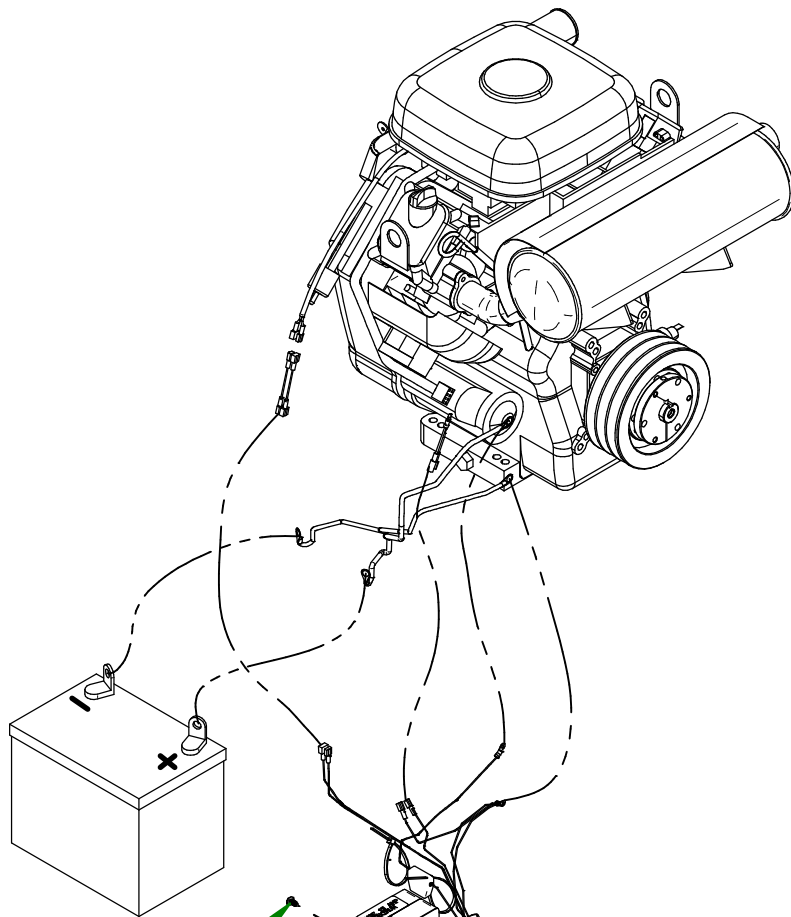
45646 & ABOVE

AGRIMETAL
COMPLETE HOSE ASSY

CREATION : 30/05/24
REVISION : 30/05/24

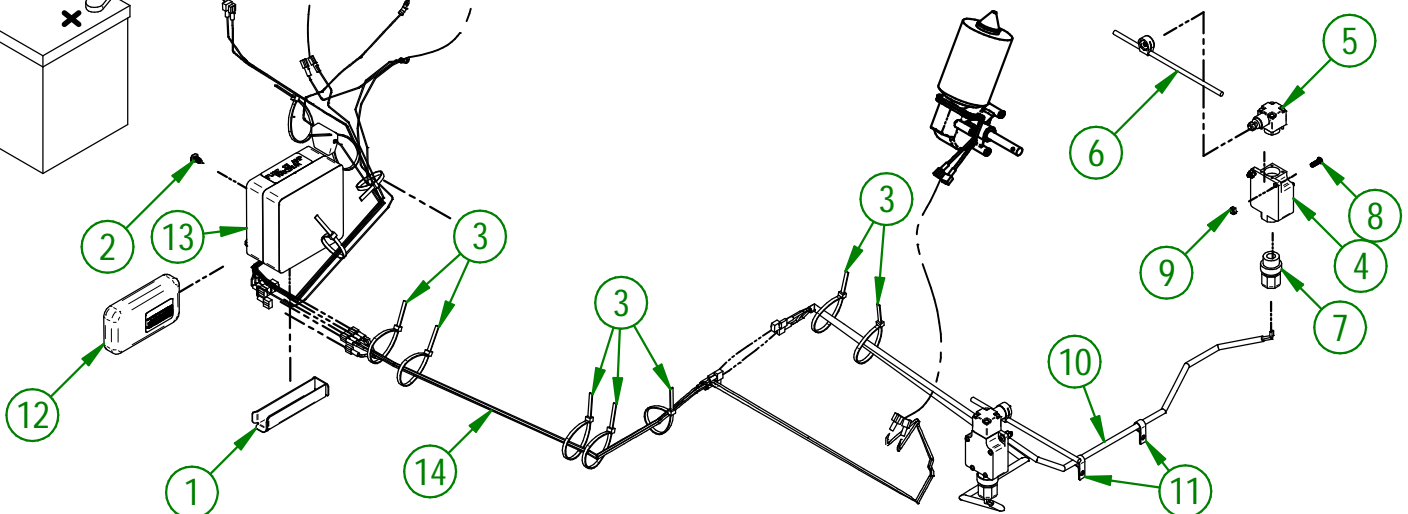
ASSEMBLY : **33-57-0720**
AUTHOR : D. CHASSÉ

| # | PART # | QTY | TITLE |
|----|--------------|-----|--|
| 1 | 33-22-2240 | 1 | WIRE PROTECTOR |
| 2 | NC02-42-0096 | 4 | PHILLIPS SCREW ZINC #14 X 5/8" |
| 3 | NC13-25-0019 | 11 | BLACK TIE RAP |
| 4 | NC13-25-0251 | 2 | MICRO SWITCH BODY |
| 5 | NC13-25-0252 | 2 | MICRO SWITCH HEAD |
| 6 | NC13-25-0253 | 2 | MICRO SWITCH ROD ADAPTOR |
| 7 | NC13-25-0012 | 2 | CONNECTOR "SKINTIGHT" (NYLON) 1/2 NPT X 0.200-0.470" |
| 8 | NC02-40-0081 | 4 | SCREW ZINC 10-24 X 5/8" |
| 9 | NC01-96-0006 | 4 | NYLON NUT ZINC 3/16 |
| 10 | 33-55-0515 | 1 | 18 GA ELECTRIC WIRE 600V (MICRO SWITCH) ASSY. |
| 11 | NC13-25-0233 | 2 | VINYLE PROTECTOR COLLAR |
| 12 | NC13-25-0372 | 1 | MANETTE TB-230 (NEW STYLE) |
| 13 | NC13-25-0370 | 1 | ELECTRIC BOX TB 380 |
| 14 | NC13-25-0375 | 1 | 67" NEW BOX WIRE |



USE THESE PIECES ONLY IF YOUR SERIAL NUMBER IS AFFECTED:

#45955 AND BELOW

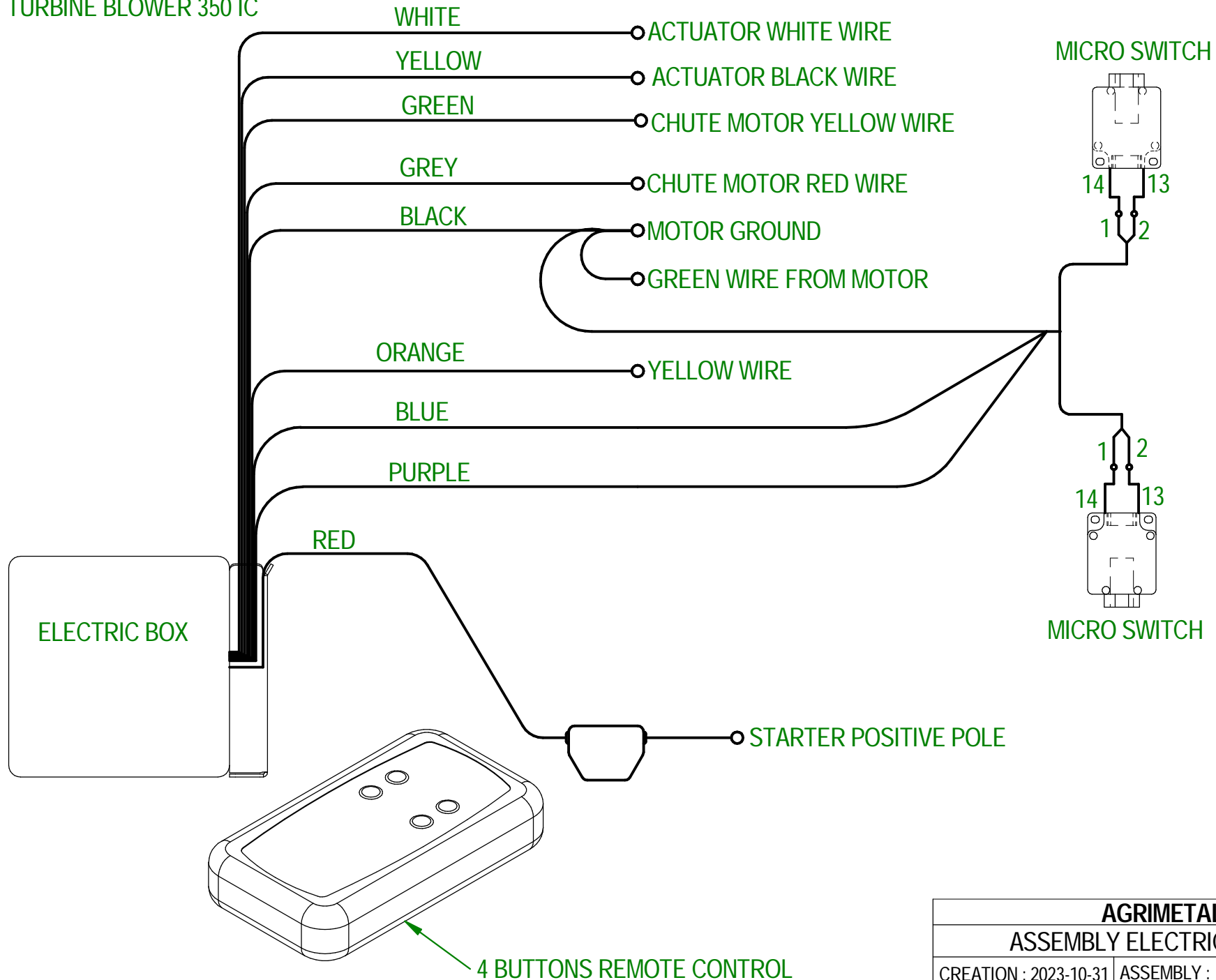


AGRIMETAL
ELECTRIC WIRE GROUP.

CREATION : 26/06/24
REVISION : 26/06/24

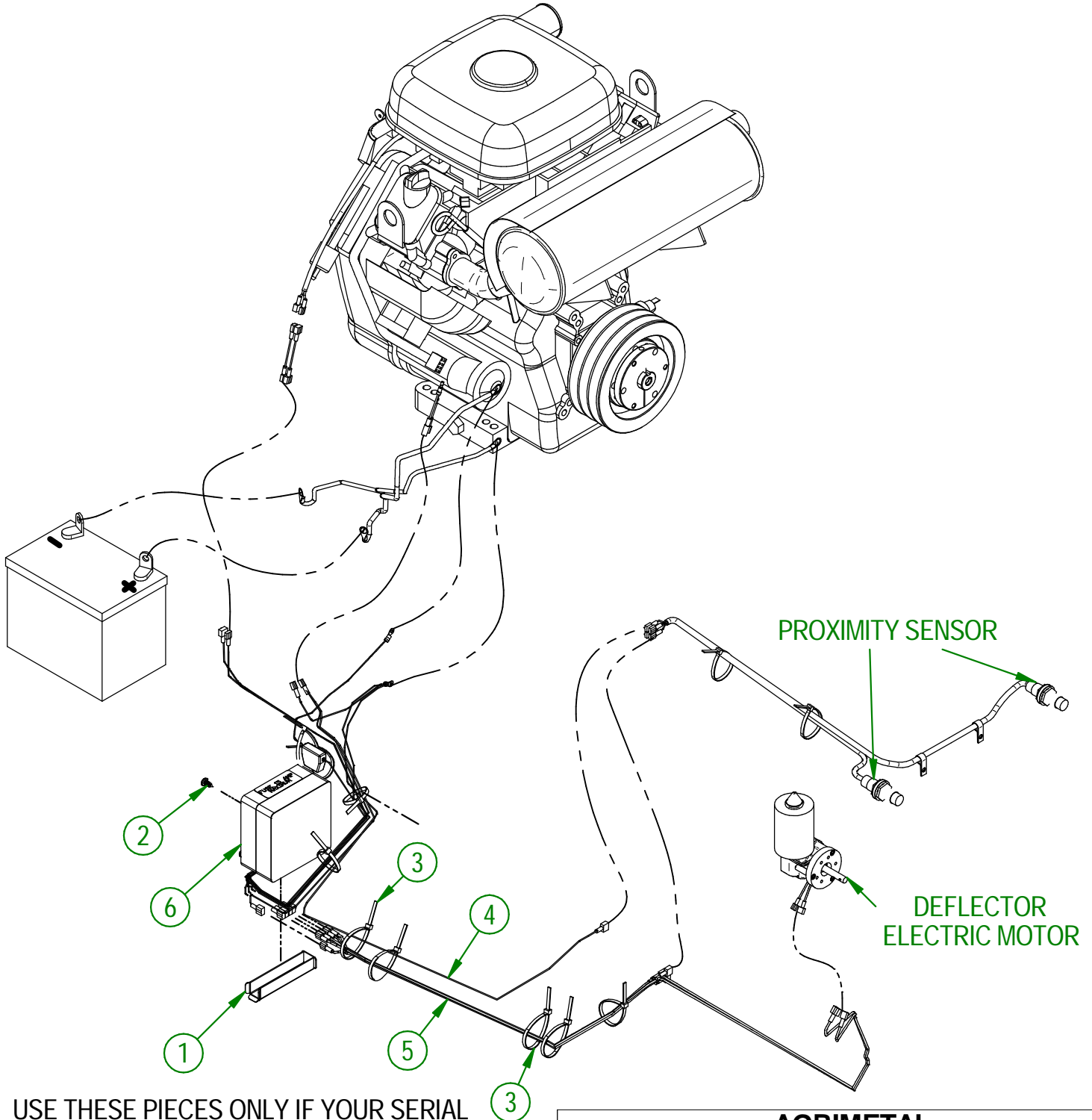
ASSEMBLY : **33-57-0655**
AUTHOR : D. CHASSÉ

TURBINE BLOWER 270 IC
TURBINE BLOWER 350 IC



| | |
|----------------------------------|------------------------------|
| AGRIMETAL | |
| ASSEMBLY ELECTRIC CONTROL | |
| CREATION : 2023-10-31 | ASSEMBLY : 33-57-0506 |
| REVISION : 2024-02-12 | AUTHOR : D. CHASSÉ |

| # | PART # | QTY | TITLE |
|---|--------------|-----|------------------------------------|
| 1 | 33-22-2240 | 1 | WIRE PROTECTOR |
| 2 | NC02-42-0096 | 4 | PHILLIPS SCREW ZINC #14 X 5/8" |
| 3 | NC13-25-0019 | 9 | BLACK TIE RAP |
| 4 | 33-55-0620 | 1 | 16 GA WIRE ASSY (PROXIMITY SENSOR) |
| 5 | NC13-25-0375 | 1 | 67" NEW BOX WIRE |
| 6 | NC13-25-0370 | 1 | ELECTRIC BOX TB 380 |



USE THESE PIECES ONLY IF YOUR SERIAL NUMBER IS AFFECTED:

#45956 AND ABOVE

| | |
|---------------------------|------------------------------|
| AGRIMETAL | |
| ASSEMBLY ELECTRIC CONTROL | |
| CREATION : 27/06/24 | ASSEMBLY : 33-57-0507 |
| REVISION : 27/06/24 | AUTHOR : D. CHASSÉ |

TURBINE BLOWER 270 IC-2
TURBINE BLOWER 350 IC-2

WHITE
YELLOW
GREEN
GREY

ACTUATOR WHITE WIRE
ACTUATOR BLACK WIRE
CHUTE MOTOR YELLOW WIRE
CHUTE MOTOR RED WIRE

BLACK
MOTOR GROUND
GREEN WIRE FROM MOTOR

ORANGE
RED WIRE
YELLOW WIRE

PURPLE
BLUE

RED

ELECTRIC BOX

STARTER POSITIVE POLE

PROXIMITY SENSOR (RIGHT)

BLACK WIRE
BLUE WIRE
BROWN WIRE
BLACK WIRE
BLUE WIRE
BROWN WIRE

PROXIMITY SENSOR (LEFT)

4 BUTTONS REMOTE CONTROL

AGRIMETAL

ASSEMBLY ELECTRIC BOX

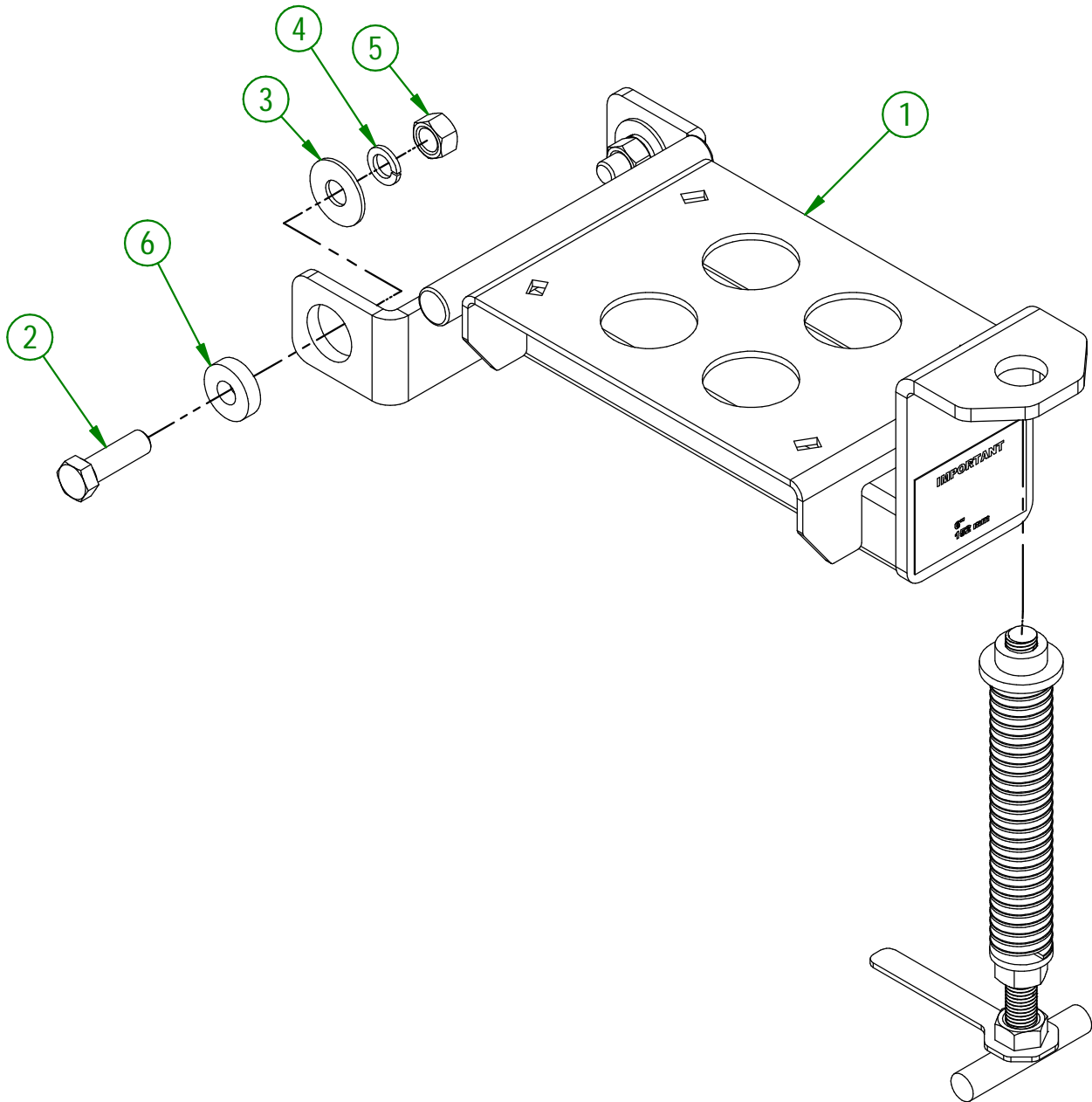
CREATION : 2024-06-21

ASSEMBLY : **33-57-0507**

REVISION : 2024-06-27

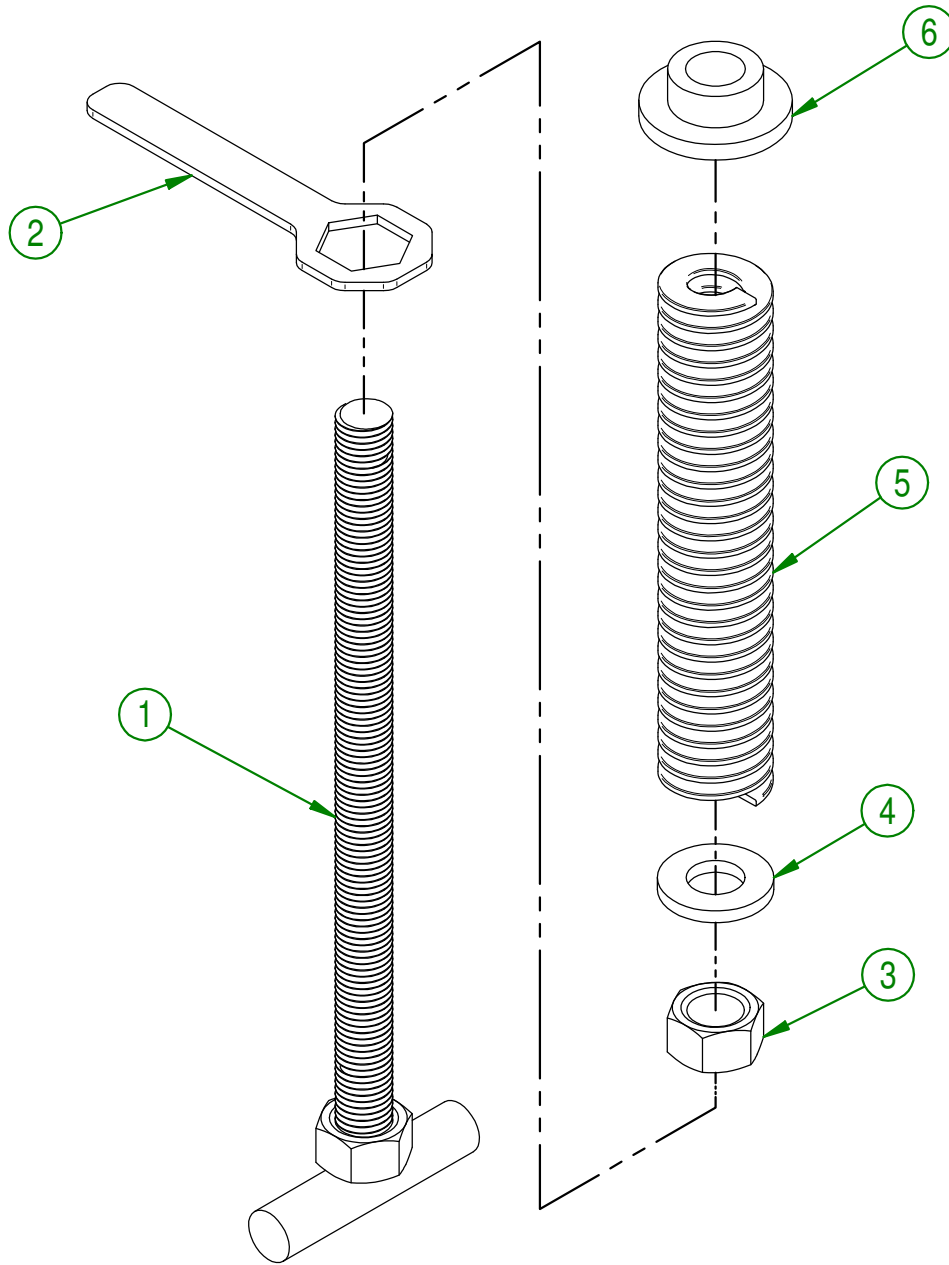
AUTHOR : D. CHASSÉ

| # | PART # | Qty | TITLE |
|---|--------------|-----|---------------------------------|
| 1 | 33-50-0505 | 1 | ENGINE BASE |
| 2 | NC01-17-0396 | 2 | HEX. BOLT GR2 ZINC 5/8-11 X 2" |
| 3 | NC02-22-0014 | 2 | WASHER ZINC 11/16 ID X 1 3/4 OD |
| 4 | NC02-32-0016 | 2 | LOCK WASHER ZINC 5/8" |
| 5 | NC02-07-0022 | 2 | HEX. NUT ZINC 5/8-11 |
| 6 | 33-13-0005 | 2 | ENGINE BASE BUSHING |

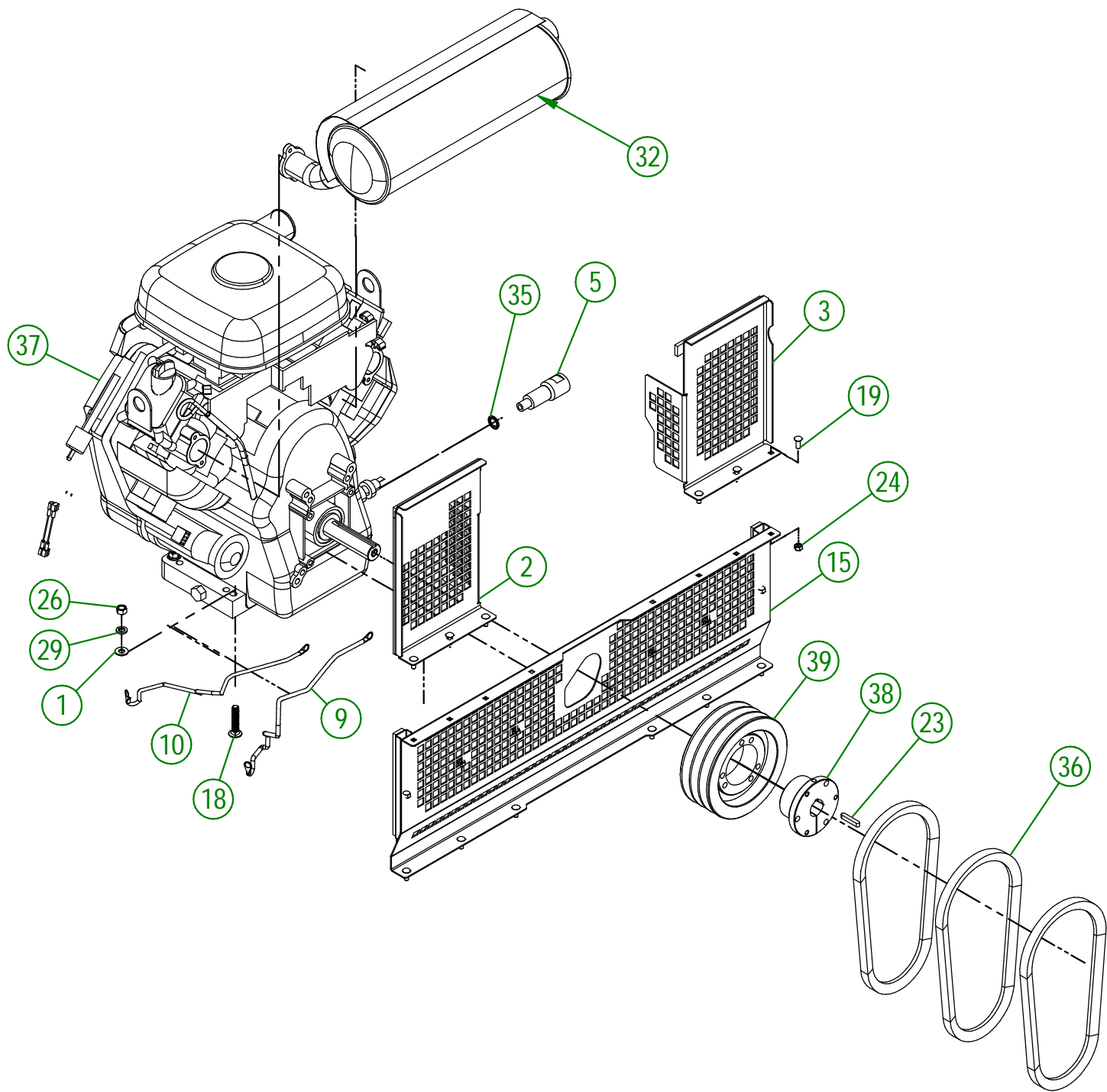


| | |
|---------------------------|------------------------------|
| AGRIMETAL | |
| ENGINE BASE GROUP. | |
| CREATION : 14/11/17 | ASSEMBLY : 33-57-0585 |
| REVISION : 26/09/23 | AUTHOR : J.KABWE |

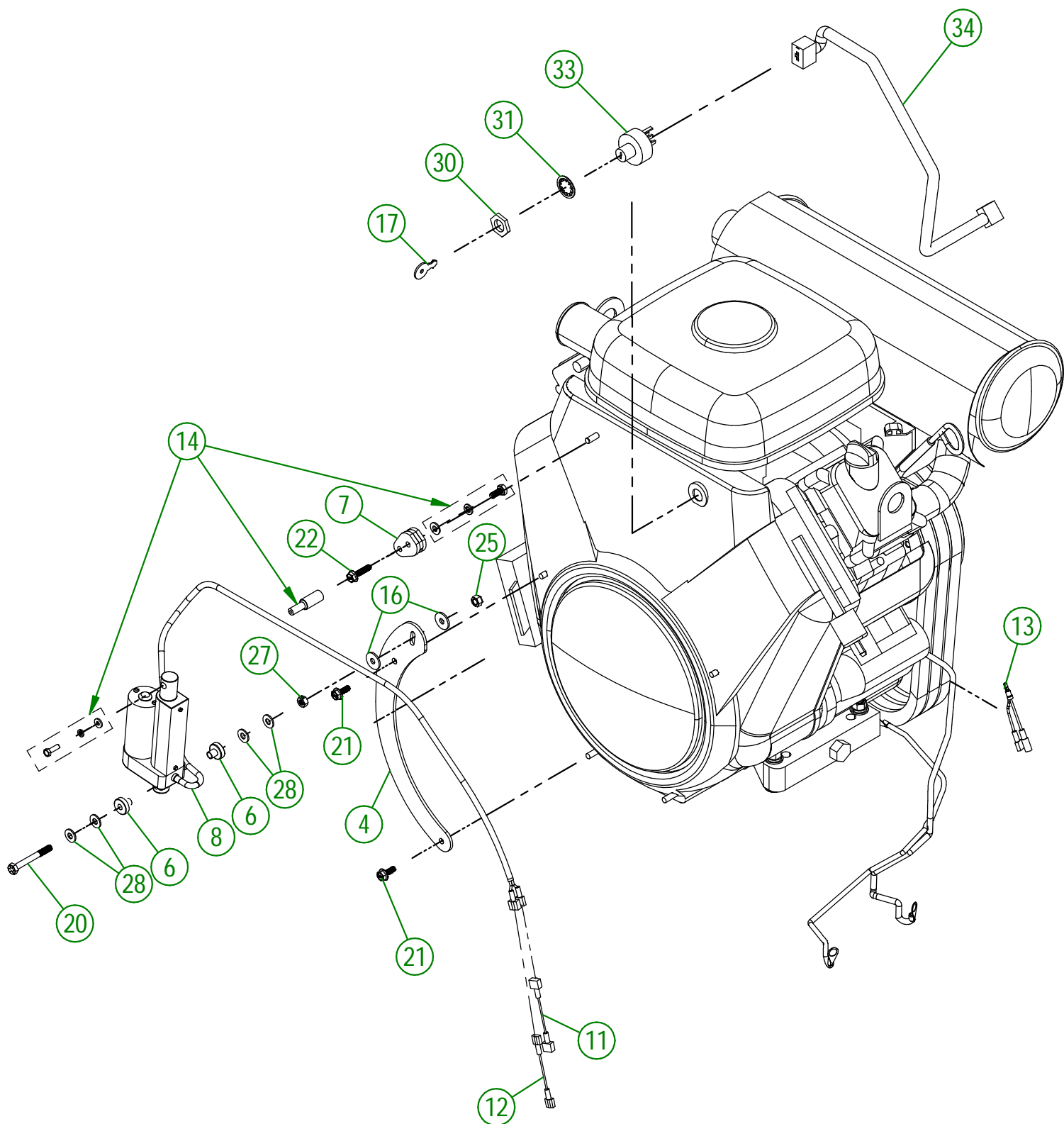
| # | PART # | Qty | TITLE |
|---|--------------|-----|----------------------------------|
| 1 | 33-50-0570 | 1 | BELT TENSION |
| 2 | 33-01-0975 | 1 | TENSIONNER KEY |
| 3 | NC02-07-0023 | 1 | HEX. NUT ZINC 3/4-10 |
| 4 | 22-04-6805 | 1 | FLAT WASHER BEARING BASE |
| 5 | NC13-86-0083 | 1 | BLUE SPRING 1/2" ID X 1" OD X 4" |
| 6 | 33-42-0110 | 1 | TENSIONNER GUIDE |



| | |
|------------------------------|---------------------------------|
| AGRIMETAL | |
| ASSEMBLY BELT TENSION | |
| CREATION : 09/11/17 | ASSEMBLY : 33-57-0586 |
| REVISION : 08/01/18 | AUTHOR : J.KABWE Page 8 de 20 |



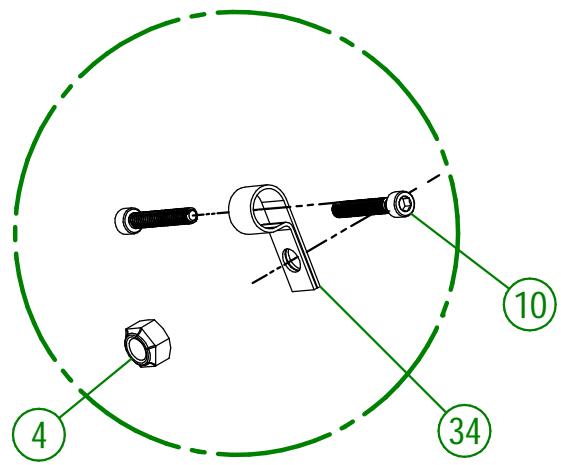
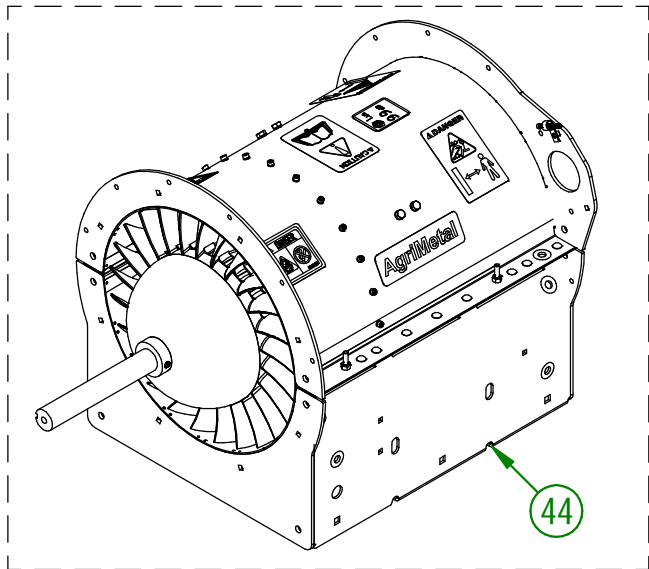
| | |
|--------------------------------------|------------------------------|
| AGRIMETAL | |
| ASSEMBLY VANGUARD ENGINE 35HP | |
| CREATION : 06/10/22 | ASSEMBLY : 33-57-0545 |
| REVISION : 04/06/24 | AUTHOR : D. CHASSÉ |



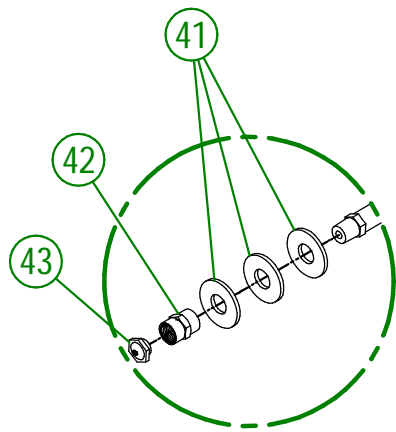
| | |
|--------------------------------------|------------------------------|
| AGRIMETAL | |
| ASSEMBLY VANGUARD ENGINE 35HP | |
| CREATION : 06/10/22 | ASSEMBLY : 33-57-0545 |
| REVISION : 04/06/24 | AUTHOR : D. CHASSÉ |

33-57-0545

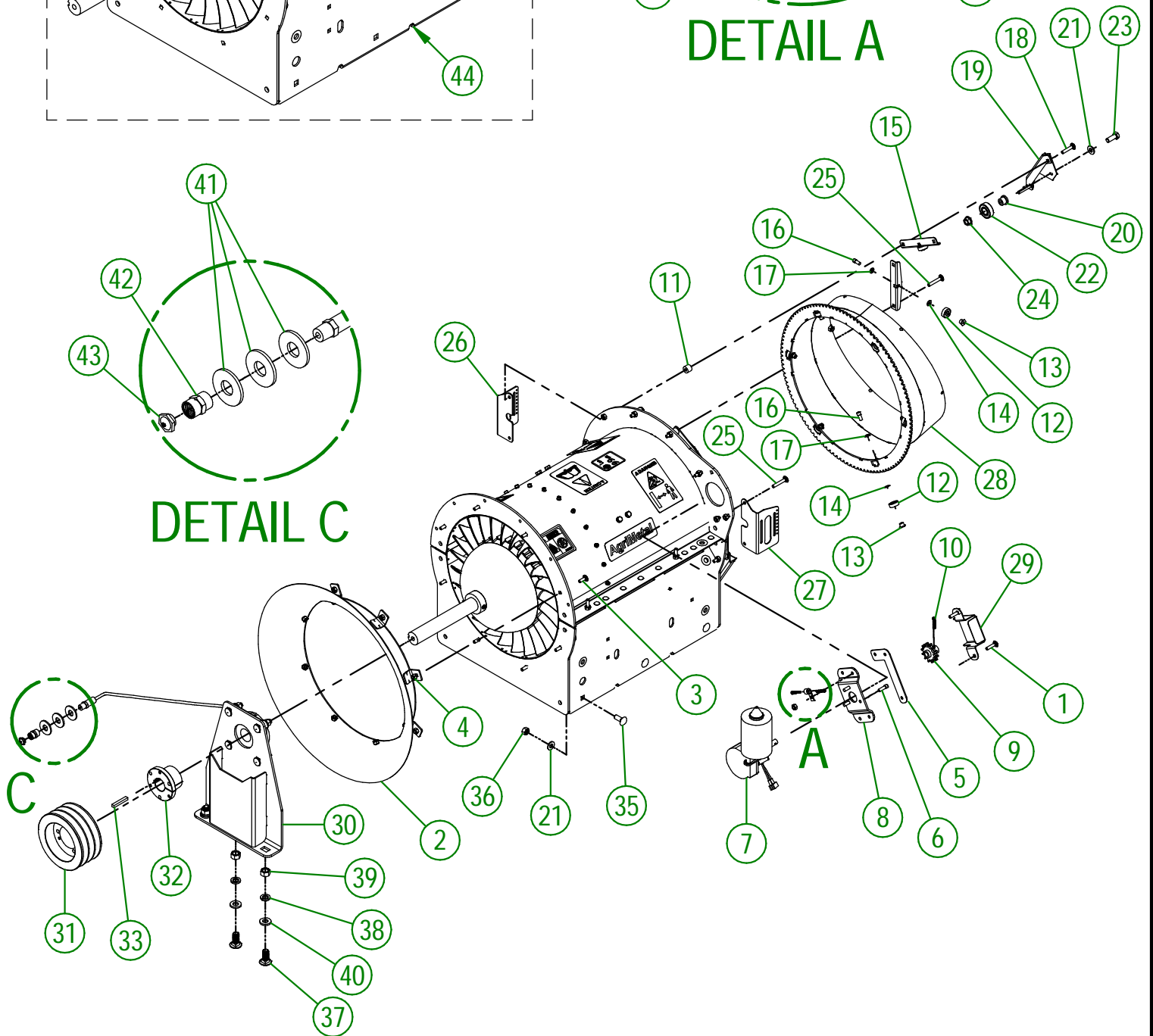
| # | PART # | Qty | TITLE |
|----|---------------|-----|---|
| 1 | 01-01-2485 | 8 | FLAT WASHER 14 GA X 13/16"OD X 25/64" ID |
| 2 | 33-01-0065 | 1 | MUFFLER GUARD |
| 3 | 33-01-0075 | 1 | LEFT MUFFLER GUARD |
| 4 | 33-01-0206 | 1 | ACTUATOR SUPPORT |
| 5 | 33-21-0125 | 1 | MOTOR DRAIN EXTENSION |
| 6 | 33-42-0120 | 2 | PIVOT BUSHING |
| 7 | 33-50-0200 | 1 | ACTUATOR PIVOT LEVER |
| 8 | 33-55-0100 | 1 | PRE-ASS ACTUATOR 12V |
| 9 | 33-55-0506 | 1 | POSITIVE CABLE (14" LG) |
| 10 | 33-55-0511 | 1 | NEGATIVE CABLE (16" LG) |
| 11 | 33-55-0610 | 1 | 16 GA YELLOW CABLE X 2" ASSY. |
| 12 | 33-55-0615 | 1 | 16 GA WHITE CABLE X 2" ASSY. |
| 13 | 33-55-0650 | 1 | 16 GA BLACK CABLE (Y FOR RECEIVER) HONDA |
| 14 | 33-57-0107 | 1 | ACTION ROD |
| 15 | 33-57-0590 | 1 | ASSEMBLY BOTTOM ENGINE GUARD |
| 16 | 36-01-2430 | 2 | FLAT WASHER 14GA X 17/64" I.D. X 13/16" O.D. |
| 17 | NC-13-37-0675 | 1 | KEY SET |
| 18 | NC01-02-0113 | 4 | CARR. BOLT GR2 ZINC 3/8-16 X 2" |
| 19 | NC01-04-0002 | 6 | CARR. BOLT GR2 ZINC 1/4-20 X 5/8" |
| 20 | NC01-37-0011 | 1 | HEX. BOLT GR8 1/4-28 X 2 1/4 |
| 21 | NC01-50-1172 | 2 | STEEL FLANGED HEX HEAD SCREW M6 X 0.75 X 16MM LG. |
| 22 | NC01-50-1172 | 1 | STEEL FLANGED HEX HEAD SCREW M6 X 0.75 X 25MM LG |
| 23 | NC01-65-0087 | 1 | KEY 1/4 X 1/4 X 1 1/2" |
| 24 | NC01-96-0009 | 6 | NYLON-INSERT LOCKNUT ZINC 1/4-20 |
| 25 | NC01-97-0004 | 1 | NYLON-INSERT LOCKNUT ZINC 1/4-28 |
| 26 | NC02-07-0018 | 4 | HEX. NUT ZINC 3/8-16 |
| 27 | NC02-14-1200 | 1 | TWO WAY LOCK NUT 1/4-28 |
| 28 | NC02-25-0007 | 4 | WASHER ZINC 0.281 = 9/32 |
| 29 | NC02-32-0012 | 8 | LOCK WASHER ZINC 3/8" |
| 30 | NC13-37-0674 | 1 | HEX NUT |
| 31 | NC13-37-0676 | 1 | LOCK WASHER |
| 32 | NC13-37-0677 | 1 | 35 HP VANGUARD MUFFLER |
| 33 | NC13-37-0678 | 1 | IGNITION SWITCH |
| 34 | NC13-37-0679 | 1 | WIRE HARNESS ASS'Y |
| 35 | NC13-45-0392 | 1 | METAL BOND SEALING WASHER 13.7MM ID X22.4MM OD |
| 36 | NC14-25-1070 | 3 | V BELT 21/32 COGGED RAW EDGE BX-31 |
| 37 | NC14-40-0051 | 1 | VANGUARD ENGINE 35 HP ELECTRIC START |
| 38 | NC14-62-0004 | 1 | QD BUSHING SD 1 1/8 |
| 39 | NC14-62-0220 | 1 | PULLEY QD 3V 1/2-5/8 X 6.75 OD X SD 3B64 |



DETAIL A



DETAIL C



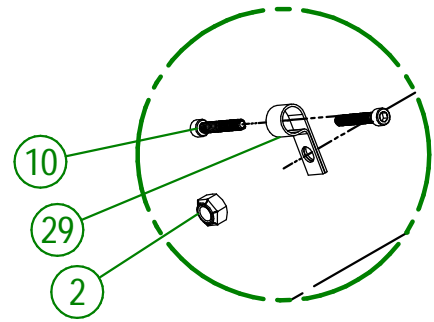
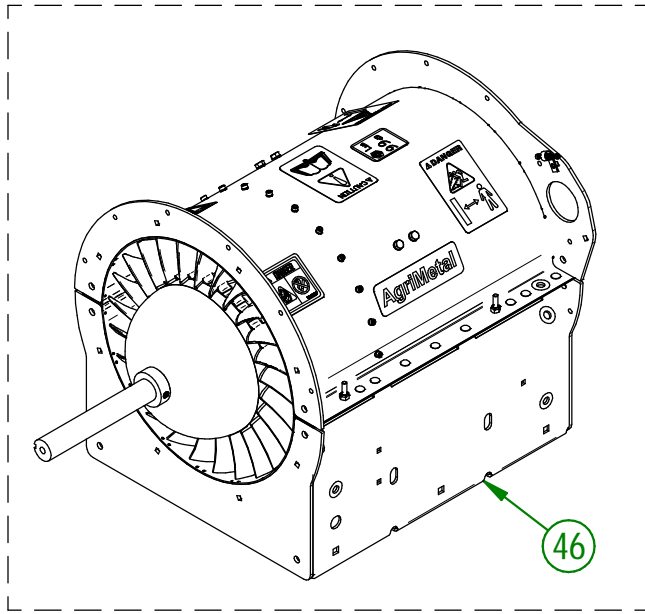
USE THESE PIECES ONLY IF YOUR SERIAL NUMBER IS AFFECTED:

#45955 AND BELOW

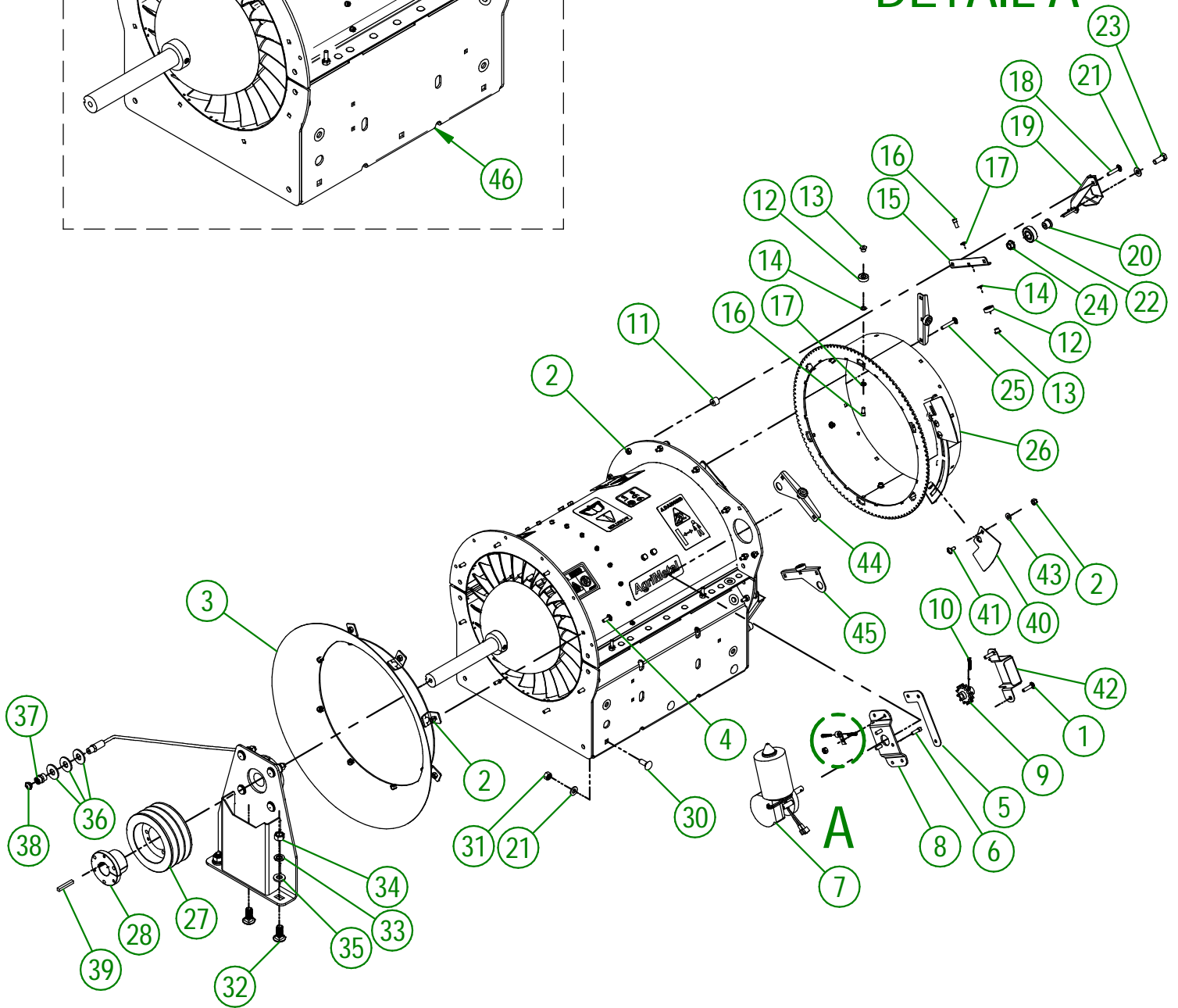
| | |
|-------------------------|------------------------------|
| AGRIMETAL | |
| ASSEMBLY TURBINE | |
| CREATION : 28/06/24 | ASSEMBLY : 33-57-0521 |
| REVISION : 28/06/24 | AUTHOR : J.KABWE |

33-57-0521

| # | PART # | QT | TITLE |
|----|--------------|----|--|
| 1 | NC01-04-0005 | 6 | CARR. BOLT GR2 ZINC 1/4-20 X 1" |
| 2 | 33-55-0085 | 1 | AIR INTAKE ASSY. |
| 3 | NC01-04-0003 | 8 | CARR. BOLT GR2 ZINC 1/4-20 X 3/4" |
| 4 | NC01-96-0009 | 23 | NYLON-INSERT LOCKNUT ZINC 1/4-20 |
| 5 | 33-01-2500 | 1 | ELECTRIC ENGINE SHIM |
| 6 | NC02-51-0080 | 3 | SOCKET CAP SCREW T. RON 1/4-28 X 3/4" |
| 7 | 33-55-0045 | 1 | DEFLECTOR ELECTRIC ENGINE |
| 8 | 33-01-0933 | 1 | ELECTRIC ENGINE SUPPORT |
| 9 | 33-55-0035 | 1 | GEARED CROWN SPROCKET |
| 10 | NC02-50-0069 | 3 | SOCKET CAP SCREW T. RON 8-32 X 1" |
| 11 | 33-21-0080 | 12 | SPACER |
| 12 | NC14-75-0153 | 12 | BALL BEARING R6 2RS 3/8" X 7/8" X 0.281" |
| 13 | 33-25-2410 | 12 | BEARING BUSHING |
| 14 | 33-03-4605 | 12 | BEARING SHIM 1/4" ALUMINUM |
| 15 | 33-01-2425 | 6 | BEARING HOLDER BRACKET |
| 16 | NC02-51-0578 | 12 | SOCKET CAP SCREW T. RON. NF 1/4-28 X 1/2 STAINLESS |
| 17 | NC02-32-0010 | 12 | LOCK WASHER ZINC 1/4" |
| 18 | NC01-04-0006 | 7 | CARR. BOLT GR2 ZINC 1/4-20 X 1 1/4" |
| 19 | 33-50-0555 | 3 | WELD ASSEMBLY BEARING SUPPORT |
| 20 | 33-21-0060 | 3 | BEARING HOLDER |
| 21 | 01-01-2485 | 9 | FLAT WASHER 14 GA X 13/16"OD X 25/64" ID |
| 22 | NC14-75-0068 | 3 | BALL BEARING 99502H |
| 23 | NC01-17-0114 | 3 | HEX. BOLT GR2 ZINC 3/8-16 X 1" |
| 24 | NC02-14-0019 | 3 | FLANGE NUT HEX. NC 3/8-16 GR. B |
| 25 | NC01-04-0007 | 5 | CARR. BOLT GR2 ZINC 1/4-20 X 1 1/2" |
| 26 | 33-01-2450 | 1 | RIGHT MICRO SWITCH SUPPORT |
| 27 | 33-01-2452 | 1 | LEFT MICRO SWITCH SUPPORT |
| 28 | 33-50-0515 | 1 | WELD ASSEMBLY CROWN DEFLECTOR |
| 29 | 33-01-3095 | 1 | SPROCKET GUARD |
| 30 | 33-55-0590 | 1 | BEARING SUPPORT |
| 31 | NC14-62-0201 | 1 | PULLEY QD 3V 1/2-5/8 X 5.55 OD X SD 3B52 |
| 32 | NC14-62-0005 | 1 | QD BUSHING SD 1 1/4" |
| 33 | 33-41-0920 | 1 | SQUARE KEY |
| 34 | NC13-25-0233 | 1 | VINYLE PROTECTOR COLLAR |
| 35 | NC01-04-0109 | 6 | CARR. BOLT GR2 ZINC 3/8-16 X 1" |
| 36 | NC01-93-0011 | 6 | LOCK NUT 3/8-16 |
| 37 | NC01-04-0234 | 3 | CARR. BOLT GR2 ZINC 1/2-13 X 1 1/4 |
| 38 | NC02-32-0014 | 3 | LOCK WASHER ZINC 1/2" |
| 39 | NC02-07-0020 | 3 | HEX. NUT ZINC 1/2-13 |
| 40 | 01-01-0925 | 3 | WASHER |
| 41 | NC02-22-0012 | 3 | WASHER ZINC 1/2 BOLT = 9/16"Ø X 1 3/8" OD |
| 42 | NC13-65-0001 | 1 | UNION 1/4" NPT X 7/8" |
| 43 | NC01-69-0798 | 1 | GREASE FITTING 1/4" NPT X RIGHT |
| 44 | 33-57-0527 | 1 | TRUBINE 380 IC (NEW) |



DETAIL A



USE THESE PIECES ONLY IF YOUR SERIAL NUMBER IS AFFECTED:

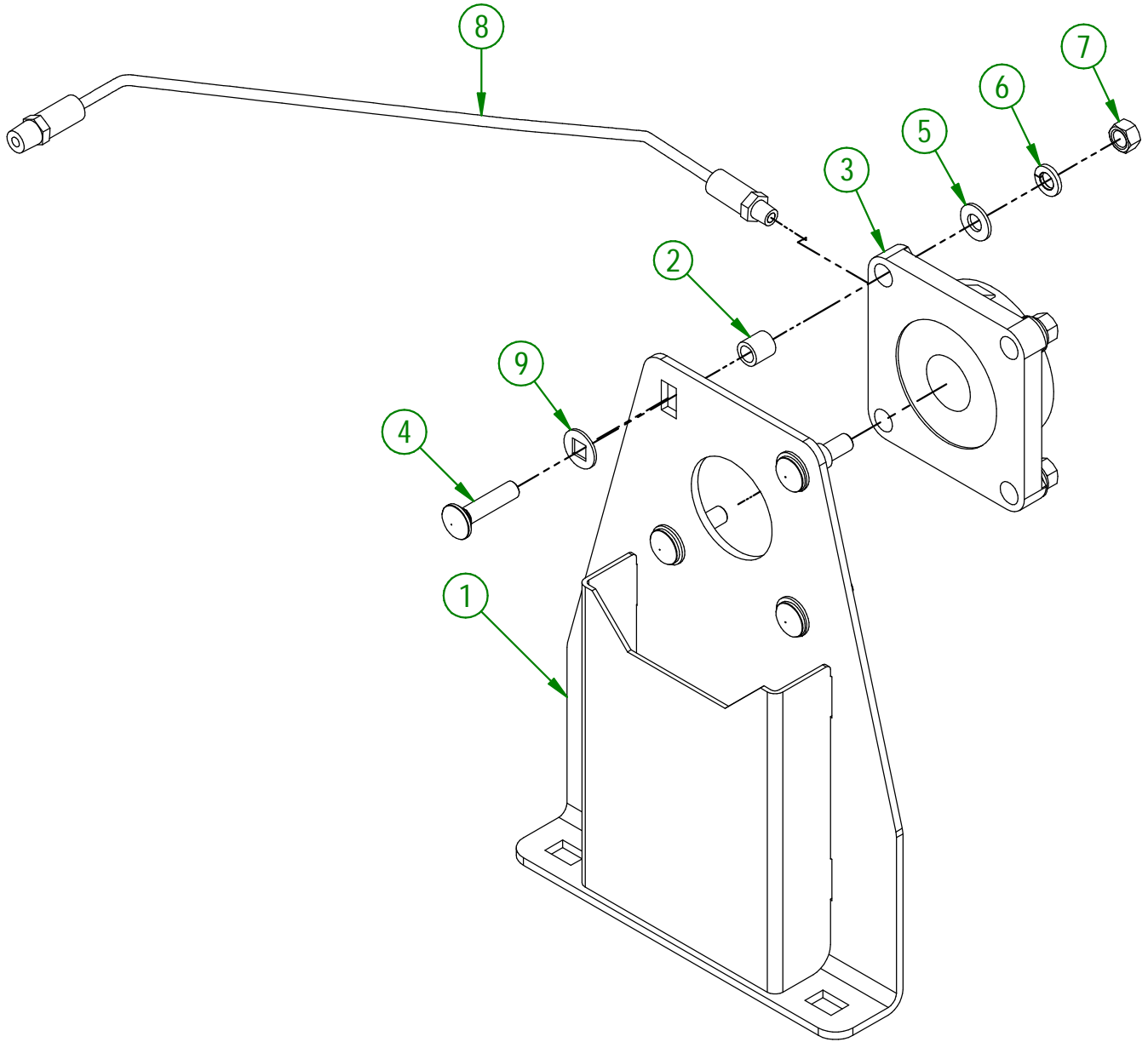
#45956 AND ABOVE

| | |
|-------------------------|------------------------------|
| AGRIMETAL | |
| ASSEMBLY TURBINE | |
| CREATION : 28/06/24 | ASSEMBLY : 33-57-0522 |
| REVISION : 28/06/24 | AUTHOR : J.KABWE |

33-57-0535

| # | PART # | QTY | TITLE |
|----|--------------|-----|---|
| 1 | NC01-04-0005 | 6 | CARR. BOLT GR2 ZINC 1/4-20 X 1" |
| 2 | NC01-96-0009 | 48 | NYLON-INSERT LOCKNUT ZINC 1/4-20 |
| 3 | 33-55-0085 | 1 | AIR INTAKE ASSY. |
| 4 | NC01-04-0003 | 8 | CARR. BOLT GR2 ZINC 1/4-20 X 3/4" |
| 5 | 33-01-2500 | 1 | ELECTRIC ENGINE SHIM |
| 6 | NC02-51-0080 | 3 | SOCKET CAP SCREW T.RON 1/4-28 X 3/4" |
| 7 | 33-55-0045 | 1 | DEFLECTOR ELECTRIC ENGINE |
| 8 | 33-01-0933 | 1 | ELECTRIC ENGINE SUPPORT |
| 9 | 33-55-0035 | 1 | GEARED CROWN SPROCKET |
| 10 | NC02-50-0069 | 3 | SOCKET CAP SCREW T.RON 8-32 X 1" |
| 11 | 33-21-0080 | 12 | SPACER |
| 12 | NC14-75-0153 | 10 | BALL BEARING R6 2RS 3/8" X 7/8" X 0.281" |
| 13 | 33-25-2410 | 10 | BEARING BUSHING |
| 14 | 33-03-4605 | 10 | BEARING SHIM 1/4" ALUMINUM |
| 15 | 33-01-2425 | 4 | BEARING HOLDER BRACKET |
| 16 | NC02-51-0578 | 10 | SOCKET CAP SCREW T.RON. NF 1/4-28 X 1/2 STAINLESS |
| 17 | NC02-32-0010 | 10 | LOCK WASHER ZINC 1/4" |
| 18 | NC01-04-0006 | 7 | CARR. BOLT GR2 ZINC 1/4-20 X 1 1/4" |
| 19 | 33-50-0555 | 3 | WELD ASSEMBLY BEARING SUPPORT |
| 20 | 33-21-0060 | 3 | BEARING HOLDER |
| 21 | 01-01-2485 | 9 | FLAT WASHER 14 GA X 13/16"OD X 25/64" ID |
| 22 | NC14-75-0068 | 3 | BALL BEARING 99502H |
| 23 | NC01-17-0114 | 3 | HEX. BOLT GR2 ZINC 3/8-16 X 1" |
| 24 | NC02-14-0019 | 3 | FLANGE NUT HEX. NC 3/8-16 GR. B |
| 25 | NC01-04-0007 | 5 | CARR. BOLT GR2 ZINC 1/4-20 X 1 1/2" |
| 26 | 33-50-0018 | 1 | DUCT COLECTOR |
| 27 | NC14-62-0201 | 1 | PULLEY QD 3V 1/2-5/8 X 5.55 OD X SD 3B52 |
| 28 | NC14-62-0005 | 1 | QD BUSHING SD 1 1/4" |
| 29 | NC13-25-0233 | 1 | VINYLE PROTECTOR COLLAR |
| 30 | NC01-04-0109 | 6 | CARR. BOLT GR2 ZINC 3/8-16 X 1" |
| 31 | NC01-93-0011 | 6 | LOCK NUT 3/8-16 |
| 32 | NC01-04-0234 | 3 | CARR. BOLT GR2 ZINC 1/2-13 X 1 1/4 |
| 33 | NC02-32-0014 | 3 | LOCK WASHER ZINC 1/2" |
| 34 | NC02-07-0020 | 3 | HEX. NUT ZINC 1/2-13 |
| 35 | 01-01-0925 | 3 | WASHER |
| 36 | NC02-22-0012 | 3 | WASHER ZINC 1/2 BOLT = 9/16"Ø X 1 3/8" OD |
| 37 | NC13-65-0001 | 1 | UNION 1/4" NPT X 7/8" |
| 38 | NC01-69-0798 | 1 | GREASE FITTING 1/4" NPT X RIGHT |
| 39 | 33-41-0920 | 1 | SQUARE KEY |
| 40 | 33-01-0370 | 2 | ROTATION TRIGGER PLATE |
| 41 | NC01-07-0002 | 4 | CARR. BOLT GR5 ZINC 1/4-20 X 5/8" |
| 42 | 33-01-3095 | 1 | SPROCKET GUARD |
| 43 | NC02-22-0008 | 4 | WASHER ZINC 5/16" |
| 44 | 33-55-0140 | 1 | RIGHT LIMIT SWITCH & BEARING GUIDE ASSY. |
| 45 | 33-55-0145 | 1 | LEFT LIMIT SWITCH & BEARING GUIDE ASSY. |
| 46 | 33-57-0527 | 1 | TURBINE 380 IC (NEW) |

| # | PART # | Qty | TITLE |
|---|--------------|-----|---|
| 1 | 33-50-0560 | 1 | BEARING HOLDER |
| 2 | 33-09-0000 | 4 | ROLLER BEARING BUSHING |
| 3 | 33-38-0000 | 1 | FLANGE BEARING UCF 207-20 X Ø 1 1/4" X Ø 1/8 NPT |
| 4 | NC01-04-0111 | 4 | CARR. BOLT GR2 ZINC 3/8-16 X 1 1/2" |
| 5 | 01-01-2485 | 4 | FLAT WASHER 14 GA X 13/16"OD X 25/64" ID |
| 6 | NC02-32-0012 | 4 | LOCK WASHER ZINC 3/8" |
| 7 | NC02-07-0018 | 4 | HEX. NUT ZINC 3/8-16 |
| 8 | NC17-02-0366 | 1 | HYDRAULIC HOSE 1/4 X 18" CUT 1/8 NPTMALE RIG.X 1/4NPTMALE RIG |
| 9 | 40-22-2200 | 4 | SPECIAL WASHER |

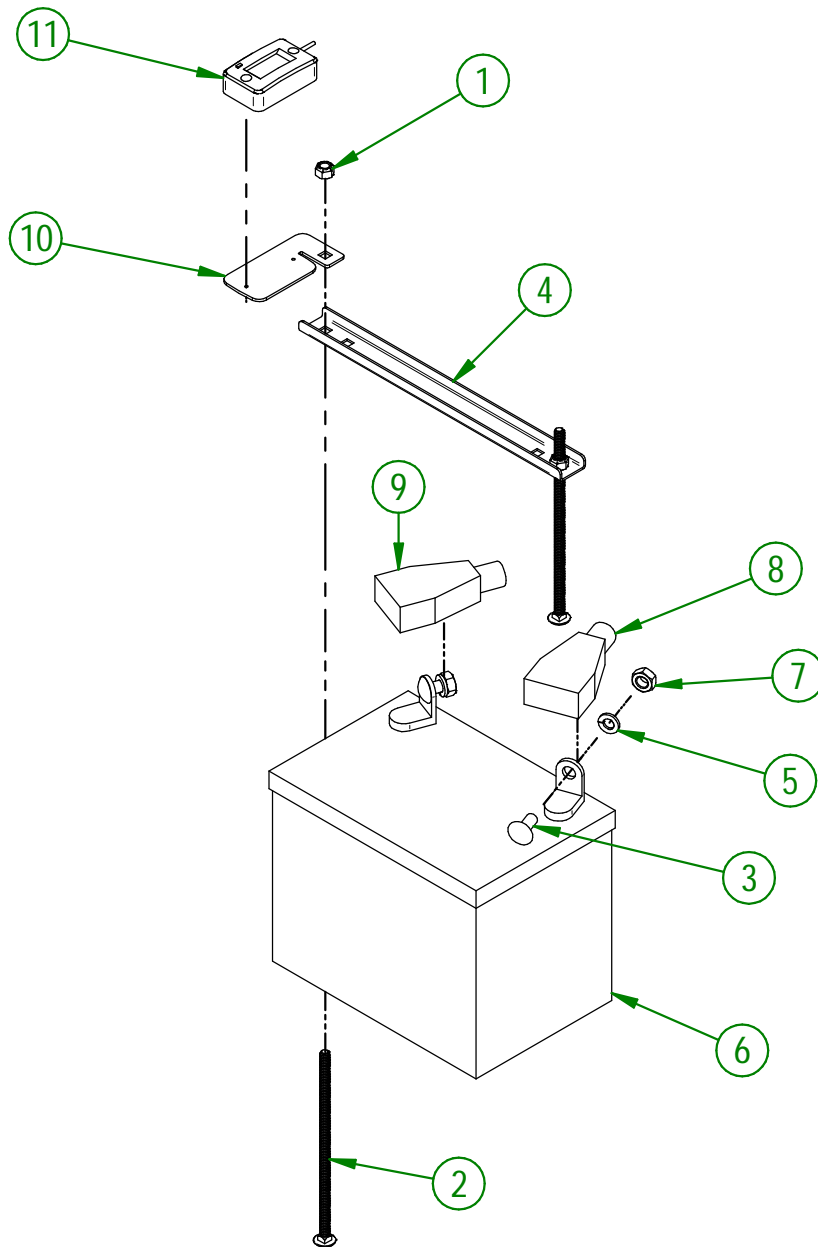


AGRIMETAL
BEARING SUPPORT

CREATION : 06/12/17
REVISION : 08/04/24

ASSEMBLY : **33-55-0590**
AUTHOR : J.KABWE

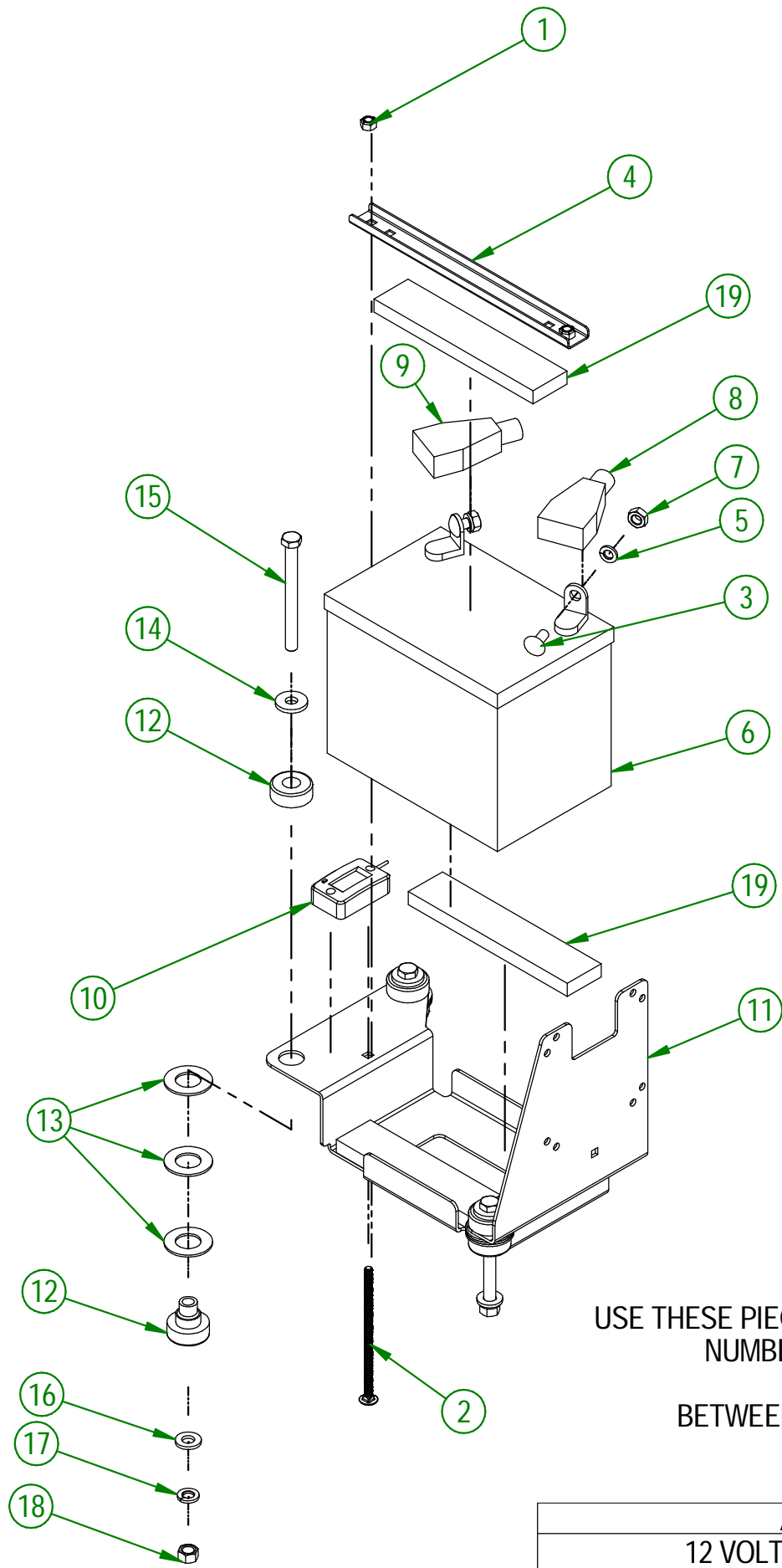
| # | PART # | Qty | TITLE |
|----|--------------|-----|----------------------------------|
| 1 | NC01-96-0009 | 2 | NYLON-INSERT LOCKNUT ZINC 1/4-20 |
| 2 | NC01-04-0027 | 2 | CARR. BOLT 1/4-20 X 6" LG |
| 3 | NC01-04-0056 | 2 | CARR. BOLT 5/16-18 X3/4" |
| 4 | 33-01-3015 | 1 | BATTERY STRAPE |
| 5 | NC02-32-0011 | 2 | LOCK WASHER ZINC 5/16" |
| 6 | NCI3-12-0001 | 1 | 12 VOLTS BATTERY |
| 7 | NC02-07-0017 | 2 | HEX. NUT 5/16-18 |
| 8 | NCI3-80-0267 | 1 | RED PROTECTOR FOR BATTERY POST |
| 9 | NCI3-80-0268 | 1 | BLACK PROTECTOR FOR BATTERY POST |
| 10 | 33-01-4000 | 1 | HOUR METER HOLDER |
| 11 | NCI3-37-0669 | 1 | HOUR METER |



USE THESE PIECES ONLY IF YOUR SERIAL NUMBER IS AFFECTED:

BELOW # 44661

| | |
|-------------------------|------------------------------|
| AGRIMETAL | |
| 12 VOLTS BATTERY GROUP. | |
| CREATION : 31/10/17 | ASSEMBLY : 33-57-0055 |
| REVISION : 11/09/23 | AUTHOR : J.KABWE |



USE THESE PIECES ONLY IF YOUR SERIAL NUMBER IS AFFECTED:

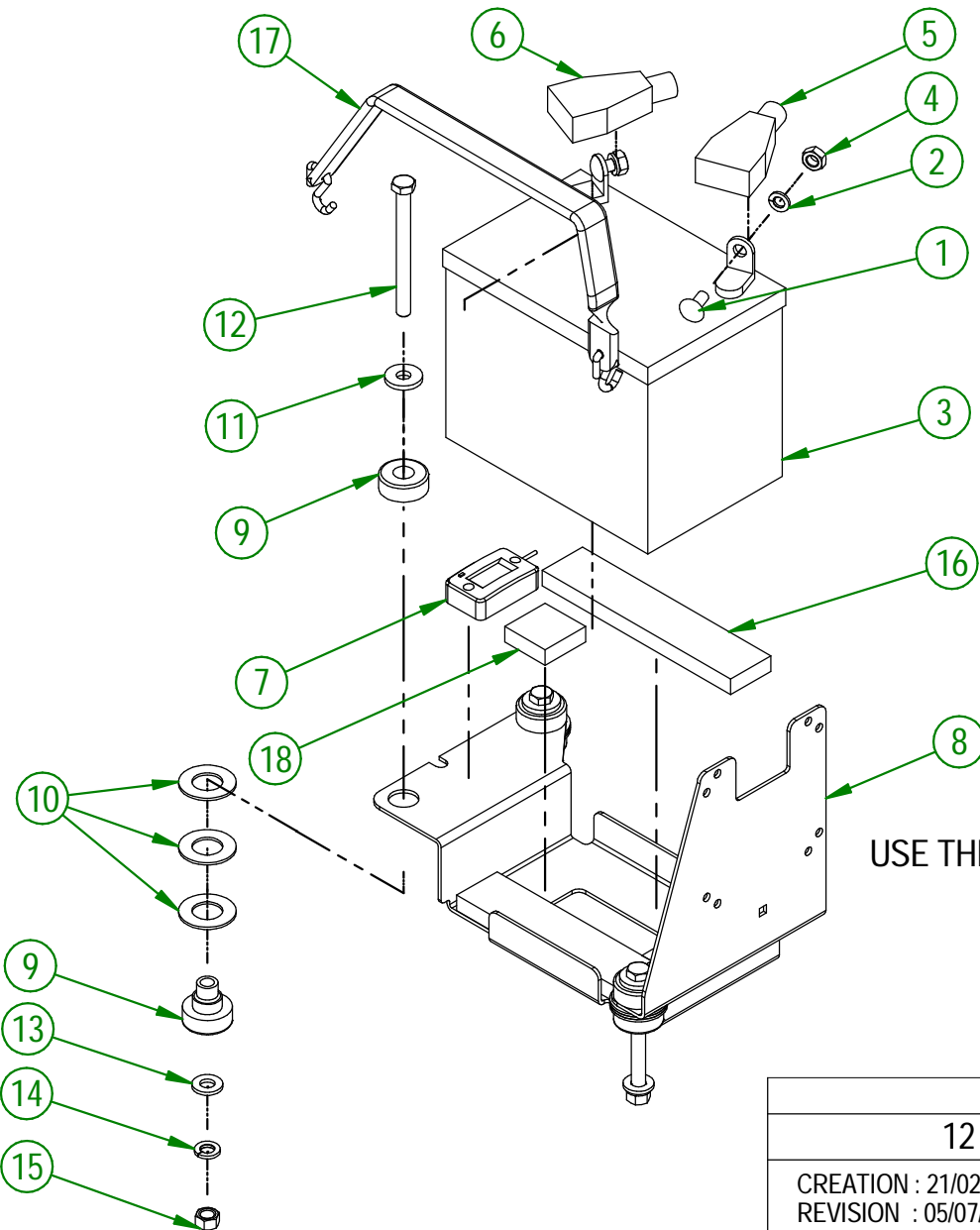
BETWEEN #44661 & #45502

| | |
|-------------------------|------------------------------|
| AGRIMETAL | |
| 12 VOLTS BATTERY GROUP. | |
| CREATION : 29/08/23 | ASSEMBLY : 33-57-0057 |
| REVISION : 05/07/24 | AUTHOR : D. CHASSÉ |

33-57-0057

| # | PART # | Qty | TITLE |
|----|--------------|-----|---------------------------------------|
| 1 | NC01-96-0009 | 2 | NYLON-INSERT LOCKNUT ZINC 1/4-20 |
| 2 | NC01-04-0024 | 2 | CARR. BOLT GR2 ZINC 1/4-20 X 5" |
| 3 | NC01-04-0056 | 2 | CARR. BOLT 5/16-18 X3/4" |
| 4 | 33-01-3015 | 1 | BATTERY STRAPE |
| 5 | NC02-32-0011 | 2 | LOCK WASHER ZINC 5/16" |
| 6 | NC13-12-0017 | 1 | 12 VOLTS GEL BATTERY |
| 7 | NC02-07-0017 | 2 | HEX. NUT 5/16-18 |
| 8 | NC13-80-0267 | 1 | RED PROTECTOR FOR BATTERY POST |
| 9 | NC13-80-0268 | 1 | BLACK PROTECTOR FOR BATTERY POST |
| 10 | NC13-37-0669 | 1 | HOUR METER |
| 11 | 33-57-2400 | 1 | BATTERY SUPPORT PLATE "INCL. STICKER" |
| 12 | NC13-15-0354 | 3 | RED RUBBER BASE MOUNT |
| 13 | 26-03-4800 | 9 | WASHER |
| 14 | 21-01-0950 | 3 | FLAT WASHER 10GA 1.005" DIA X 25/64" |
| 15 | NC01-25-0126 | 3 | HEX. BOLT GR5 ZINC 3/8-16 X 4" |
| 16 | NC02-25-0009 | 3 | WASHER 0.406" I.D. X 0.815 O.D. |
| 17 | NC02-32-0012 | 3 | LOCK WASHER ZINC 3/8" |
| 18 | NC02-07-0018 | 3 | HEX. NUT ZINC 3/8-16 |
| 19 | 33-42-0130 | 3 | BLACK ADHESIVE-BACK STRIP |

| # | PART # | Qty | TITLE |
|----|--------------|-----|---------------------------------------|
| 1 | NC01-04-0056 | 2 | CARR. BOLT 5/16-18 X3/4" |
| 2 | NC02-32-0011 | 2 | LOCK WASHER ZINC 5/16" |
| 3 | NCI3-12-0017 | 1 | 12 VOLTS GEL BATTERY |
| 4 | NC02-07-0017 | 2 | HEX. NUT 5/16-18 |
| 5 | NCI3-80-0267 | 1 | RED PROTECTOR FOR BATTERY POST |
| 6 | NCI3-80-0268 | 1 | BLACK PROTECTOR FOR BATTERY POST |
| 7 | NCI3-37-0669 | 1 | HOUR METER |
| 8 | 33-57-2401 | 1 | BATTERY SUPPORT PLATE "INCL. STICKER" |
| 9 | NCI3-15-0354 | 3 | RED RUBBER BASE MOUNT |
| 10 | 26-03-4800 | 9 | WASHER |
| 11 | 21-01-0950 | 3 | FLAT WASHER IOGA 1.005" DIA X 25/64" |
| 12 | NC01-25-0126 | 3 | HEX. BOLT GR5 ZINC 3/8-16 X 4" |
| 13 | NC02-25-0009 | 3 | WASHER 0.406" I.D. X 0.815 O.D. |
| 14 | NC02-32-0012 | 3 | LOCK WASHER ZINC 3/8" |
| 15 | NC02-07-0018 | 3 | HEX. NUT ZINC 3/8-16 |
| 16 | 33-42-0130 | 2 | BLACK ADHESIVE-BACK STRIP |
| 17 | NCI3-15-0008 | 1 | RUBBER STRAP |
| 18 | 33-42-0135 | 2 | BLACK ADHESIVE-BACK STRIP |



USE THESE PIECES ONLY IF YOUR SERIAL NUMBER IS AFFECTED:

#45503 AND ABOVE

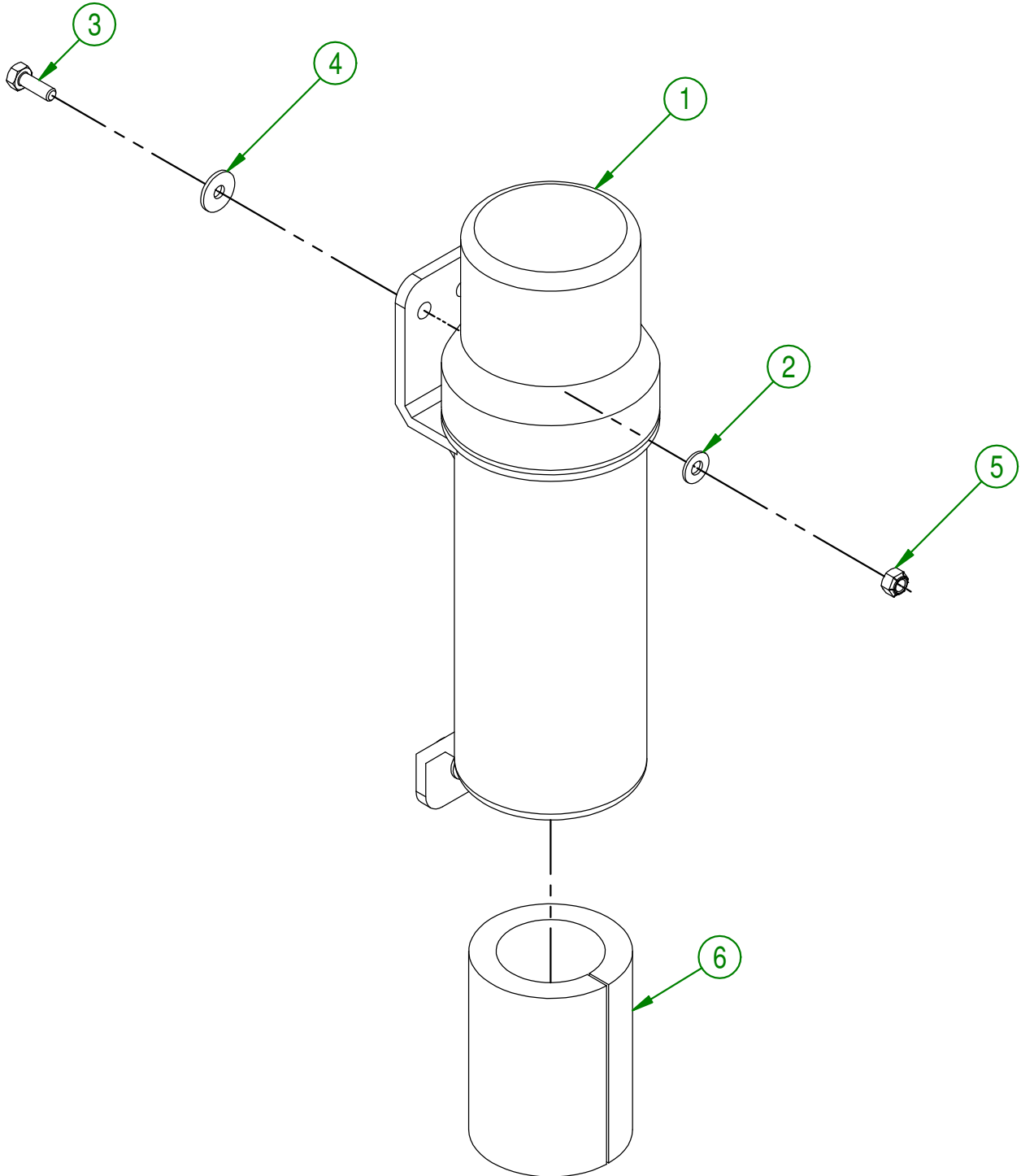
AGRIMETAL

12 VOLTS BATTERY GROUP.

CREATION : 21/02/24
REVISION : 05/07/24

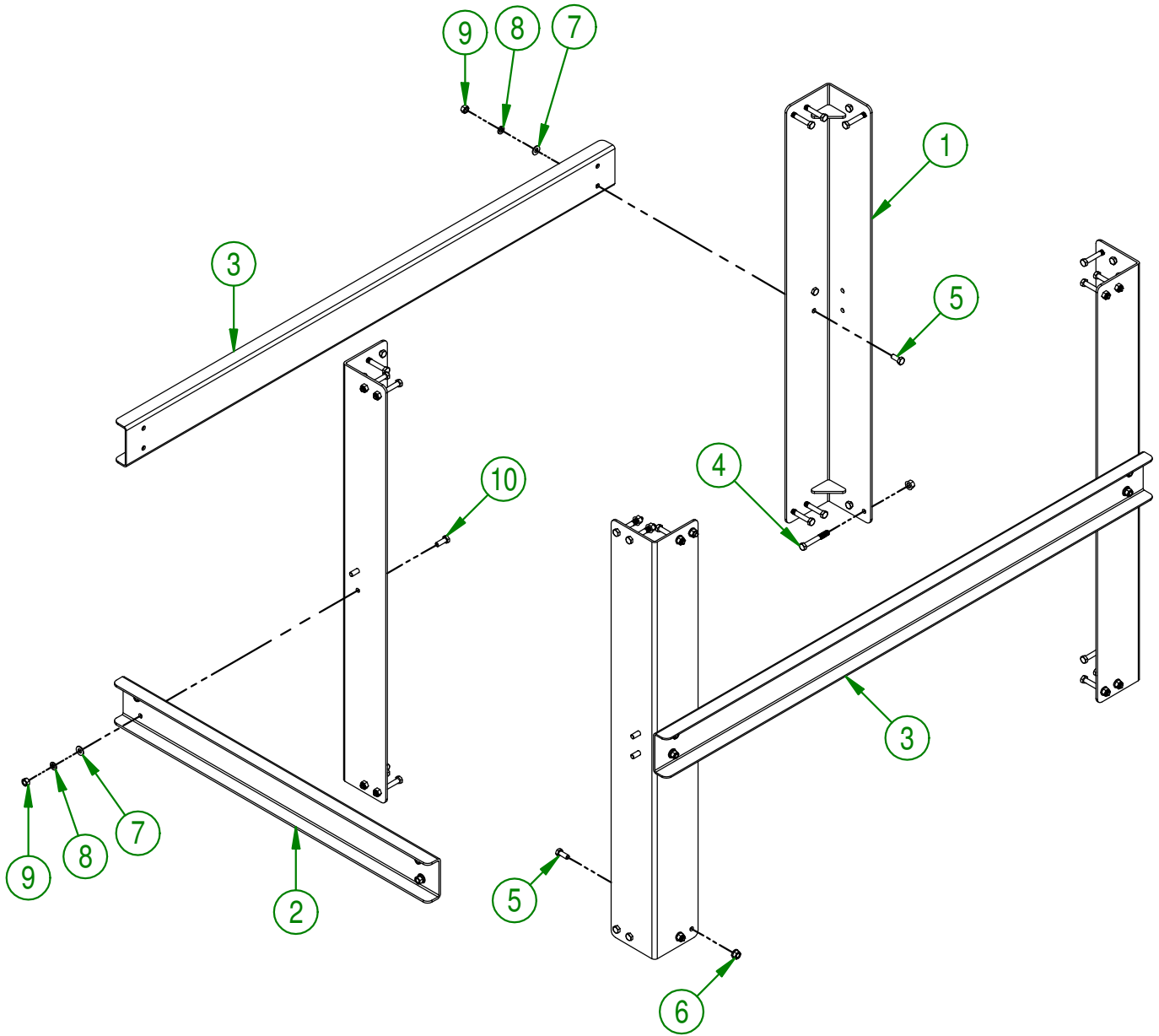
ASSEMBLY : **33-57-0170**
AUTHOR : D. CHASSÉ

| # | PART # | Qty | TITLE |
|---|--------------|-----|------------------------------------|
| 1 | NC13-30-0237 | 1 | PLASTIC TUBE FOR OPERATOR'S MANUAL |
| 2 | NC02-25-0007 | 3 | WASHER ZINC 0.281 = 9/32 |
| 3 | NC01-17-0004 | 3 | HEX. BOLT GR2 ZINC 1/4-20 X 3/4" |
| 4 | 36-01-2430 | 3 | WASHER |
| 5 | NC01-96-0009 | 3 | NYLON-INSERT LOCKNUT ZINC 1/4-20 |
| 6 | 33-98-0530 | 1 | OPERATOR MANUAL TB 380 |



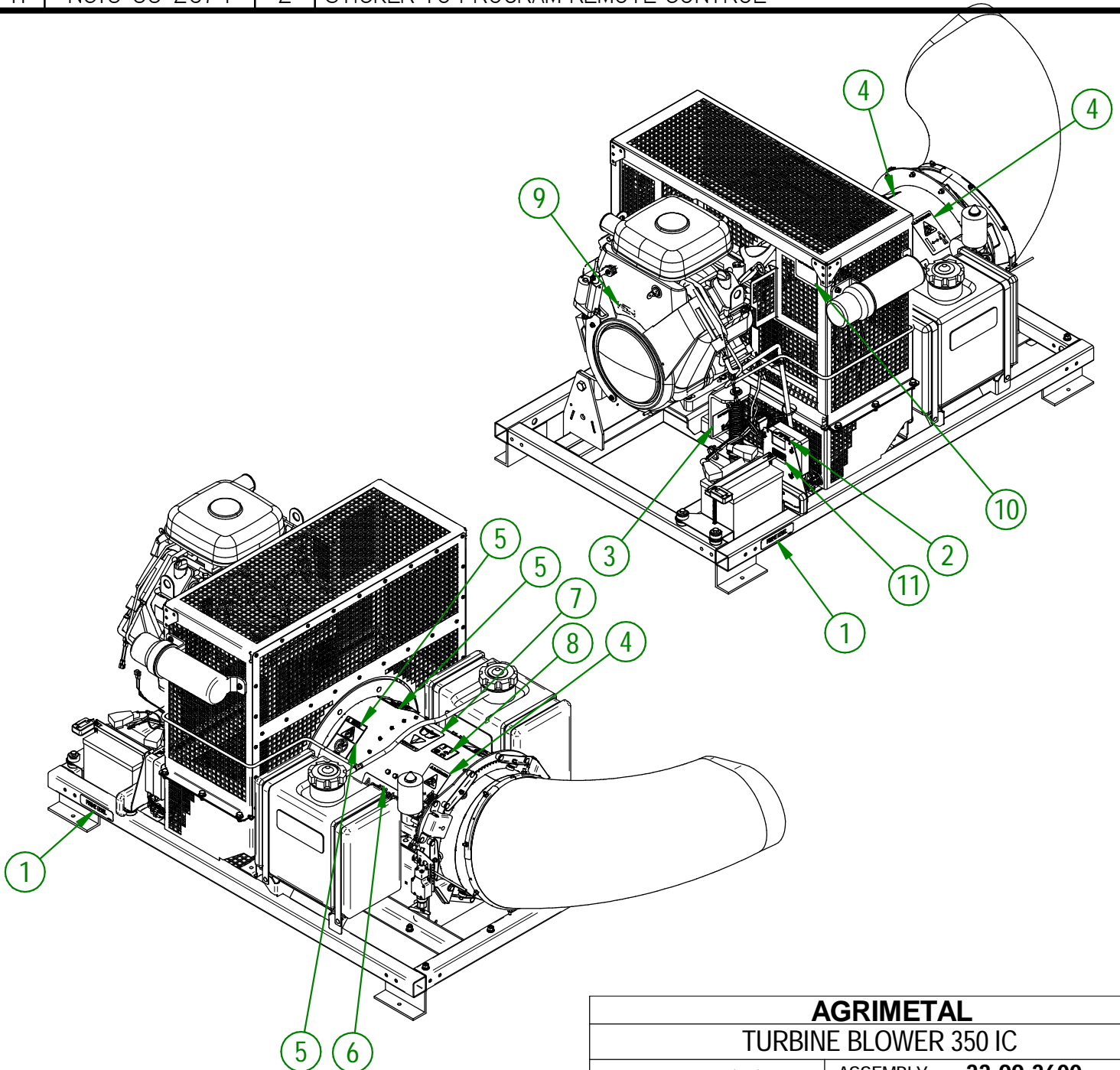
| | |
|--------------------------------------|----------------------------------|
| AGRIMETAL | |
| ASSEMBLY OPERATOR MANUEL TUBE | |
| CREATION : 09/11/17 | ASSEMBLY : 33-57-0565 |
| REVISION : 10/10/18 | AUTHOR : J.KABWE Page 18 de 20 |

| # | PART # | Qty | TITLE |
|----|--------------|-----|------------------------------------|
| 1 | 33-50-0005 | 4 | FRAME SUPPORT |
| 2 | 33-04-0130 | 1 | SUPPORT REINFORCING |
| 3 | 33-01-7620 | 2 | SUPPORT REINFORCING |
| 4 | NC01-17-0121 | 24 | HEX. BOLT GR2 ZINC 3/8-16 X 2 1/2" |
| 5 | NC01-17-0113 | 16 | HEX. BOLT GR2 ZINC 3/8-16 X 7/8" |
| 6 | NC02-14-0019 | 32 | FLANGE NUT HEX. NC 3/8-16 GR. B |
| 7 | 01-01-2485 | 12 | FLAT WASHER |
| 8 | NC02-32-0012 | 12 | LOCK WASHER ZINC 3/8" |
| 9 | NC02-07-0018 | 12 | HEX. NUT ZINC 3/8-16 |
| 10 | NC01-17-0114 | 4 | HEX. BOLT GR2 ZINC 3/8-16 X 1" |



| | |
|----------------------------|--------------------------------|
| AGRIMETAL | |
| (OP.) FRAME SUPPORT GROUP. | |
| CREATION : 28/11/17 | ASSEMBLY : 33-57-3505 |
| REVISION : 08/01/18 | AUTHOR : J.KABWE Page 19 de 20 |

| # | PART # | Qty | TITLE |
|----|--------------|-----|---|
| 1 | NCI3-33-0052 | 2 | STICKER FRAME LEVEL |
| 2 | NCI3-33-0227 | 1 | STICKER FUSE 15 AMP MAXIMUM |
| 3 | NCI3-33-0266 | 1 | STICKER IMPORT 6" 152 MM |
| 4 | NCI3-33-0192 | 2 | STICKER (PROJECTION RISK) |
| 5 | NCI3-33-0185 | 2 | STICKER PICTOGRAM (FIRE + CIGARETTE) |
| 6 | NCI3-33-0002 | 2 | STICKER AGRIMETAL |
| 7 | NCI3-33-0183 | 1 | STICKER CAUTION OPERATION MANUAL |
| 8 | NCI3-33-0342 | 1 | STICKER 99 DB |
| 9 | NCI3-33-0024 | 1 | STICKER GREASE HERE |
| 10 | NCI3-33-0178 | 1 | STICKER IMPORTANT PLEASE CHECK OIL LEVEL... |
| 11 | NCI3-33-2674 | 2 | STICKER TO PROGRAM REMOTE CONTROL |

**AGRIMETAL****TURBINE BLOWER 350 IC**

CREATION : 26/10/23
 REVISION : 31/10/23

ASSEMBLY : **33-99-3600**
 AUTHOR : D. CHASSÉ