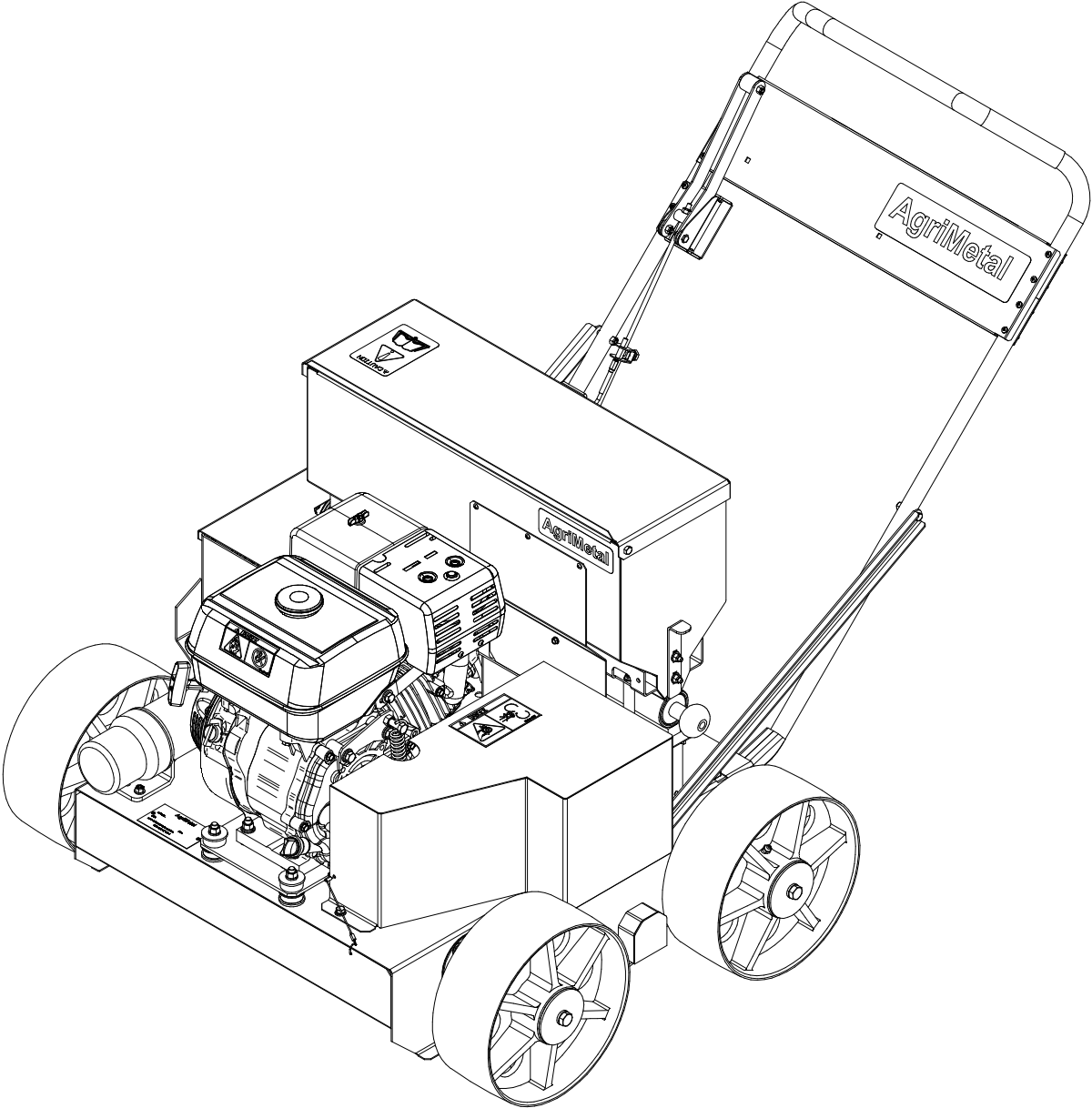
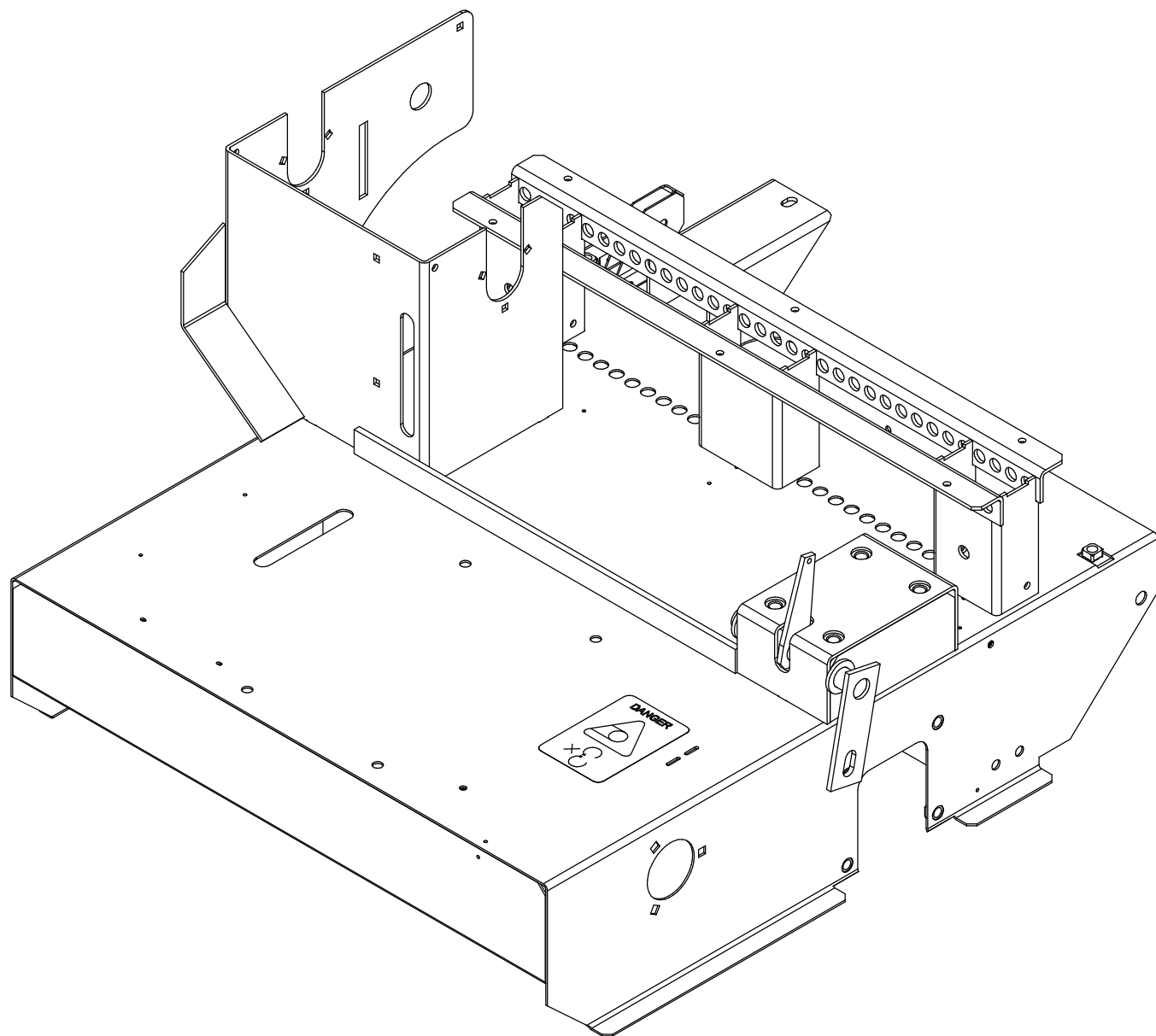


AgriMetal

PARTS LIST



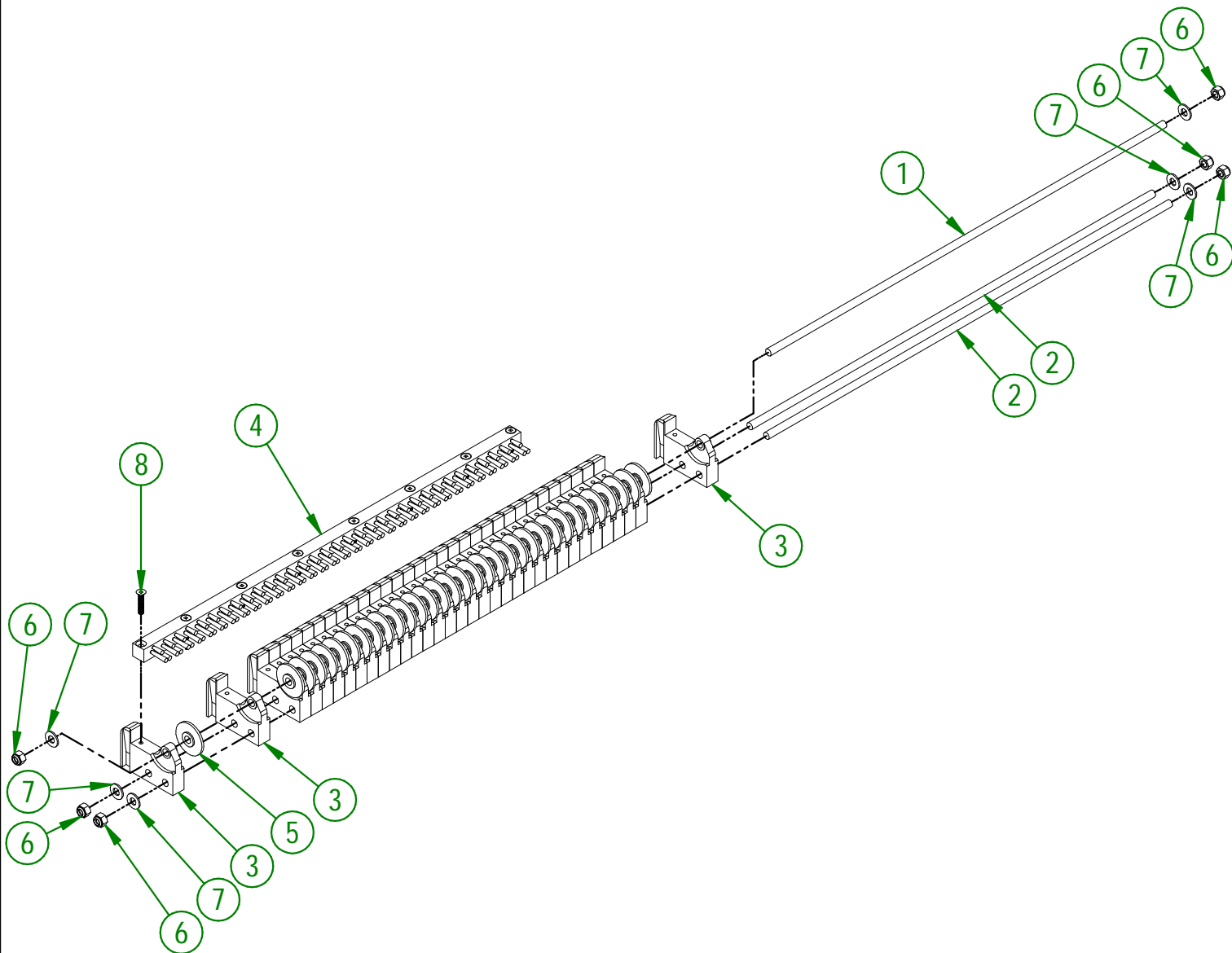
OVERSEEDER - C



AGRIMETAL	
FRAME GROUP (STICKER INCLUDED)	
CREATION : 01/03/19	ASSEMBLY : 75-57-0000
REVISION : 20/02/26	AUTHOR : F.HÉLIE

75-55-0015

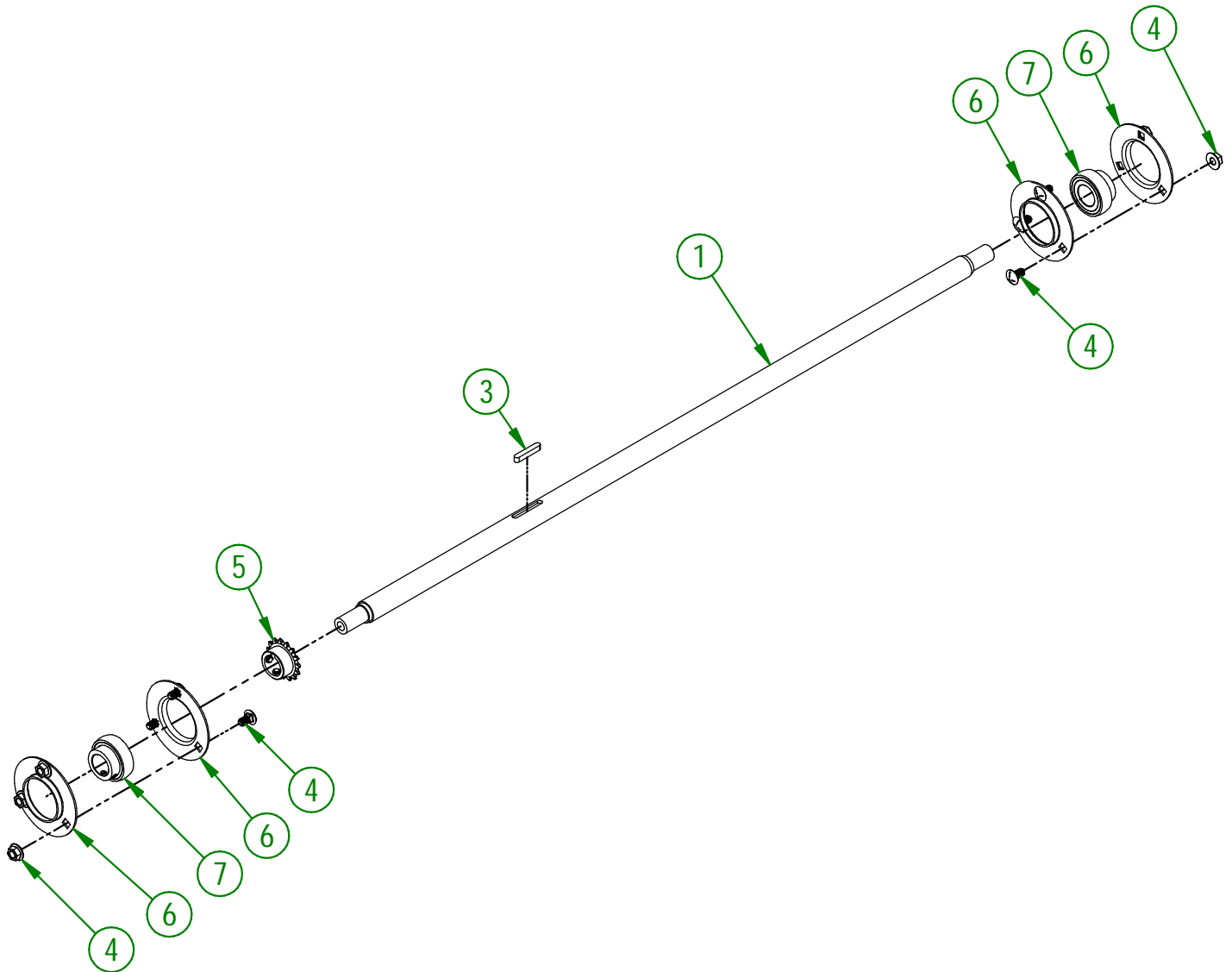
#	PART #	Qty	TITLE
1	75-13-0405	1	SEED DISPENSER WHEEL ROD
2	75-13-0410	2	SEED DISPENSER ROD
3	75-21-0200	34	SEED DISPENSER
4	75-42-0195	1	BRUSH 3/4" X 3/4" X 25 1/4" LG.
5	75-42-0625	33	SEED DISPENSER WASHER
6	NC01-96-0011	6	NYLON NUT 3/8-16
7	NC02-25-0009	6	FLAT WASHER 14 GA X 13/16"OD X 25/64" ID
8	NC02-36-0136	8	FLAT HEAD MACHINE SCREW (SQUARE DRIVE) 1/4-20 X 1 1/4"



AGRIMETAL	
SEED DISPENSER ASSEMBLY	
CREATION : 01/03/19	ASSEMBLY : 75-55-0015
REVISION : 20/02/26	AUTHOR : F.HÉLIE

75-57-0010

#	PART #	Qty	TITLE
1	75-20-0105	1	FRONT WHEEL SHAFT
2	NC01-07-0055	6	CARR. BOLT GR5 NC ZINC 5/16-18 X 5/8"
3	NC01-65-0087	1	KEY 1/4 X 1/4 X 1 1/2"
4	NC02-14-0006	6	HEX. NUT SPECIAL FLANGET NC 5/16-18 B GRADE
5	NC14-55-0244	1	SPROCKET 35BI5H X Ø 1" KW 1/4" 2SS
6	NC14-75-0009	4	PRESSED STEEL FLANGED HOUSING F5 O.D. 3 3/4"
7	NC14-75-0016	2	SEAL BALL BEARING SB 205-16



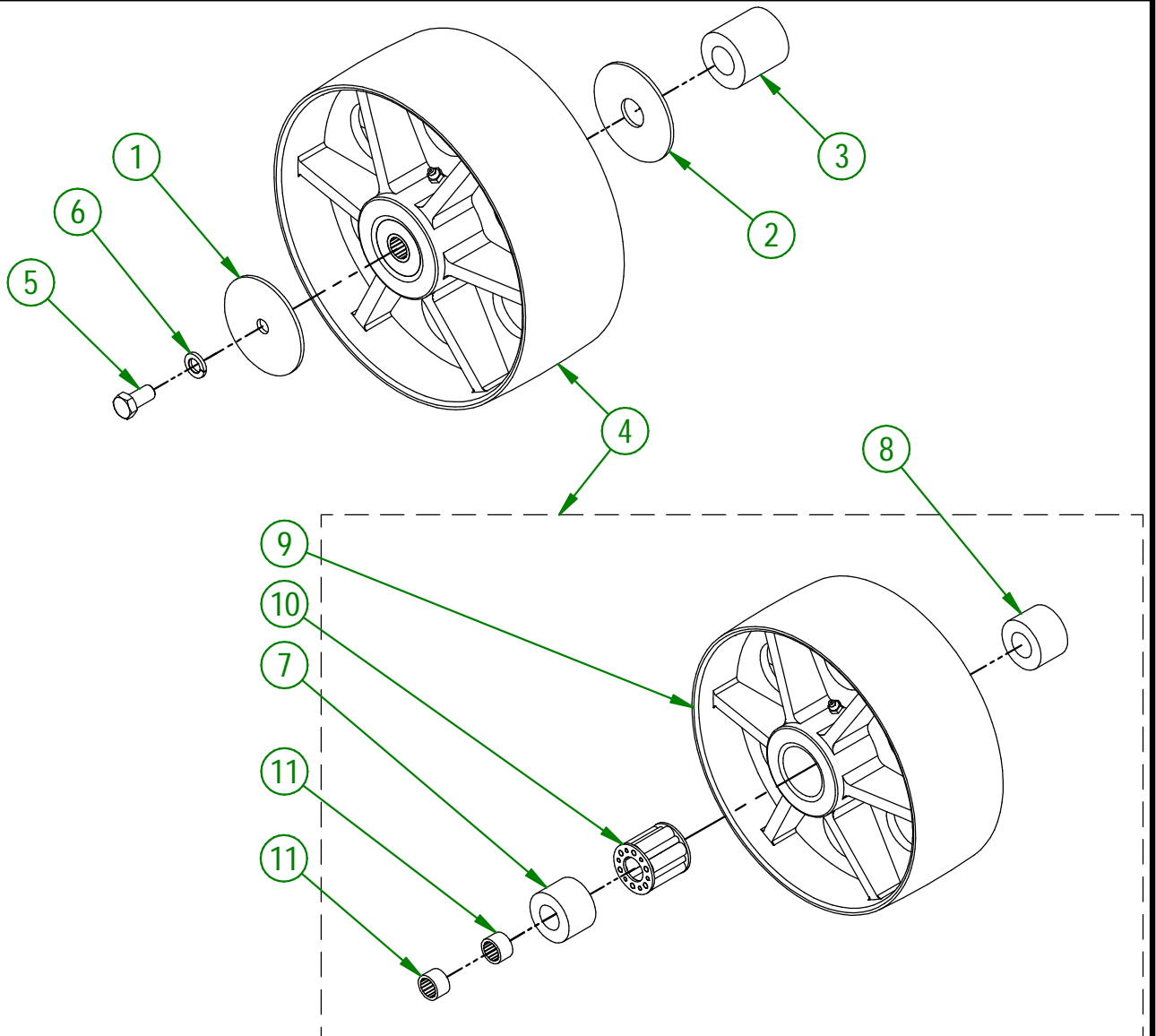
AGRIMETAL	
FRONT WHEEL SHAFT GROUP	
CREATION : 01/03/19	ASSEMBLY : 75-57-0010
REVISION : 20/02/26	AUTHOR : F.HÉLIE

75-57-0015

#	PART #	Qty	TITLE
1	75-01-0900	1	WASHER
2	75-01-0902	1	WASHER
3	75-42-0140	1	LEFT FRONT WHEEL BUSHING
4	75-55-0060	1	FRONT U.H.M.W. BLACK WHEEL
5	NC01-25-0247	1	HEX. BOLT GR5 ZINC 1/2-13 X 1" LG
6	NC02-32-0014	1	LOCK WASHER ZINC 1/2"

75-55-0060

#	PART #	Qty	TITLE
7	75-21-0020	1	PLASTIC WHEEL INTERNAL BUSHING
8	75-42-0100	1	PLASTIC WHEEL INTERNAL BUSHING
9	75-55-0050	1	U.H.M.W. BLACK WHEEL
10	NC14-70-0027	1	ROLLER BEARING
11	NC14-75-0112	2	NEEDLE BEARING RC-I2I610



AGRIMETAL

LEFT FRONT WHEEL GROUP

CREATION : 01/03/19
REVISION : 23/02/26

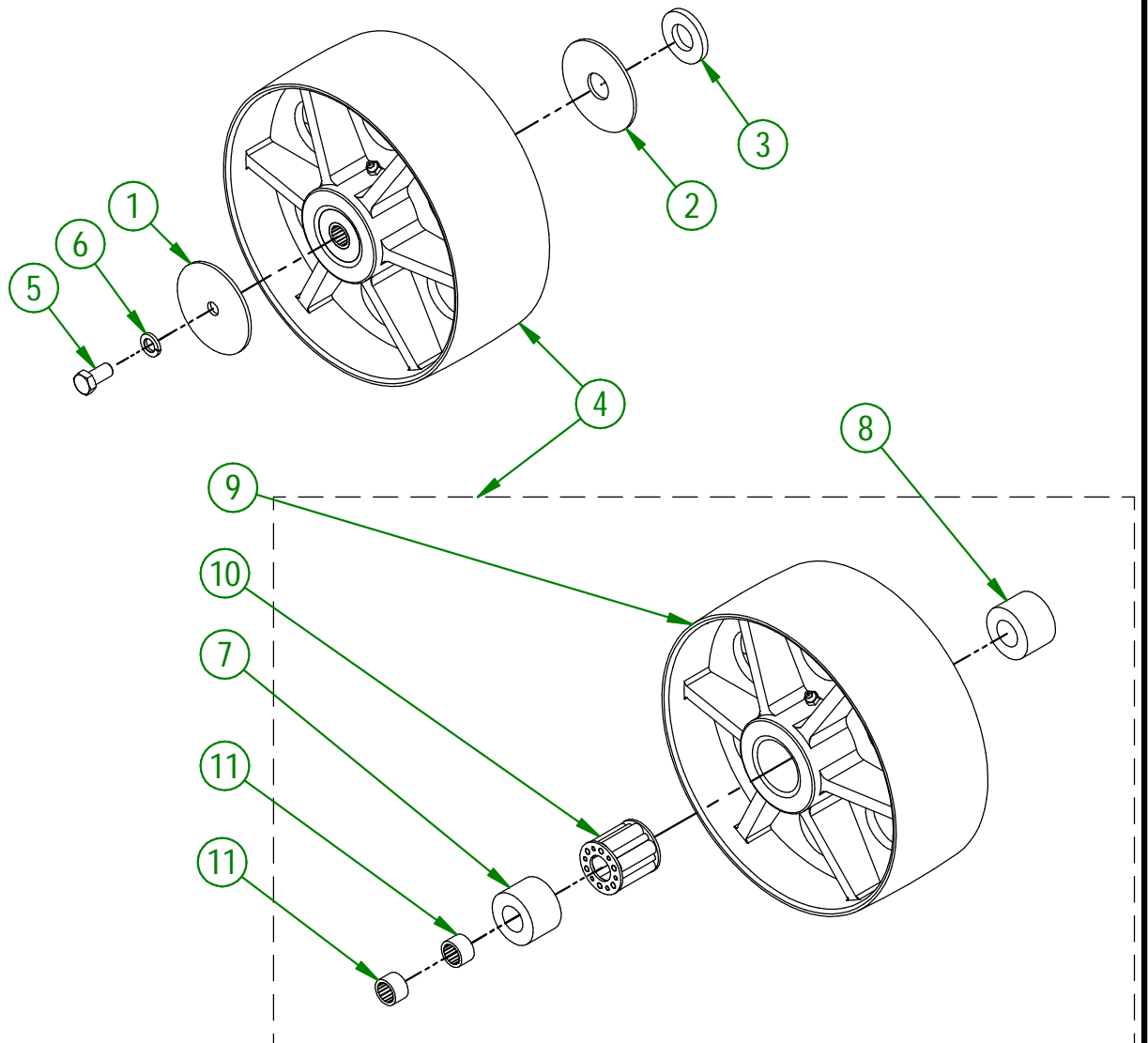
ASSEMBLY : **75-57-0015**
AUTHOR : F.HÉLIE

75-57-0020

#	PART #	Qty	TITLE
1	75-01-0900	1	WASHER
2	75-01-0902	1	WASHER
3	75-42-0150	1	RIGHT FRONT WHEEL WASHER
4	75-55-0060	1	FRONT U.H.M.W. BLACK WHEEL
5	NC01-25-0247	1	HEX. BOLT GR5 ZINC 1/2-13 X 1" LG
6	NC02-32-0014	1	LOCK WASHER ZINC 1/2"

75-55-0060

#	PART #	Qty	TITLE
7	75-21-0020	1	PLASTIC WHEEL INTERNAL BUSHING
8	75-42-0100	1	PLASTIC WHEEL INTERNAL BUSHING
9	75-55-0050	1	U.H.M.W. BLACK WHEEL
10	NC14-70-0027	1	ROLLER BEARING
11	NC14-75-0112	2	NEEDLE BEARING RC-121610



AGRIMETAL

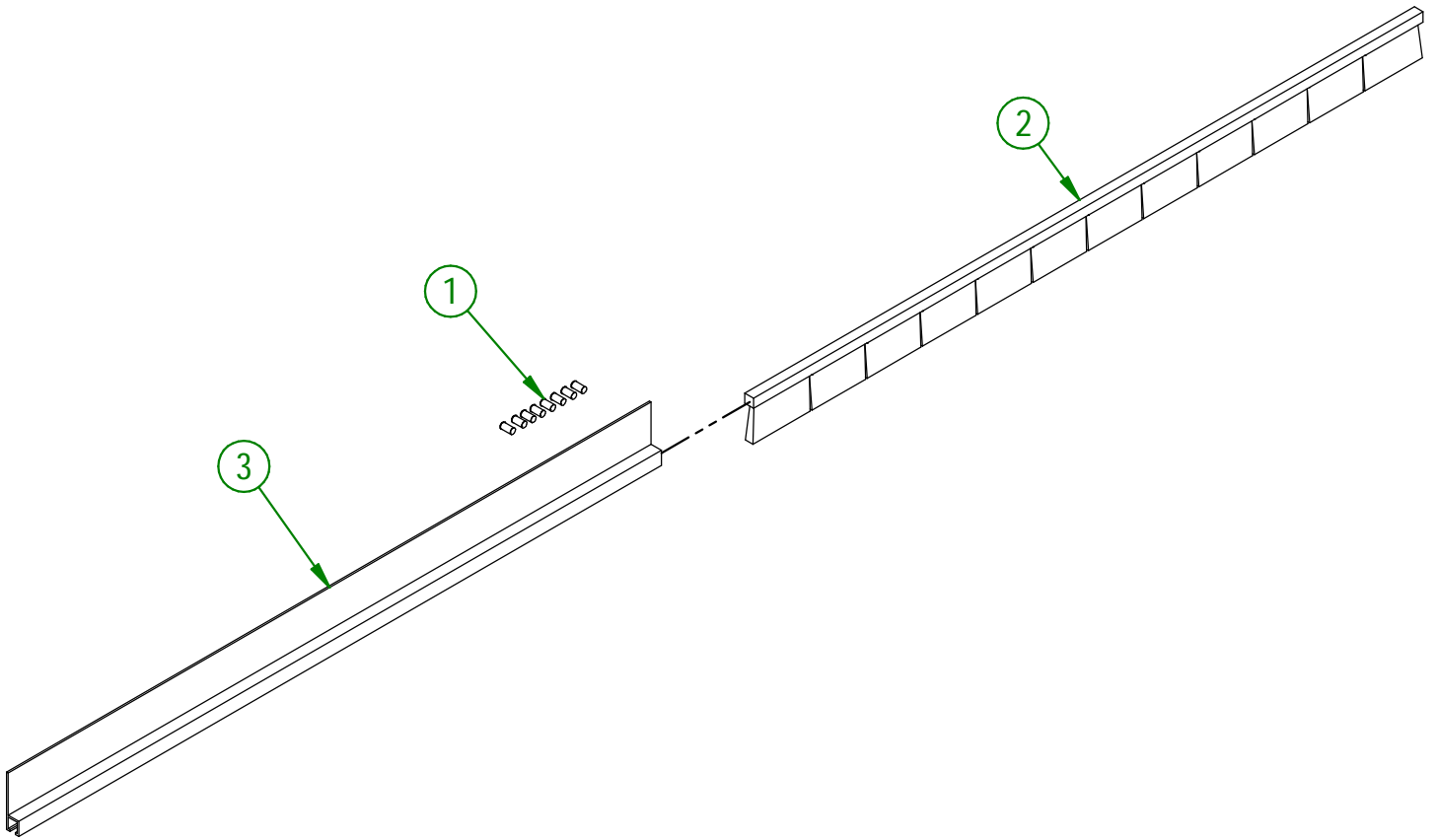
RIGHT FRONT WHEEL GROUP

CREATION : 01/03/19
REVISION : 23/02/26

ASSEMBLY : **75-57-0020**
AUTHOR : F.HÉLIE

75-57-0025

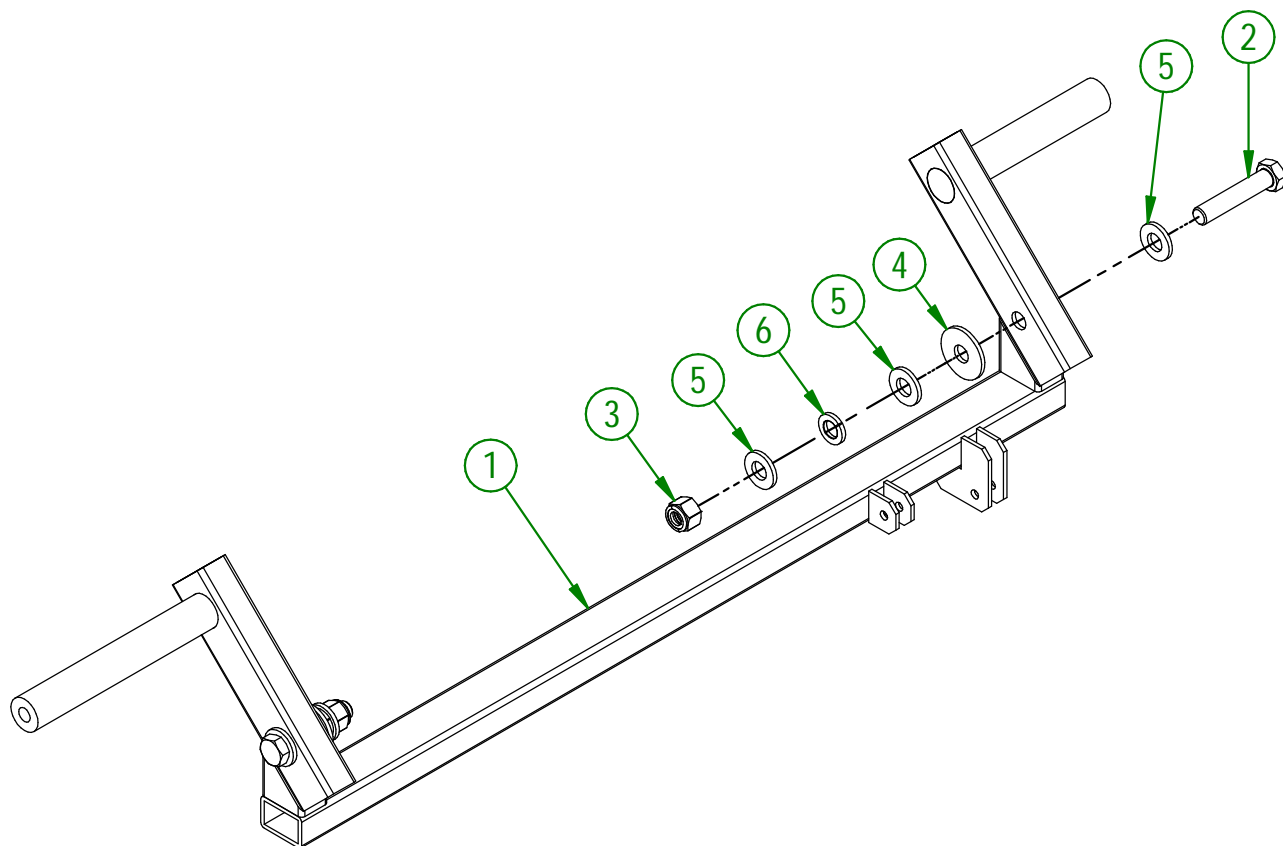
#	PART #	Qty	TITLE
1	NC01-78-0016	8	ALUMINIUM BLIND POP RIVET STEEL MANDREL 0.187 X 0.690
2	NC13-80-0236	1	BLACK NYLON BRUSH .030 X 1 1/2" X 25"
3	NC13-80-0238	1	PROFILE h-TYPE FOR BRUSH #7 X 24" LG.



AGRIMETAL	
BRUSH 1 1/2" GROUP (FRONT)	
CREATION : 01/03/19	ASSEMBLY : 75-57-0025
REVISION : 20/02/26	AUTHOR : F.HÉLIE

75-57-0030

#	PART #	Qty	TITLE
1	75-50-0025	1	ADJUSTABLE WHEEL FRAME
2	NC01-25-0253	2	HEX. BOLT GR5 NC ZINC 1/2-13 X 2 1/2"
3	NC01-96-0014	2	NYLON-INSERT LOCKNUT ZINC 1/2-13
4	NC02-22-0012	2	WASHER ZINC 1/2 BOLT = 9/16"Ø X 1 3/8" OD
5	NC02-25-0011	6	WASHER SAE ZINC 17/32 ID
6	NC02-32-0014	2	LOCK WASHER ZINC 1/2"



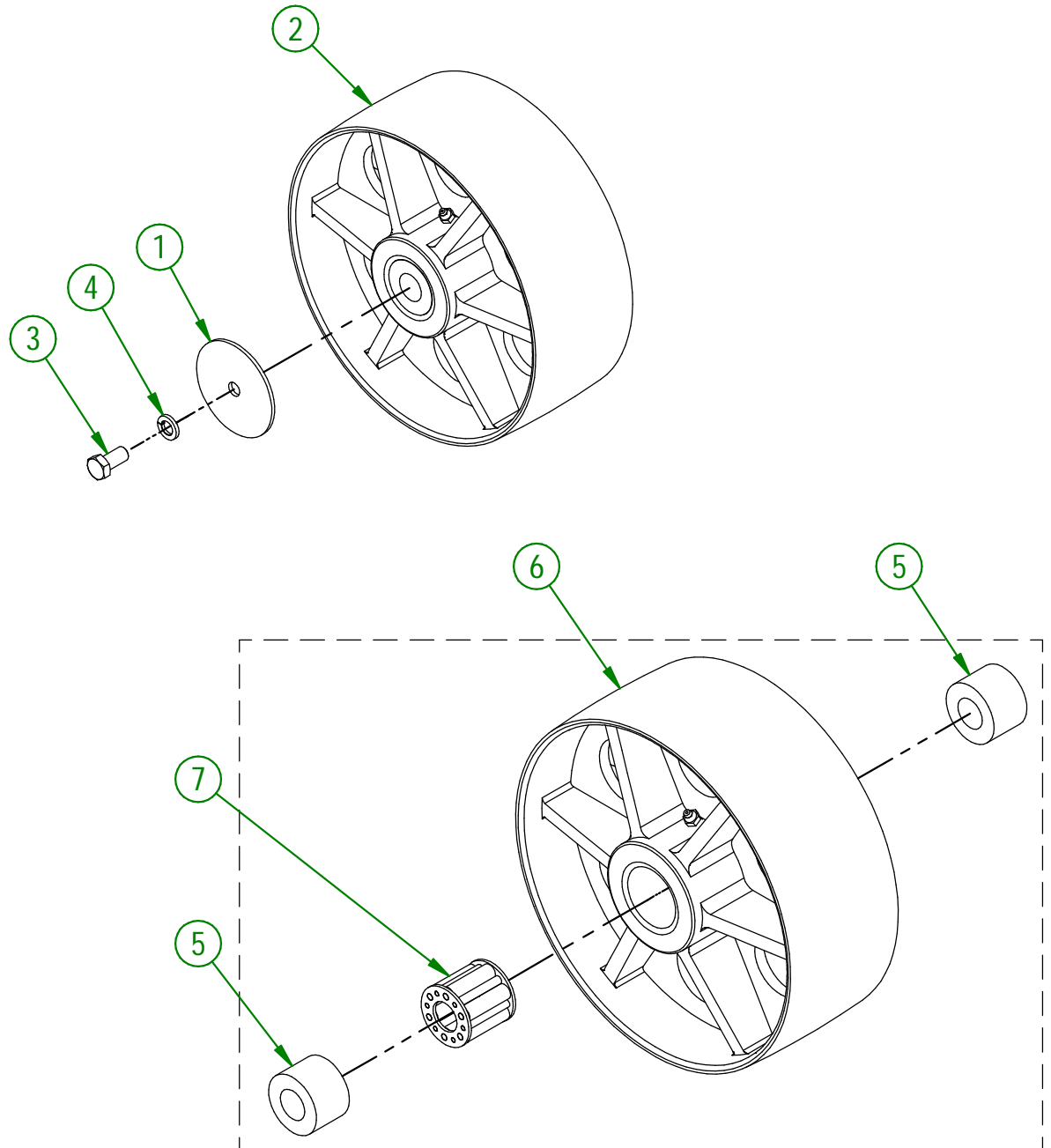
AGRIMETAL	
ADJUSTABLE WHEEL FRAME GROUP	
CREATION : 01/03/19	ASSEMBLY : 75-57-0030
REVISION : 20/02/26	AUTHOR : F.HÉLIE

75-57-0040

#	PART #	Qty	TITLE
1	75-01-0900	1	WASHER
2	75-55-0055	1	REAR U.H.M.W BLACK WHEEL
3	NC01-25-0247	1	HEX. BOLT GR5 ZINC 1/2-13 X 1" LG
4	NC02-32-0014	1	LOCK WASHER ZINC 1/2"

75-55-0055

#	PART #	Qty	TITLE
5	75-42-0100	2	PLASTIC WHEEL INTERNAL BUSHING
6	75-55-0050	1	U.H.M.W. BLACK WHEEL
7	NC14-70-0027	1	ROLLER BEARING

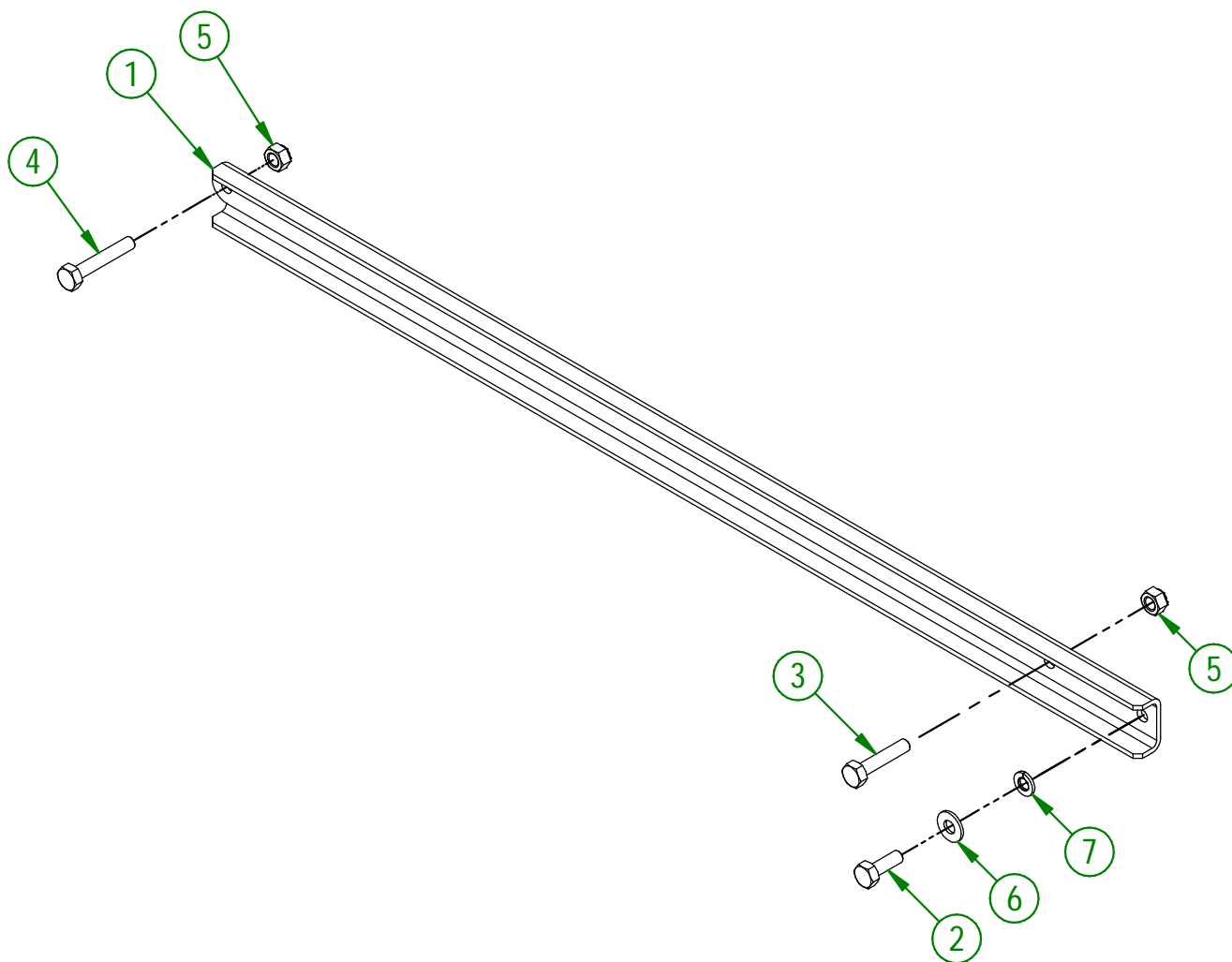


AGRIMETAL
RIGHT REAR WHEEL GROUP

CREATION : 01/03/19
 REVISION : 23/02/26

ASSEMBLY : **75-57-0040**
 AUTHOR : F.HÉLIE

#	PART #	Qty	TITLE
1	75-01-7640	1	HANDLE BRACE
2	NC01-25-0004	1	HEX. BOLT GR5 ZINC 1/4-20 X 3/4"
3	NC01-25-0007	1	HEX. BOLT GR5 ZINC 1/4-20 X 1 1/4"
4	NC01-25-0008	1	HEX. BOLT GR5 ZINC 1/4-20 X 1 1/2"
5	NC01-96-0009	2	NYLON-INSERT LOCKNUT ZINC 1/4-20
6	NC02-25-0007	1	WASHER ZINC 0.281 = 9/32
7	NC02-32-0010	1	LOCK WASHER ZINC 1/4"



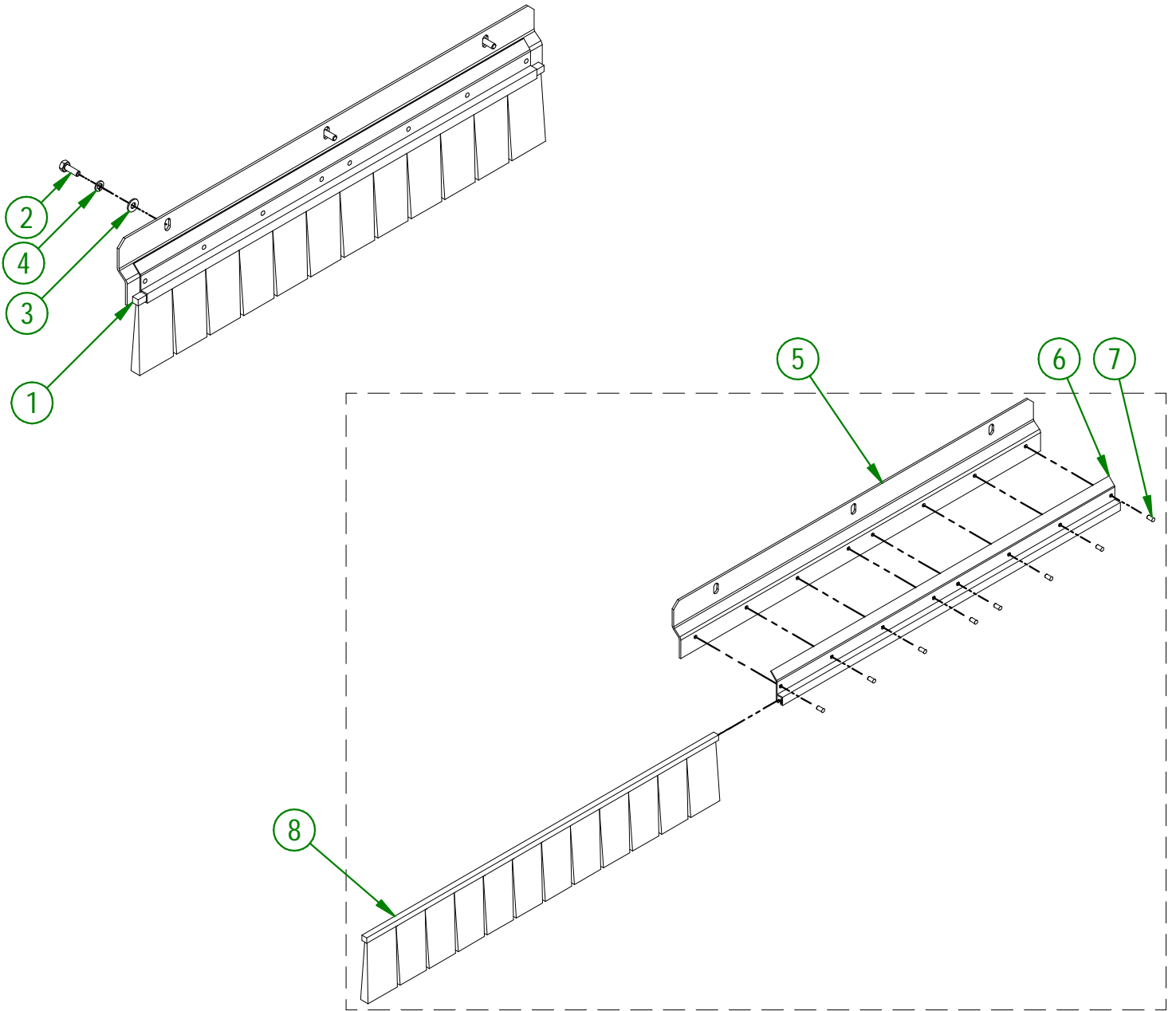
AGRIMETAL	
HANDLE BRACE GROUP	
CREATION : 01/03/19	ASSEMBLY : 75-57-0045
REVISION : 23/02/26	AUTHOR : F.HÉLIE

75-57-0050

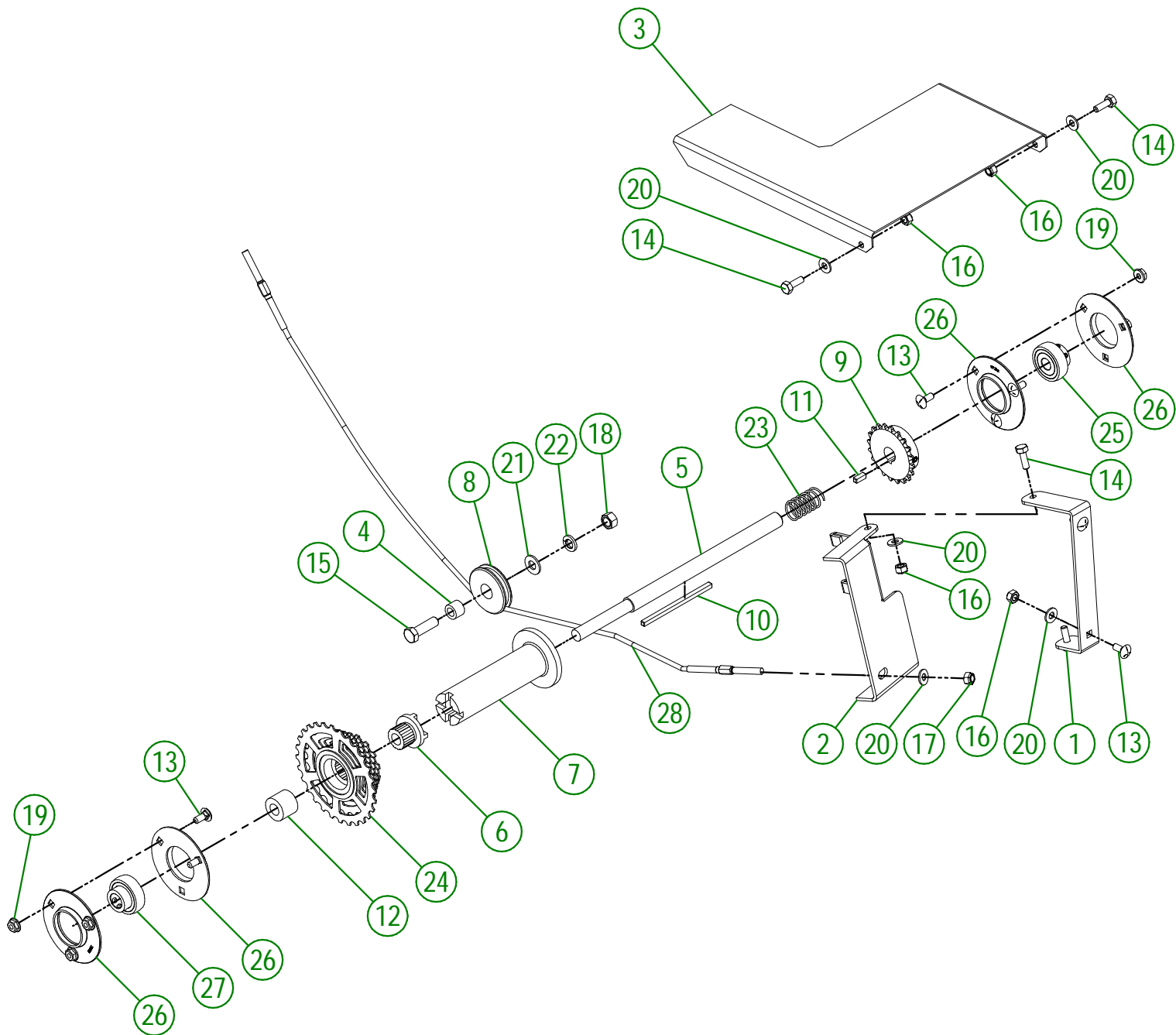
#	PART #	Qty	TITLE
1	75-55-0045	1	BRUSH 4" AND SUPPORT (REAR) ASSEMBLY
2	NC01-25-0004	3	HEX. BOLT GR5 ZINC 1/4-20 X 3/4"
3	NC02-25-0007	3	WASHER ZINC 0.281 = 9/32
4	NC02-32-0010	3	LOCK WASHER ZINC 1/4"

75-55-0045

#	PART #	Qty	TITLE
5	75-01-7600	1	REAR BRUSH SUPPORT
6	75-41-7250	1	PROFILE h-TYPE FOR BRUSH #7 X 24" LG
7	NC01-78-0016	8	ALUMINIUM BLIND POP RIVET STEEL MANDREL 0.187 X 0.690
8	NC13-80-0237	1	BLACK NYLON BRUSH .030 X 1 1/2" HAUT X 25"



AGRIMETAL	
BRUSH 4" AND SUPPORT GROUP (REAR)	
CREATION : 01/03/19	ASSEMBLY : 75-57-0050
REVISION : 20/02/26	AUTHOR : F.HÉLIE



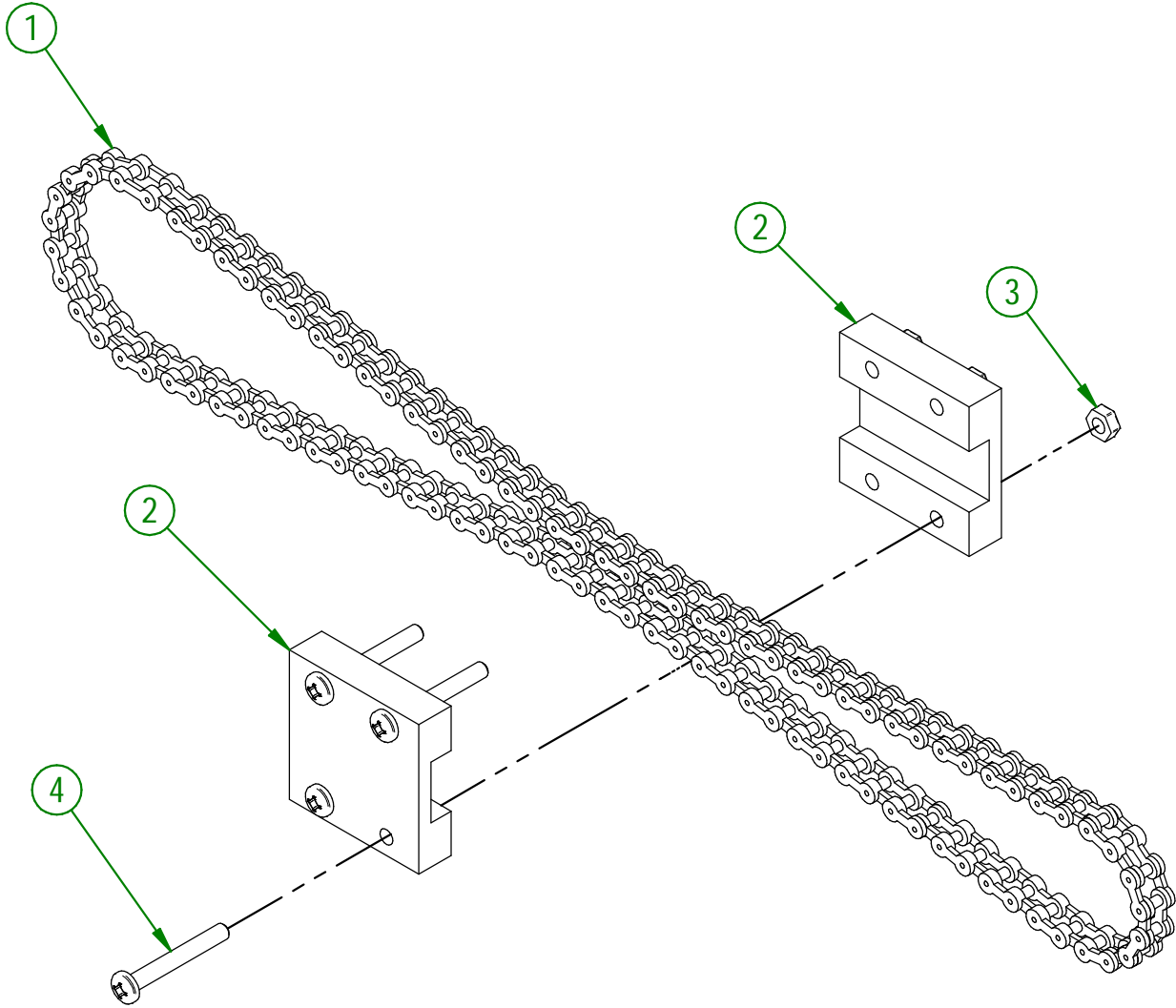
AGRIMETAL	
CLUTCH GROUP	
CREATION : 01/03/19	ASSEMBLY : 75-57-0055
REVISION : 23/02/26	AUTHOR : F.HÉLIE

75-57-0055

#	PART #	Qty	TITLE
1	75-01-1545	1	HINGE FOR CLUTCH
2	75-01-1550	1	CLUTCH LEVER
3	75-01-3045	1	CLUTCH COVER
4	75-09-0005	1	CABLE PULLEY BUSHING
5	75-13-0805	1	CLUTCH SHAFT
6	75-13-1800	1	CLUTCH OF CALIBRATED ROLLER
7	75-21-0075	1	CLUTCH
8	75-29-0000	1	CABLE PULLEY
9	75-36-0102	1	CLUTCH SPROCKET
10	75-41-0900	1	KEY 3/16" X 3/16" X 4"
11	75-41-0905	1	KEY 3/16" X 3/16" X 9/16"
12	75-42-0160	1	MULTIPLE SPROCKET BUSHING
13	NC01-07-0002	8	CARR. BOLT GR5 ZINC 1/4-20 X 5/8"
14	NC01-25-0004	4	HEX. BOLT GR5 ZINC 1/4-20 X 3/4"
15	NC01-25-0115	1	HEX. BOLT GR5 ZINC 3/8-16 X 1 1/4"
16	NC01-96-0009	6	NYLON-INSERT LOCKNUT ZINC 1/4-20
17	NC01-97-0004	1	NYLON-INSERT LOCKNUT ZINC 1/4-28
18	NC02-07-0018	1	HEX. NUT ZINC 3/8-16
19	NC02-14-0017	6	FLANGED NUT GR. B 1/4-20
20	NC02-25-0007	7	WASHER ZINC 0.281 = 9/32
21	NC02-25-0009	1	FLAT WASHER 14 GA X 13/16"OD X 25/64" ID
22	NC02-32-0012	1	LOCK WASHER ZINC 3/8"
23	NC13-85-0037	1	COMPRESSION SPRING
24	NC14-55-0243	1	MULTIPLE SPROCKET
25	NC14-75-0108	1	BEARING SB 201-8 Ø 1/2"
26	NC14-75-0136	4	PRESSED STEEL FLANGED HOUSING O.D. 3 3/16" PF203
27	NC14-75-0155	1	BEARING SB 202-10 Ø 5/8"
28	NC17-02-0300	1	OVERSEEDER CABLE ASSEMBLY

75-57-0080

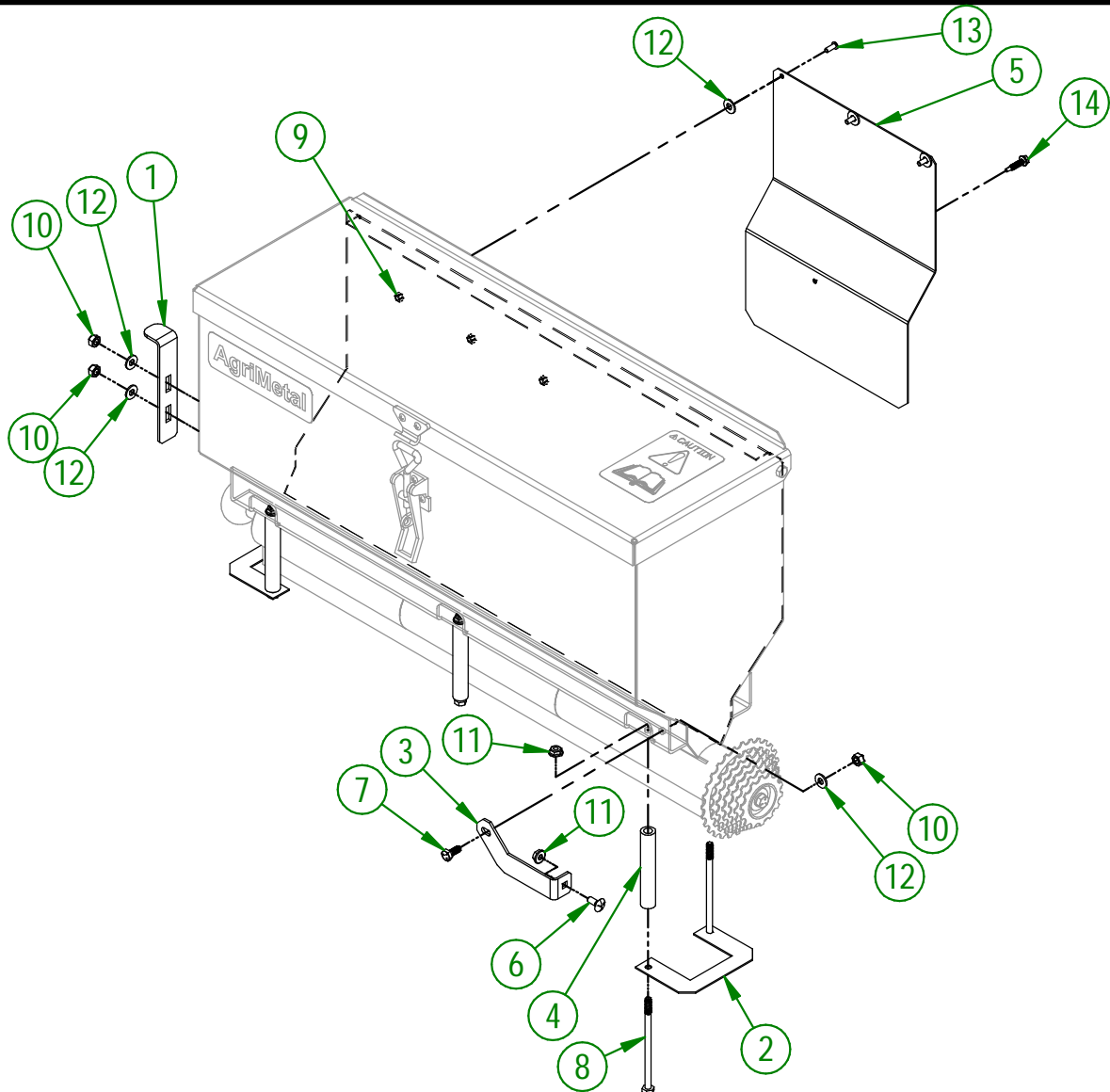
#	PART #	Qty	TITLE
1	75-37-1000	1	CHAIN #35 X 36"
2	75-42-0170	2	CHAIN TENSIONER #35
3	NC01-96-0006	4	NYLON NUT ZINC 3/16
4	NC02-40-0085	4	MACHINE SCREW T.R. 10-24 X 1 1/2"



AGRIMETAL	
TENSIONER & ROTOR CLUTCH CHAIN GROUP	
CREATION : 01/03/19	ASSEMBLY : 75-57-0080
REVISION : 23/02/26	AUTHOR : F.HÉLIE

75-57-0090

#	PART #	Qty	TITLE
1	75-01-1560	1	CALIBRATED ROLLER LOCK
2	75-01-3110	2	DISTRIBUTOR SHAFT SHIM
3	75-01-7555	1	CLUTCH BOX BRACE
4	75-09-0015	6	ASSEMBLY GUIDE
5	75-22-2600	1	HEAT SHIELD
6	NC01-07-0002	3	CARR. BOLT GR5 ZINC 1/4-20 X 5/8"
7	NC01-25-0003	1	ZINC PLATED GR 5 HEX BOLT 1/4-20 X 5/8"
8	NC01-25-0020	6	HEX BOLT GR5 NC ZINC 1/4-20 X 4 1/2" LG.
9	NC01-96-0006	3	NYLON NUT ZINC 3/16
10	NC01-96-0009	3	NYLON-INSERT LOCKNUT ZINC 1/4-20
11	NC02-14-0017	7	FLANGED NUT GR. B 1/4-20
12	NC02-25-0007	6	WASHER ZINC 0.281 = 9/32
13	NC02-40-0080	3	MACHINE SCREWS SQUARE SOCKET #10-24 X 1/2" LG
14	NC02-41-0012	1	T METAL HEX. TAPPING SCREW 12 X 1"

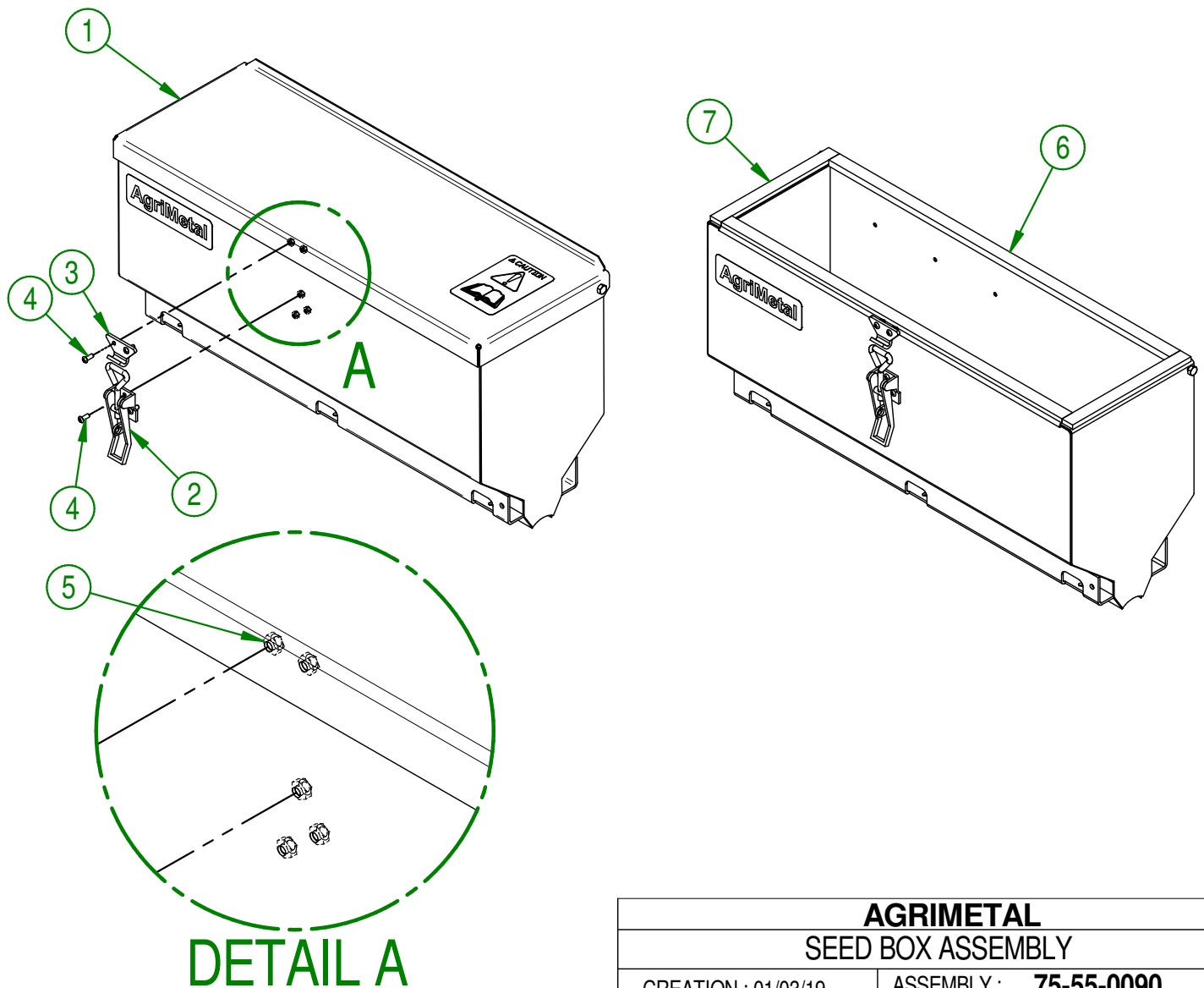


AGRIMETAL
SEED BOX GROUP

CREATION : 01/03/19
REVISION : 20/02/26

ASSEMBLY : **75-57-0090**
AUTHOR : F.HÉLIE

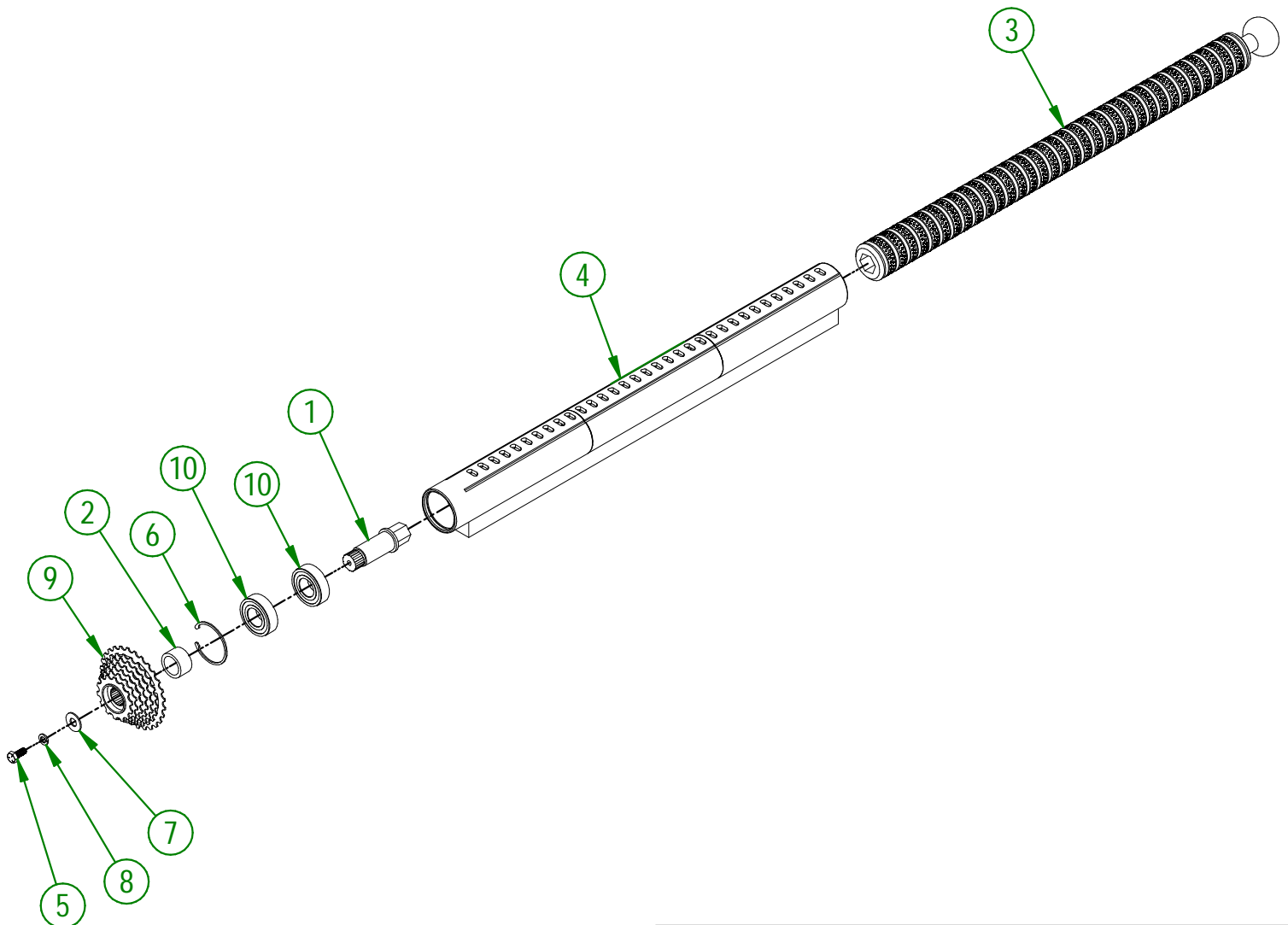
#	PART #	Qty	TITLE
1	75-57-0095	1	SEED BOX GROUP
2	NC01-63-0036	1	DRAW LATCH 6 1/2"
3	NC01-63-0037	1	DRAW LATCH STRIKER
4	NC02-40-0080	5	MACHINE SCREWS SQUARE SOCKET #10-24 X 1/2" LG
5	NC01-96-0006	5	NYLON NUT ZINC 10-24
6	75-42-0205	2	BLACK ADHESIVE-BACK STRIP
7	75-42-0200	2	BLACK ADHESIVE-BACK STRIP



AGRIMETAL	
SEED BOX ASSEMBLY	
CREATION : 01/03/19	ASSEMBLY : 75-55-0090
REVISION : 01/03/19	AUTHOR : F.HÉLIE

75-55-0040

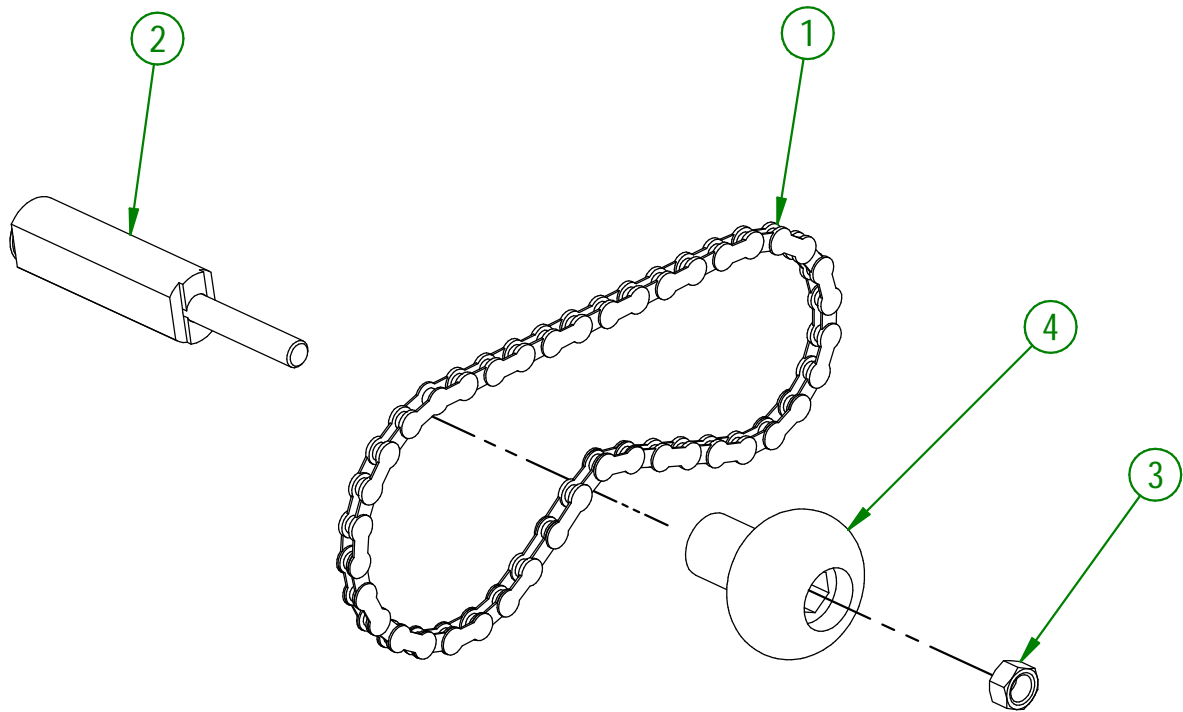
#	PART #	Qty	TITLE
1	75-13-1600	1	CALIBRATED ROLLER DRIVE SHAFT
2	75-42-0165	1	CALIBRATED ROLLER MULTIPLE SPROCKET BUSHING
3	75-42-0605	1	SEED CALIBRATED ROLLER "BEND"
4	75-55-0100	1	DISTRIBUTOR TUBE ASSEMBLY
5	NC01-25-0058	1	HEX BOLT GR5 ZINC PLATED 5/16-18 X 3/4"
6	NC01-64-0159	1	INTERNAL RETAINING RING 2 1/16" HOLE
7	NC02-22-0010	1	WASHER 13/32" ID
8	NC02-32-0011	1	LOCK WASHER ZINC 5/16"
9	NC14-55-0243	1	MULTIPLE SPROCKET
10	NC14-75-0070	2	6205-2RS BEARING



AGRIMETAL	
SEED DISTRIBUTOR TUBE ASSEMBLY	
CREATION : 01/03/19	ASSEMBLY : 75-55-0040
REVISION : 23/02/26	AUTHOR : F.HÉLIE

75-57-0120

#	PART #	Qty	TITLE
1	75-37-1005	1	BICYCLE CHAIN 22 1/4" ASSEMBLY
2	75-57-0125	1	CHAIN TENSIONER
3	NC02-07-0018	1	HEX. NUT ZINC 3/8-16
4	NC17-46-0018	1	HANDLE KNOB



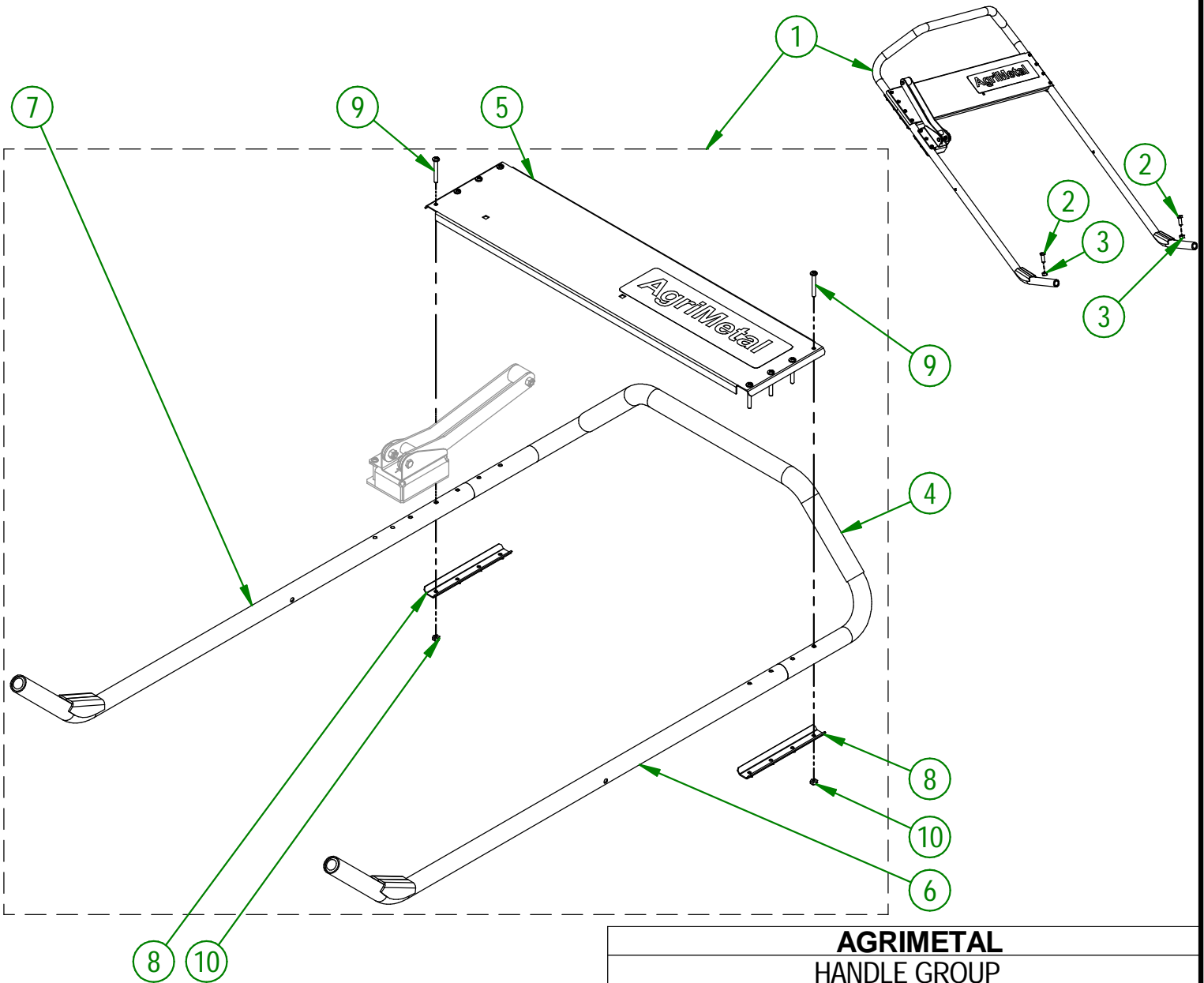
AGRIMETAL	
TENSIONER & MULTIPLE SPROCKET CLUTCH CHAIN GROUP	
CREATION : 01/03/19	ASSEMBLY : 75-57-0120
REVISION : 20/02/26	AUTHOR : F.HÉLIE

75-57-0130

#	PART #	Qty	TITLE
1	75-55-0030	1	HANDLE ASSEMBLY
2	NC01-25-0114	2	HEX. BOLT GR5 ZINC 3/8-16 X 1"
3	NC02-07-0018	2	HEX. NUT ZINC 3/8-16

75-55-0030

#	PART #	Qty	TITLE
4	36-55-0015	1	BLACK RUBBER HANDLE ASSEMBLY
5	75-55-0033	1	STRUT (OVERSEEDER STICKER INCLUDED)
6	75-50-0030	1	HANDLE GRIP (LEFT)
7	75-50-0031	1	HANDLE GRIP (RIGHT)
8	36-01-3055	2	HANDLE COUPLING
9	NC02-40-0085	8	MACHINE SCREW T.R. 10-24 X 1 1/2"
10	NC01-96-0006	8	NYLON NUT ZINC 3/16

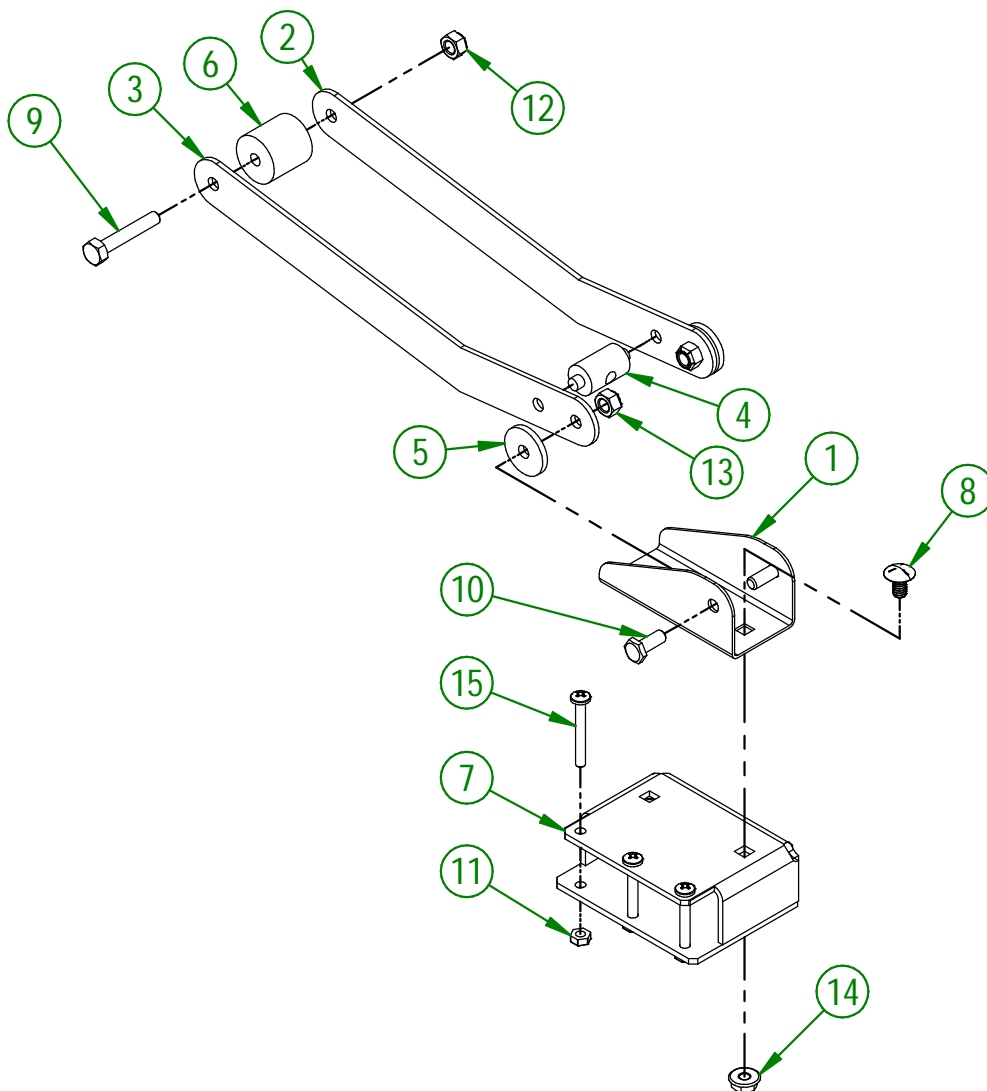


AGRIMETAL
HANDLE GROUP

CREATION : 01/03/19
REVISION : 23/02/26

ASSEMBLY : **75-57-0130**
AUTHOR : F.HÉLIE

#	PART #	Qty	TITLE
1	75-01-3015	1	LIFT LEVER SUPPORT
2	75-01-7500	1	RELEASE LEVER (LEFT)
3	75-01-7501	1	RELEASE LEVER (RIGHT)
4	75-21-0010	1	STEEL CABLE PIVOT
5	75-42-0105	2	RELEASE LEVER WASHER
6	75-42-0110	1	LIFT LEVER COUPLING
7	75-50-0015	1	RELEASE LEVER SUPPORT
8	NC01-07-0001	2	CARR. BOLT GR5 ZINC 1/4-20 X 1 1/2"
9	NC01-17-0008	1	HEX. BOLT GR2 ZINC 1/4-20 X 1 1/2"
10	NC01-29-0003	2	HEX. BOLT GR5 ZINC 1/4-28 X 5/8"
11	NC01-96-0006	3	NYLON NUT ZINC 3/16
12	NC01-96-0009	1	NYLON-INSERT LOCKNUT ZINC 1/4-20
13	NC01-97-0004	2	NYLON-INSERT LOCKNUT ZINC 1/4-28
14	NC02-14-0017	2	FLANGED NUT GR. B 1/4-20
15	NC02-40-0085	3	MACHINE SCREW T.R. 10-24 X 1 1/2"



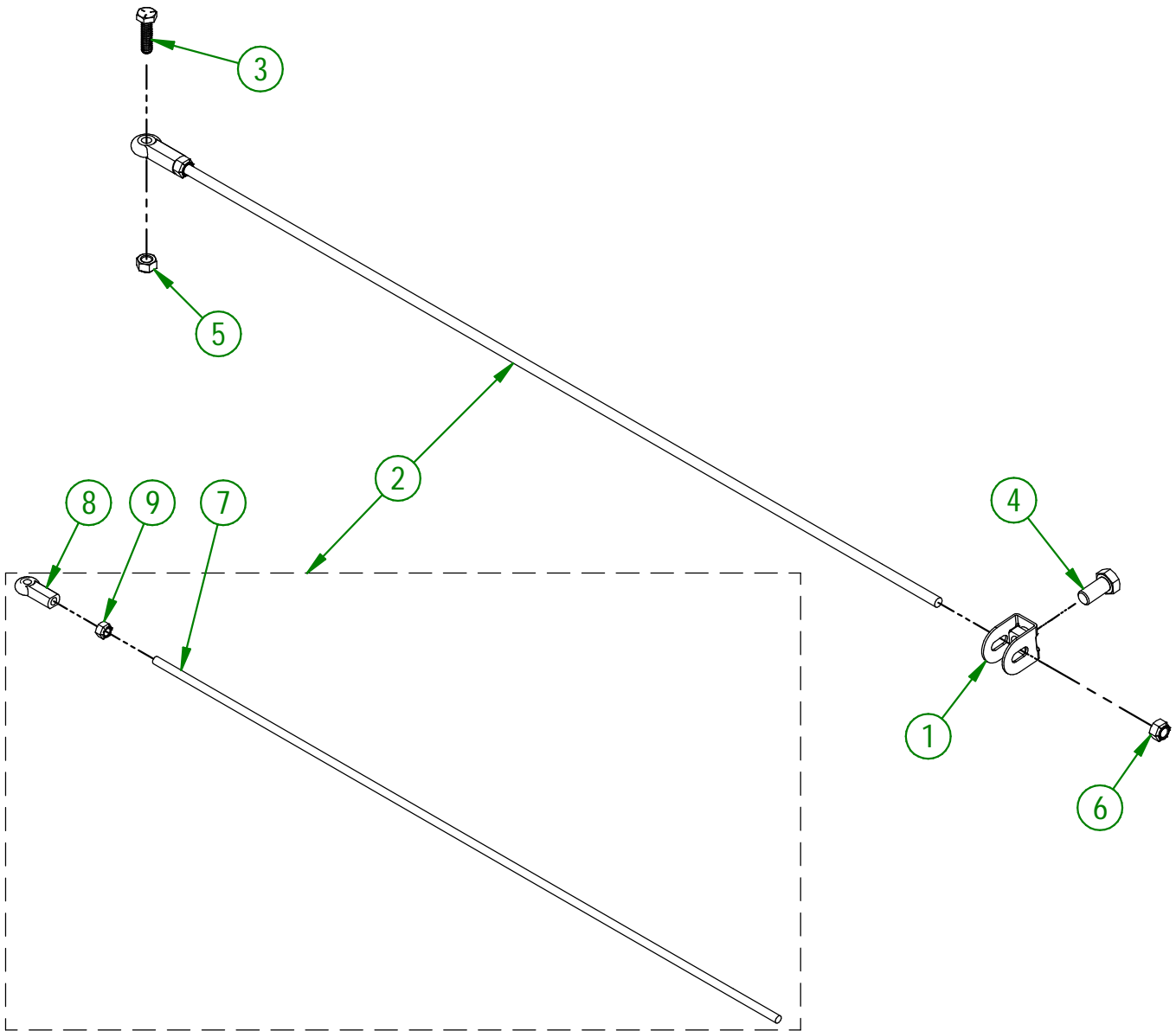
AGRIMETAL	
RELEASE LEVER SUPPORT ASSEMBLY	
CREATION : 01/03/19	ASSEMBLY : 75-55-0035
REVISION : 23/02/26	AUTHOR : F.HÉLIE

75-57-0135

#	PART #	Qty	TITLE
1	75-50-0020	1	CLUTCH ADJUSTABLE CABLE COLAR
2	75-55-0065	1	CLUTCH ROD ASSEMBLY
3	NC01-25-0006	1	HEX. BOLT GR5 1/4-20 X 1"
4	NC01-25-0112	1	HEX BOLT ZINC 3/8-16 X 3/4"
5	NC01-96-0009	1	NYLON-INSERT LOCKNUT ZINC 1/4-20
6	NC01-97-0004	1	NYLON-INSERT LOCKNUT ZINC 1/4-28

75-55-0065

#	PART #	Qty	TITLE
7	75-13-0100	1	CLUTCH ROD
8	NC01-67-0102	1	INTERNALLY THREADED BALL JOINT ROD END 1/4-28
9	NC02-10-0016	1	HEX LOCKNUT NF ZINC 1/4-28



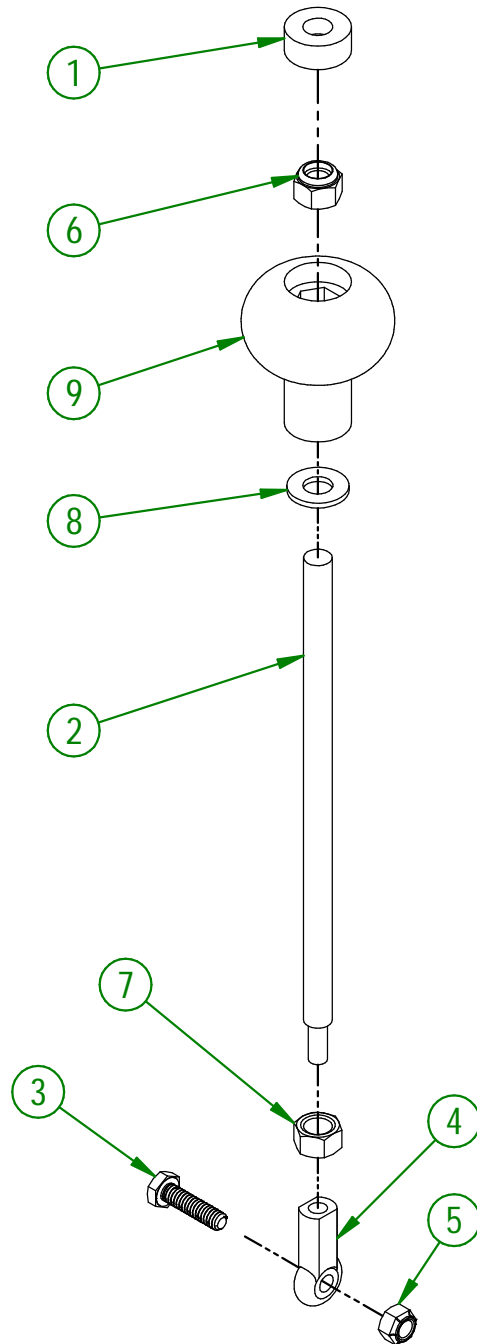
AGRIMETAL
CLUTCH ROD GROUP

CREATION : 04/03/19
REVISION : 23/02/26

ASSEMBLY : **75-57-0135**
AUTHOR : F.HÉLIE

75-57-0140

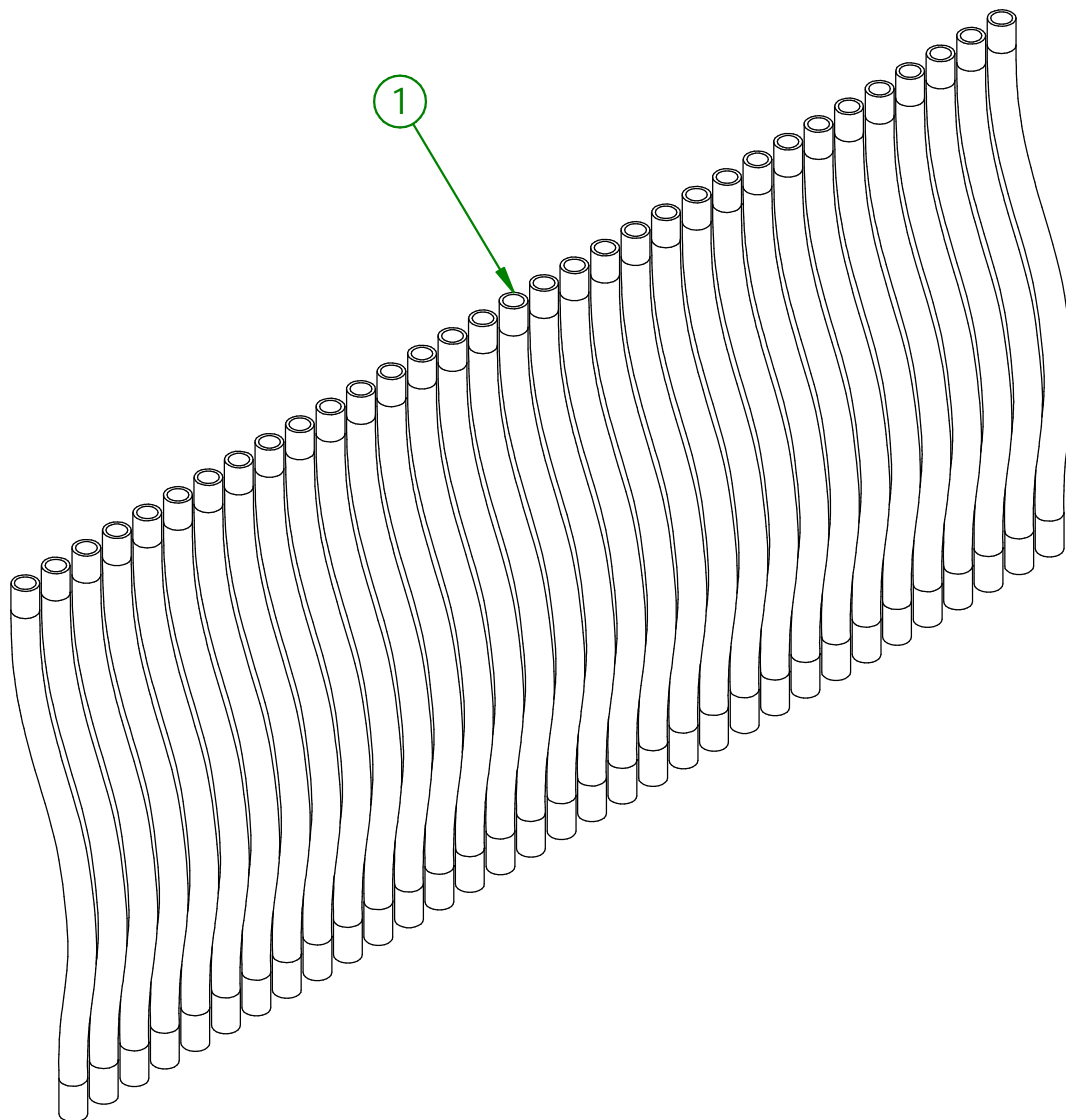
#	PART #	Qty	TITLE
1	75-21-0005	1	HANDLE BLACK KNOB INSERT
2	75-31-0100	1	ADJUSTABLE SCREW
3	NC01-25-0006	1	HEX. BOLT GR5 1/4-20 X 1"
4	NC01-67-0102	1	INTERNALLY THREADED BALL JOINT ROD END 1/4-28
5	NC01-96-0009	1	NYLON-INSERT LOCKNUT ZINC 1/4-20
6	NC01-96-0011	1	NYLON NUT 3/8-16
7	NC02-07-0018	1	HEX. NUT ZINC 3/8-16
8	NC02-25-0009	1	FLAT WASHER 14 GA X 13/16"OD X 25/64" ID
9	NC17-46-0018	1	HANDLE KNOB



AGRIMETAL	
REAR WHEEL ADJUSTABLE SCREW GROUP	
CREATION : 04/03/19	ASSEMBLY : 75-57-0140
REVISION : 20/02/26	AUTHOR : F.HÉLIE

75-57-0145

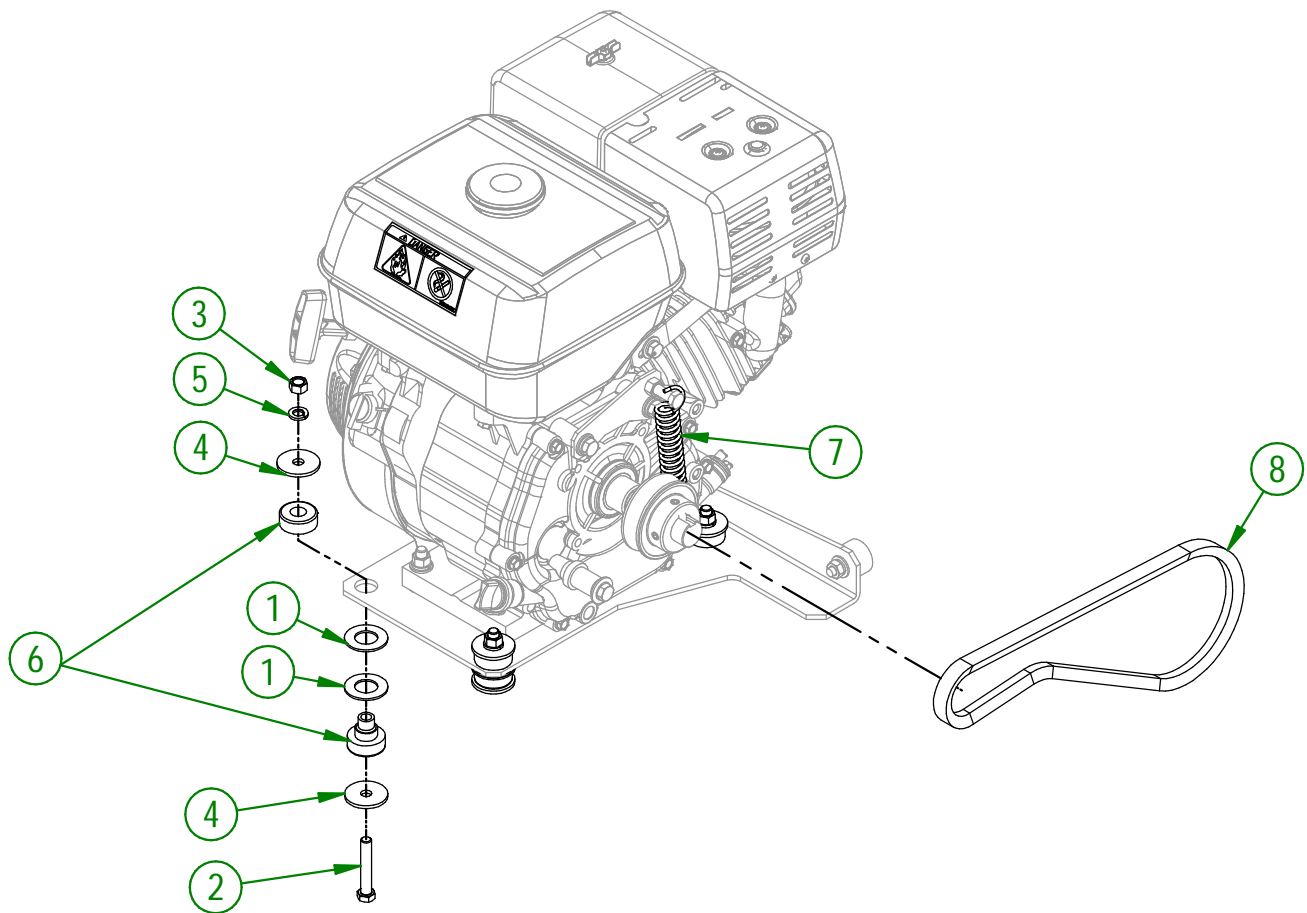
#	PART #	Qty	TITLE
1	75-46-0525	33	SEED URETHANE TUBE



AGRIMETAL	
SEED DISTRIBUTOR TUBE GROUP	
CREATION : 04/03/19	ASSEMBLY : 75-57-0145
REVISION : 23/02/26	AUTHOR : F.HÉLIE

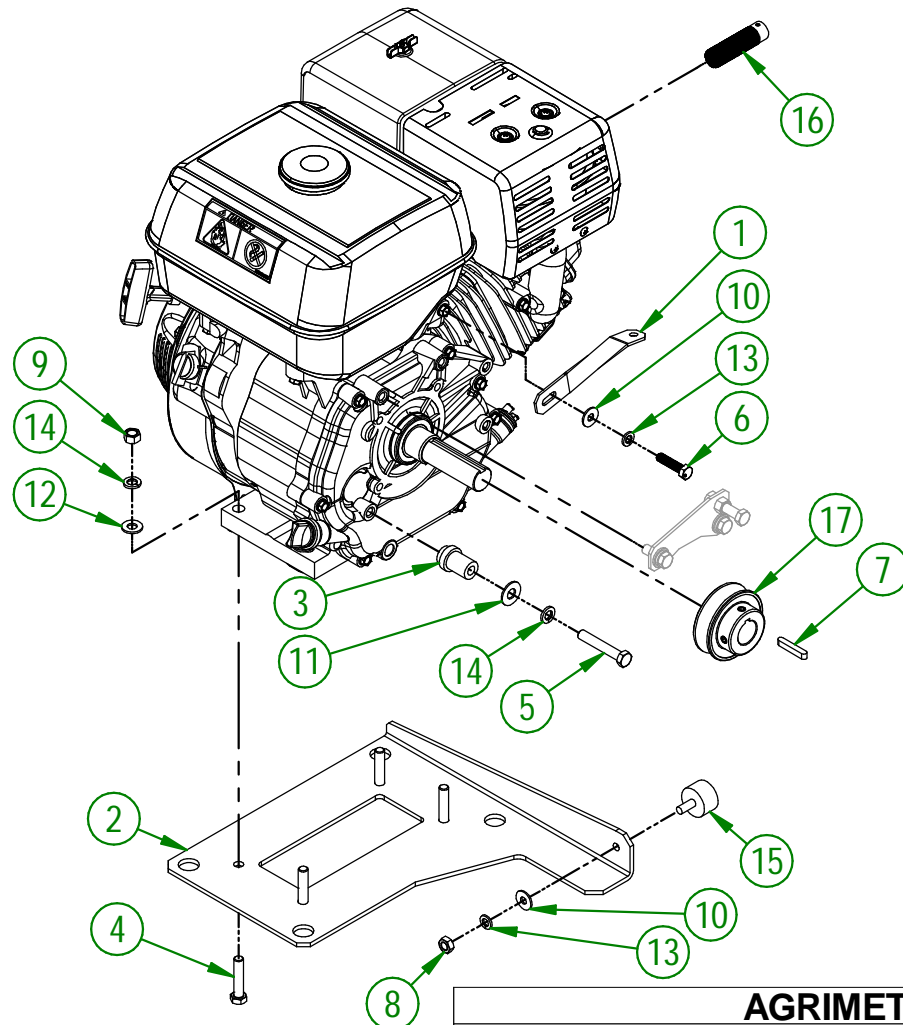
75-57-0150

#	PART #	Qty	TITLE
1	26-03-4800	8	WASHER
2	NC01-25-0119	4	HEX. BOLT GR5 NC ZINC 3/8-16 X 2"
3	NC02-07-0018	4	HEX. NUT ZINC 3/8-16
4	NC02-26-0504	8	WASHER
5	NC02-32-0012	4	LOCK WASHER ZINC 3/8"
6	NC13-15-0059	4	YELLOW RUBBER BASE MOUNT
7	NC13-85-0008	1	GALVANISED SPRING
8	NC14-25-1071	1	V BELT 21/32" (BX-32)



AGRIMETAL	
HONDA 9 H.P.(MANUAL) MOTOR GROUP	
CREATION : 04/03/19	ASSEMBLY : 75-57-0150
REVISION : 20/02/26	AUTHOR : F.HÉLIE

#	PART #	Qty	TITLE
1	01-03-5405	1	MUFFLER SUPPORT
2	75-04-0025	1	MOTOR BASE (9 HP)
3	75-13-1425	1	MOTOR (9 HP) TENSIONER SHAFT
4	NC01-25-0117	4	HEX. BOLT GR5 ZINC 3/8-16 X 1 3/4" LG
5	NC01-25-0119	1	HEX. BOLT GR5 NC ZINC 3/8-16 X 2"
6	NC01-45-0188	1	BOLT MET.GR2 NF ZINC 8MM X 35MM
7	NC01-65-0087	1	KEY 1/4 X 1/4 X 1 1/2"
8	NC02-07-0017	1	HEX. NUT 5/16-18
9	NC02-07-0018	4	HEX. NUT ZINC 3/8-16
10	NC02-22-0008	2	WASHER ZINC 5/16"
11	NC02-22-0010	1	WASHER 13/32" ID
12	NC02-25-0009	4	FLAT WASHER 14 GA X 13/16"OD X 25/64" ID
13	NC02-32-0011	2	LOCK WASHER ZINC 5/16"
14	NC02-32-0012	5	LOCK WASHER ZINC 3/8"
15	NC13-15-0034	1	RUBBER ABSORBER
16	NC13-37-0519	1	ARRESTER SPARK
17	NC14-62-0212	1	MB30X1/2 PULLEY

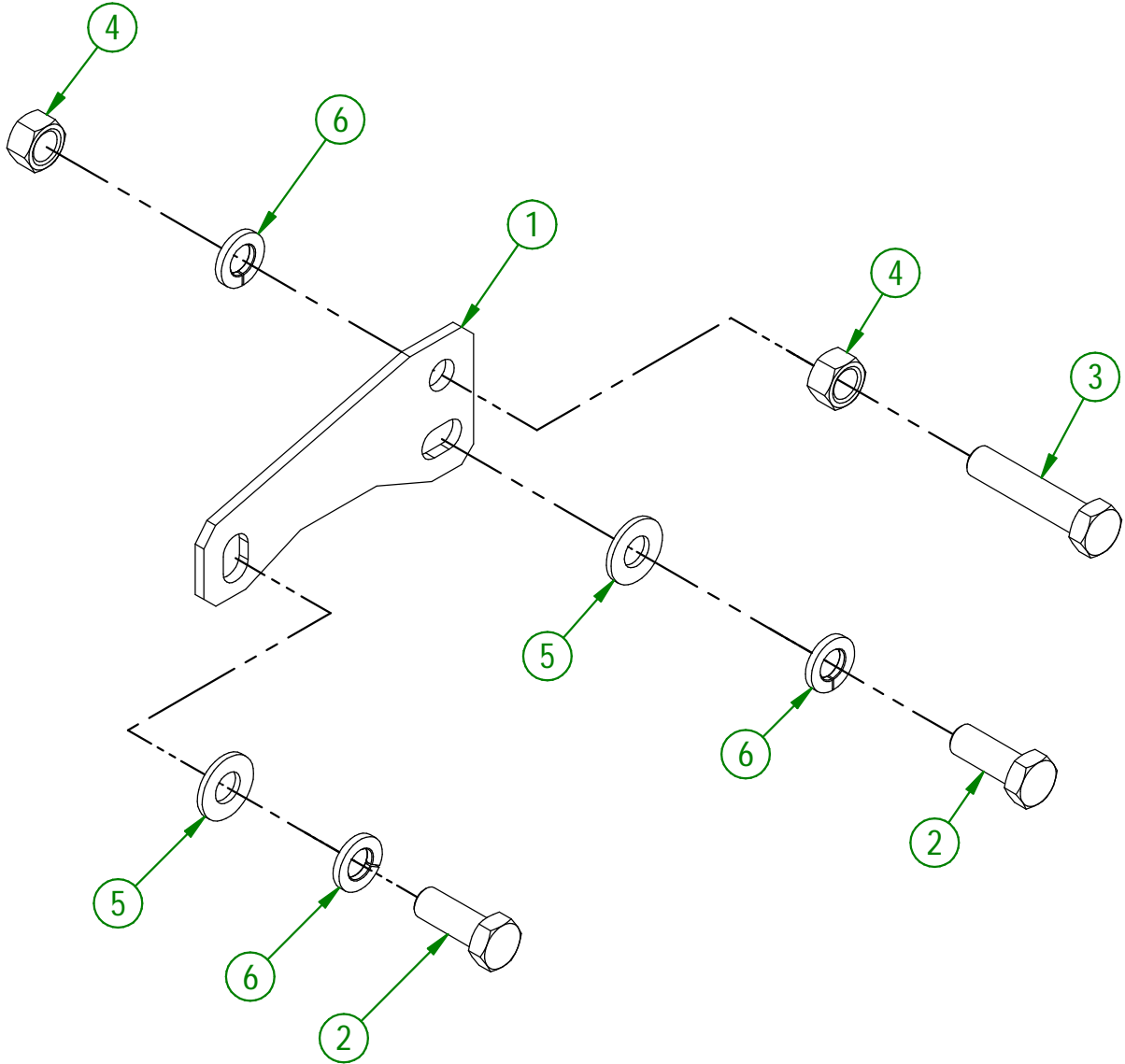
**AGRIMETAL****HONDA (MANUAL) MOTOR 9 H.P. ASSEMBLY**

CREATION : 04/03/19
 REVISION : 23/02/26

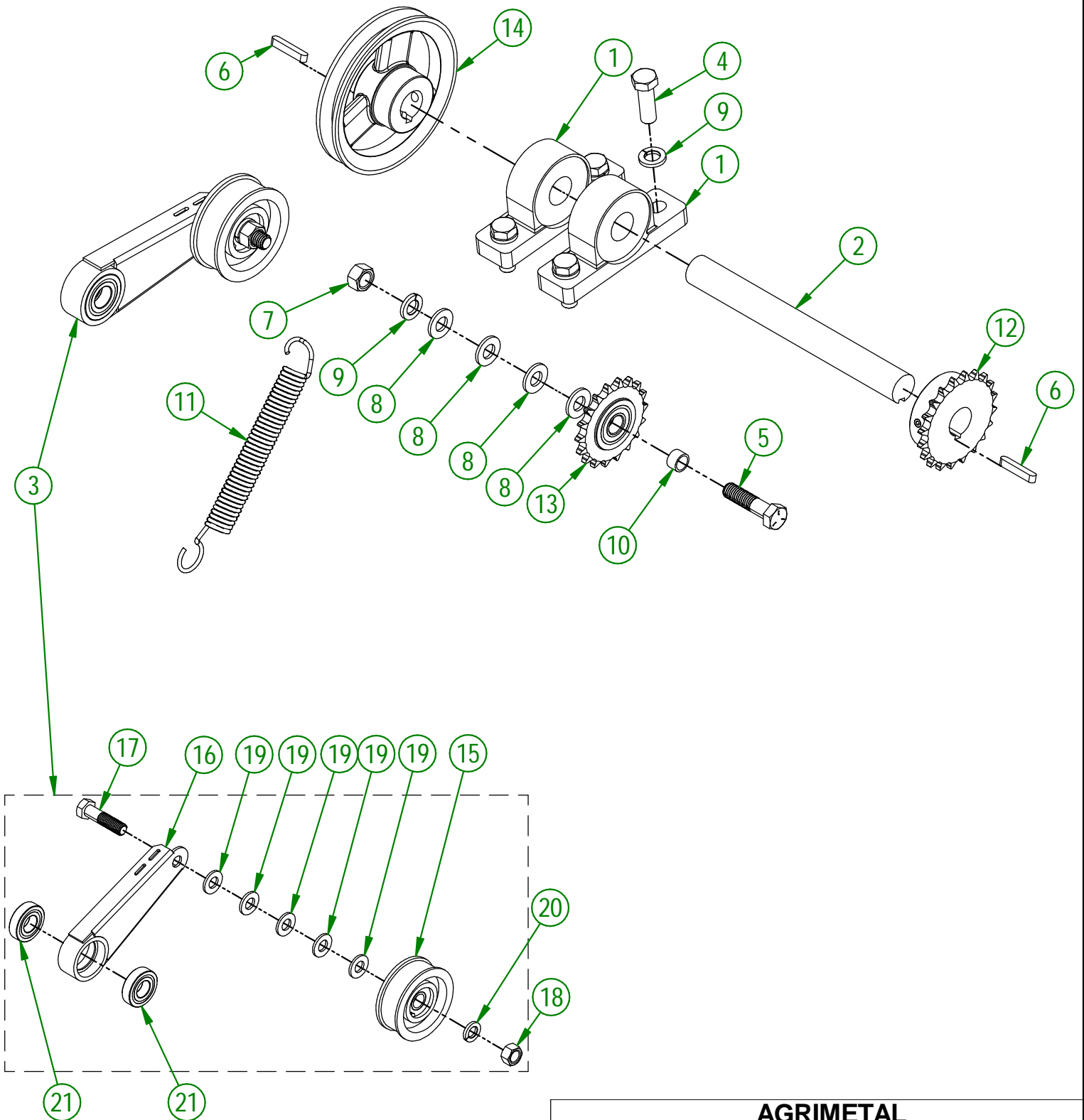
ASSEMBLY : **75-55-0025**
 AUTHOR : F.HÉLIE

75-57-0190

#	PART #	Qty	TITLE
1	75-01-0980	1	TENSIONER SPRING SUPPORT
2	NC01-25-0114	2	HEX. BOLT GR5 ZINC 3/8-16 X 1"
3	NC01-25-0117	1	HEX. BOLT GR5 ZINC 3/8-16 X 1 3/4" LG
4	NC02-07-0018	2	HEX. NUT ZINC 3/8-16
5	NC02-25-0009	2	FLAT WASHER 14 GA X 13/16"OD X 25/64" ID
6	NC02-32-0012	3	LOCK WASHER ZINC 3/8"



AGRIMETAL	
TENSIONER SPRING SUPPORT GROUP	
CREATION : 04/03/19	ASSEMBLY : 75-57-0190
REVISION : 23/02/26	AUTHOR : F.HÉLIE



AGRIMETAL
ROTOR DRIVE GROUP

CREATION : 04/03/19
 REVISION : 20/02/26

ASSEMBLY : **75-57-0155**
 AUTHOR : F.HÉLIE

75-57-0155

#	PART #	Qty	TITLE
1	03-38-0000	2	PILLOW BLOCK UCP205-16 X 1" ID
2	75-13-1410	1	INTERMEDIATE SHAFT
3	75-55-0095	1	BELT TENSIONER ARM
4	NC01-25-0249	4	HEX. BOLT GR5 ZINC 1/2-13 X 1 1/2" LG
5	NC01-25-0251	1	HEX.BOLT GR5 NC ZINC 1/2-13 X 2"
6	NC01-65-0087	2	KEY 1/4 X 1/4 X 1 1/2"
7	NC02-07-0020	1	HEX. NUT ZINC 1/2-13
8	NC02-25-0011	4	WASHER SAE ZINC 17/32 ID
9	NC02-32-0014	5	LOCK WASHER ZINC 1/2"
10	NC13-80-0061	1	PAD STEEL POWDER 1/2" X 5/8" X 3/8"
11	NC13-85-0008	1	GALVANISED SPRING
12	NC14-55-0254	1	SPROCKET 40B20 X Ø 1" K.W. 1/4" 2SS
13	NC14-55-0305	1	SPROCKET 40C18H X 6202 X Ø 5/8" SPEC.
14	NC14-62-0213	1	PULLEY (MB55 X Ø 1" KW 1/4" 2 SS)

75-55-0095

#	PART #	Qty	TITLE
15	01-39-0600	1	IDLER PULLEY PI-300 ASSY
16	75-50-0065	1	BELT TENSIONER
17	NC01-25-0251	1	HEX.BOLT GR5 NC ZINC 1/2-13 X 2"
18	NC02-07-0020	1	HEX. NUT ZINC 1/2-13
19	NC02-25-0011	5	WASHER SAE ZINC 17/32 ID
20	NC02-32-0014	1	LOCK WASHER ZINC 1/2"
21	NC14-75-0110	2	BALL BEARING R12 2RS

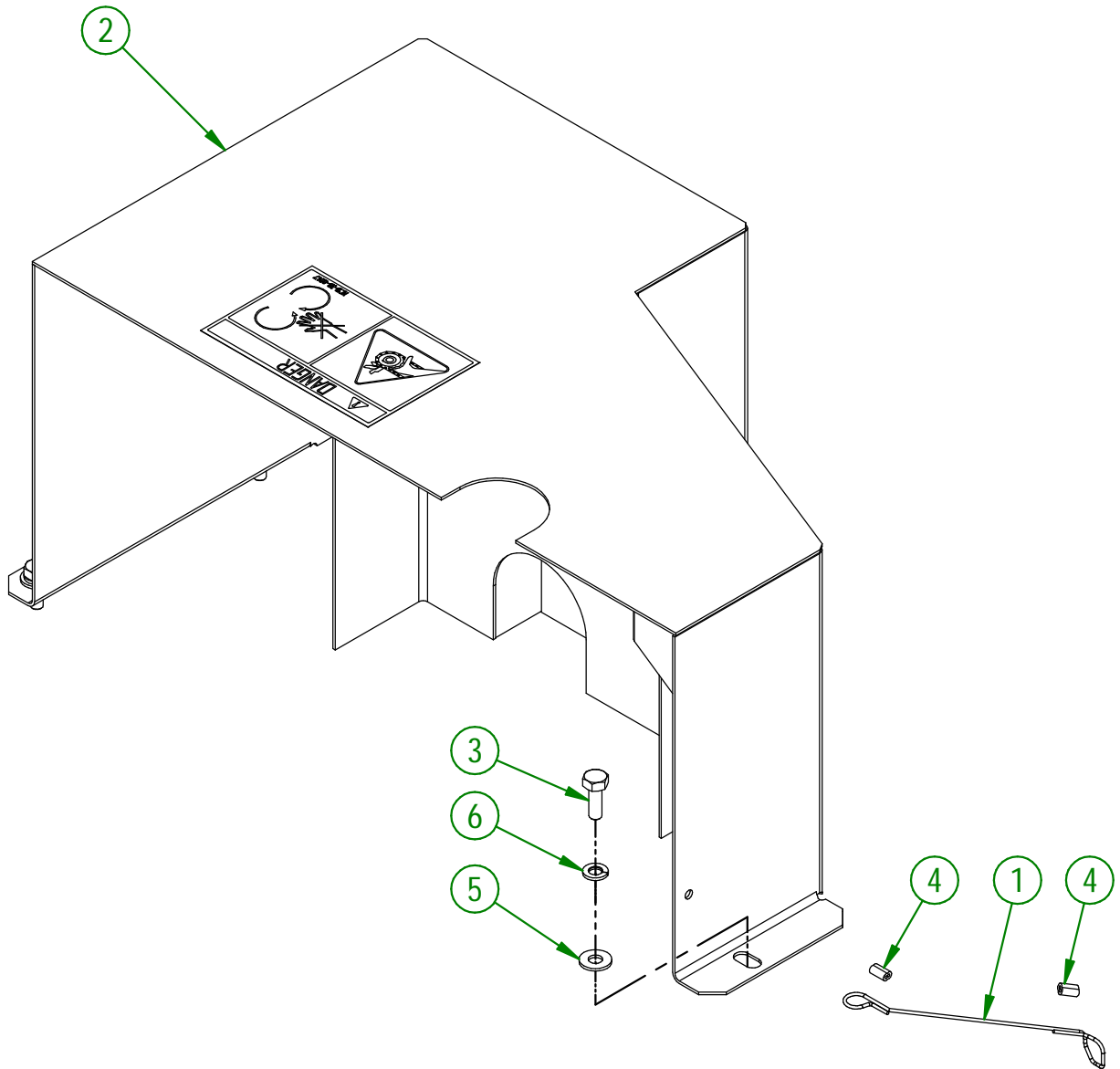
AGRIMETAL
ROTOR DRIVE GROUP

CREATION : 04/03/19
REVISION : 20/02/26

ASSEMBLY : **75-57-0155**
AUTHOR : F.HÉLIE

75-57-0165

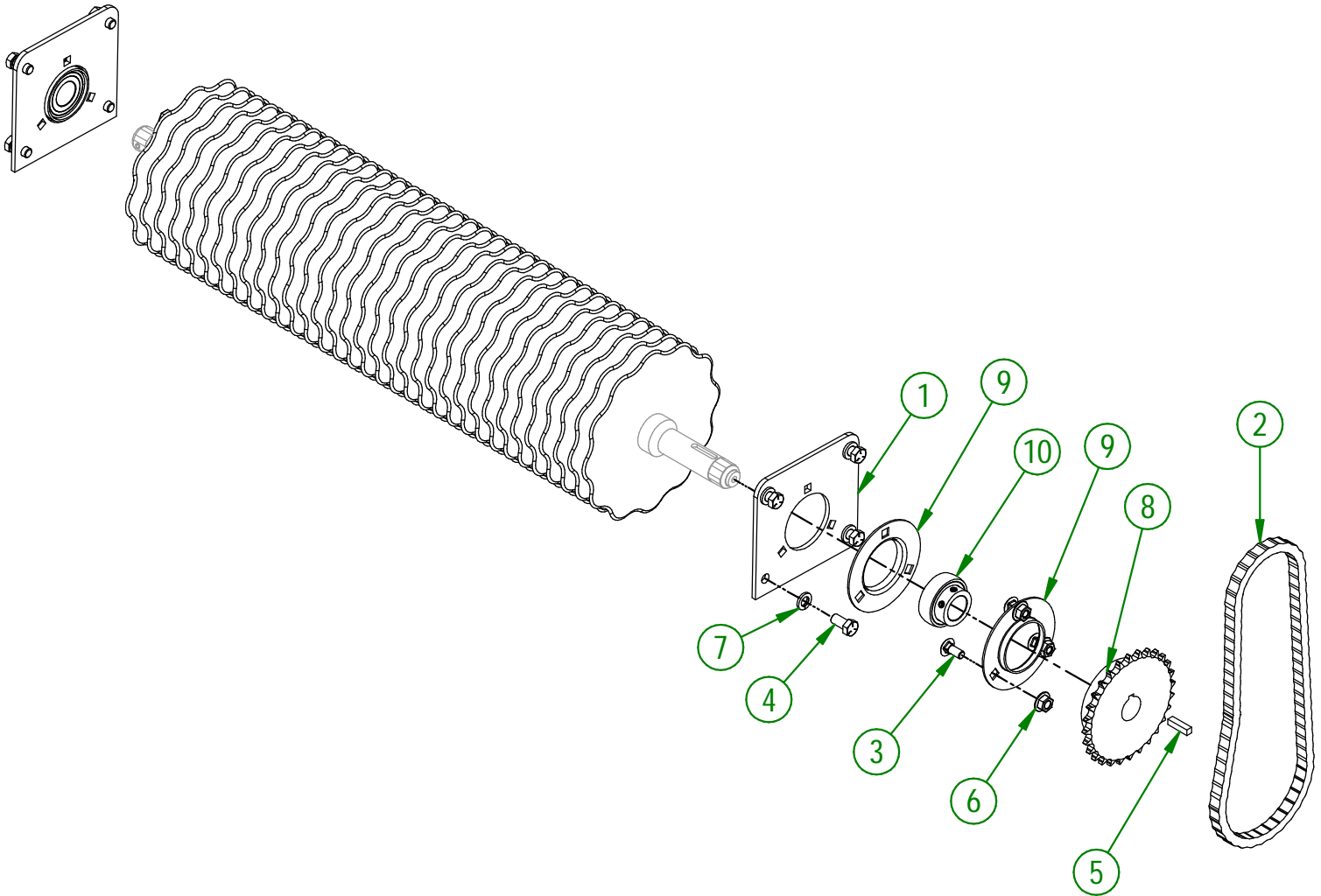
#	PART #	Qty	TITLE
1	75-41-0135	1	BELT GUARD WIRE Ø1/16 X 18" LG.
2	75-57-0170	1	BELT GUARD GROUP (STICKER INCLUDED)
3	NC01-25-0004	3	HEX. BOLT GR5 ZINC 1/4-20 X 3/4"
4	NC01-64-0005	2	OVAL SLEEVE (ALUMINUM)
5	NC02-25-0007	3	WASHER ZINC 0.281 = 9/32
6	NC02-32-0010	3	LOCK WASHER ZINC 1/4"



AGRIMETAL	
BELT GUARD GROUP	
CREATION : 04/03/19	ASSEMBLY : 75-57-0165
REVISION : 20/02/26	AUTHOR : F.HÉLIE

75-57-0176

#	PART #	Qty	TITLE
1	75-04-0035	2	ROTOR BEARING PLATE
2	75-37-1010	1	CHAIN #40 X 30" + 1 LINK
3	NC01-07-0056	6	CARR. BOLT GR5 NC ZINC 5/16-18 X 3/4"
4	NC01-25-0112	8	HEX BOLT ZINC 3/8-16 X 3/4"
5	NC01-65-0095	1	SQUARE KEY 1/4" X 1"
6	NC02-14-0006	6	HEX. NUT SPECIAL FLANGET NC 5/16-18 B GRADE
7	NC02-32-0012	8	LOCK WASHER ZINC 3/8"
8	NC14-55-0250	1	SPROCKET 40B28H X 1" (K.W. 1/4" 2SS)
9	NC14-75-0009	4	PRESSED STEEL FLANGED HOUSING F5 O.D. 3 3/4"
10	NC14-75-0016	2	SEAL BALL BEARING SB 205-16



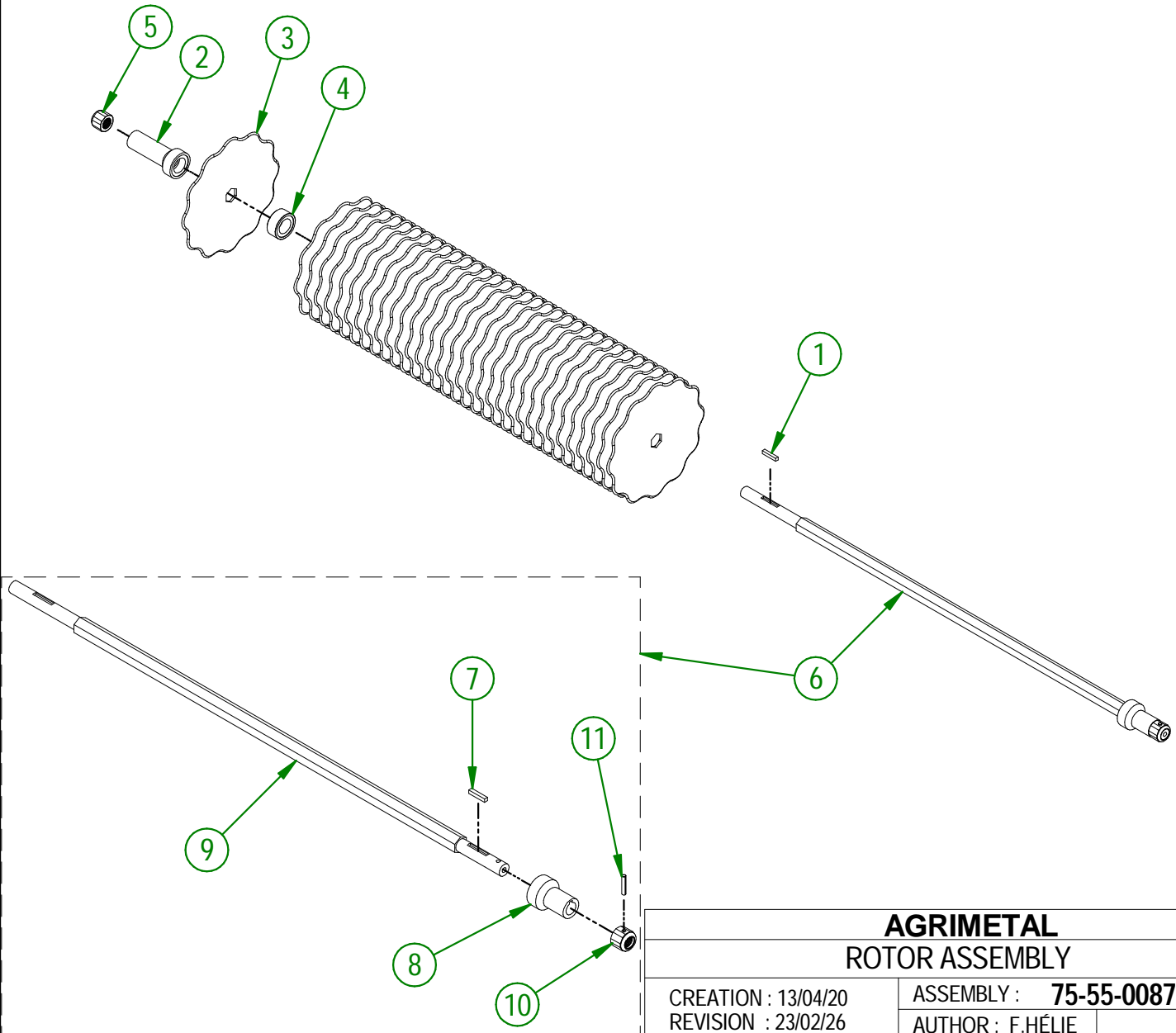
AGRIMETAL	
ROTOR GROUP	
CREATION : 13/04/20	ASSEMBLY : 75-57-0176
REVISION : 20/02/26	AUTHOR : F.HÉLIE

75-55-0087

#	PART #	Qty	TITLE
1	47-41-0900	1	SQUARE KEY
2	75-13-2000	1	ROTOR DRIVE TIP
3	75-20-0935	33	ROTOR BLADE OVERSEEDER-B
4	75-21-0057	32	BLADE BUSHING 0.110" X 3/4" C/C
5	75-32-9950	1	ROTOR NYLON INSERT LOCKNUT
6	75-55-0081	1	ROTOR SHAFT

75-55-0081

#	PART #	Qty	TITLE
7	47-41-0900	1	SQUARE KEY
8	75-13-2005	1	ROTOR LOCK TIP
9	75-25-2400	1	ROTOR SHAFT
10	75-32-9950	1	ROTOR NYLON INSERT LOCKNUT
11	NC01-69-0419	1	SPRING TIGHTENER PIN ZINC 3/16 XI"



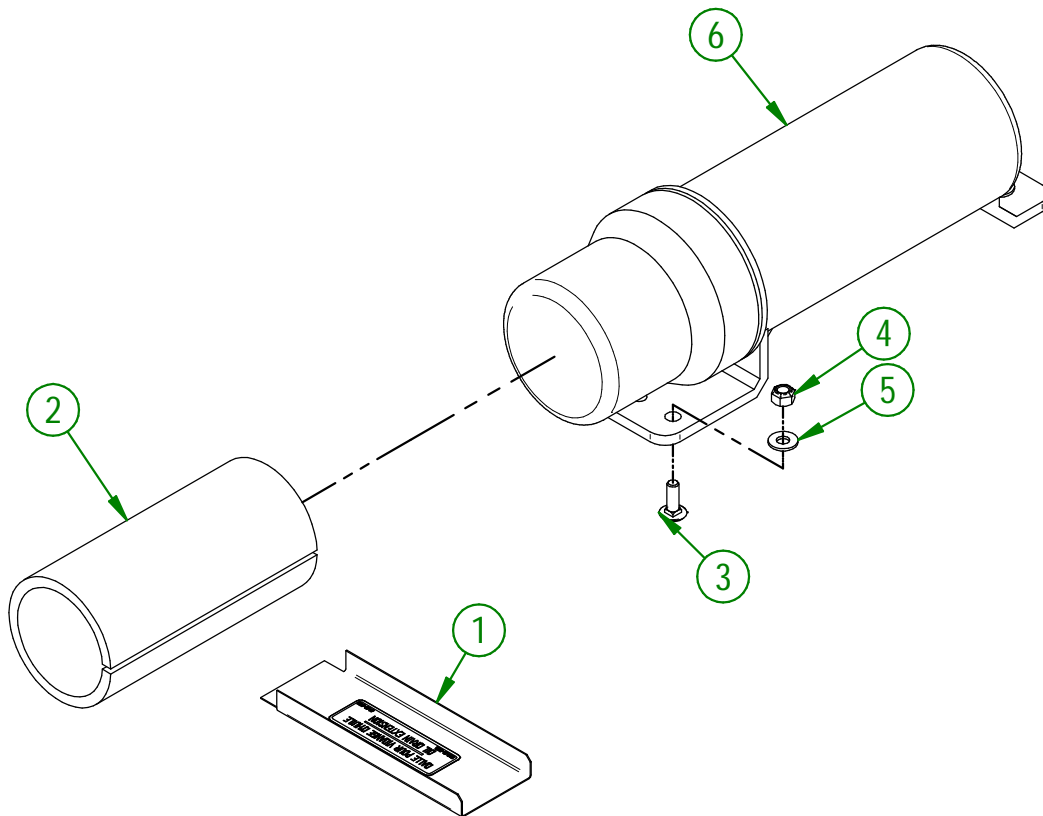
AGRIMETAL
ROTOR ASSEMBLY

CREATION : 13/04/20
REVISION : 23/02/26

ASSEMBLY : **75-55-0087**
AUTHOR : F.HÉLIE

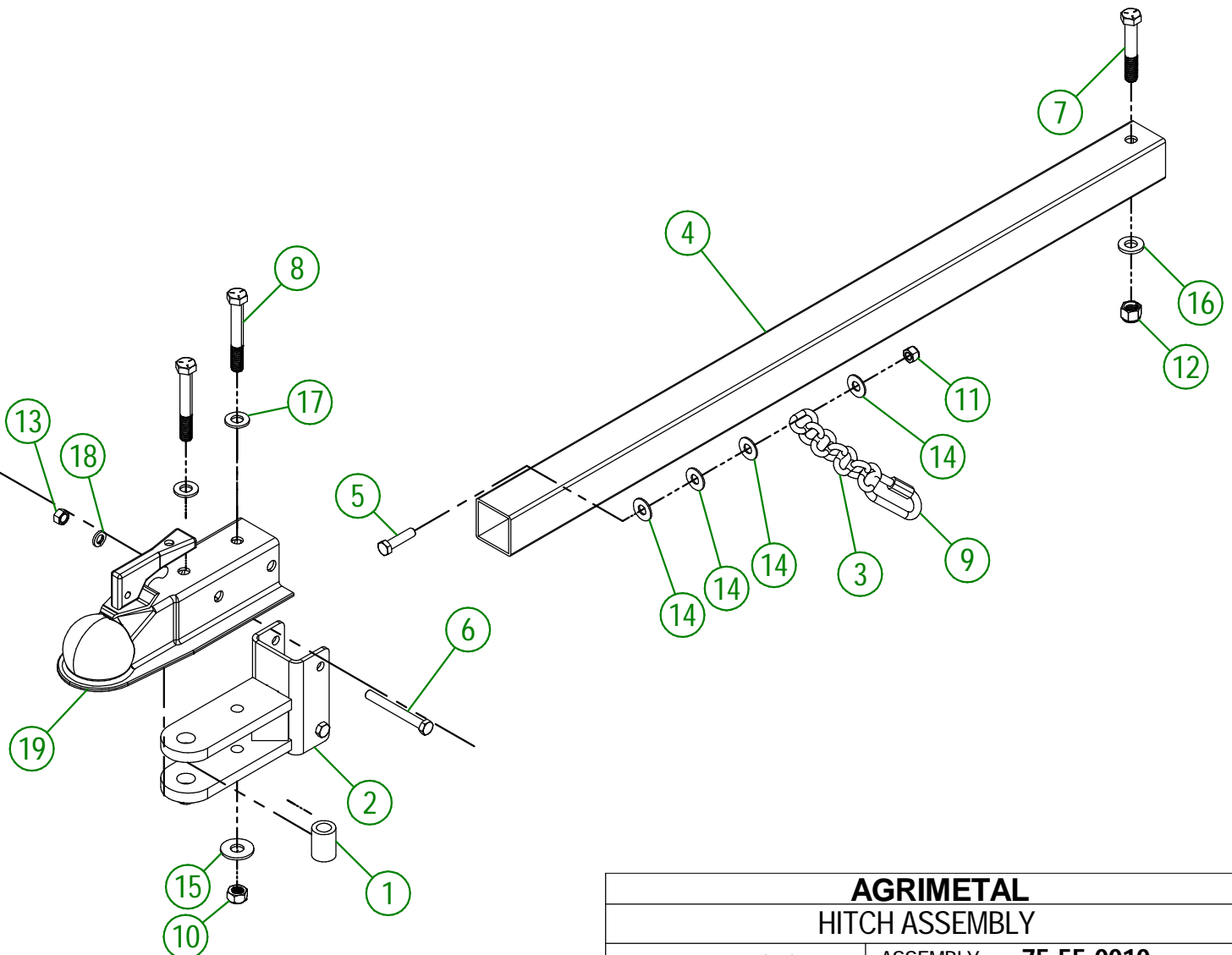
75-57-0178

#	PART #	Qty	TITLE
1	01-55-0030	1	DRAIN OIL SLAB "STICKER INCLUDED"
2	75-98-0520	1	OPÉR.MAN.OVERSEEDER (ENGLISH)
3	NC01-07-0003	3	CARR. BOLT GR5 ZINC 1/4-20 X 3/4"
4	NC01-96-0009	3	NYLON-INSERT LOCKNUT ZINC 1/4-20
5	NC02-25-0007	3	WASHER ZINC 0.281 = 9/32
6	NC13-30-0237	1	PLASTIC TUBE FOR OPERATOR'S MANUAL



AGRIMETAL	
OPERATOR'S MANUAL GROUP	
CREATION : 16/01/19	ASSEMBLY : 75-57-0178
REVISION : 20/02/26	AUTHOR : F.HÉLIE

#	PART#	QTY	TITLE
1	23-09-0100	1	HITCH SPACER
2	23-50-0045	1	HITCH HAND
3	26-41-0000	1	SAFETY CHAIN 4.8MM X 2/0 X 58" LONG
4	75-50-0040	1	HITCH
5	NC01-25-0116	1	HEX. BOLT GR5 ZINC 3/8-16 X 1 1/2"
6	NC01-25-0123	2	HEX. BOLT GR5 ZINC 3/8-16 X 3 1/4"
7	NC01-25-0255	1	HEX BOLT GR5 ZINC 1/2-13 X 3" LG.
8	NC01-25-0257	2	HEX. BOLT GR5 ZINC 1/2-13 X 3 1/2"
9	NC01-75-0015	1	RAPID LINK DIA. 5/16"-8MM, 1300-1760 LBS WLL
10	NC01-93-0014	2	LOCK NUT ZINC 1/2-13
11	NC01-96-0011	1	NYLON NUT 3/8-16
12	NC01-96-0014	1	NYLON-INSERT LOCKNUT ZINC 1/2-13
13	NC02-07-0018	2	HEX. NUT ZINC 3/8-16
14	NC02-22-0010	4	WASHER 13/32" ID
15	NC02-22-0012	2	WASHER ZINC 1/2 BOLT = 9/16"Ø X 1 3/8" OD
16	NC02-25-0011	1	WASHER SAE ZINC 17/32 ID
17	NC02-25-0011	2	WASHER SAE ZINC 17/32 ID
18	NC02-32-0012	2	LOCK WASHER ZINC 3/8"
19	NC13-80-0290	1	2" HITCH BALL COUPLER

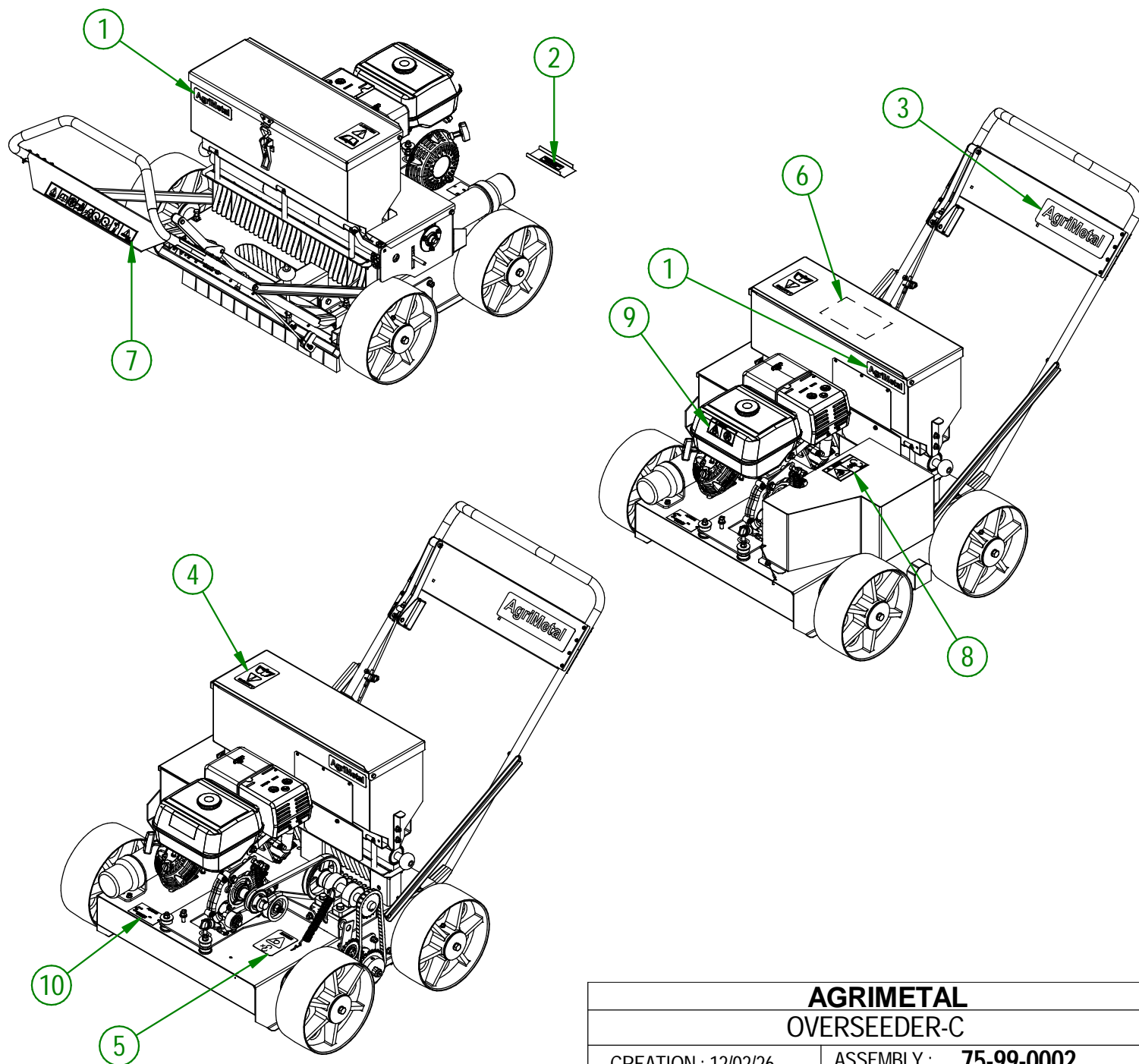


AGRIMETAL
HITCH ASSEMBLY

CREATION : 17/10/18
 REVISION : 23/02/26

ASSEMBLY : **75-55-0010**
 AUTHOR : F.HÉLIE

#	PART #	Qty	TITLE
1	NC13-33-0002	2	STICKER AGRIMETAL
2	NC13-33-0023	1	STICKER OIL DRAIN EXTENSION
3	NC13-33-0035	1	STICKER AGRIMETAL
4	NC13-33-0183	1	STICKER CAUTION OPERATION MANUAL
5	NC13-33-0189	1	STICKER DANGER (PERSON AND CHAIN DRIVE)
6	NC13-33-0197	1	STICKER SEEDING RATE BY SPROCKETS
7	NC13-33-0219	1	STICKER WARNING
8	NC13-33-0247	1	STICKER DANGER
9	NC13-33-0252	1	STICKER (FIRE RISK)
10	NC13-50-0086	1	SERIAL NUMBER PLATE



AGRIMETAL
OVERSEEDER-C

CREATION : 12/02/26
REVISION : 23/02/26

ASSEMBLY : **75-99-0002**
AUTHOR : F.HÉLIE