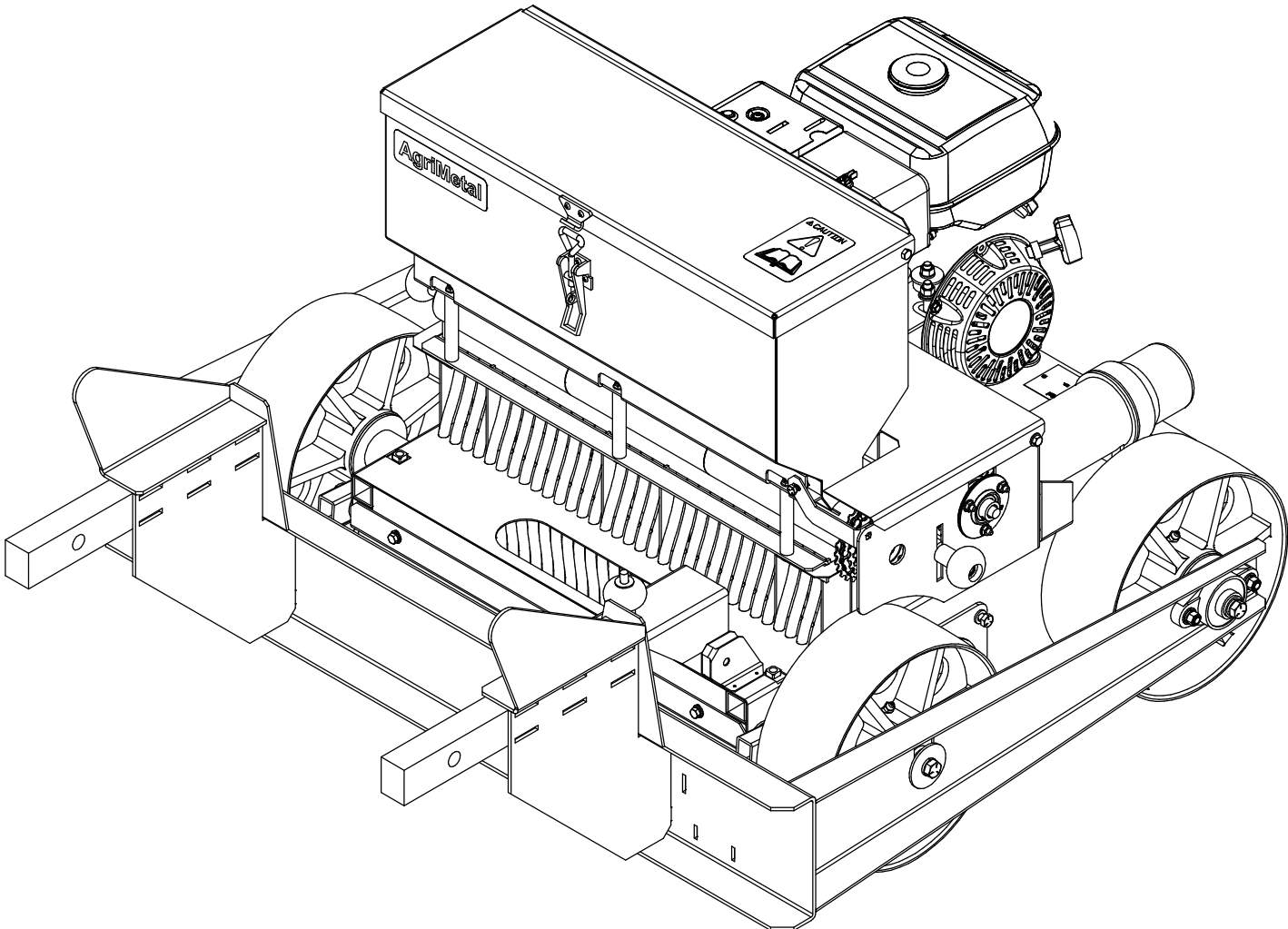
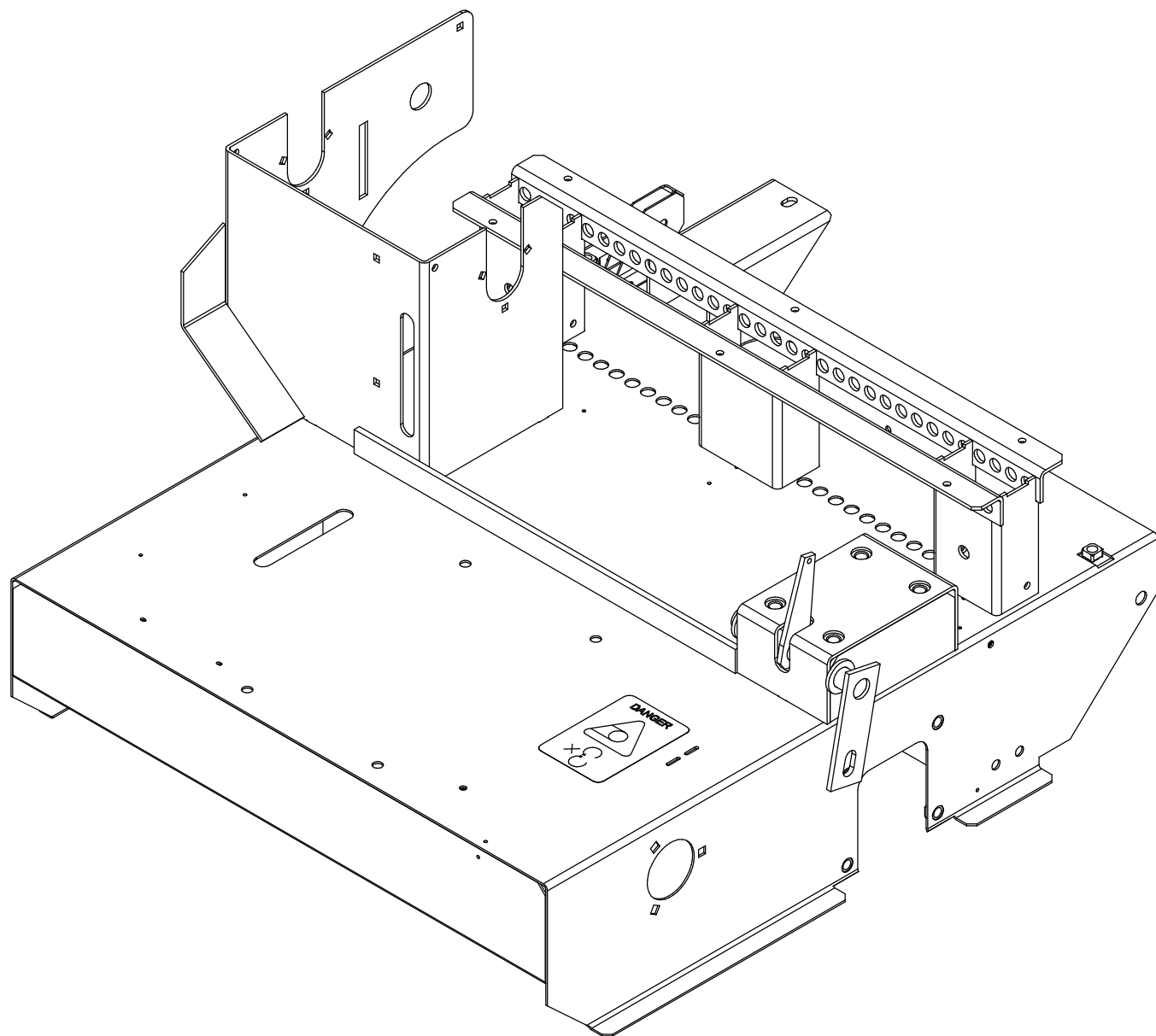


# AgriMetal

## PARTS LIST

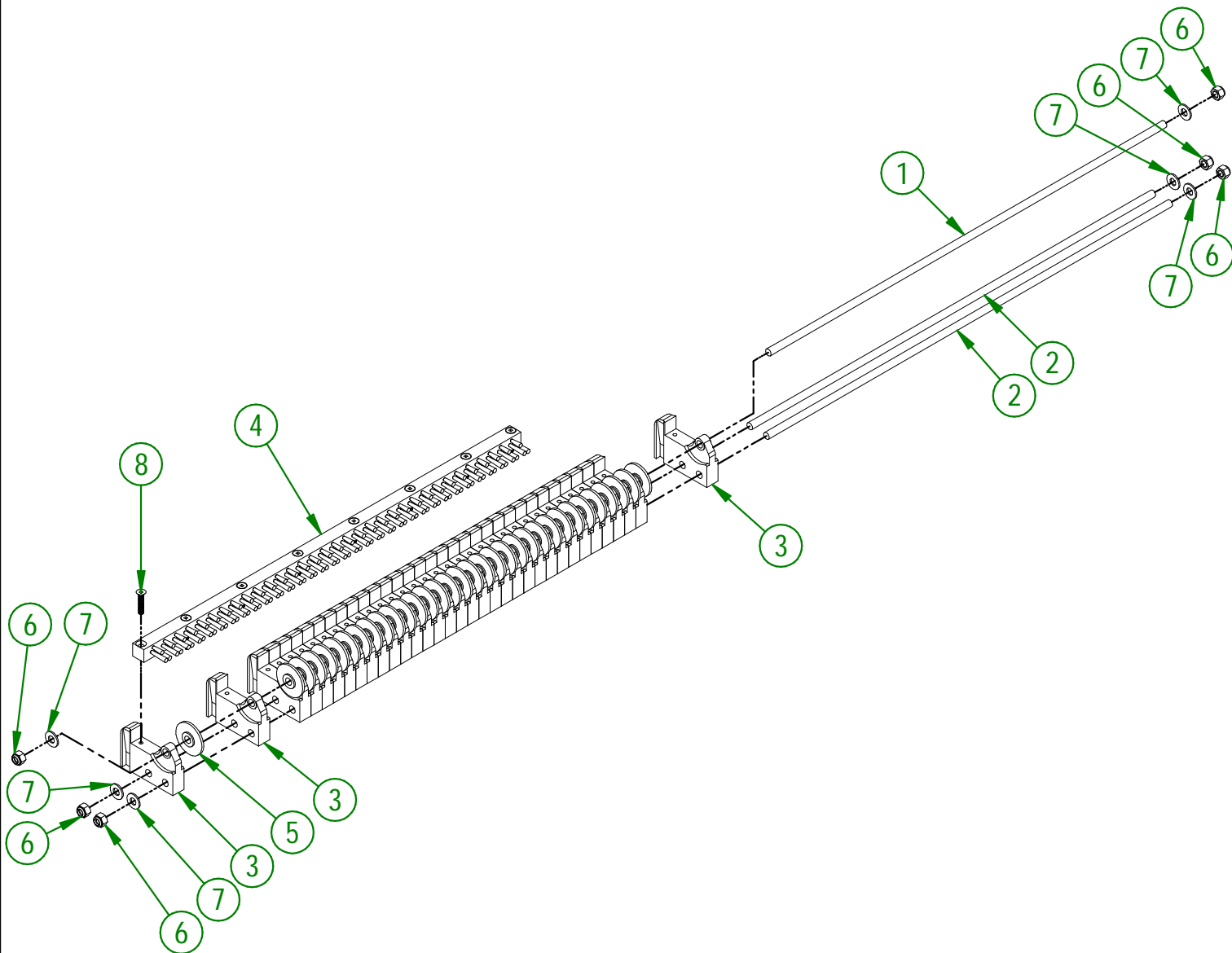


### OVERSEEDER-C (JD-1500)



<b>AGRIMETAL</b>	
FRAME GROUP (STICKER INCLUDED)	
CREATION : 01/03/19	ASSEMBLY : <b>75-57-0000</b>
REVISION : 20/02/26	AUTHOR : F.HÉLIE

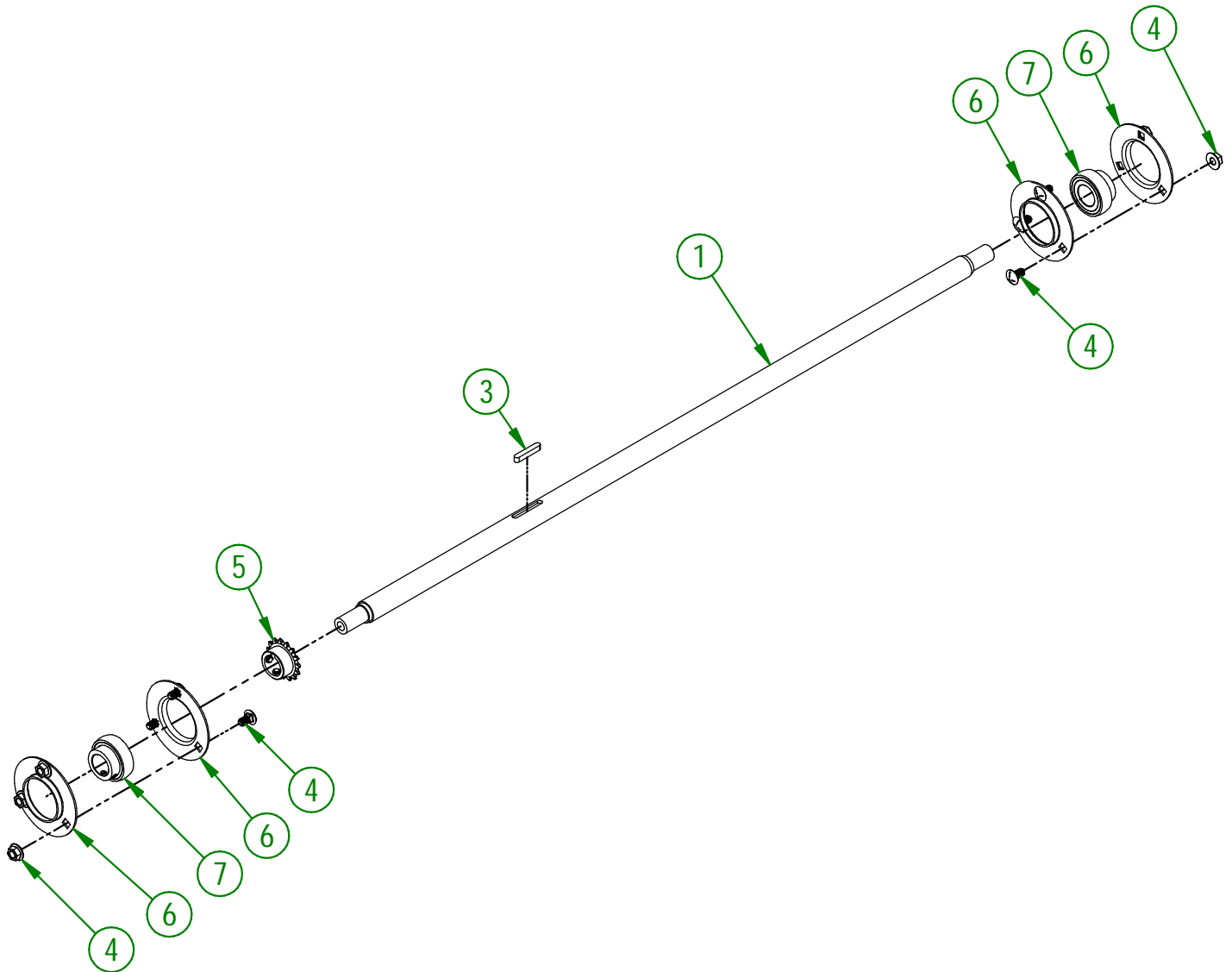
#	PART #	Qty	TITLE
1	75-13-0405	1	SEED DISPENSER WHEEL ROD
2	75-13-0410	2	SEED DISPENSER ROD
3	75-21-0200	34	SEED DISPENSER
4	75-42-0195	1	BRUSH 3/4" X 3/4" X 25 1/4" LG.
5	75-42-0625	33	SEED DISPENSER WASHER
6	NC01-96-0011	6	NYLON NUT 3/8-16
7	NC02-25-0009	6	FLAT WASHER 14 GA X 13/16"OD X 25/64" ID
8	NC02-36-0136	8	FLAT HEAD MACHINE SCREW (SQUARE DRIVE) 1/4-20 X 1 1/4"



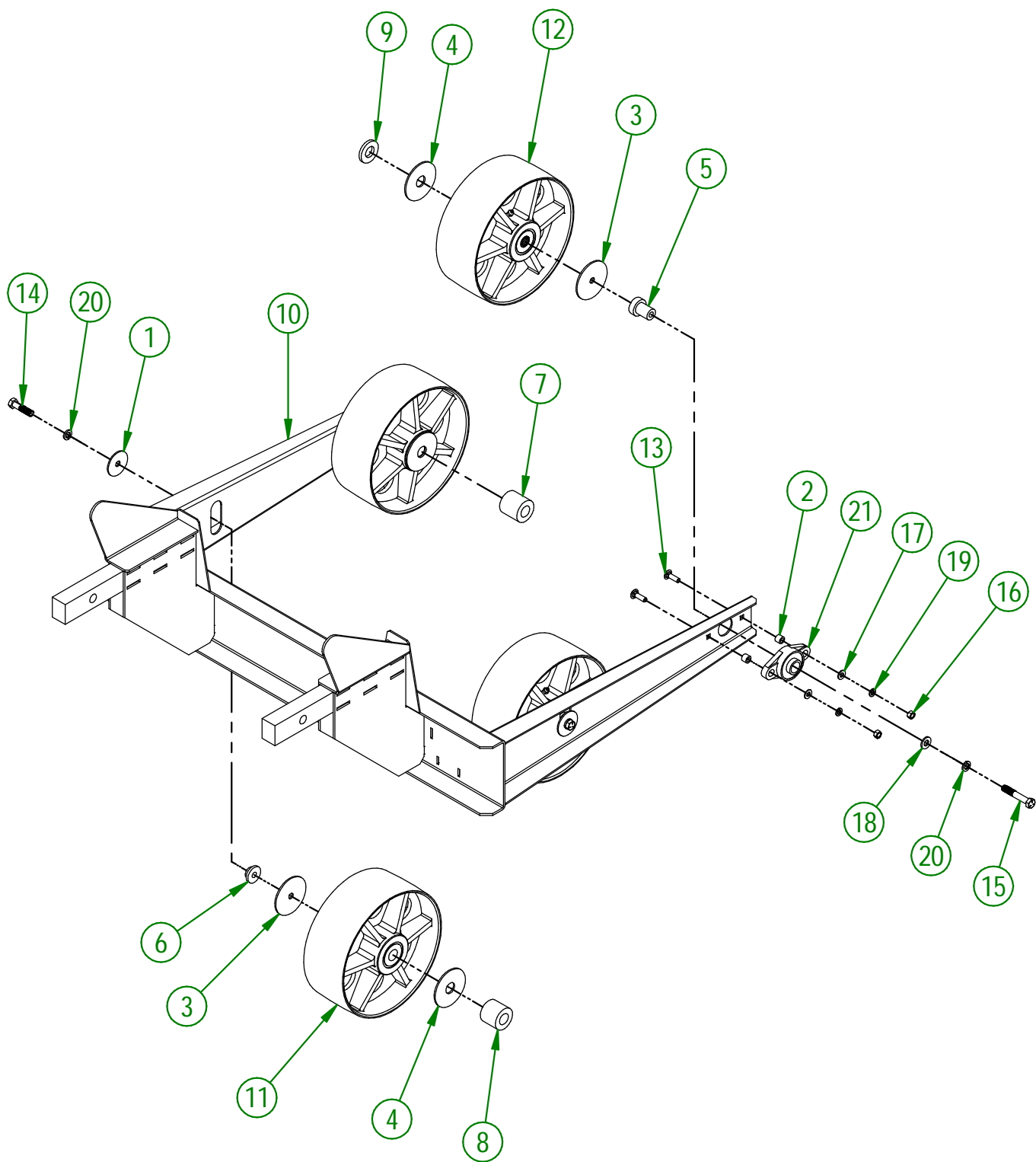
<b>AGRIMETAL</b>	
<b>SEED DISPENSER ASSEMBLY</b>	
CREATION : 01/03/19	ASSEMBLY : <b>75-55-0015</b>
REVISION : 20/02/26	AUTHOR : F.HÉLIE

75-57-0010

#	PART #	Qty	TITLE
1	75-20-0105	1	FRONT WHEEL SHAFT
2	NC01-07-0055	6	CARR. BOLT GR5 NC ZINC 5/16-18 X 5/8'
3	NC01-65-0087	1	KEY 1/4 X 1/4 X 1 1/2"
4	NC02-14-0006	6	HEX. NUT SPECIAL FLANGET NC 5/16-18 B GRADE
5	NC14-55-0244	1	SPROCKET 35BI5H X Ø 1" KW 1/4" 2SS
6	NC14-75-0009	4	PRESSED STEEL FLANGED HOUSING F5 O.D. 3 3/4"
7	NC14-75-0016	2	SEAL BALL BEARING SB 205-16



<b>AGRIMETAL</b>	
<b>FRONT WHEEL SHAFT GROUP</b>	
CREATION : 01/03/19	ASSEMBLY : <b>75-57-0010</b>
REVISION : 20/02/26	AUTHOR : F.HÉLIE



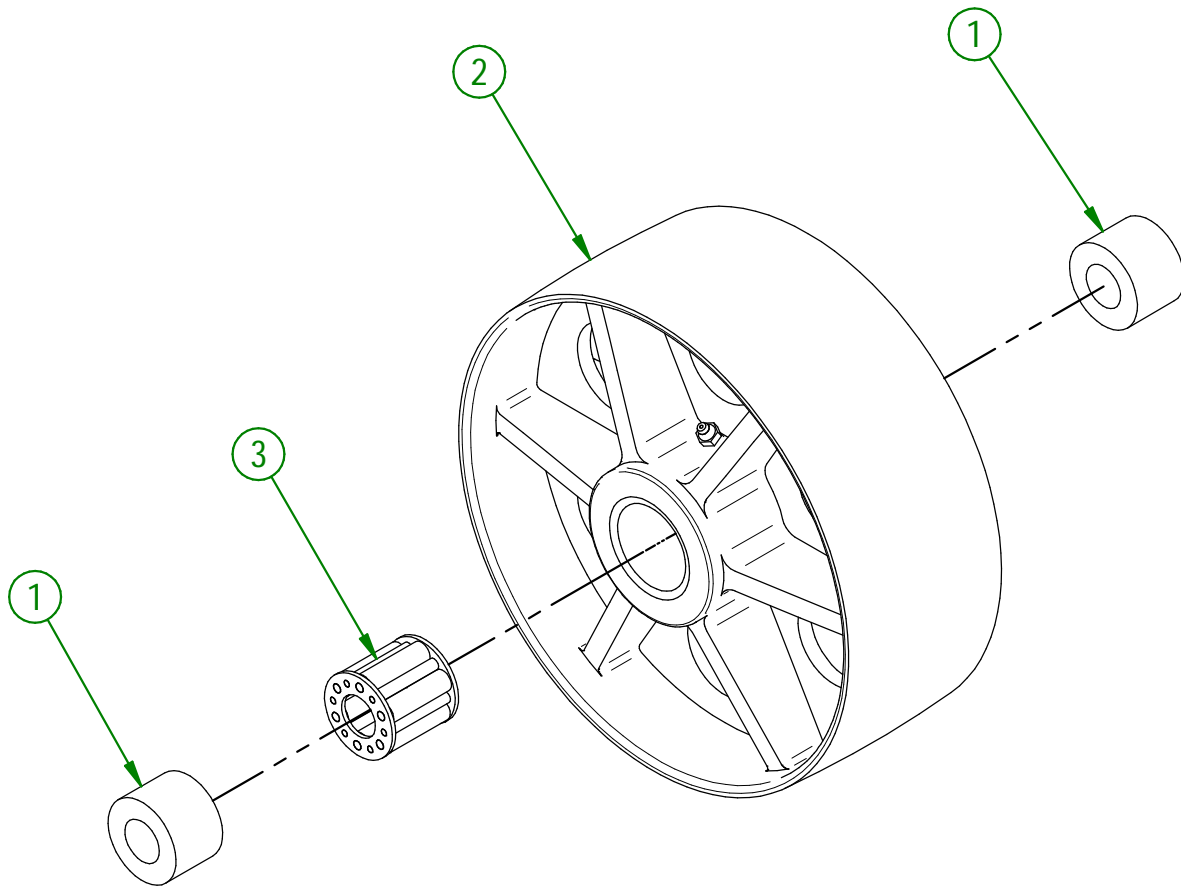
<b>AGRIMETAL</b>	
<b>FRONT ATTACHMENT (JD-1500)</b>	
CREATION : 20/04/20	ASSEMBLY : <b>75-57-0205</b>
REVISION : 20/02/26	AUTHOR : J. Houle

## 75-57-0205

#	PART #	Qty	TITLE
1	01-01-1625	2	FLAT WASHER
2	01-09-0000	4	BEARING RACE (UCFL205-16)
3	75-01-0900	4	WASHER
4	75-01-0902	4	WASHER
5	75-21-0025	2	FRONT ATTACHMENT BUSHING
6	75-21-0030	2	FRONT ATTACHMENT BUSHING
7	75-42-0140	1	LEFT FRONT WHEEL BUSHING
8	75-42-0145	1	LEFT REAR WHEEL BUSHING
9	75-42-0150	1	RIGHT FRONT WHEEL WASHER
10	75-50-0250	1	FRONT ATTACHMENT
11	75-55-0055	2	REAR U.H.M.W BLACK WHEEL
12	75-55-0060	2	FRONT U.H.M.W. BLACK WHEEL
13	NC01-07-0110	4	CARR. BOLT GR5 ZINC 3/8-16 X 1 1/4"
14	NC01-25-0251	2	HEX.BOLT GR5 NC ZINC 1/2-13 X 2"
15	NC01-25-0255	2	HEX BOLT GR5 ZINC 1/2-13 X 3" LG.
16	NC02-07-0018	4	HEX. NUT ZINC 3/8-16
17	NC02-25-0009	4	FLAT WASHER 14 GA X 13/16"OD X 25/64" ID
18	NC02-25-0011	2	WASHER SAE ZINC 17/32 ID
19	NC02-32-0012	4	LOCK WASHER ZINC 3/8"
20	NC02-32-0014	4	LOCK WASHER ZINC 1/2"
21	NC14-75-0019	2	FLANGE PILLOW BLOCK BEARING UCFL205-16 Ø 1"

75-55-0055

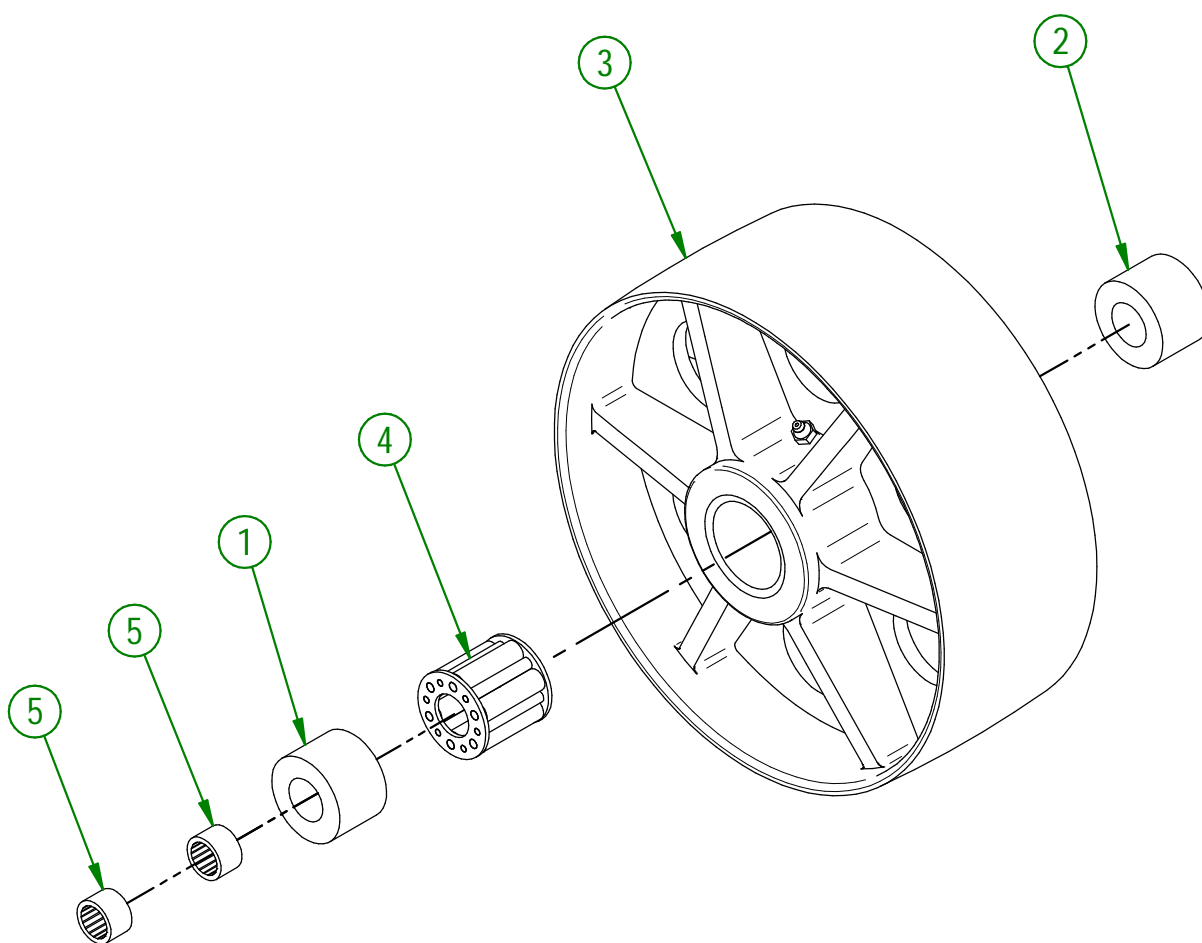
#	PART #	Qty	TITLE
1	75-42-0100	2	PLASTIC WHEEL INTERNAL BUSHING
2	75-55-0050	1	U.H.M.W. BLACK WHEEL
3	NC14-70-0027	1	ROLLER BEARING



<b>AGRIMETAL</b>	
<b>REAR U.H.M.W BLACK WHEEL</b>	
CREATION : 16/04/20	ASSEMBLY : <b>75-55-0055</b>
REVISION : 23/02/26	AUTHOR : J. Houle

75-55-0060

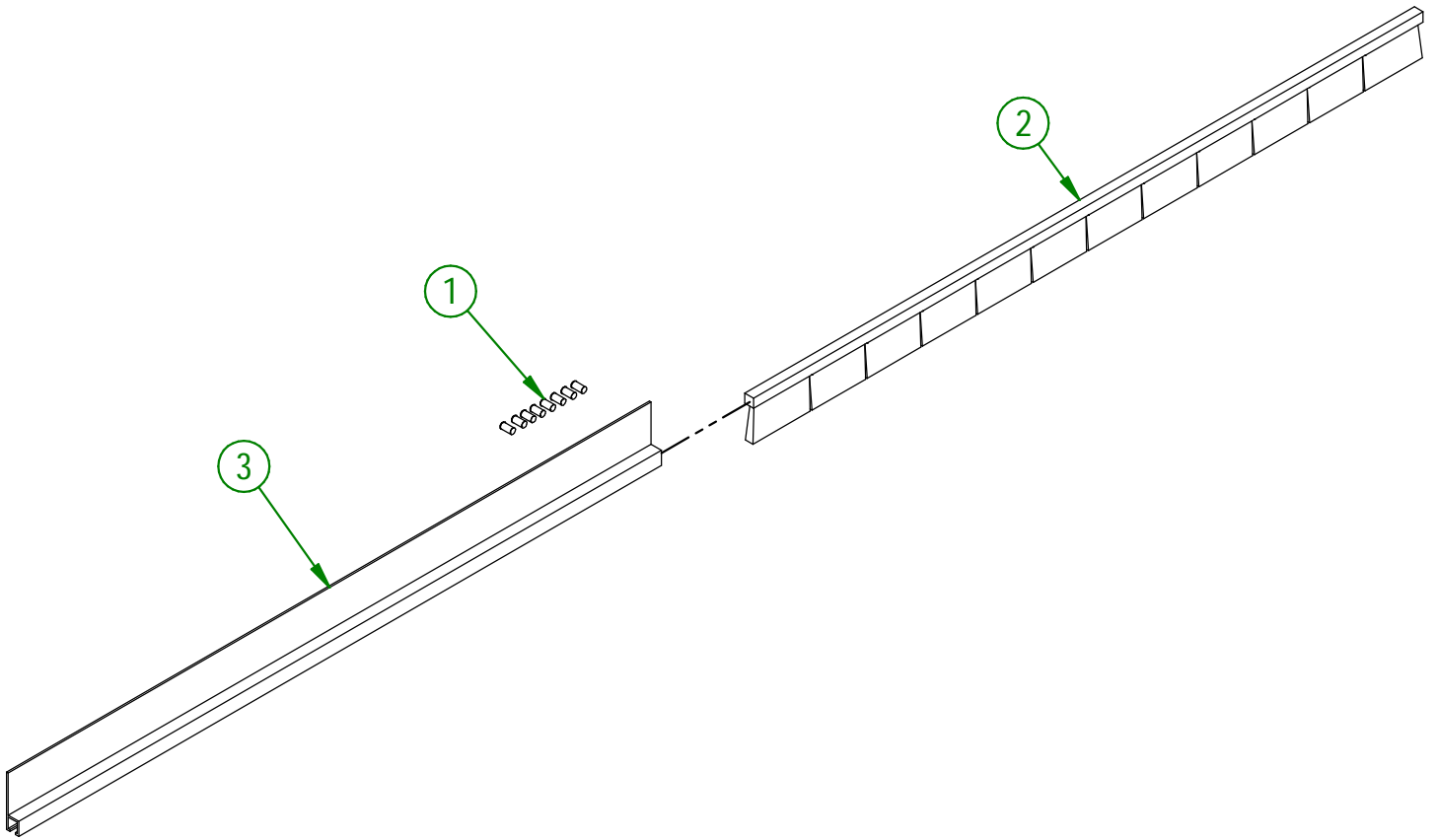
#	PART #	Qty	TITLE
1	75-21-0020	1	PLASTIC WHEEL INTERNAL BUSHING
2	75-42-0100	1	PLASTIC WHEEL INTERNAL BUSHING
3	75-55-0050	1	U.H.M.W. BLACK WHEEL
4	NCI4-70-0027	1	ROLLER BEARING
5	NCI4-75-0112	2	NEEDLE BEARING RC-121610



<b>AGRIMETAL</b>	
FRONT U.H.M.W. BLACK WHEEL	
CREATION : 16/04/20	ASSEMBLY : <b>75-55-0060</b>
REVISION : 23/02/26	AUTHOR : J. Houle

75-57-0025

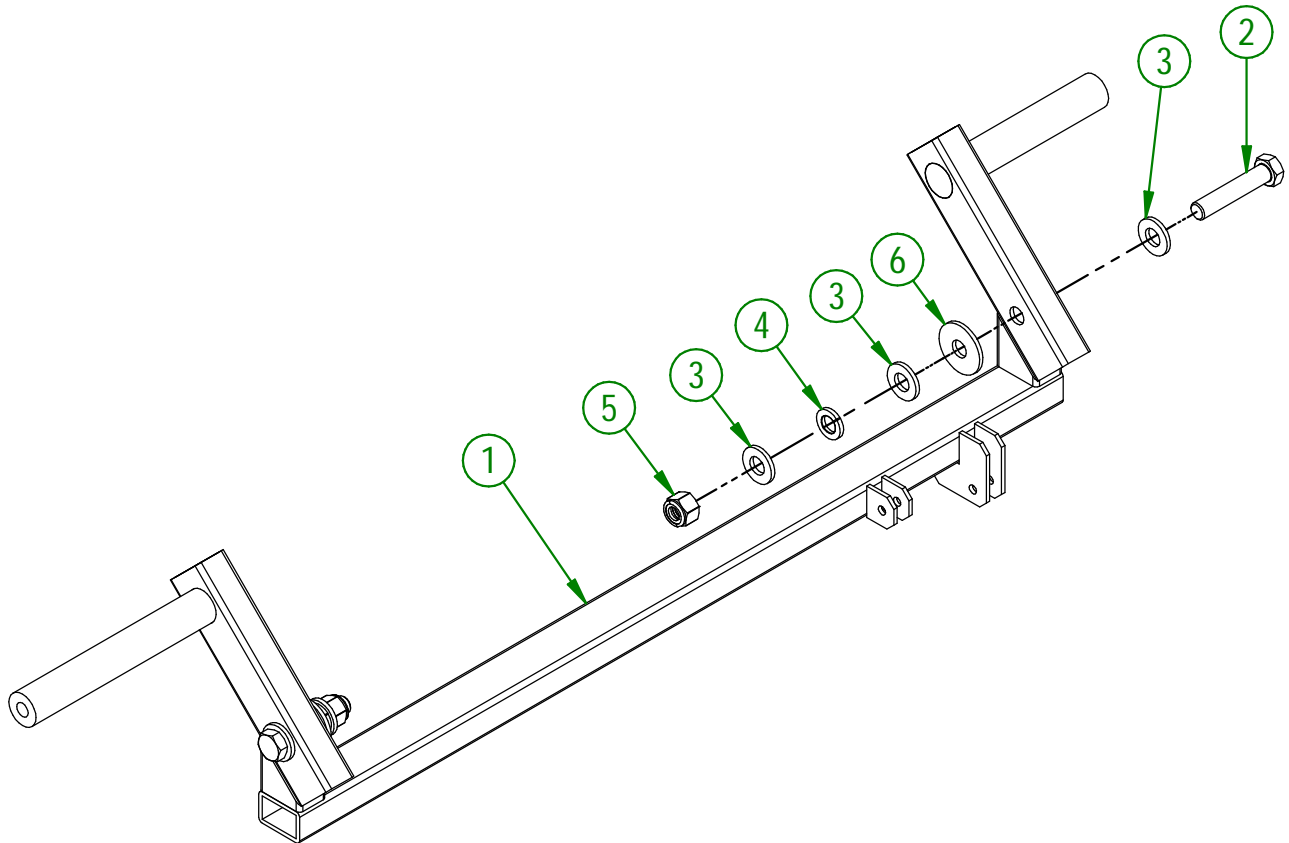
#	PART #	Qty	TITLE
1	NC01-78-0016	8	ALUMINIUM BLIND POP RIVET STEEL MANDREL 0.187 X 0.690
2	NC13-80-0236	1	BLACK NYLON BRUSH .030 X 1 1/2" X 25"
3	NC13-80-0238	1	PROFILE h-TYPE FOR BRUSH #7 X 24" LG.



<b>AGRIMETAL</b>	
BRUSH 1 1/2" GROUP (FRONT)	
CREATION : 01/03/19	ASSEMBLY : <b>75-57-0025</b>
REVISION : 20/02/26	AUTHOR : F.HÉLIE

75-57-0030

#	# DE PIÈCE	QTÉ	TITRE
1	75-50-0025	1	CHASSIS DE ROUE AJUSTABLE
2	NC01-25-0253	2	BOULON HEX. GR5 NC ZINC 1/2-13 X 2 1/2" LG
3	NC02-25-0011	6	RONDELLE ACIER SAE ZINC 17/32 ID
4	NC02-32-0014	2	RONDELLE RESSORT ZINC 1/2"
5	NC01-96-0014	2	ÉCROU HEX. BLOC. NYLON NC ZINC 1/2-13
6	NC02-22-0012	2	RONDELLE ACIER ORD. ZINC 1/2 BOLT = 9/16 $\varnothing$ X 1 3/8"OD

**AGRIMETAL**

REGROUP.CHASSIS DE ROUE AJUSTABLE

CREATION : 15/01/19  
 REVISION : 20/02/26

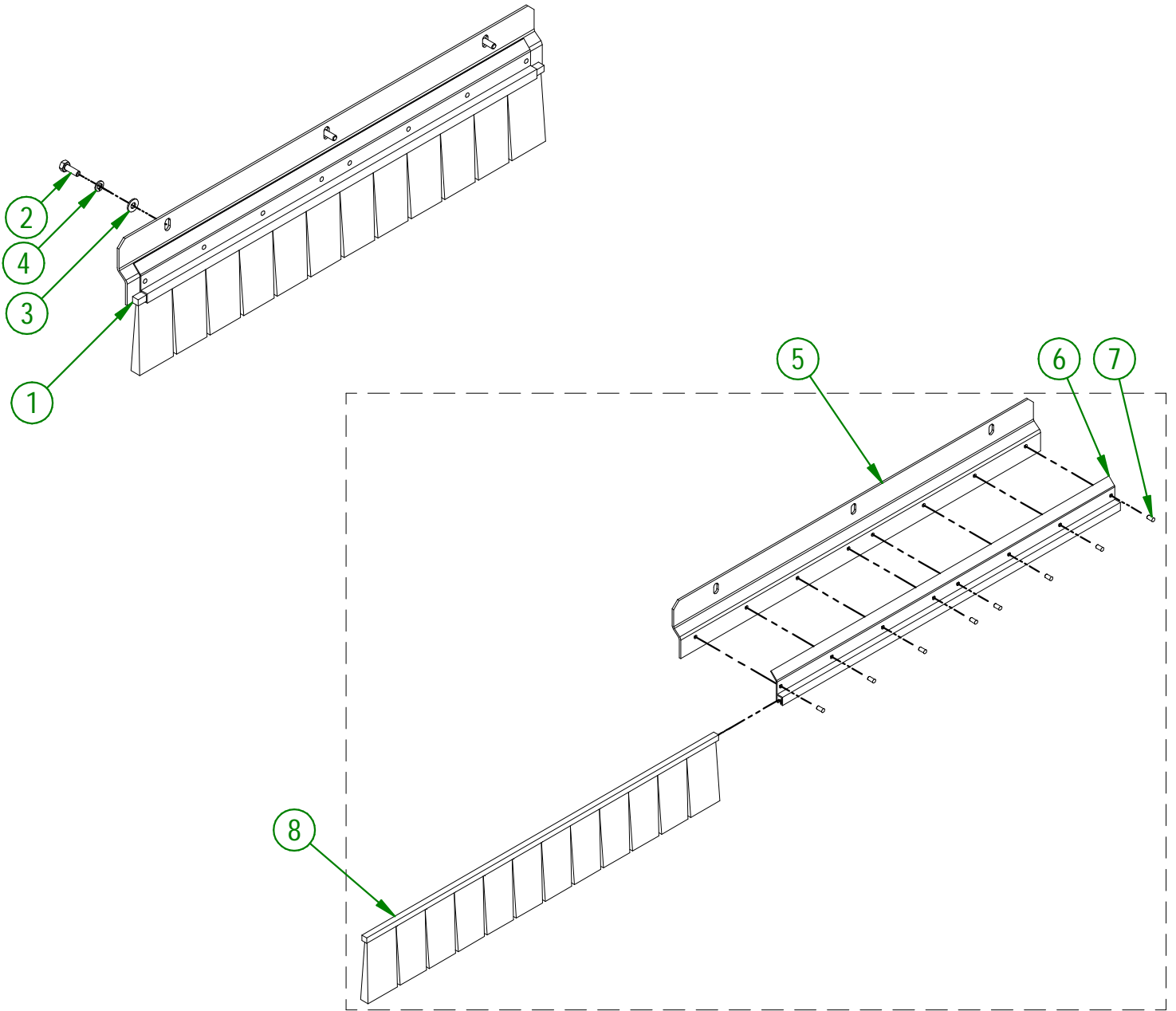
ASSEMBLY : **75-57-0030**  
 AUTHOR : F.HÉLIE

75-57-0050

#	PART #	Qty	TITLE
1	75-55-0045	1	BRUSH 4" AND SUPPORT (REAR) ASSEMBLY
2	NC01-25-0004	3	HEX. BOLT GR5 ZINC 1/4-20 X 3/4"
3	NC02-25-0007	3	WASHER ZINC 0.281 = 9/32
4	NC02-32-0010	3	LOCK WASHER ZINC 1/4"

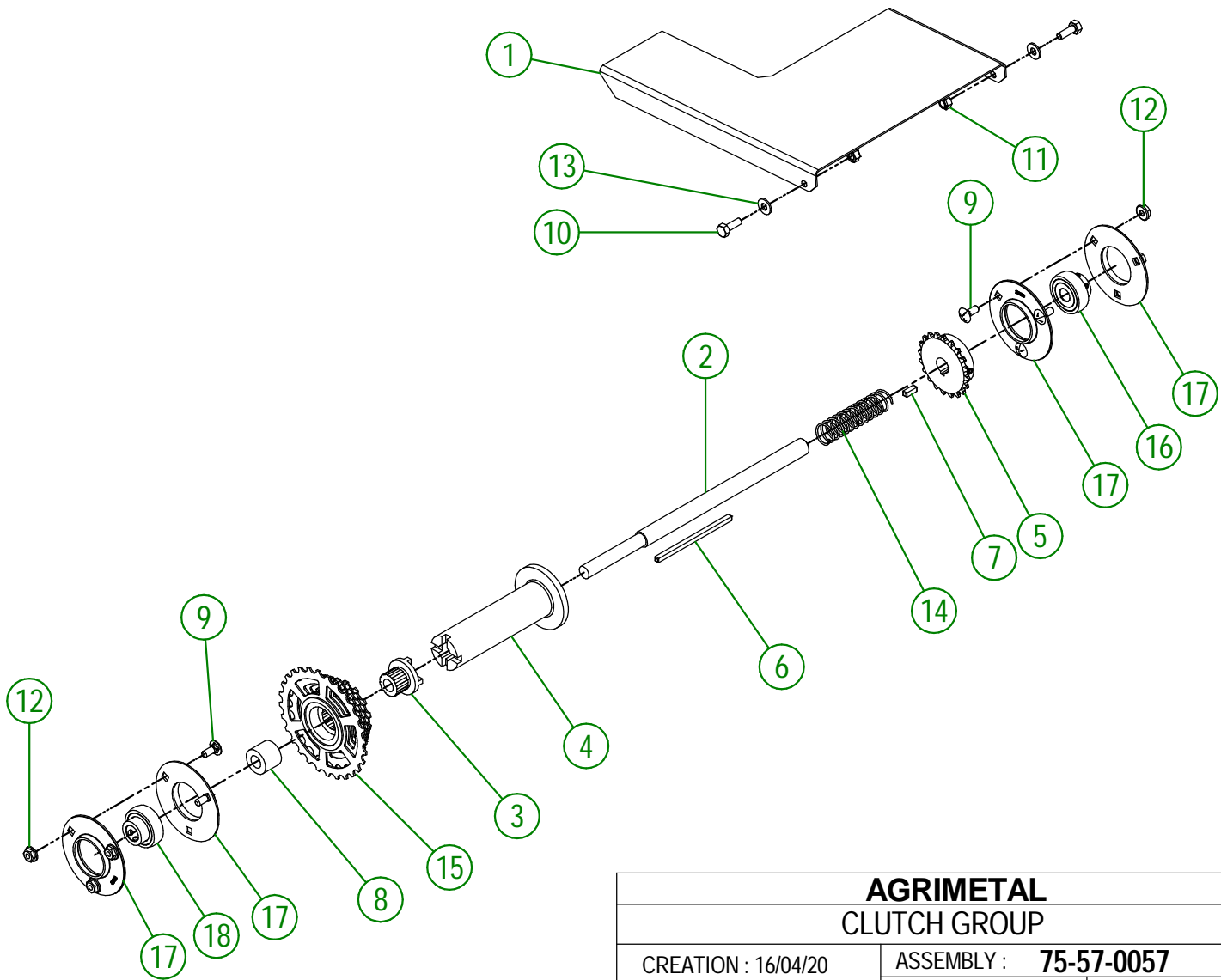
75-55-0045

#	PART #	Qty	TITLE
5	75-01-7600	1	REAR BRUSH SUPPORT
6	75-41-7250	1	PROFILE h-TYPE FOR BRUSH #7 X 24" LG
7	NC01-78-0016	8	ALUMINIUM BLIND POP RIVET STEEL MANDREL 0.187 X 0.690
8	NC13-80-0237	1	BLACK NYLON BRUSH .030 X 1 1/2" HAUT X 25"



<b>AGRIMETAL</b>	
<b>BRUSH 4" AND SUPPORT GROUP (REAR)</b>	
CREATION : 01/03/19	ASSEMBLY : <b>75-57-0050</b>
REVISION : 20/02/26	AUTHOR : F.HÉLIE

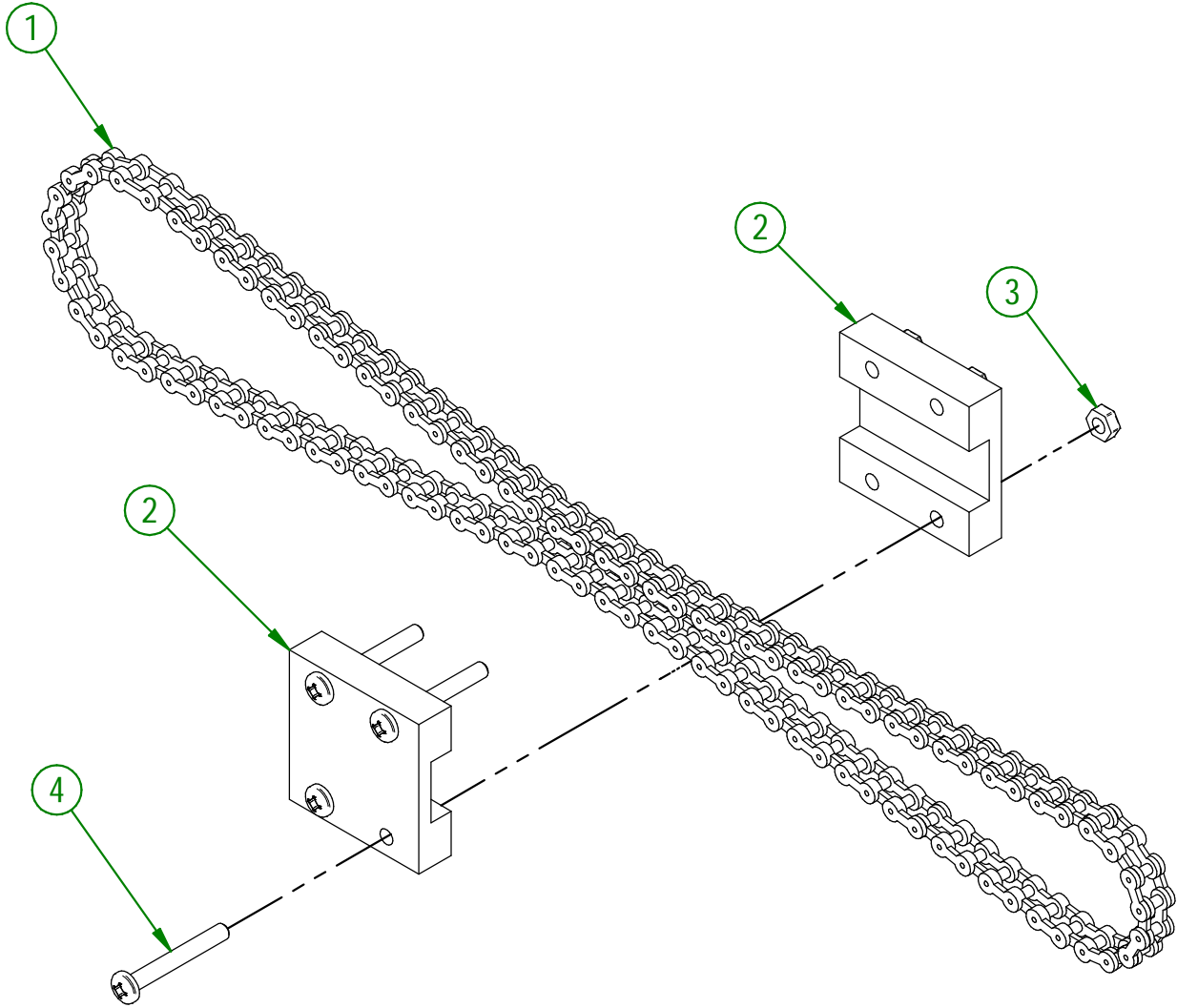
#	PART #	Qty	TITLE
1	75-01-3045	1	CLUTCH COVER
2	75-13-0805	1	CLUTCH SHAFT
3	75-13-1800	1	CLUTCH OF CALIBRATED ROLLER
4	75-21-0075	1	CLUTCH
5	75-36-0102	1	CLUTCH SPROCKET
6	75-41-0900	1	KEY 3/16" X 3/16" X 4"
7	75-41-0905	1	KEY 3/16" X 3/16" X 9/16"
8	75-42-0160	1	MULTIPLE SPROCKET BUSHING
9	NC01-07-0002	6	CARR. BOLT GR5 ZINC 1/4-20 X 5/8"
10	NC01-25-0004	2	HEX. BOLT GR5 ZINC 1/4-20 X 3/4"
11	NC01-96-0009	2	NYLON-INSERT LOCKNUT ZINC 1/4-20
12	NC02-14-0017	6	FLANGED NUT GR. B 1/4-20
13	NC02-25-0007	2	WASHER ZINC 0.281 = 9/32
14	NC13-85-0037	1	COMPRESSION SPRING
15	NC14-55-0243	1	MULTIPLE SPROCKET
16	NC14-75-0108	1	BEARING SB 201-8 Ø 1/2"
17	NC14-75-0136	4	PRESSED STEEL FLANGED HOUSING O.D. 3 3/16" PF203
18	NC14-75-0155	1	BEARING SB 202-10 Ø 5/8"



<b>AGRIMETAL</b>	
<b>CLUTCH GROUP</b>	
CREATION : 16/04/20	ASSEMBLY : <b>75-57-0057</b>
REVISION : 20/02/26	AUTHOR : J. Houle

75-57-0080

#	PART #	Qty	TITLE
1	75-37-1000	1	CHAIN #35 X 36"
2	75-42-0170	2	CHAIN TENSIONER #35
3	NC01-96-0006	4	NYLON NUT ZINC 3/16
4	NC02-40-0085	4	MACHINE SCREW T.R. 10-24 X 1 1/2"



**AGRIMETAL**

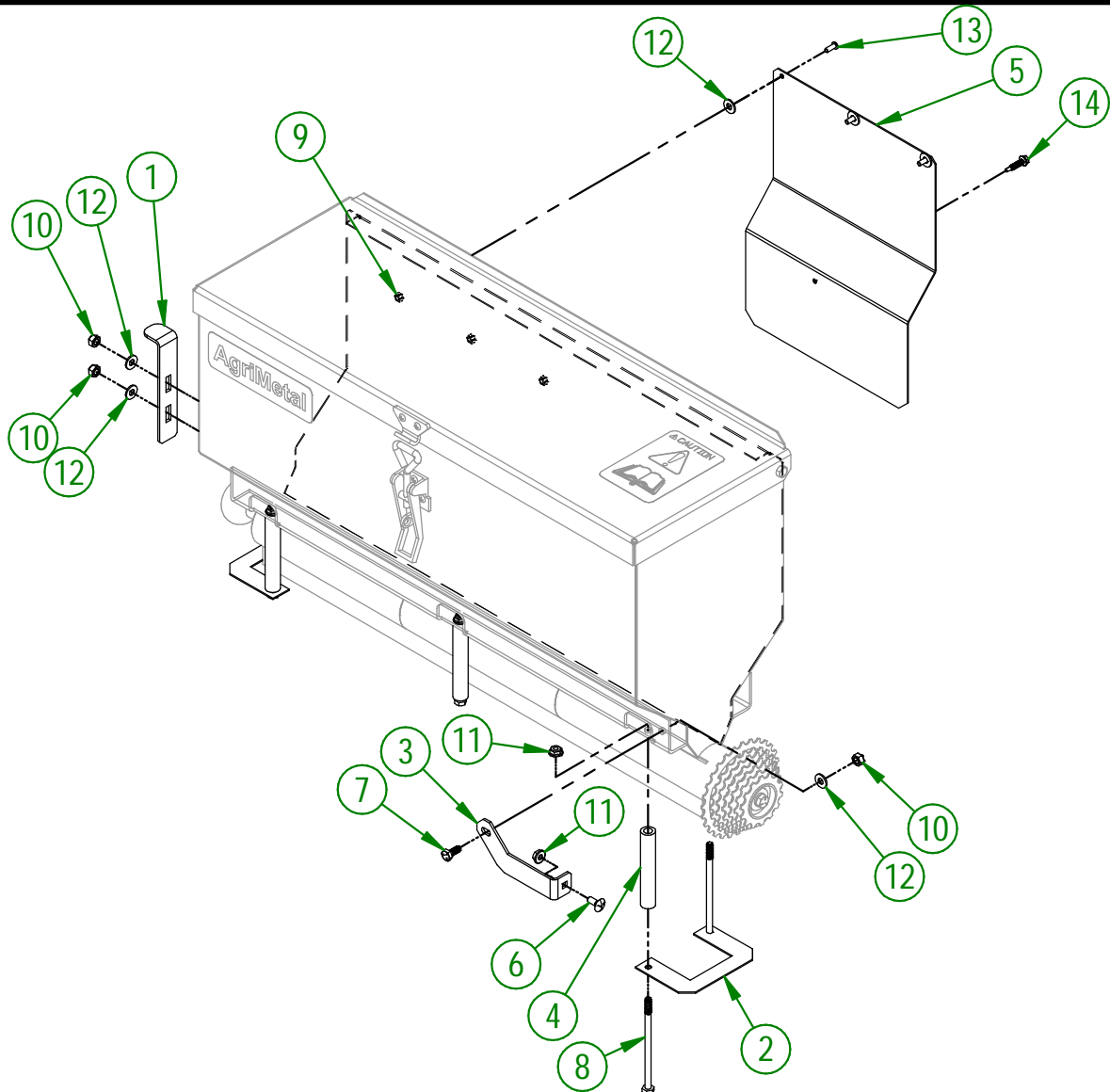
**TENSIONER & ROTOR CLUTCH CHAIN GROUP**

CREATION : 01/03/19  
REVISION : 23/02/26

ASSEMBLY : **75-57-0080**  
AUTHOR : F.HÉLIE

75-57-0090

#	PART #	Qty	TITLE
1	75-01-1560	1	CALIBRATED ROLLER LOCK
2	75-01-3110	2	DISTRIBUTOR SHAFT SHIM
3	75-01-7555	1	CLUTCH BOX BRACE
4	75-09-0015	6	ASSEMBLY GUIDE
5	75-22-2600	1	HEAT SHIELD
6	NC01-07-0002	3	CARR. BOLT GR5 ZINC 1/4-20 X 5/8"
7	NC01-25-0003	1	ZINC PLATED GR 5 HEX BOLT 1/4-20 X 5/8"
8	NC01-25-0020	6	HEX BOLT GR5 NC ZINC 1/4-20 X 4 1/2" LG.
9	NC01-96-0006	3	NYLON NUT ZINC 3/16
10	NC01-96-0009	3	NYLON-INSERT LOCKNUT ZINC 1/4-20
11	NC02-14-0017	7	FLANGED NUT GR. B 1/4-20
12	NC02-25-0007	6	WASHER ZINC 0.281 = 9/32
13	NC02-40-0080	3	MACHINE SCREWS SQUARE SOCKET #10-24 X 1/2" LG
14	NC02-41-0012	1	T METAL HEX. TAPPING SCREW 12 X 1"

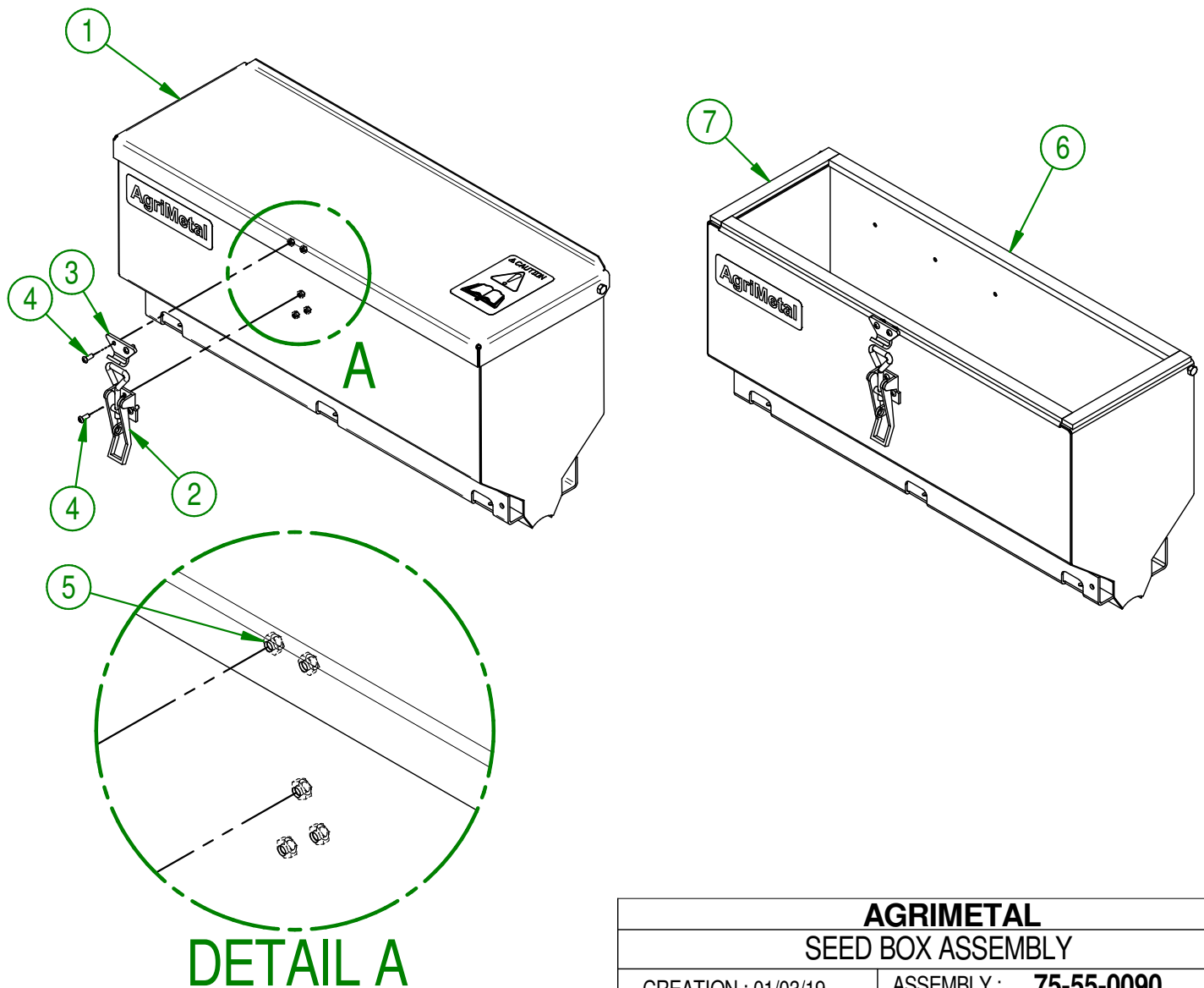


**AGRIMETAL**  
**SEED BOX GROUP**

CREATION : 01/03/19  
REVISION : 20/02/26

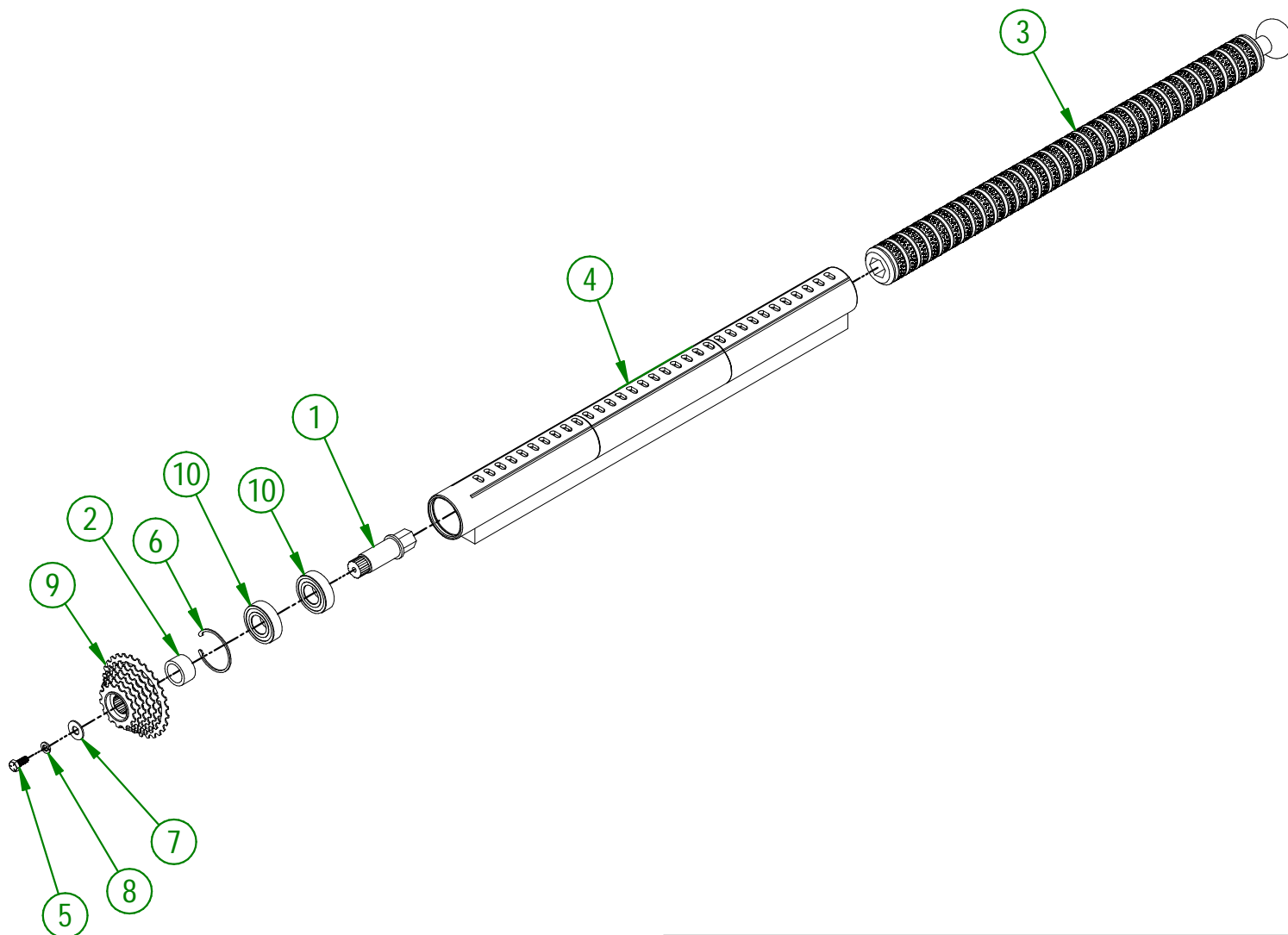
ASSEMBLY : **75-57-0090**  
AUTHOR : F.HÉLIE

#	PART #	Qty	TITLE
1	75-57-0095	1	SEED BOX GROUP
2	NC01-63-0036	1	DRAW LATCH 6 1/2"
3	NC01-63-0037	1	DRAW LATCH STRIKER
4	NC02-40-0080	5	MACHINE SCREWS SQUARE SOCKET #10-24 X 1/2" LG
5	NC01-96-0006	5	NYLON NUT ZINC 10-24
6	75-42-0205	2	BLACK ADHESIVE-BACK STRIP
7	75-42-0200	2	BLACK ADHESIVE-BACK STRIP



<b>AGRIMETAL</b>	
SEED BOX ASSEMBLY	
CREATION : 01/03/19	ASSEMBLY : <b>75-55-0090</b>
REVISION : 01/03/19	AUTHOR : F.HÉLIE

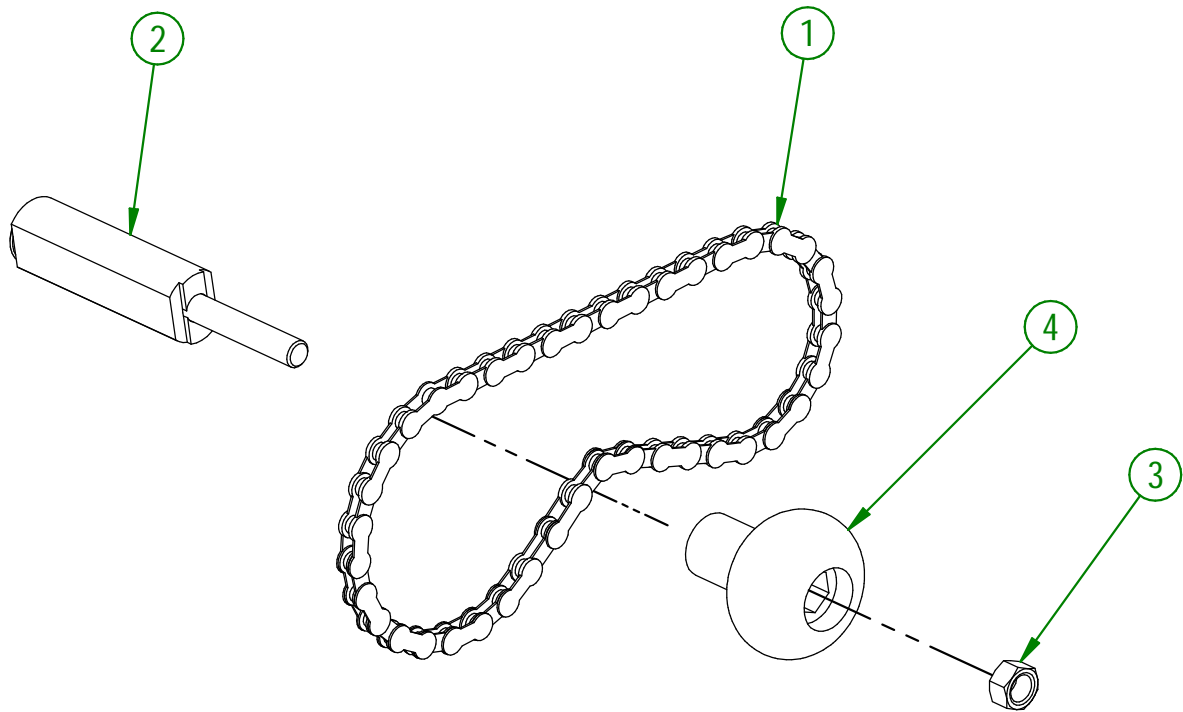
#	PART #	Qty	TITLE
1	75-13-1600	1	CALIBRATED ROLLER DRIVE SHAFT
2	75-42-0165	1	CALIBRATED ROLLER MULTIPLE SPROCKET BUSHING
3	75-42-0605	1	SEED CALIBRATED ROLLER "BEND"
4	75-55-0100	1	DISTRIBUTOR TUBE ASSEMBLY
5	NC01-25-0058	1	HEX BOLT GR5 ZINC PLATED 5/16-18 X 3/4"
6	NC01-64-0159	1	INTERNAL RETAINING RING 2 1/16" HOLE
7	NC02-22-0010	1	WASHER 13/32" ID
8	NC02-32-0011	1	LOCK WASHER ZINC 5/16"
9	NC14-55-0243	1	MULTIPLE SPROCKET
10	NC14-75-0070	2	6205-2RS BEARING



<b>AGRIMETAL</b>	
<b>SEED DISTRIBUTOR TUBE ASSEMBLY</b>	
CREATION : 01/03/19	ASSEMBLY : <b>75-55-0040</b>
REVISION : 23/02/26	AUTHOR : F.HÉLIE

75-57-0120

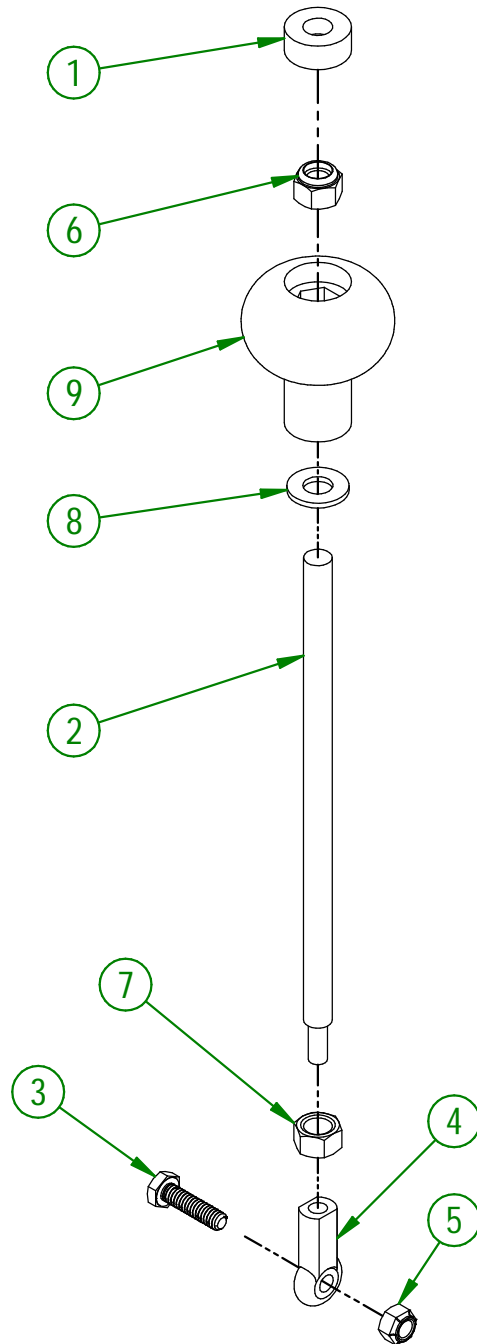
#	PART #	Qty	TITLE
1	75-37-1005	1	BICYCLE CHAIN 22 1/4" ASSEMBLY
2	75-57-0125	1	CHAIN TENSIONER
3	NC02-07-0018	1	HEX. NUT ZINC 3/8-16
4	NC17-46-0018	1	HANDLE KNOB



<b>AGRIMETAL</b>	
TENSIONER & MULTIPLE SPROCKET CLUTCH CHAIN GROUP	
CREATION : 01/03/19	ASSEMBLY : <b>75-57-0120</b>
REVISION : 20/02/26	AUTHOR : F.HÉLIE

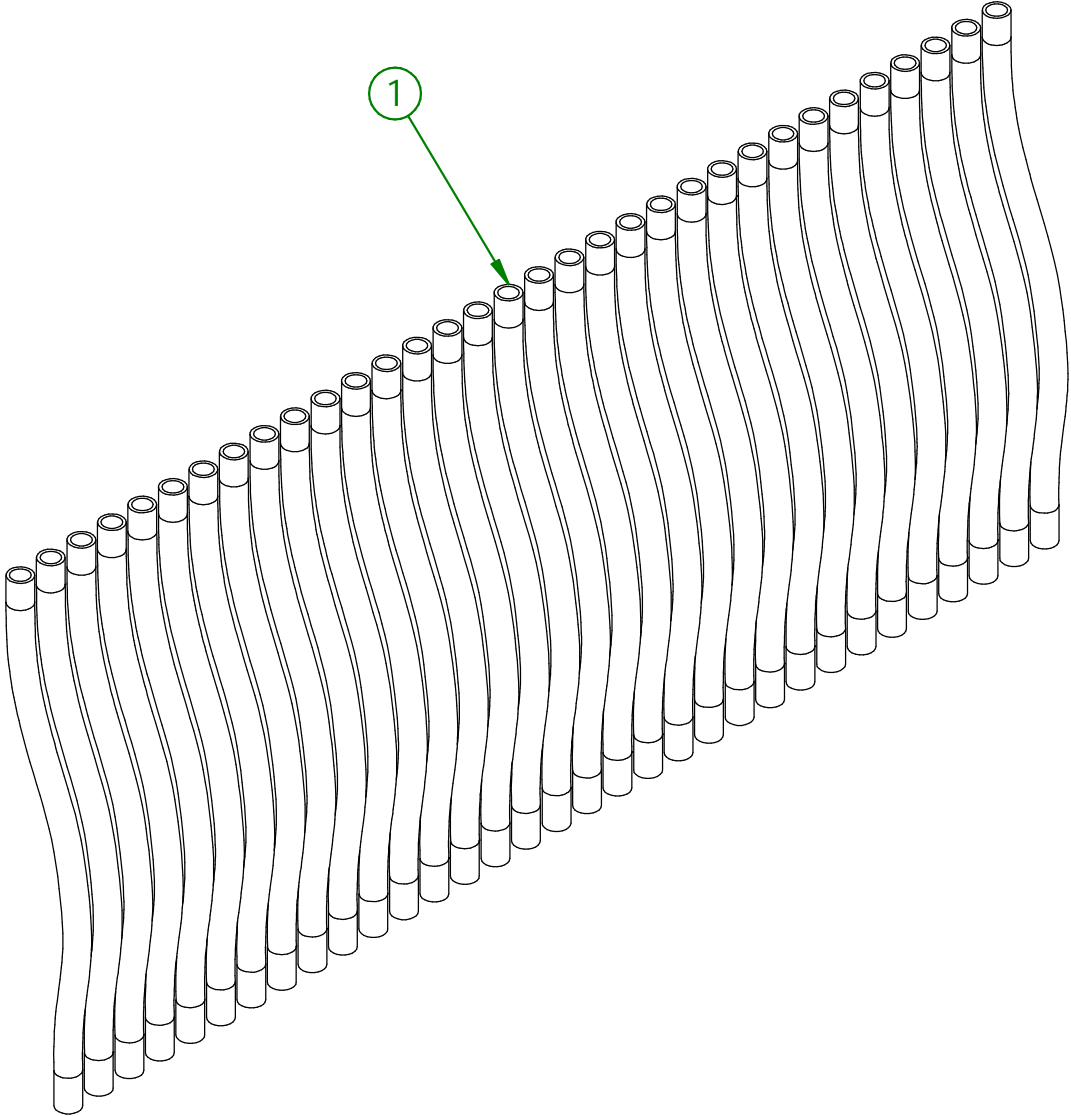
75-57-0140

#	PART #	Qty	TITLE
1	75-21-0005	1	HANDLE BLACK KNOB INSERT
2	75-31-0100	1	ADJUSTABLE SCREW
3	NC01-25-0006	1	HEX. BOLT GR5 1/4-20 X 1"
4	NC01-67-0102	1	INTERNALLY THREADED BALL JOINT ROD END 1/4-28
5	NC01-96-0009	1	NYLON-INSERT LOCKNUT ZINC 1/4-20
6	NC01-96-0011	1	NYLON NUT 3/8-16
7	NC02-07-0018	1	HEX. NUT ZINC 3/8-16
8	NC02-25-0009	1	FLAT WASHER 14 GA X 13/16"OD X 25/64" ID
9	NC17-46-0018	1	HANDLE KNOB



<b>AGRIMETAL</b>	
<b>REAR WHEEL ADJUSTABLE SCREW GROUP</b>	
CREATION : 04/03/19	ASSEMBLY : <b>75-57-0140</b>
REVISION : 20/02/26	AUTHOR : F.HÉLIE

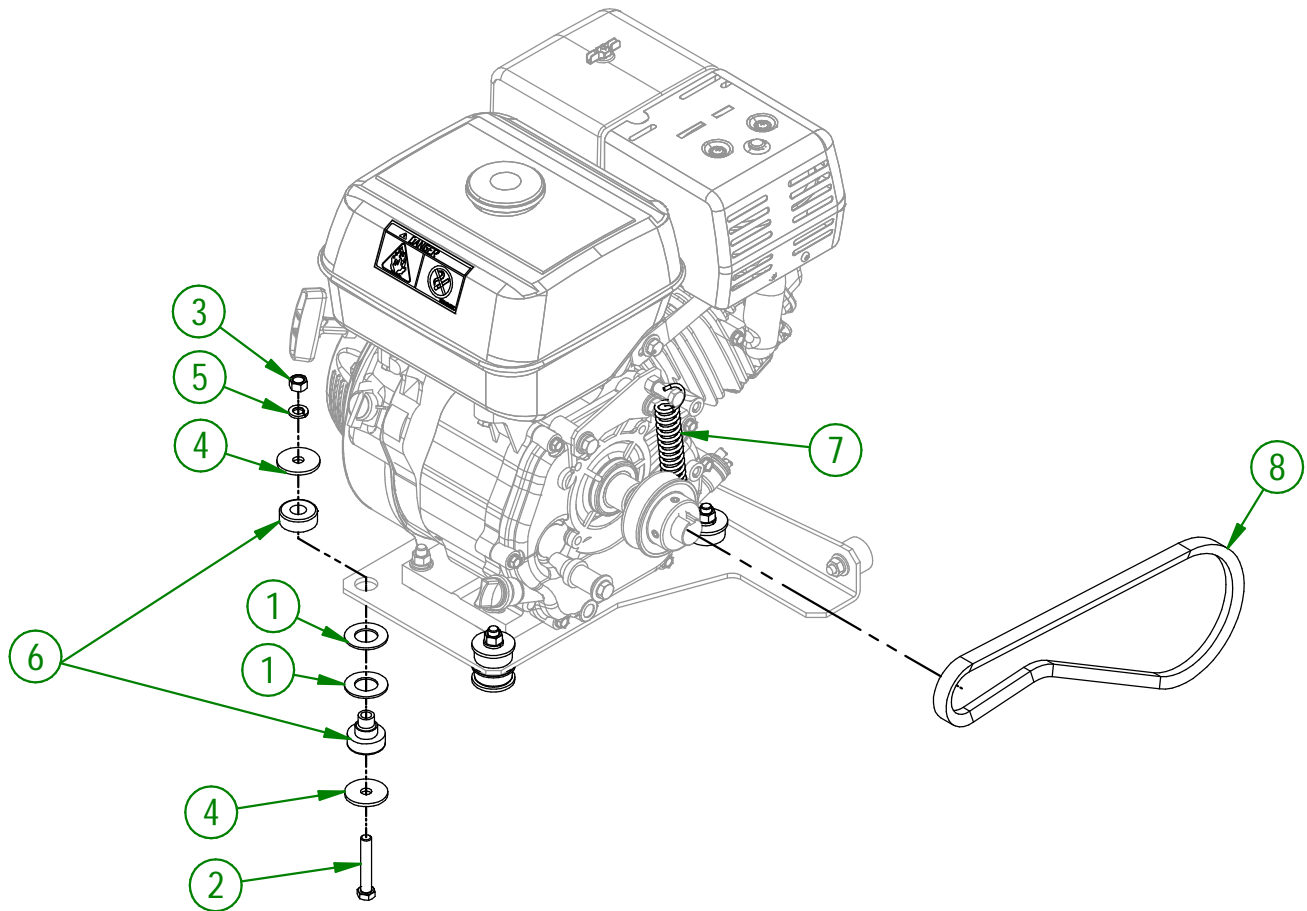
#	PART #	Qty	TITLE
1	75-46-0525	33	SEED URETHANE TUBE



<b>AGRIMETAL</b>	
SEED DISTRIBUTOR TUBE GROUP	
CREATION : 04/03/19	ASSEMBLY : <b>75-57-0145</b>
REVISION : 23/02/26	AUTHOR : F.HÉLIE

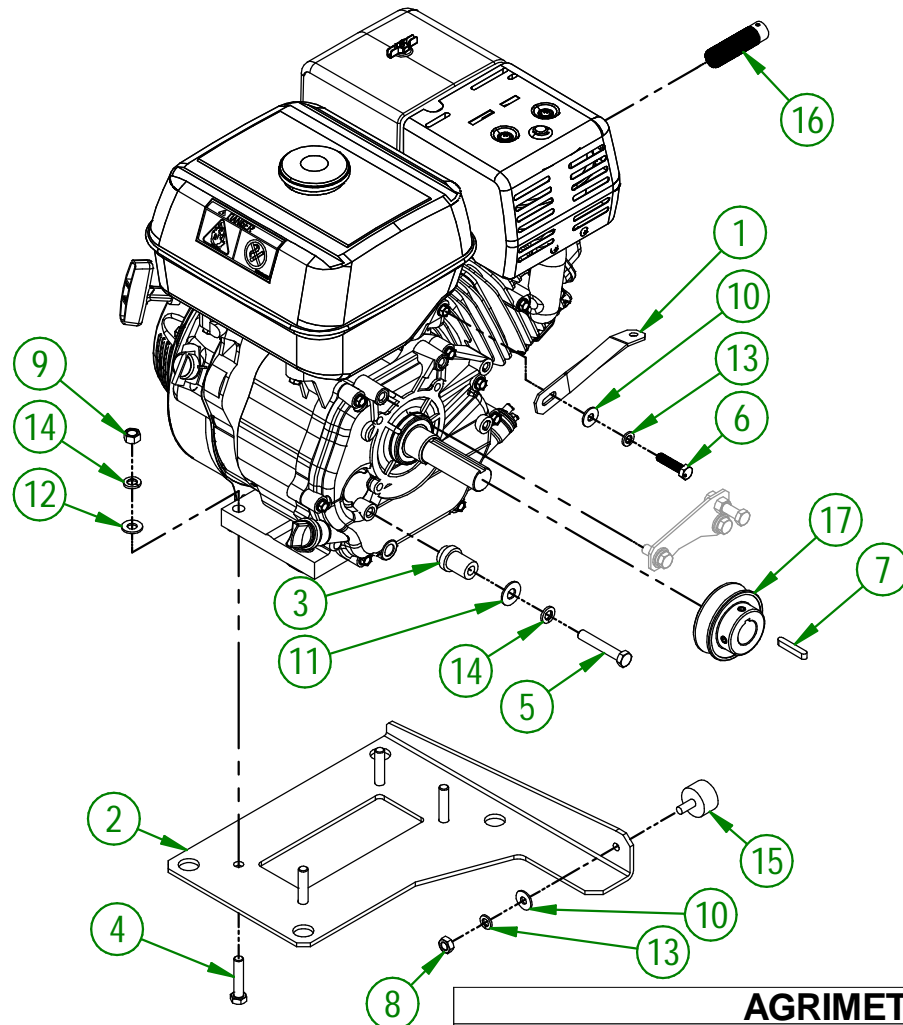
75-57-0150

#	PART #	Qty	TITLE
1	26-03-4800	8	WASHER
2	NC01-25-0119	4	HEX. BOLT GR5 NC ZINC 3/8-16 X 2"
3	NC02-07-0018	4	HEX. NUT ZINC 3/8-16
4	NC02-26-0504	8	WASHER
5	NC02-32-0012	4	LOCK WASHER ZINC 3/8"
6	NCI3-15-0059	4	YELLOW RUBBER BASE MOUNT
7	NCI3-85-0008	1	GALVANISED SPRING
8	NCI4-25-1071	1	V BELT 21/32" (BX-32)



<b>AGRIMETAL</b>	
<b>HONDA 9 H.P.(MANUAL) MOTOR GROUP</b>	
CREATION : 04/03/19	ASSEMBLY : <b>75-57-0150</b>
REVISION : 20/02/26	AUTHOR : F.HÉLIE

#	PART #	Qty	TITLE
1	01-03-5405	1	MUFFLER SUPPORT
2	75-04-0025	1	MOTOR BASE (9 HP)
3	75-13-1425	1	MOTOR (9 HP) TENSIONER SHAFT
4	NC01-25-0117	4	HEX. BOLT GR5 ZINC 3/8-16 X 1 3/4" LG
5	NC01-25-0119	1	HEX. BOLT GR5 NC ZINC 3/8-16 X 2"
6	NC01-45-0188	1	BOLT MET.GR2 NF ZINC 8MM X 35MM
7	NC01-65-0087	1	KEY 1/4 X 1/4 X 1 1/2"
8	NC02-07-0017	1	HEX. NUT 5/16-18
9	NC02-07-0018	4	HEX. NUT ZINC 3/8-16
10	NC02-22-0008	2	WASHER ZINC 5/16"
11	NC02-22-0010	1	WASHER 13/32" ID
12	NC02-25-0009	4	FLAT WASHER 14 GA X 13/16"OD X 25/64" ID
13	NC02-32-0011	2	LOCK WASHER ZINC 5/16"
14	NC02-32-0012	5	LOCK WASHER ZINC 3/8"
15	NC13-15-0034	1	RUBBER ABSORBER
16	NC13-37-0519	1	ARRESTER SPARK
17	NC14-62-0212	1	MB30X1/2 PULLEY

**AGRIMETAL****HONDA (MANUAL) MOTOR 9 H.P. ASSEMBLY**

CREATION : 04/03/19

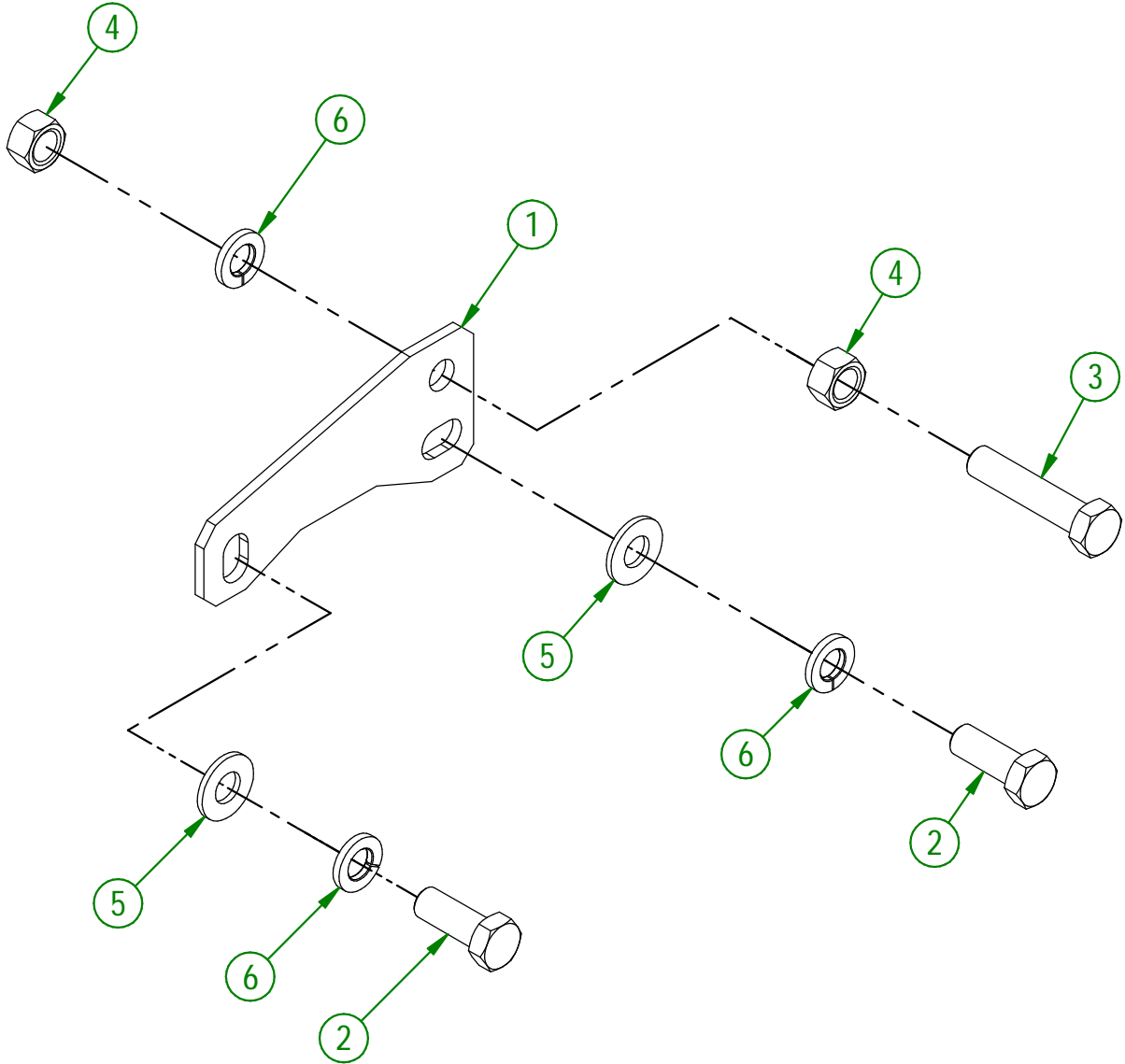
REVISION : 23/02/26

ASSEMBLY : **75-55-0025**

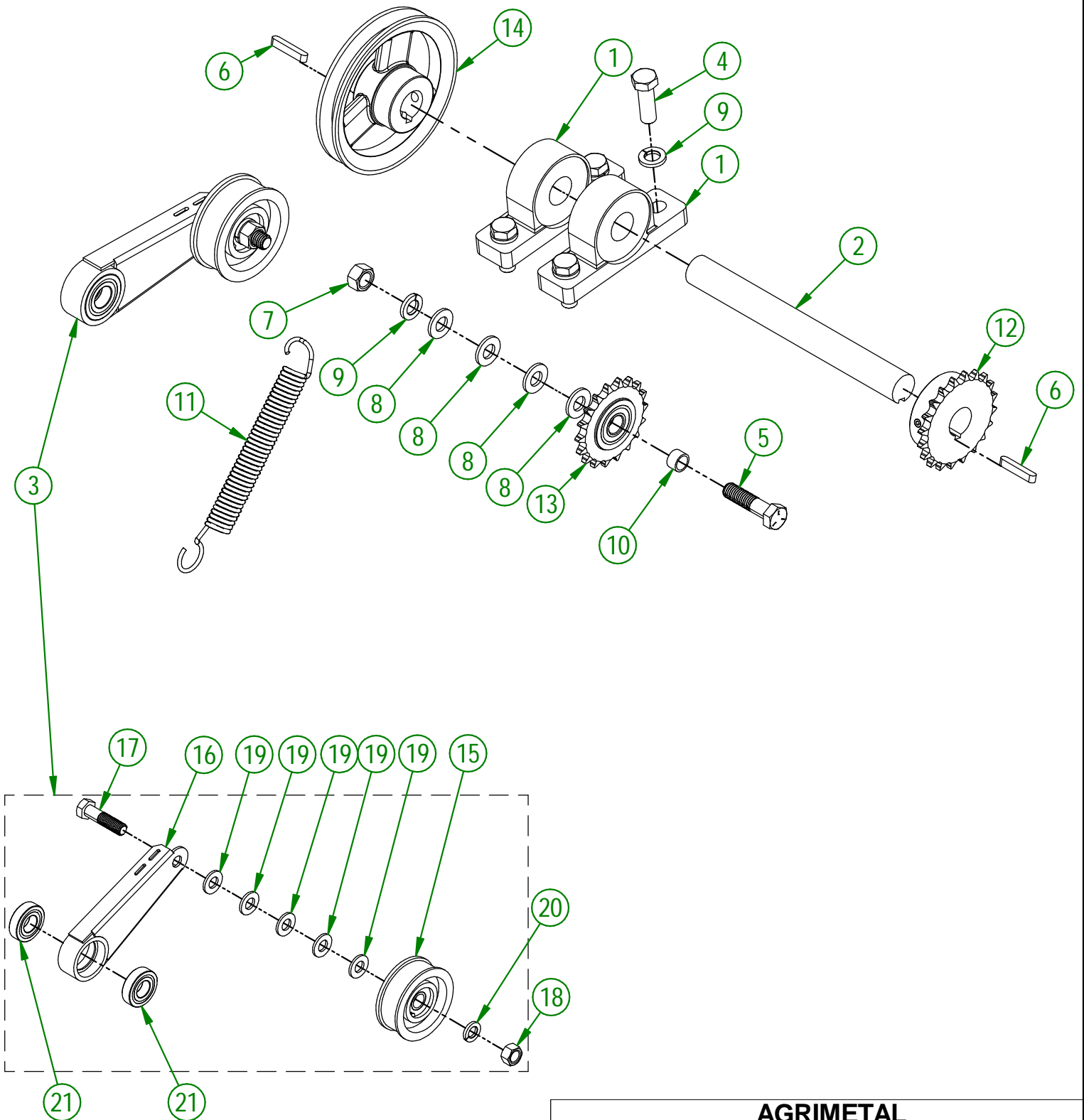
AUTHOR : F.HÉLIE

75-57-0190

#	PART #	Qty	TITLE
1	75-01-0980	1	TENSIONER SPRING SUPPORT
2	NC01-25-0114	2	HEX. BOLT GR5 ZINC 3/8-16 X 1"
3	NC01-25-0117	1	HEX. BOLT GR5 ZINC 3/8-16 X 1 3/4" LG
4	NC02-07-0018	2	HEX. NUT ZINC 3/8-16
5	NC02-25-0009	2	FLAT WASHER 14 GA X 13/16"OD X 25/64" ID
6	NC02-32-0012	3	LOCK WASHER ZINC 3/8"



<b>AGRIMETAL</b>	
<b>TENSIONER SPRING SUPPORT GROUP</b>	
CREATION : 04/03/19	ASSEMBLY : <b>75-57-0190</b>
REVISION : 23/02/26	AUTHOR : F.HÉLIE



**AGRIMETAL**  
**ROTOR DRIVE GROUP**

CREATION : 04/03/19  
 REVISION : 20/02/26

ASSEMBLY : **75-57-0155**  
 AUTHOR : F.HÉLIE

## 75-57-0155

#	PART #	Qty	TITLE
1	03-38-0000	2	PILLOW BLOCK UCP205-16 X 1" ID
2	75-13-1410	1	INTERMEDIATE SHAFT
3	75-55-0095	1	BELT TENSIONER ARM
4	NC01-25-0249	4	HEX. BOLT GR5 ZINC 1/2-13 X 1 1/2" LG
5	NC01-25-0251	1	HEX.BOLT GR5 NC ZINC 1/2-13 X 2"
6	NC01-65-0087	2	KEY 1/4 X 1/4 X 1 1/2"
7	NC02-07-0020	1	HEX. NUT ZINC 1/2-13
8	NC02-25-0011	4	WASHER SAE ZINC 17/32 ID
9	NC02-32-0014	5	LOCK WASHER ZINC 1/2"
10	NC13-80-0061	1	PAD STEEL POWDER 1/2" X 5/8" X 3/8"
11	NC13-85-0008	1	GALVANISED SPRING
12	NC14-55-0254	1	SPROCKET 40B20 X Ø 1" K.W. 1/4" 2SS
13	NC14-55-0305	1	SPROCKET 40C18H X 6202 X Ø 5/8" SPEC.
14	NC14-62-0213	1	PULLEY (MB55 X Ø 1" KW 1/4" 2 SS)

## 75-55-0095

#	PART #	Qty	TITLE
15	01-39-0600	1	IDLER PULLEY PI-300 ASSY
16	75-50-0065	1	BELT TENSIONER
17	NC01-25-0251	1	HEX.BOLT GR5 NC ZINC 1/2-13 X 2"
18	NC02-07-0020	1	HEX. NUT ZINC 1/2-13
19	NC02-25-0011	5	WASHER SAE ZINC 17/32 ID
20	NC02-32-0014	1	LOCK WASHER ZINC 1/2"
21	NC14-75-0110	2	BALL BEARING R12 2RS

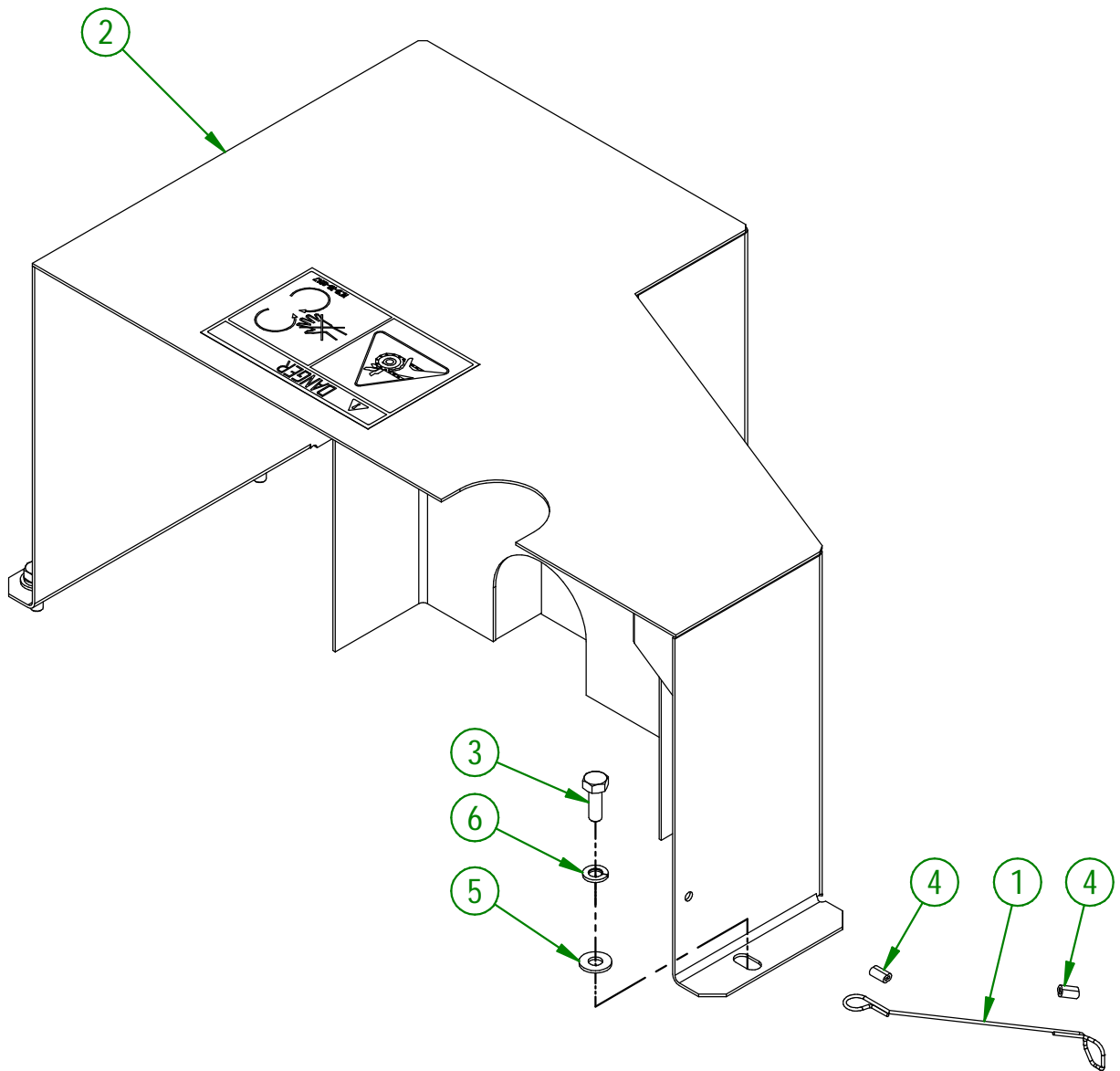
**AGRIMETAL**  
**ROTOR DRIVE GROUP**

CREATION : 04/03/19  
REVISION : 20/02/26

ASSEMBLY : **75-57-0155**  
AUTHOR : F.HÉLIE

75-57-0165

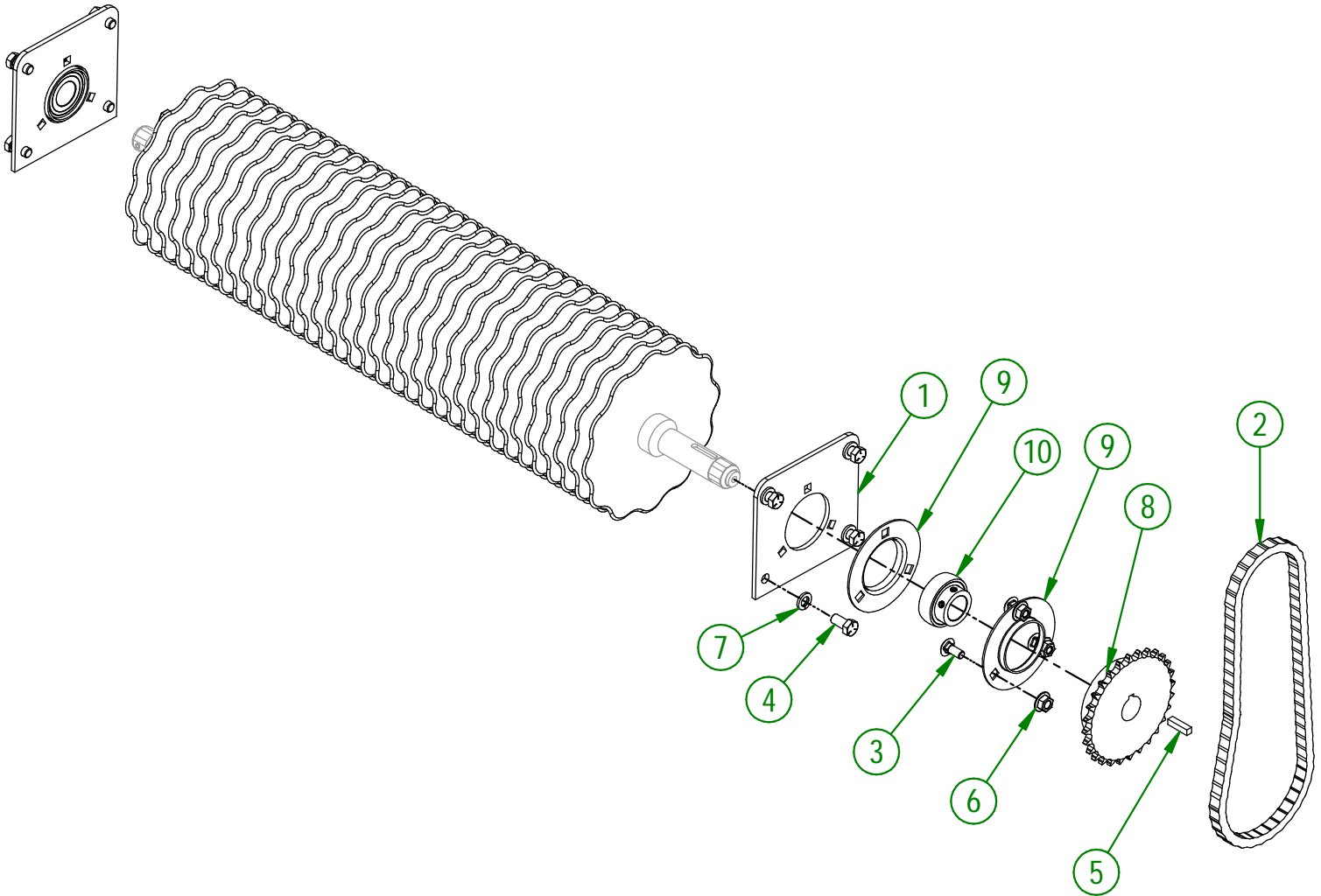
#	PART #	Qty	TITLE
1	75-41-0135	1	BELT GUARD WIRE Ø1/16 X 18" LG.
2	75-57-0170	1	BELT GUARD GROUP (STICKER INCLUDED)
3	NC01-25-0004	3	HEX. BOLT GR5 ZINC 1/4-20 X 3/4"
4	NC01-64-0005	2	OVAL SLEEVE (ALUMINUM)
5	NC02-25-0007	3	WASHER ZINC 0.281 = 9/32
6	NC02-32-0010	3	LOCK WASHER ZINC 1/4"



<b>AGRIMETAL</b>	
<b>BELT GUARD GROUP</b>	
CREATION : 04/03/19	ASSEMBLY : <b>75-57-0165</b>
REVISION : 20/02/26	AUTHOR : F.HÉLIE

75-57-0176

#	PART #	Qty	TITLE
1	75-04-0035	2	ROTOR BEARING PLATE
2	75-37-1010	1	CHAIN #40 X 30" + 1 LINK
3	NC01-07-0056	6	CARR. BOLT GR5 NC ZINC 5/16-18 X 3/4"
4	NC01-25-0112	8	HEX BOLT ZINC 3/8-16 X 3/4"
5	NC01-65-0095	1	SQUARE KEY 1/4" X 1"
6	NC02-14-0006	6	HEX. NUT SPECIAL FLANGET NC 5/16-18 B GRADE
7	NC02-32-0012	8	LOCK WASHER ZINC 3/8"
8	NC14-55-0250	1	SPROCKET 40B28H X 1" (K.W. 1/4" 2SS)
9	NC14-75-0009	4	PRESSED STEEL FLANGED HOUSING F5 O.D. 3 3/4"
10	NC14-75-0016	2	SEAL BALL BEARING SB 205-16



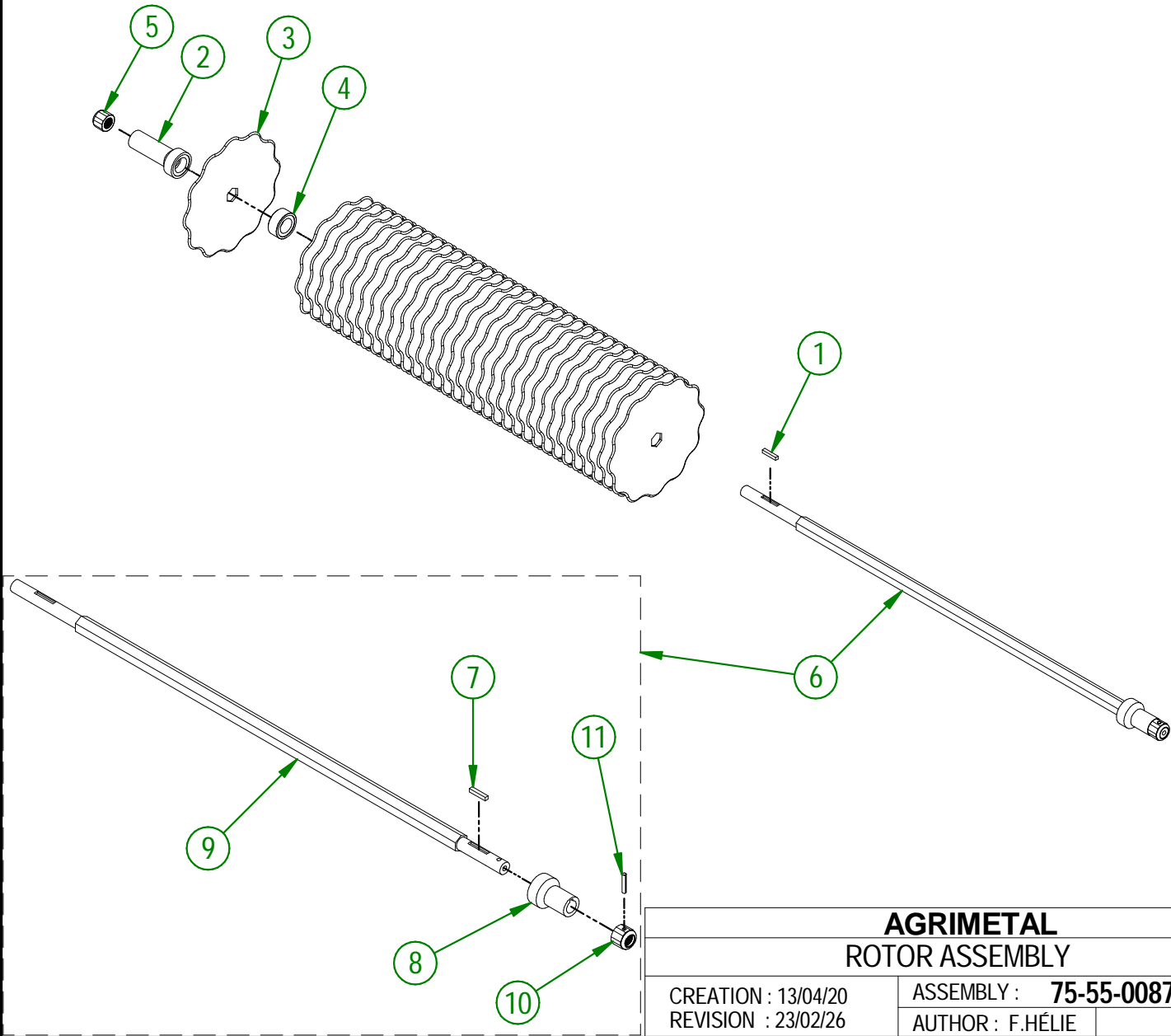
<b>AGRIMETAL</b>	
<b>ROTOR GROUP</b>	
CREATION : 13/04/20	ASSEMBLY : <b>75-57-0176</b>
REVISION : 20/02/26	AUTHOR : F.HÉLIE

75-55-0087

#	PART #	Qty	TITLE
1	47-41-0900	1	SQUARE KEY
2	75-13-2000	1	ROTOR DRIVE TIP
3	75-20-0935	33	ROTOR BLADE OVERSEEDER-B
4	75-21-0057	32	BLADE BUSHING 0.110" X 3/4" C/C
5	75-32-9950	1	ROTOR NYLON INSERT LOCKNUT
6	75-55-0081	1	ROTOR SHAFT

75-55-0081

#	PART #	Qty	TITLE
7	47-41-0900	1	SQUARE KEY
8	75-13-2005	1	ROTOR LOCK TIP
9	75-25-2400	1	ROTOR SHAFT
10	75-32-9950	1	ROTOR NYLON INSERT LOCKNUT
11	NC01-69-0419	1	SPRING TIGHTENER PIN ZINC 3/16 XI"



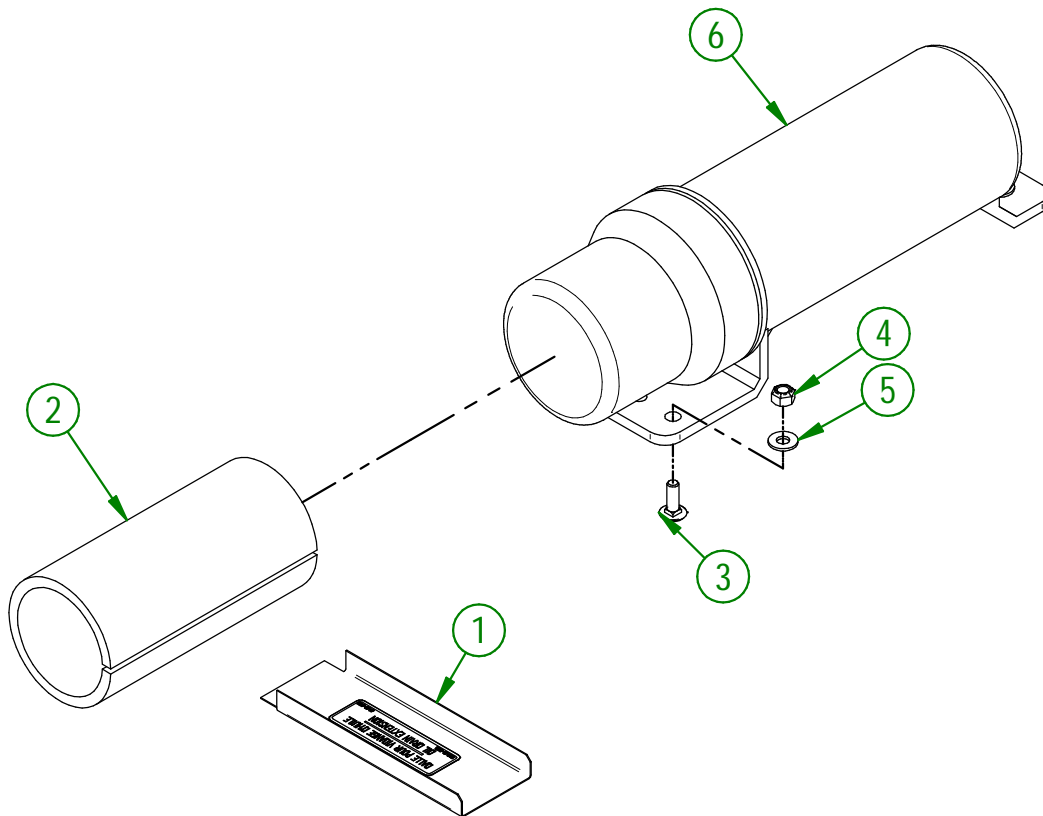
**AGRIMETAL**  
**ROTOR ASSEMBLY**

CREATION : 13/04/20  
REVISION : 23/02/26

ASSEMBLY : **75-55-0087**  
AUTHOR : F.HÉLIE

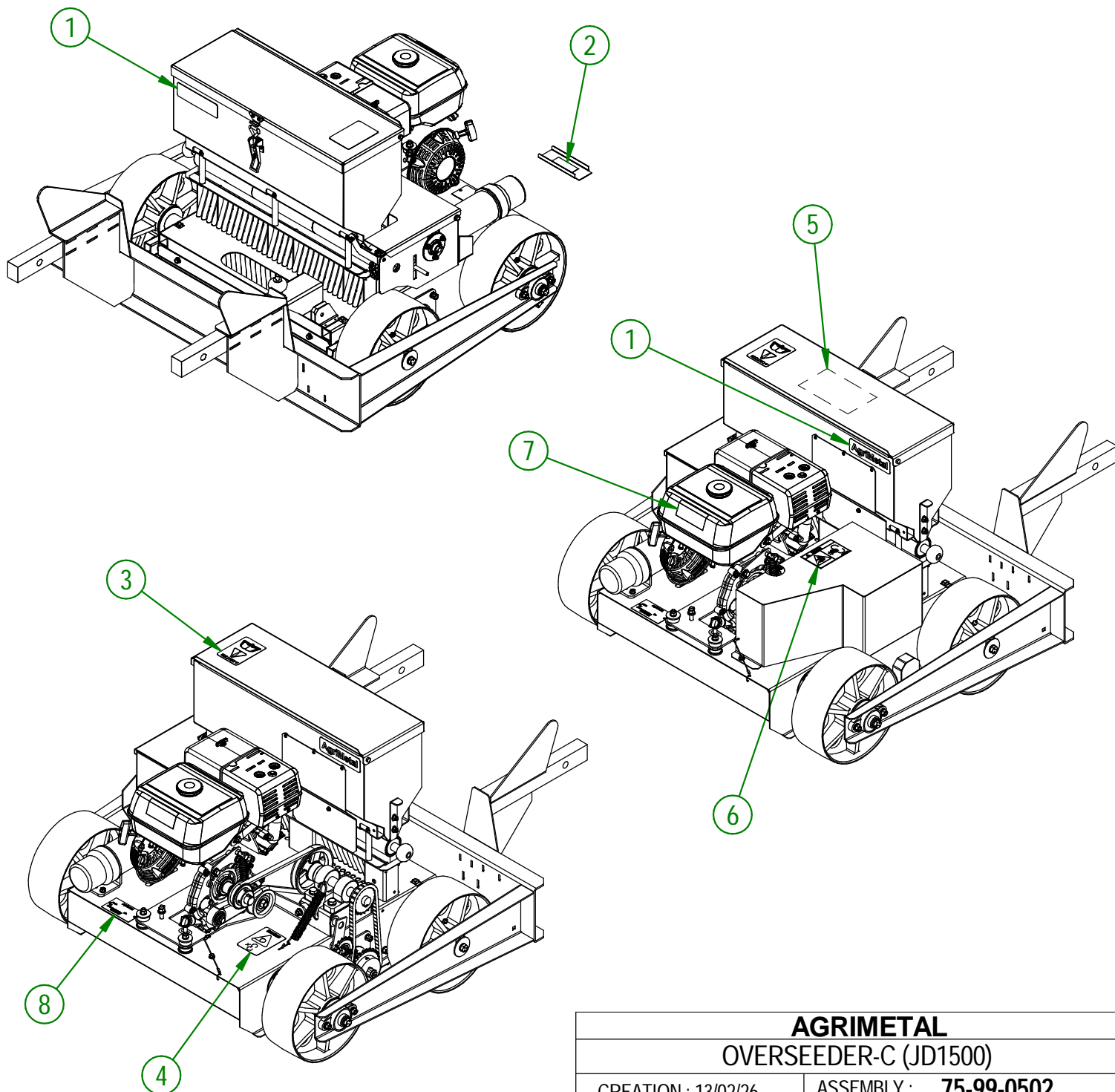
75-57-0178

#	PART #	Qty	TITLE
1	01-55-0030	1	DRAIN OIL SLAB "STICKER INCLUDED"
2	75-98-0520	1	OPÉR.MAN.OVERSEEDER (ENGLISH)
3	NC01-07-0003	3	CARR. BOLT GR5 ZINC 1/4-20 X 3/4"
4	NC01-96-0009	3	NYLON-INSERT LOCKNUT ZINC 1/4-20
5	NC02-25-0007	3	WASHER ZINC 0.281 = 9/32
6	NC13-30-0237	1	PLASTIC TUBE FOR OPERATOR'S MANUAL



<b>AGRIMETAL</b>	
OPERATOR'S MANUAL GROUP	
CREATION : 16/01/19	ASSEMBLY : <b>75-57-0178</b>
REVISION : 20/02/26	AUTHOR : F.HÉLIE

#	PART #	Qty	TITLE
1	NCI3-33-0002	2	STICKER AGRIMETAL
2	NCI3-33-0023	1	STICKER OIL DRAIN EXTENSION
3	NCI3-33-0183	1	STICKER CAUTION OPERATION MANUAL
4	NCI3-33-0189	1	STICKER DANGER (PERSON AND CHAIN DRIVE)
5	NCI3-33-0197	1	STICKER SEEDING RATE BY SPROCKETS
6	NCI3-33-0247	1	STICKER DANGER
7	NCI3-33-0252	1	STICKER (FIRE RISK)
8	NCI3-50-0086	1	SERIAL NUMBER PLATE



**AGRIMETAL**  
**OVERSEEDER-C (JD1500)**

CREATION : 13/02/26  
 REVISION : 20/02/26

ASSEMBLY : **75-99-0502**  
 AUTHOR : J. Houle